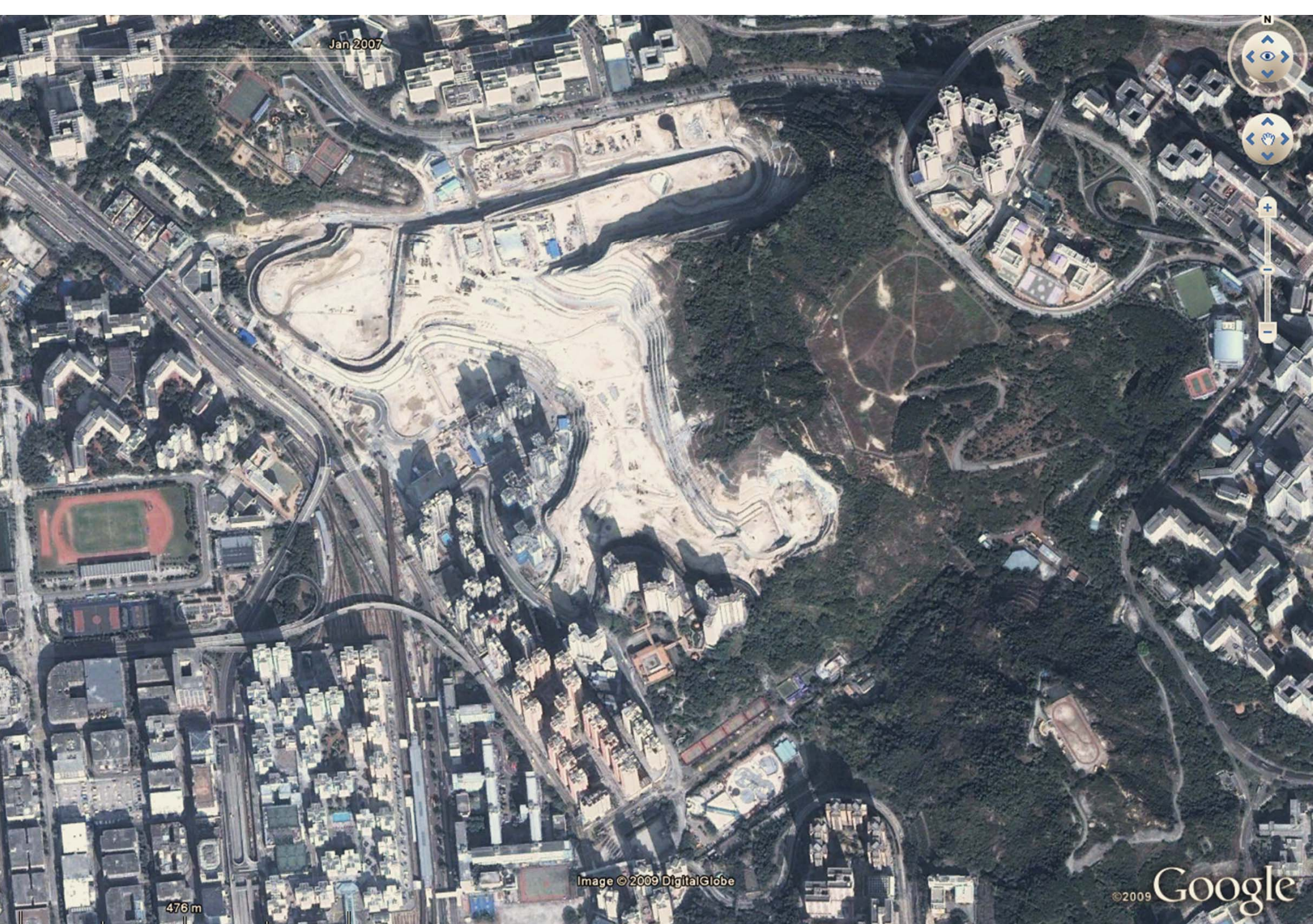


A brief introduction of the Choi Wan and
Anderson Road Site Formation
(mainly photo illustration)

Formation and Associated Infrastructure Works for Development at Choi Wan Road and Jordan Valley

About 9 million cu m of soil and rock will be excavated mainly using blasting techniques from the Jordan Valley for the formation of building platforms for future housing development. After blasting, the rock and soil will be sieved and crushed to the required grading, all material will be transported to the former Kai Tak Airport by means of a fully enclosed conveyor belt and placed in temporary stockpiles.

The processed and stockpiled material will be trucked to the end of the runway of the old Kai Tak Airport where a pair of temporary off loading ramps are to be erected for barging away of the processed soil and rock. Within the Jordan Valley site, retaining walls and box culverts will be constructed, storm water drains and sewers and water mains will be laid, public utility services will be installed, carriageway and footpaths will be constructed and landscaping works to the new slopes will be implemented. In addition, a pedestrian tunnel within the Jordan Valley site is to be formed by means of drill & blast.



Choi Wan area in 2007

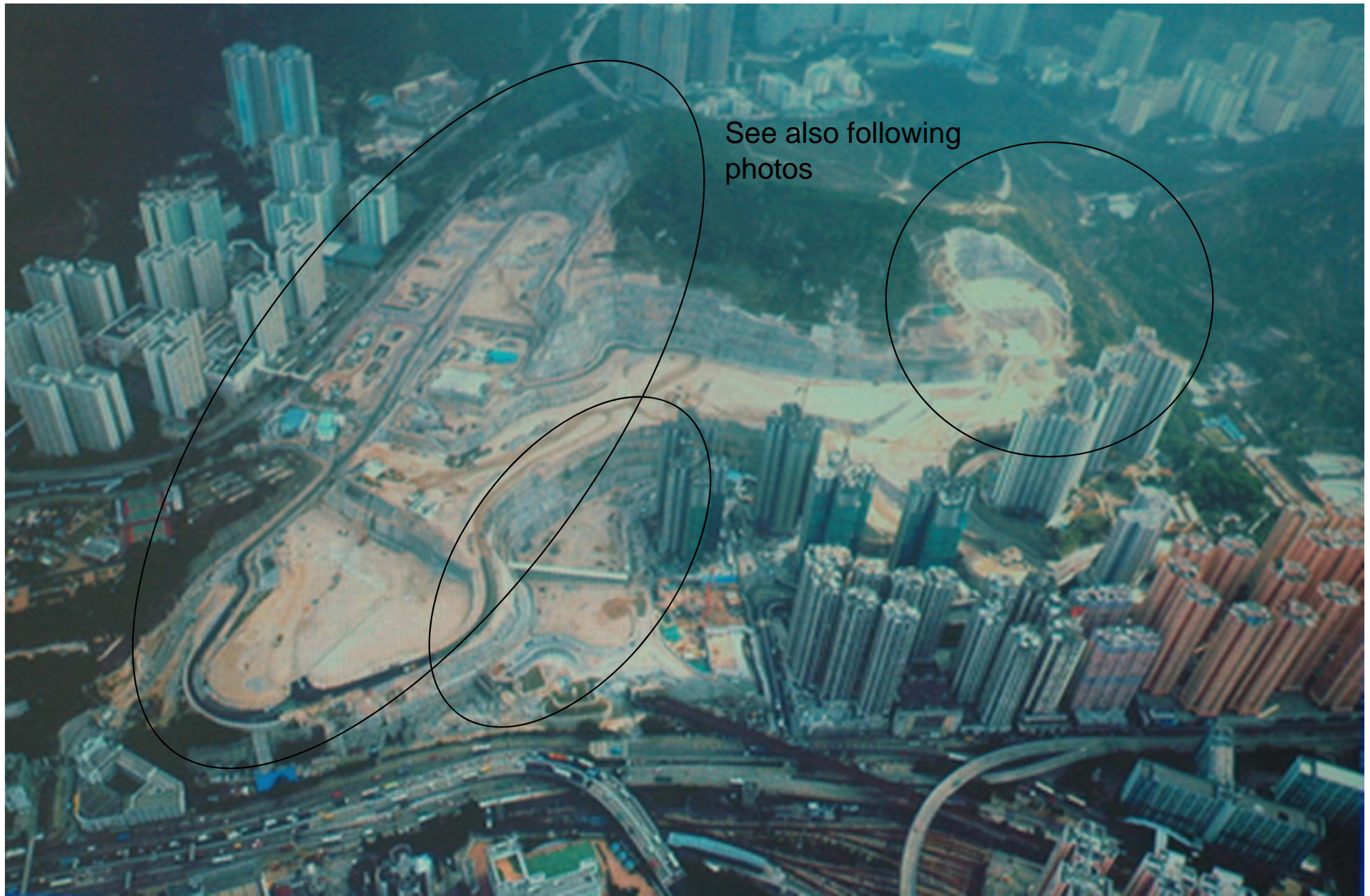
Jan 2009



Image © 2009 DigitalGlobe

Choi Wan area in 2008

Google



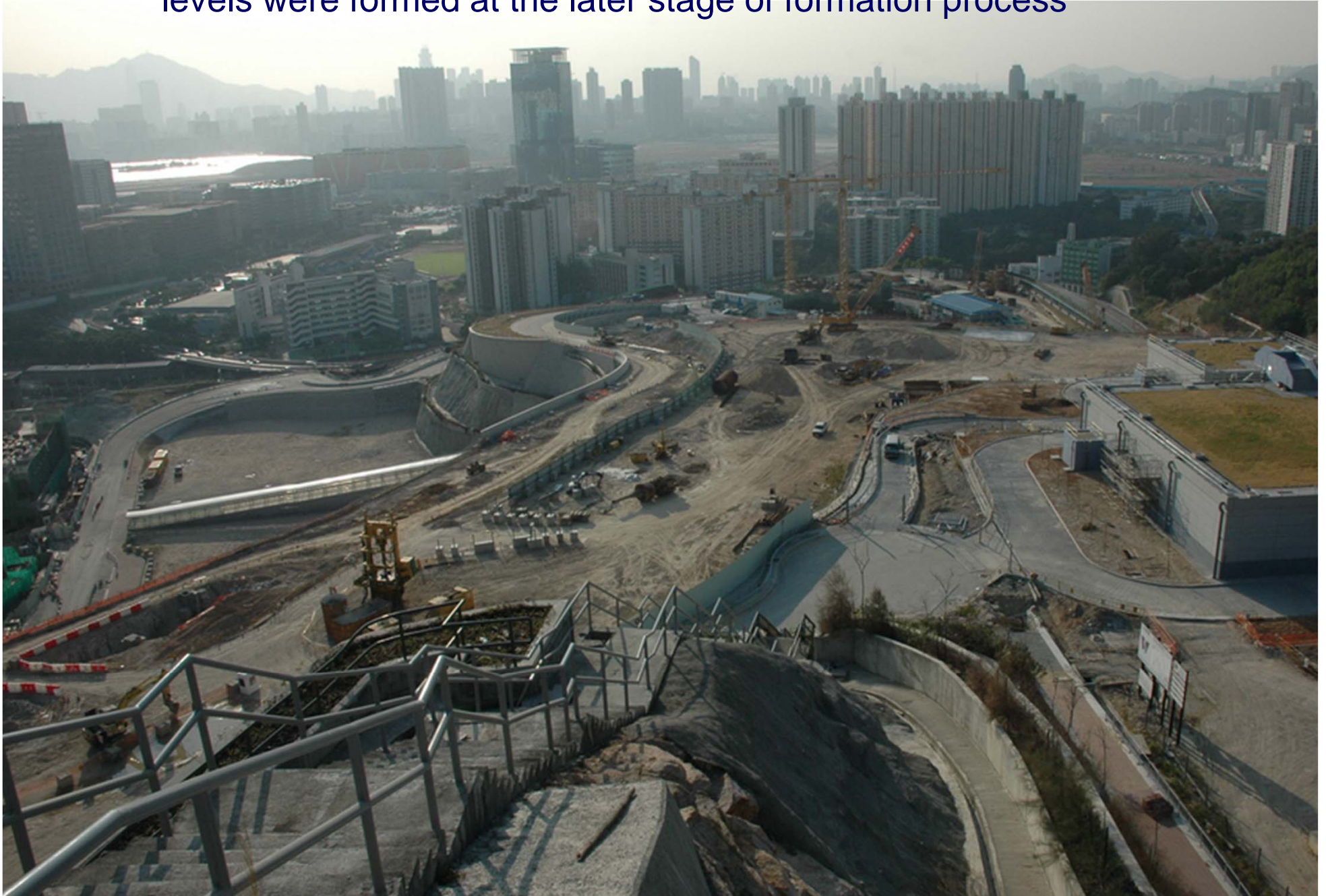
Forming of large piece of terraced land to accommodate new building developments (Choi Wan formation)





New land being formed along
New Clear Water Bay Road

Terraces (smaller strips of flatter land platform) at various levels were formed at the later stage of formation process







New land being formed
near Jordan Valley



Associated roadway by
constructing a link road
from Kwun Tong Road



Choi Wan area
as seen in 2009

The Anderson Road Site Formation is a Civil Engineering and Development Department (CEDD) project with a contract sum of about HK\$3.2 billion.

The project included the construction of site formation, roads, drains and upgrading of existing infrastructure to provide usable land of about 20 hectares for housing and associated government, institution or community uses at the site between existing Anderson Road Quarry and Sau Mau Ping Road in Kwun Tong District.



Anderson Road area
as seen in 2009



Anderson Road area in 2008 with
the quarry facility still under operation

The Anderson Road Site Formation (2010)

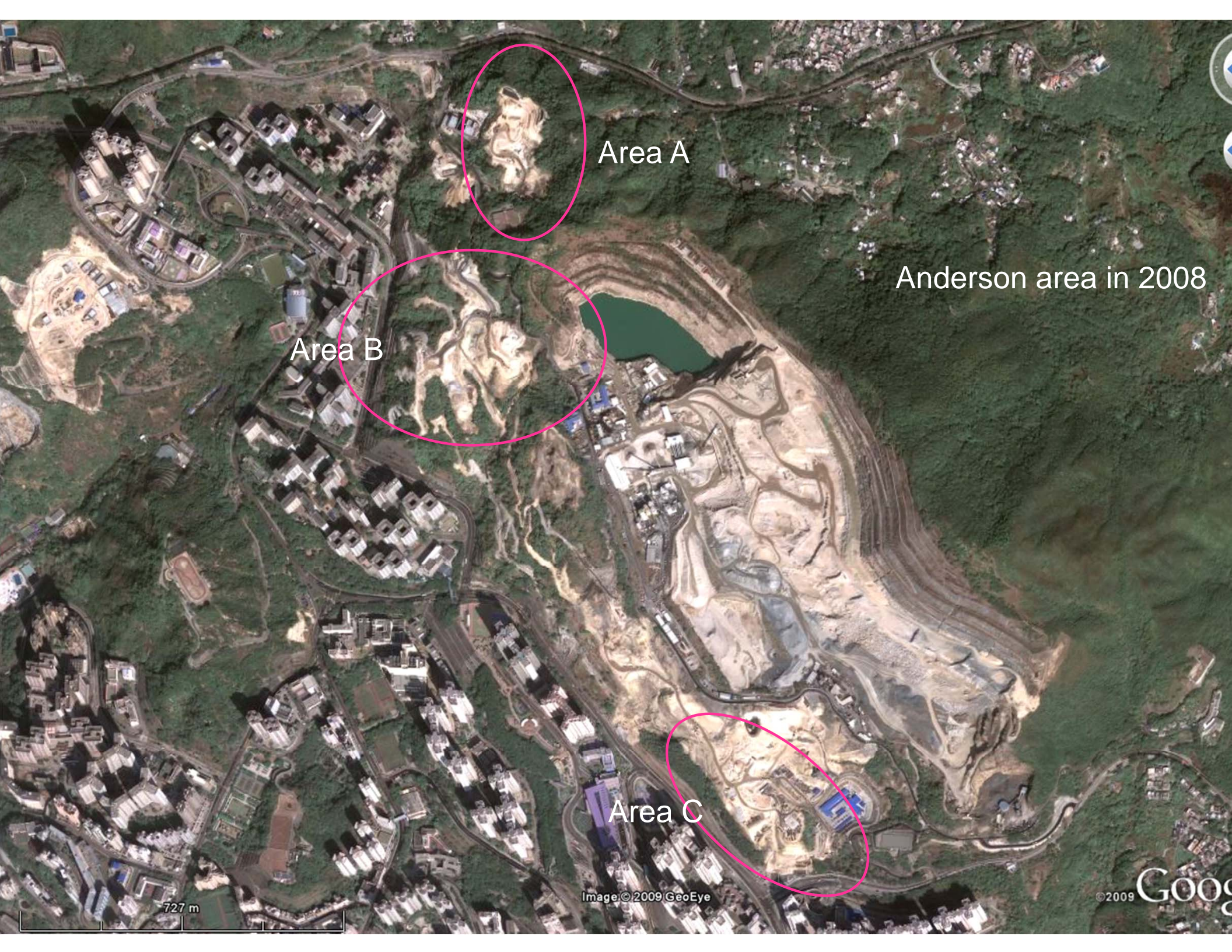


Anderson Road area as seen in 2012





Satellite image showing the Anderson Road area (mainly the quarry) in 2006



Area A

Anderson area in 2008

Area B

Area C

727 m

Image © 2009 GeoEye

© 2009 Google

Area A – at Junction of
Clear Water Bay Road
and Anderson Road

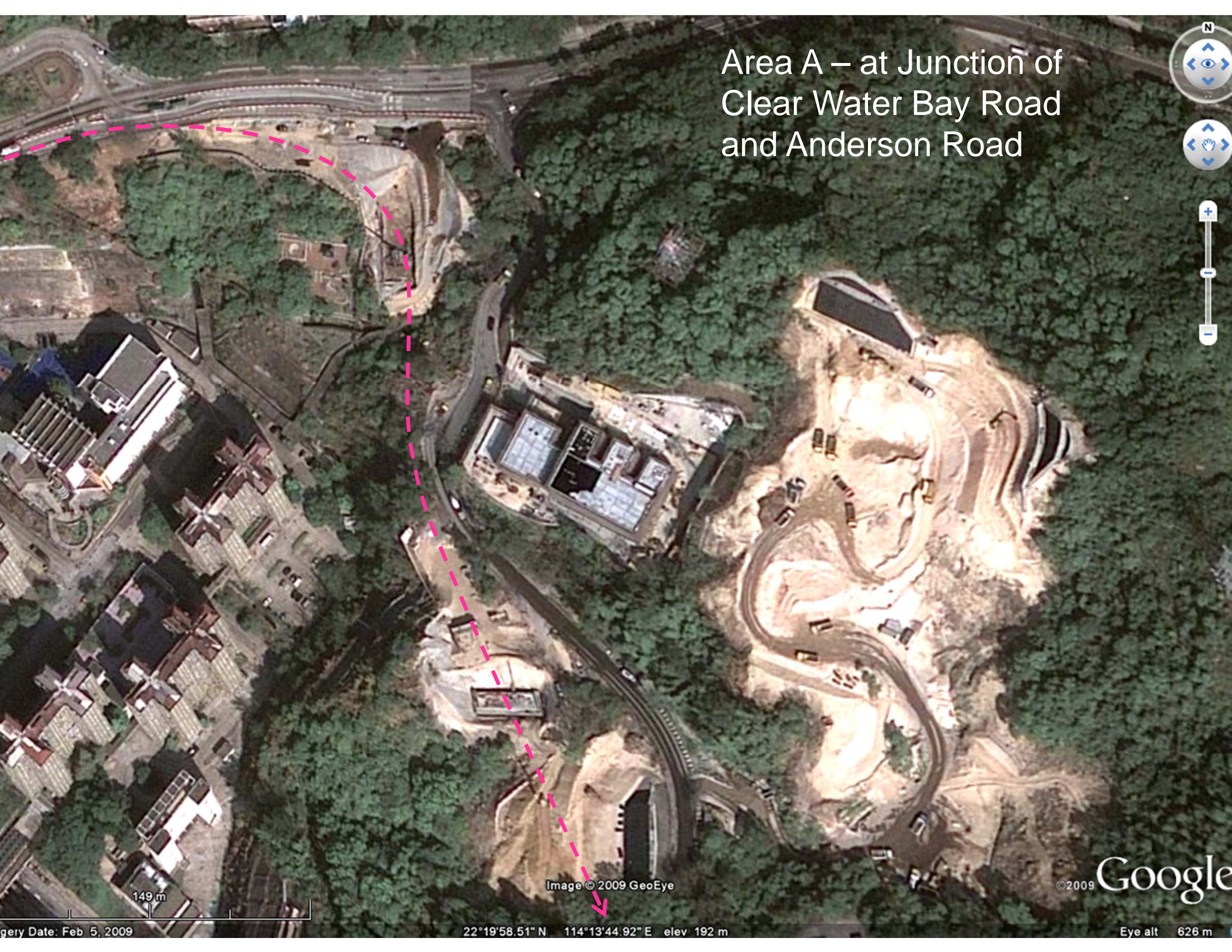


Image © 2009 GeoEye

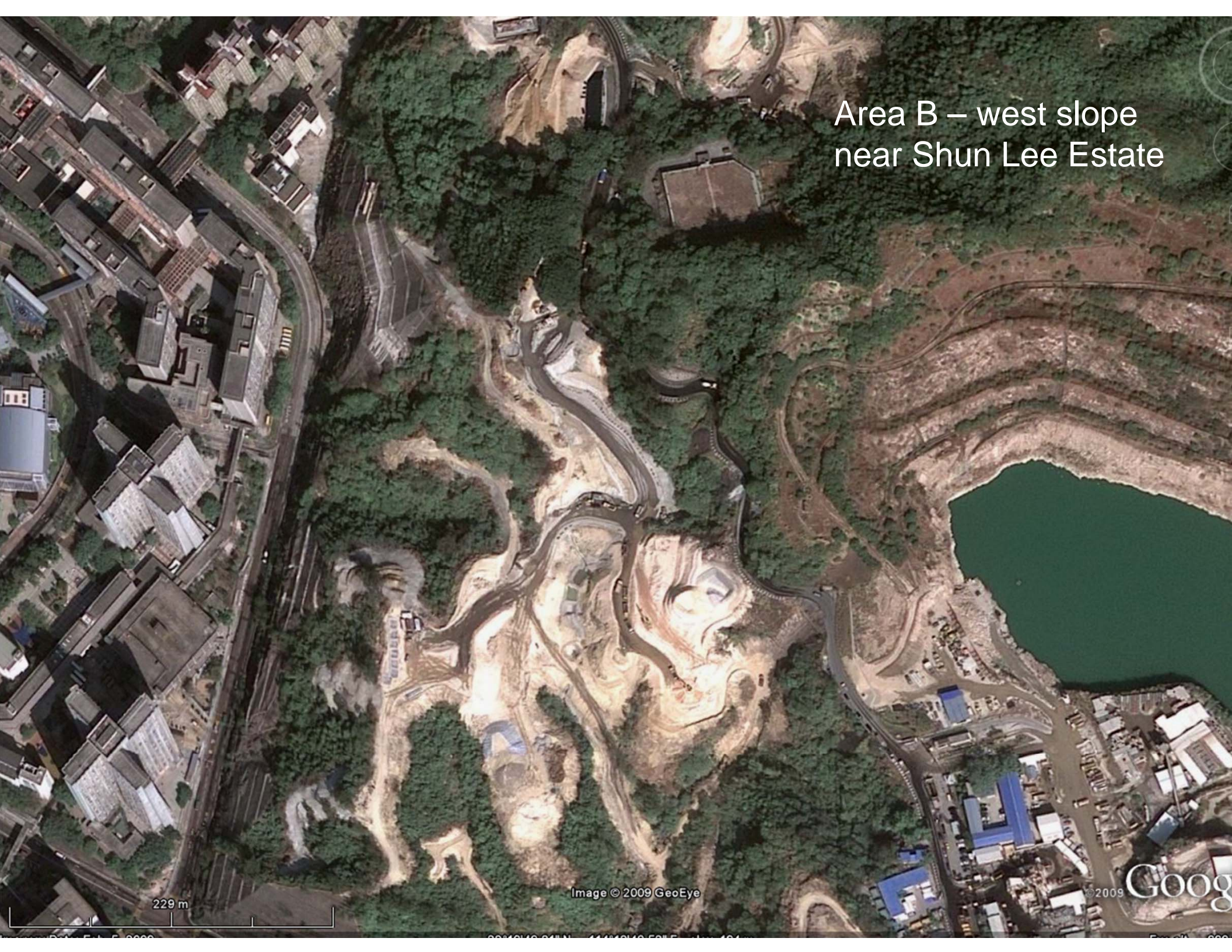
©2009 Google

Imagery Date: Feb 5, 2009

22°19'58.51" N 114°13'44.92" E elev 192 m

Eye alt 626 m

Area B – west slope
near Shun Lee Estate



229 m

Image © 2009 GeoEye

2009 Google

Area B – west slope
near Shun Lee Estate

Shun Lee Estate

175 m

Image © 2009 GeoEye

© 2009 Google



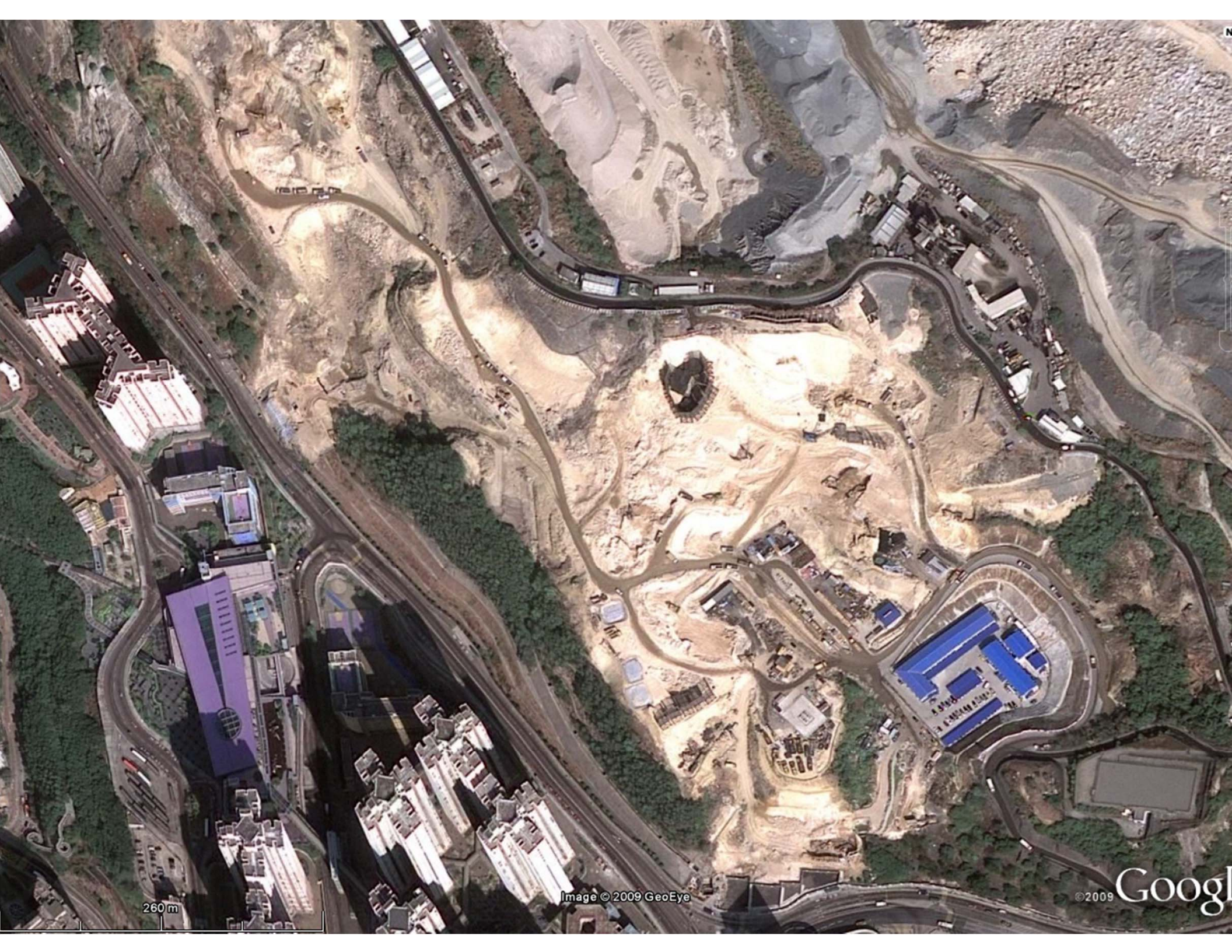
Area C – north slope near
Sau Mau Ping Estate



423 m

Image © 2009 GeoEye

© 2009 Google



260 m

Image © 2009 GeoEye

© 2009 Google

The actual view on site



The actual view on site





The same location as seen in
mid 2011 and mid 2012







The actual view on site



The actual view on site
from Sau Mau Ping Estate





Start constructing the public estate once after the preliminary completion of the lower part of the site formation .





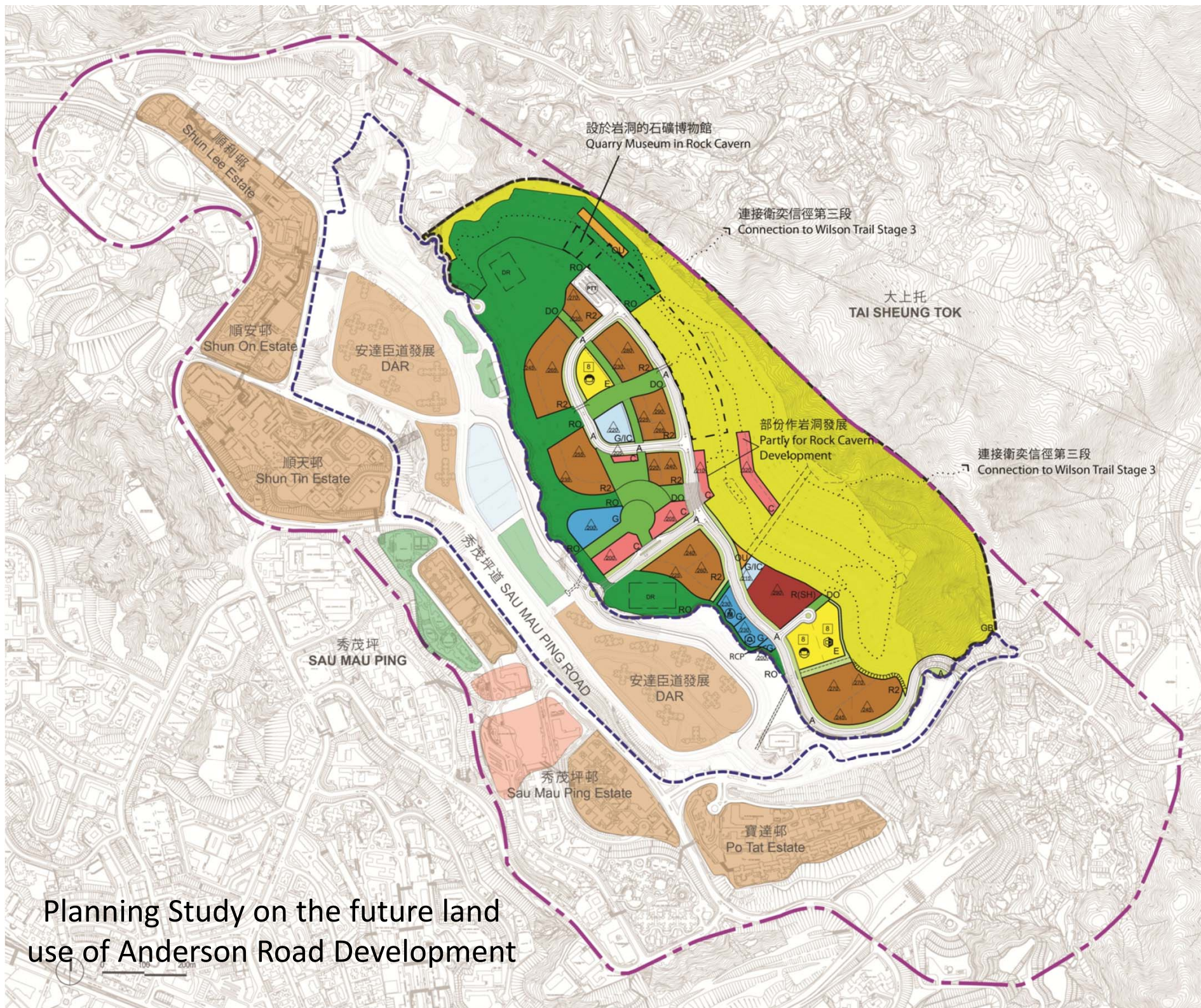
The lower formation platform being levelled ready for the construction of the public housing estates (2012)



Commencement of the construction of the public housing estates (2013)



The first phase of Public Buildings close to completion in 2015



Planning Study on the future land use of Anderson Road Development

Master Planning of Anderson Road Development



圖例 LEGEND	
1	石礦公園 (岩壁部份) Quarry Park (on the Rock Face)
2	露天劇場 Amphitheatre
3	休憩湖 Amenity Lake
4	活動康樂空間 (例如：滑板公園) Active Recreational Space (e.g. Skate Park)
5	遠足徑 Hiking Trail
6	攀石中心 Rock Climbing Centre
7	石礦博物館廣場及散步長廊 Quarry Museum Plaza and Promenade
8	門廊雕塑/石礦公園入口 (公共交通) Gateway Sculpture / Quarry Park Entrance (Public Transport)
9	石礦公園信息中心 Quarry Park Information Centre
10	單車徑 Cycling Track
11	綠化走廊 Green Promenade
12	廣場 Plaza
13	設有岩洞商業設施的觀景台 Viewing Deck with Commercial Facilities in Rock Caverns
14	觀景台 Lookout
15	綠化幹道 Green Spines
16	綠化行人走廊 Green Pedestrian Corridor
17	園景平台 Landscaped Deck
18	康樂場地 Recreation Grounds
19	垂直運輸系統 Vertical Transport System
20	露天茶座 Outdoor Cafe
21	公共交通總站 Public Transport Terminus
22	主題式種植 Thematic Planting
23	山峰觀景台 Summit Lookout
24	大草地 Grand Lawn
25	兒童遊樂場 Children's Play Area
26	觀景平台 Viewing Platform
27	研究地點 Study Site