

Land reformation and environmental upgrading in the World Expo in Shanghai (Part 2)

(Upgrading the city quality of Shanghai)

Presentation for HKIE Seminar
Environmental, CAD & AMC
25 March 2017

Preserving some historic buildings to substantiate Expo Events/Activities



Old workshops and office buildings belonged to the previous shipyard are preserved and converted as new Expo facilities





The building after conservation



Some other buildings
used as workshop or
minor offices for the
previous shipyard
also being preserved.





A warehouse on the bank of Huangpu River converted into a club house. These images show the same building before and after the conversion

The building under conversion





Some of the facilities being preserved for later use during the Expo



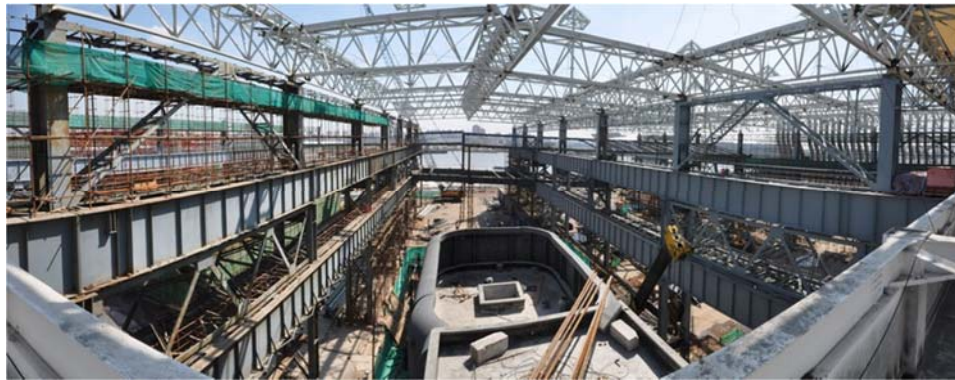
The same structures as seen in 2017

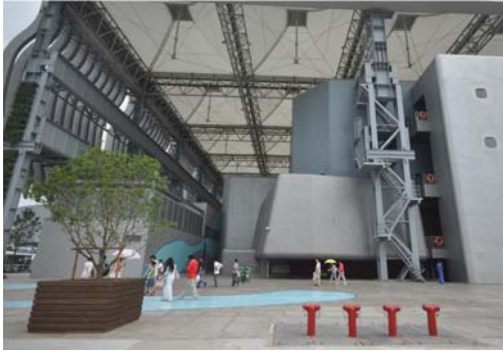


Some of the facilities being preserved for later use during the Expo



This assembly workshop after conversion became the Ship Museum

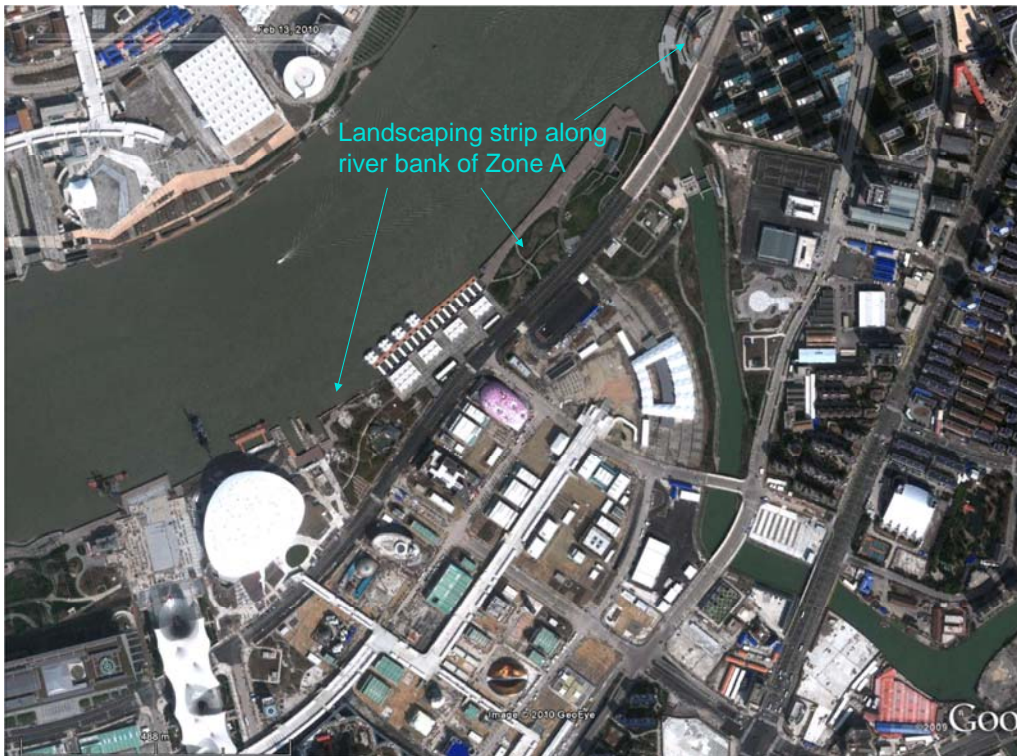


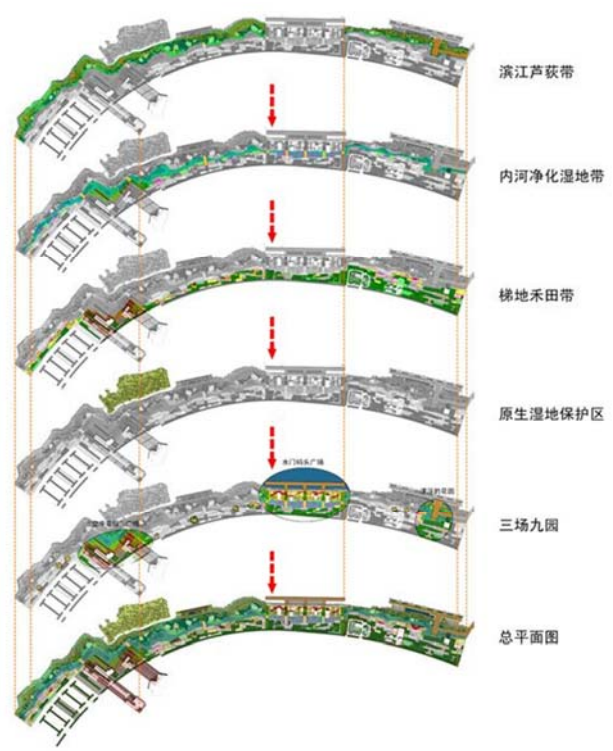


One of the preserved buildings from the previous shipyard (refer to the following slide)



Greening and Landscaping provisions for the Expo venues





Green master plan for the Rear Bund (後灘) development



Previous united pavilion for African countries



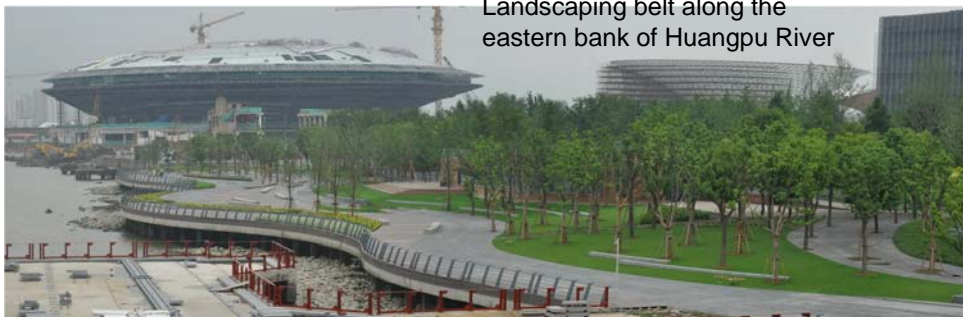


Green belt along the bank of Huangpu River

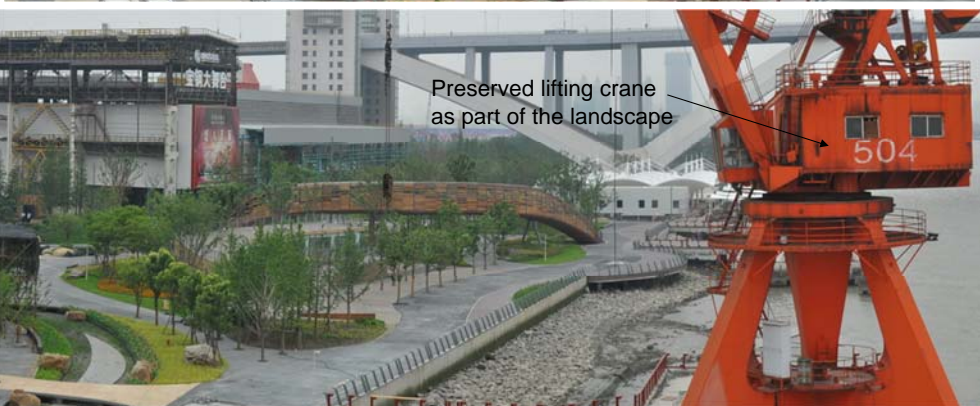




A pedestrian promenade and green belt along the Huangpu River basically formed before the opening of the Expo



Landscaping belt along the eastern bank of Huangpu River



Preserved lifting crane as part of the landscape



Landscaping and green zones inside Expo venue (Pudong strip)

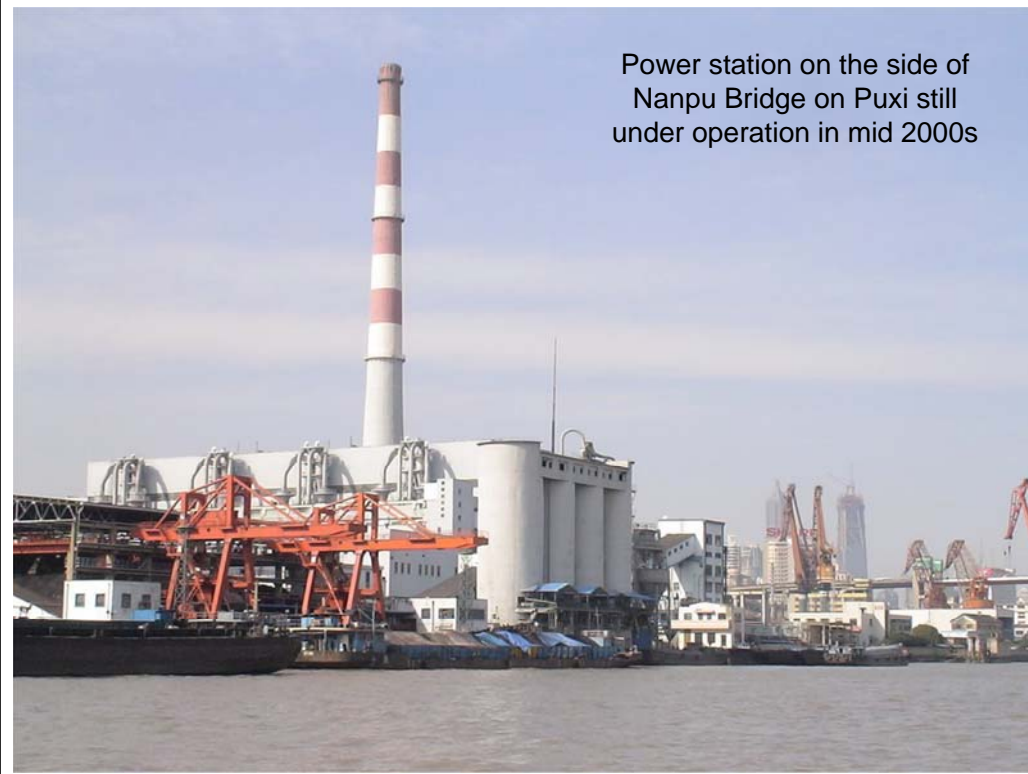


Chinese/Japanese mixed garden as part of the landscape in the Expo venue (Zone 1)



The Chinese/Japanese garden located opposite to the Japan Pavilion

Some representing cases showing the
Preservation and Conversion process



Power station
preserved and
converted into the
Pavilion for the Future



Solar panel on the roof terrace
of the previous power station



Solar reflective panels



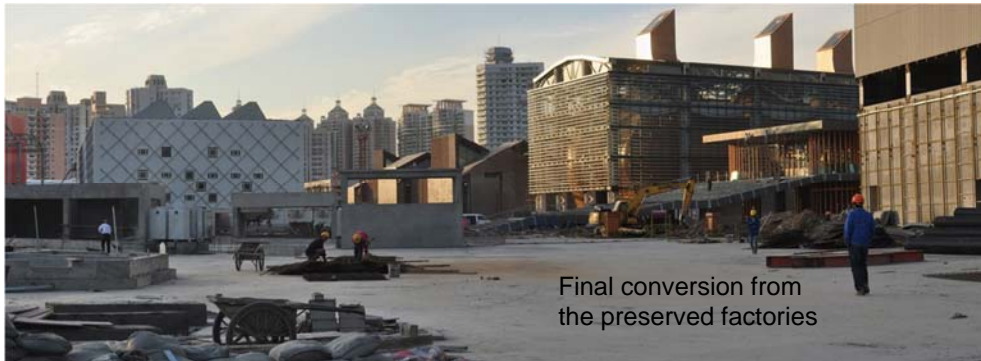
Decommissioning the power station



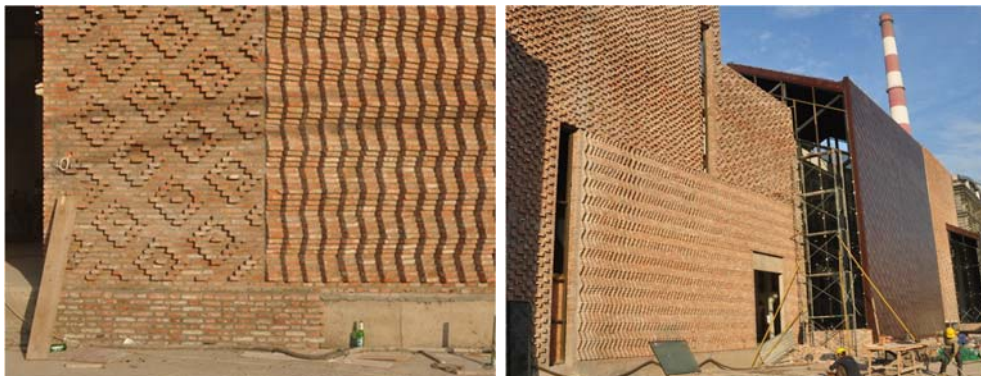
Pavilion of the Future opened in the Expo

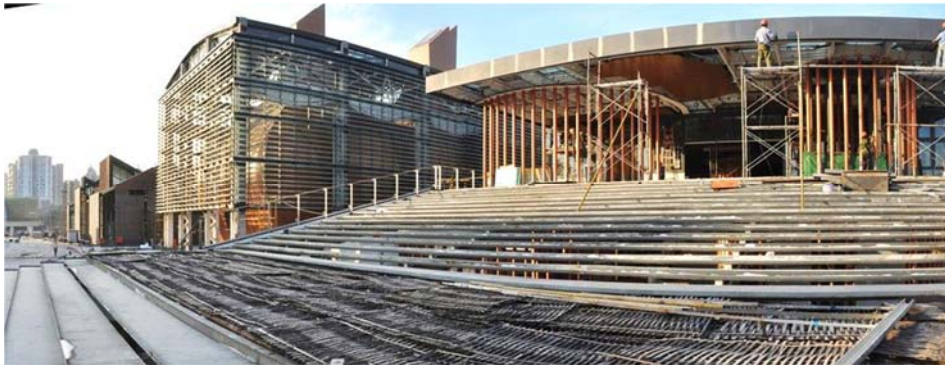


Old factories being preserved and converted into other themed centers.
(factories constructed in 1930's using precast method)

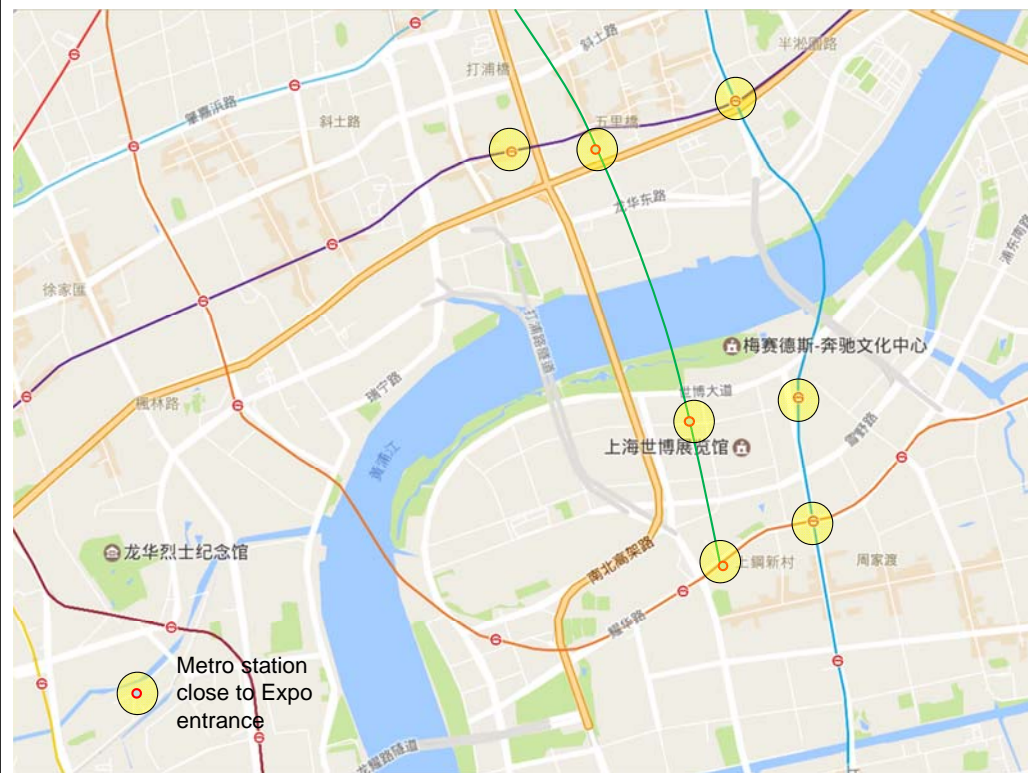


Final conversion from the preserved factories





Public spaces, accessibility and Neighbourhood



The Expo Axis (世博轴) as the official main entrance and central corridor to 2010 Expo



The official entrance from Expo Axis at Pudong

One of the official entrance at Puxi



Ferry pier linking between the Puxi and Pudong Expo venues



There are 4 visitor ferry piers
2 on each side of the venue
taking visitors from the city
area to the Expo



Spacious public areas to demonstrate the good practice of quality urban living



Public space and landscape provision for public gathering and periodic performances



Views of some public plaza on Puxi venues



Views of some public plaza on Puxi venues
(area around the previous dock bay)



Elevated walkway linking all major zones inside the Expo venue

The Expo Axis

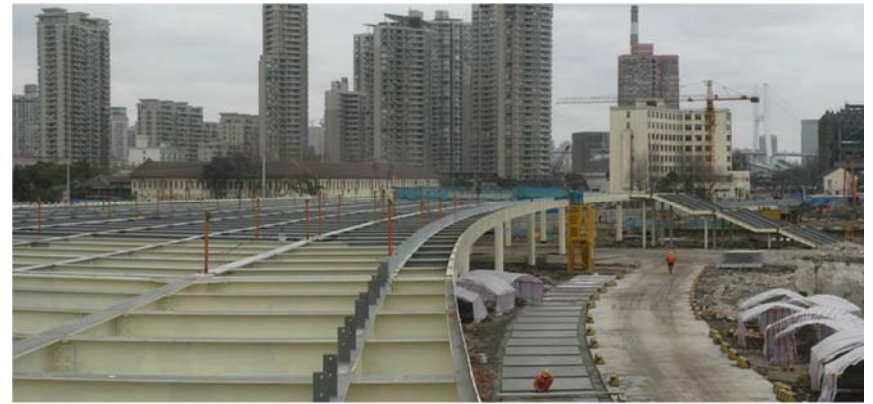


Elevated walkway linking all major zones inside the Expo venue





Fabricating the elevated pedestrian walkway



Elevated footbridges are erected as walkway for visitors on both side of the Expo Venues





The venue vicinity on Puxi at its final touching-up stage
(For final roadway and other visitor/pedestrian facilities)





The Sun Valley and the canopy corridor along the Expo Axis as one of the energy-saving icons



The sun valley and the canopy as rain water collectors



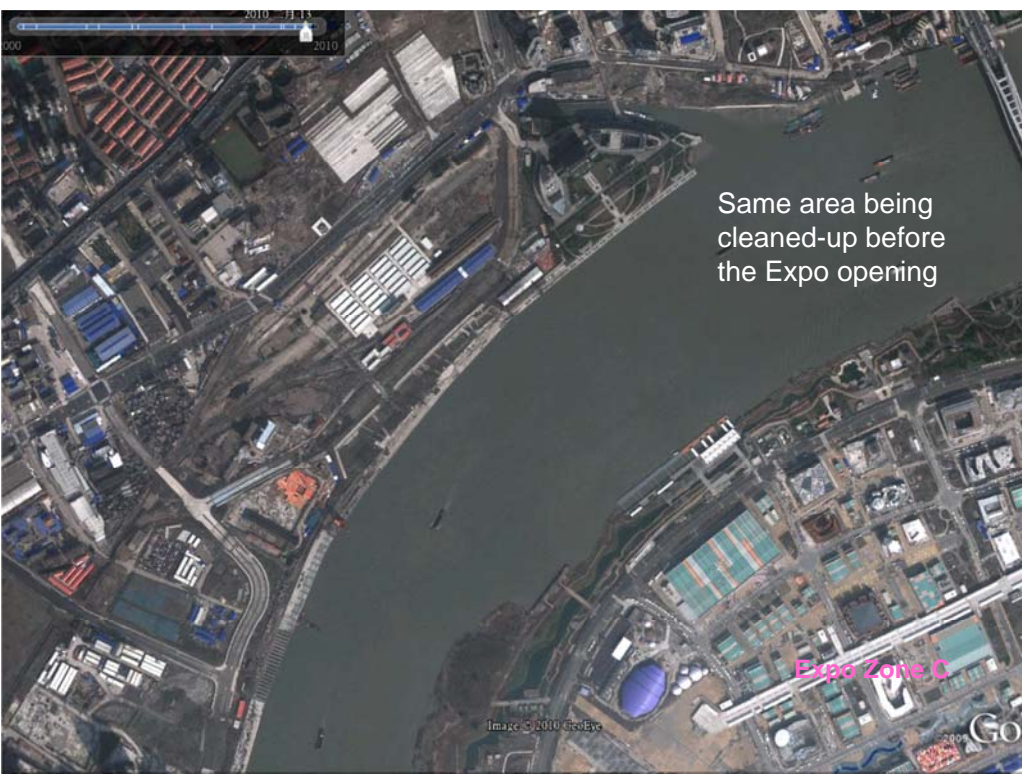


Maintenance concern for the canopies



Upgrading the sub-urban area
nearby the Expo venue

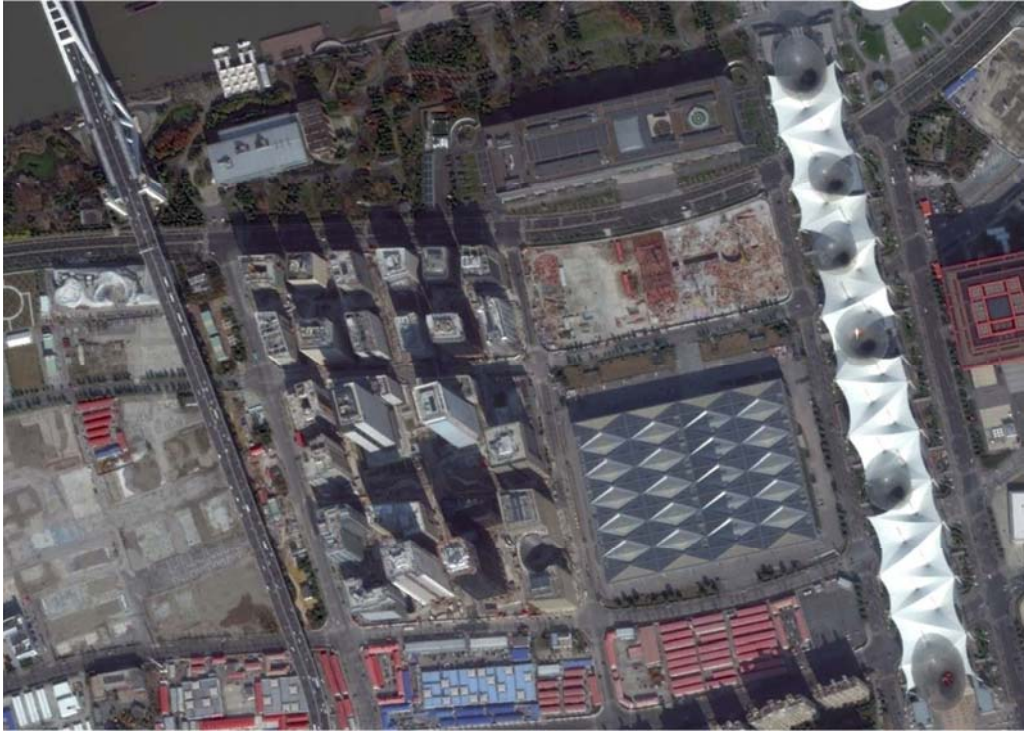
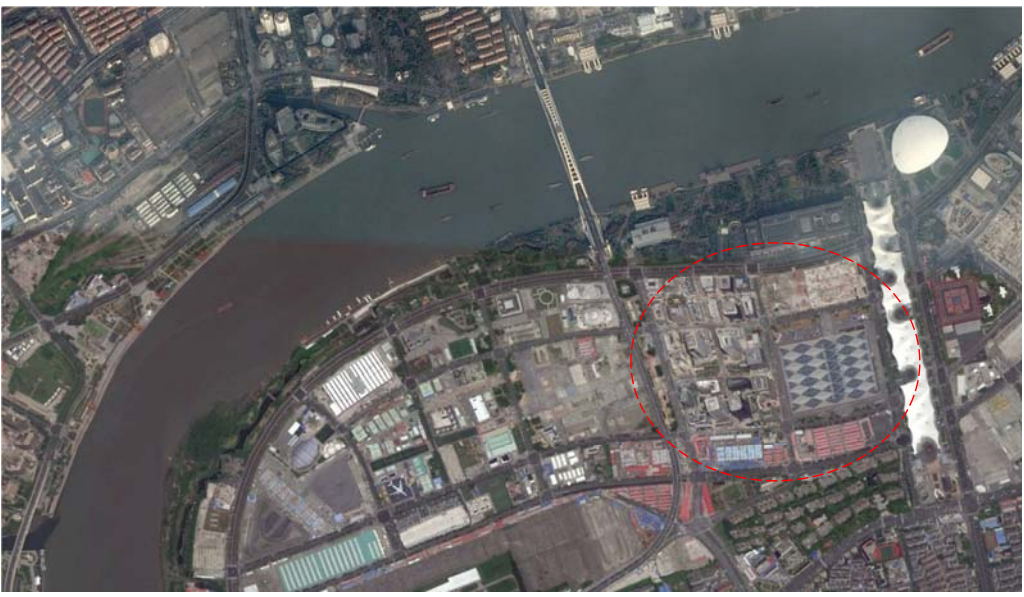


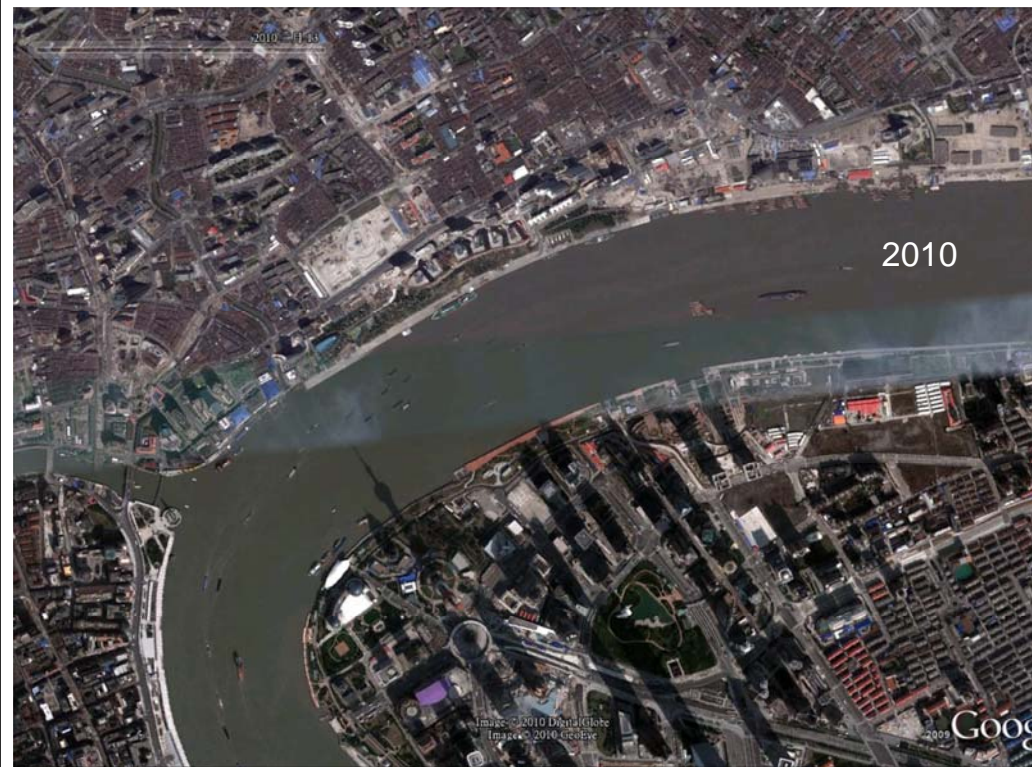


Same area being cleaned-up before the Expo opening

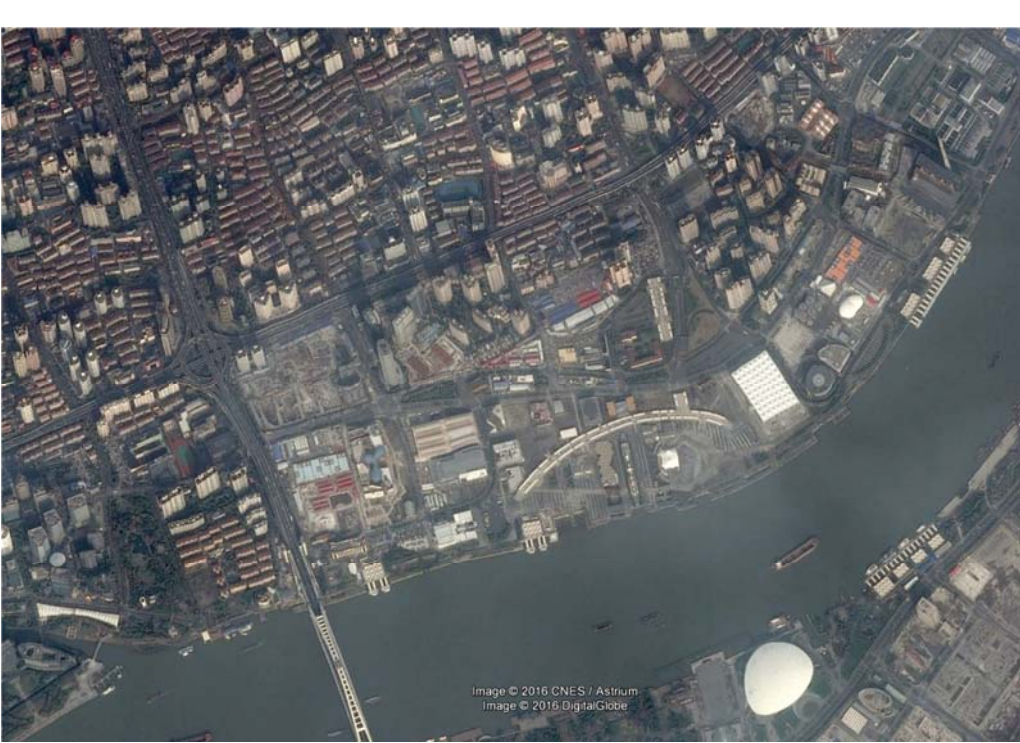


Same area with the pavilion removed for redevelopment





Recent development in Puxi near the Lupu Bridge





View of the same area from Lupu Bridge in 2002



View of the same area from Lupu Bridge in 2005



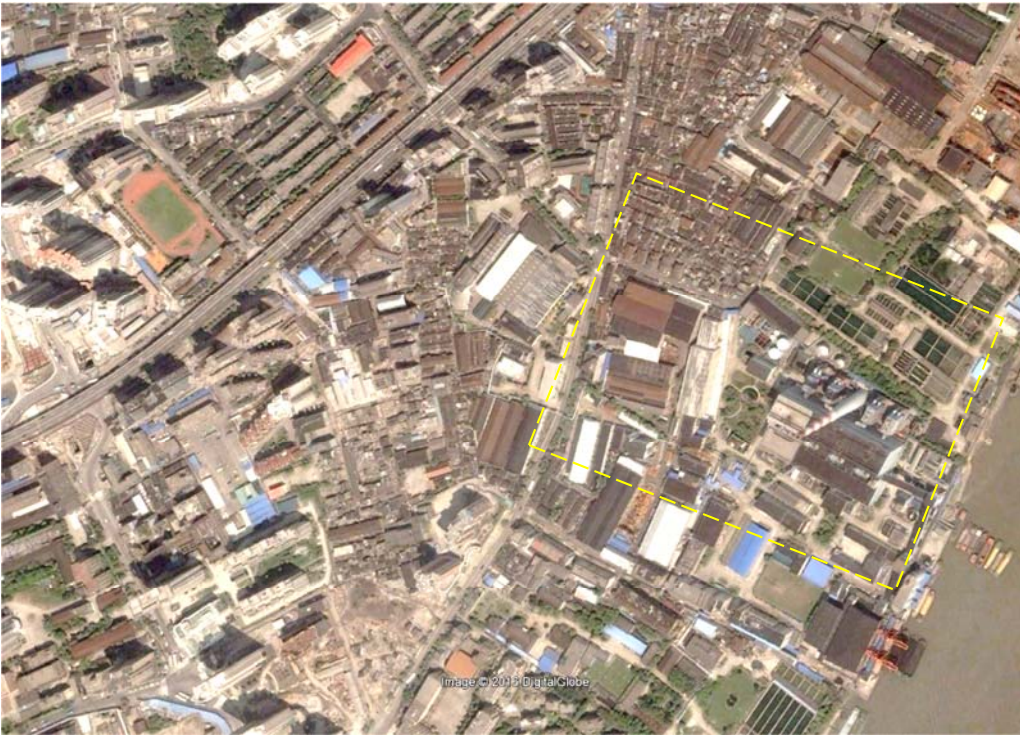
View of the same area from Lupu Bridge in 2016



View of the same area along the river bank from Lupu Bridge in 2016



Recent development in Puxi near the Nanpu Bridge
(previous Expo Zone E)
(企業館, 城市文明館, 城市最佳實踐區)



Layout of land as in 2008



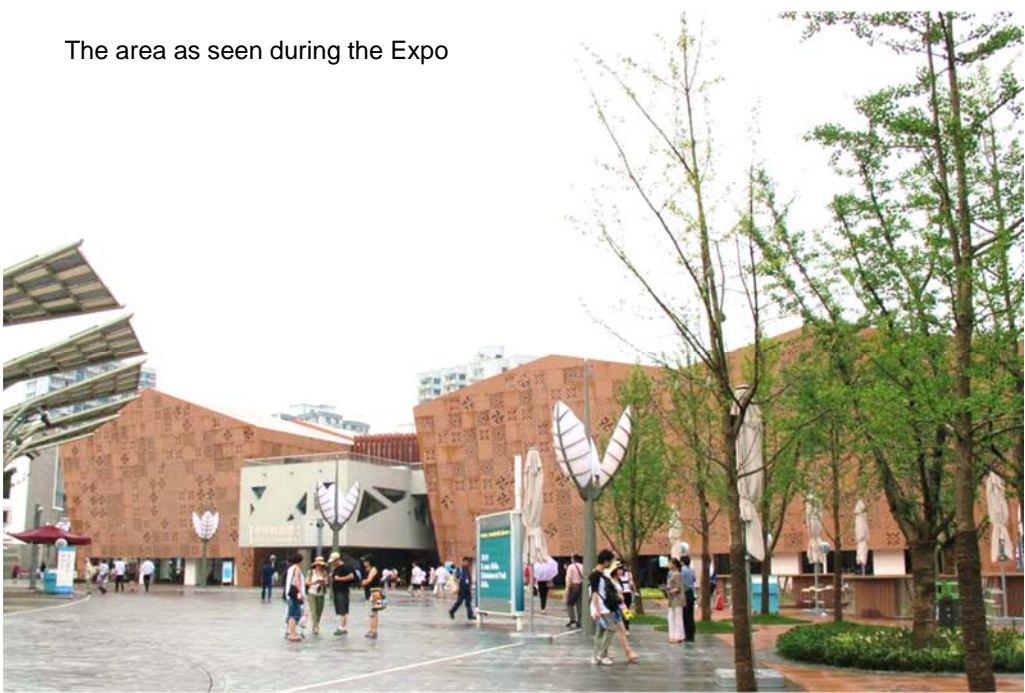
Layout of land as in 2012



Layout of land as in 2015



The area as seen during the Expo



The area as seen during the Expo



The area as seen during the Expo



The area as seen during the Expo





Setting up of a green wall



The area using as a public leisure and recreation zone as seen in 2016



The area as seen in 2016





Building complex demonstrating environment friendly sustainable design. It is now using as an office by a design company (as seen in 2016)



Recent development in Pudong near the Lupo Bridge





Major clients in property development in previous Expo Venue:

- 中國電網 State Grid Corporation of China
- 中國華電集團
- 寶鋼 Bao Steel
- 中信泰富
- 中國華能
- 招商局上海中心
- 中国黄金大厦
- 世博发展集团大厦





Old things often being erased
to give way for the new.
Whether it is doing something
destructive depends on the
quality and wisdom of planning







New green areas being formed after removal of some dilapidated old buildings
(area circled in previous slide)



The entire city is undergoing a large-scale renovation process to meet the opening of the Expo event



Upgrading of the Suzhou River



Suzhou River before and after the upgrading



Upgrading of buildings with high heritage value



General upgrading of the old buildings



Old buildings with strong colonial taste being converted into deluxe club house



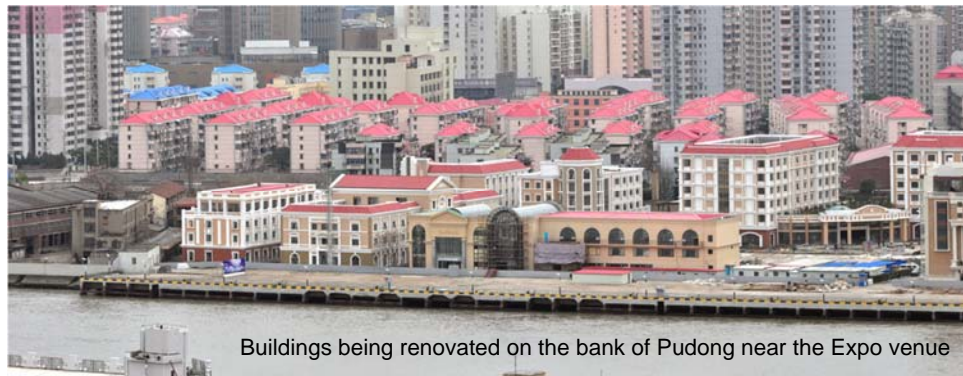
The final outcomes



Existing buildings along the perimeter of the Expo venue are renovated before the opening of the event



Buildings being renovated along the perimeter of the Expo venue on the Puxi side



Buildings being renovated on the bank of Pudong near the Expo venue

According to the investigator of this Shanghai studies series, Shanghai by hosting the World Expo 2010, has enhanced and transformed herself into a world-class international city with her unique heritage values and other urban qualities. Do not expect or blaming too much. After all, Shanghai as well as the entire China, is only rising up again from ruins after a lagging behind of more than a century's time. However, Shanghai has developed her own ways and yielded significant result.