

An introduction about the studies of Raymond Wong in China since 1995

Part 1

(Infrastructuer development related)

June 2017

Major China cities where Raymond Wong focused onto his studies:

- | | |
|-------------|-------------|
| - Guangzhou | - Shanghai |
| - Beijing | - Chongqing |
| - Shenzhen | - Tianjin |
| - Wuhan | - Quiyang |
| - Xian | - Chengdu |
| - Macao | - Taipei |

Raymond Wong started his what-so-called China Cities Studies dating back to end of 1990s. There are 2 main things that attract his eye-balls by that time. First is the historic buildings/architecture in China cities, in particular Guangzhou and Shanghai by that time. The second thing is the infrastructure development with focus in highway and railway projects.

So, this is the beginning of Raymond's story in China studies. And of course, very soon his studies are getting much broad-based, covering almost every other significance social issues about the cities under his studies.

Objective of studies:

- Understand the basic background of the cities under study, including their urban layout/planning pattern, social characteristic, general economic condition and status of development etc.
- Explore/identify major development/construction projects during the period of study and having follow up.
- Try to conduct more detail study of representing projects and obtain information as reference and to share such findings.
- Co-relate the findings to the overall development of China
- Develop networks to enrich further studies and developments.

Areas/topics of studies:

- Overall building, construction and engineering related topics
- Overall infrastructure and transportation projects
- Town planning and urban/new town development topics
- Special projects (World Expo, new financial districts, central business districts, industrial zones, urban upgrading/regeneration etc.)
- Architecture related topics (modern and historic)
- Environment and sustainability related projects
- Heritage preservation projects
- Other special theme studies, e.g. large-size commercial development/shopping mall, industrial revolution 4.0
- Other humanity related studies (社會人文相關議題)

Examples of representing building projects

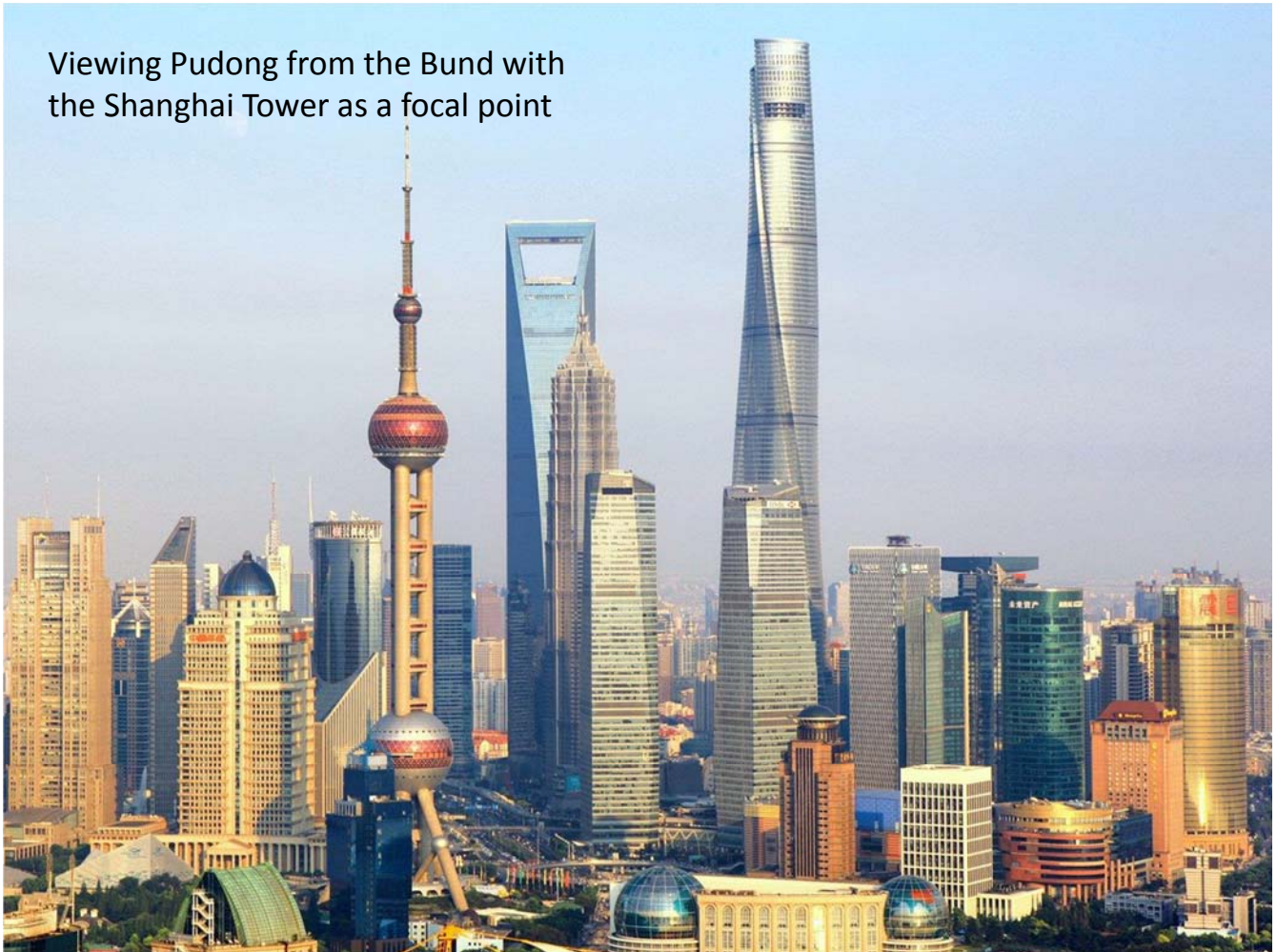


Shanghai Tower under construction in 2013





Viewing Pudong from the Bund with the Shanghai Tower as a focal point





A civil centre in Chongqing





Guangzhou Opera

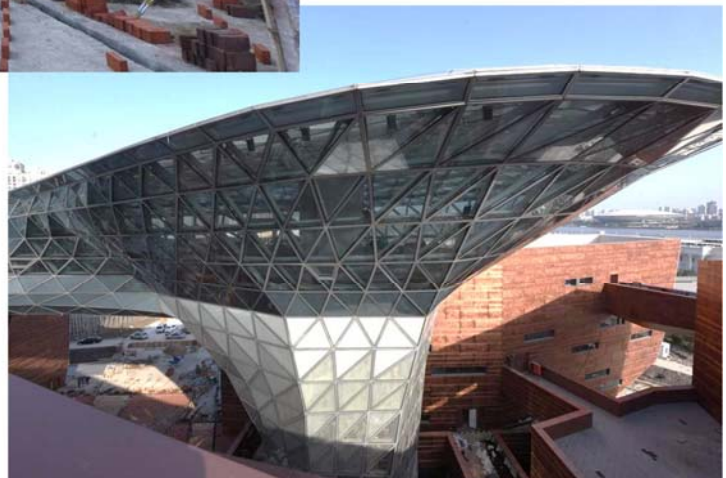
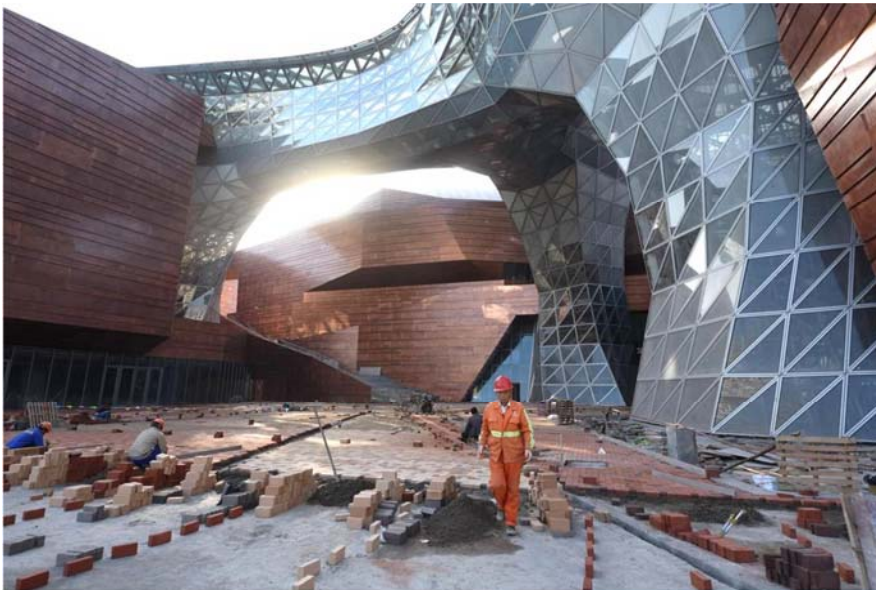


Guangdong Museum





A modern art centre in Shanghai







Examples for construction and
engineering related topics



Typical site formation works in China cities (Quiyang)



The work condition in Chongqing



The work condition in Chongqing





The work condition in Chongqing





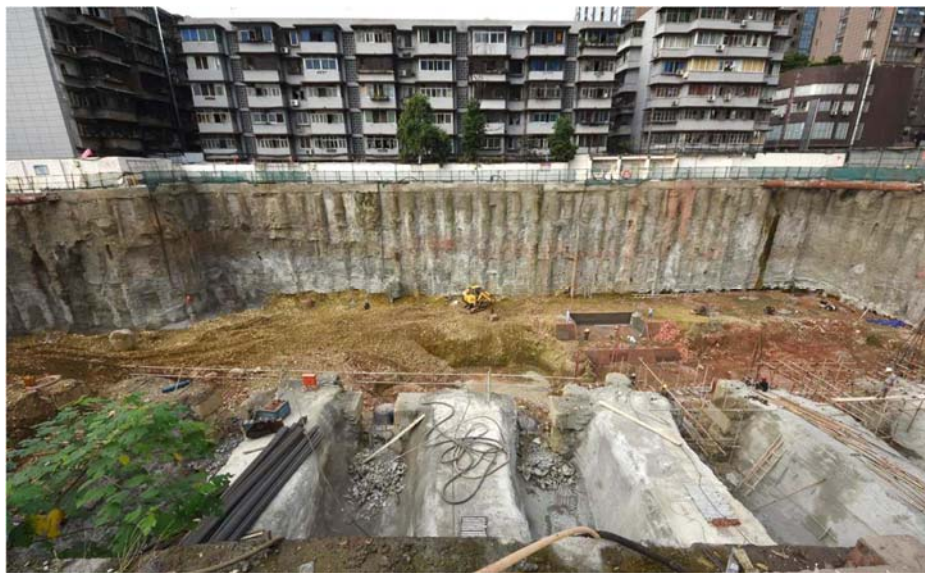
The work condition in Chongqing





A case in Chengdu





Guangzhou Taikoo Hui,
March 2008







Examples for infrastructure and
transportation projects



Shanghai highway network, a balance between development and environment



Nanpu Bridge and the approach bridge, Shanghai





Transportation knot at Xuhui
(above) and interchange of the
North-South/In'on expressway

(南北-延安高架道路)

39



The Lupo Bridge and its
approach roadway

40



Construction of an arch bridge using steel truss system in Chongqing



Construction of a cable-stay bridge in Chongqing



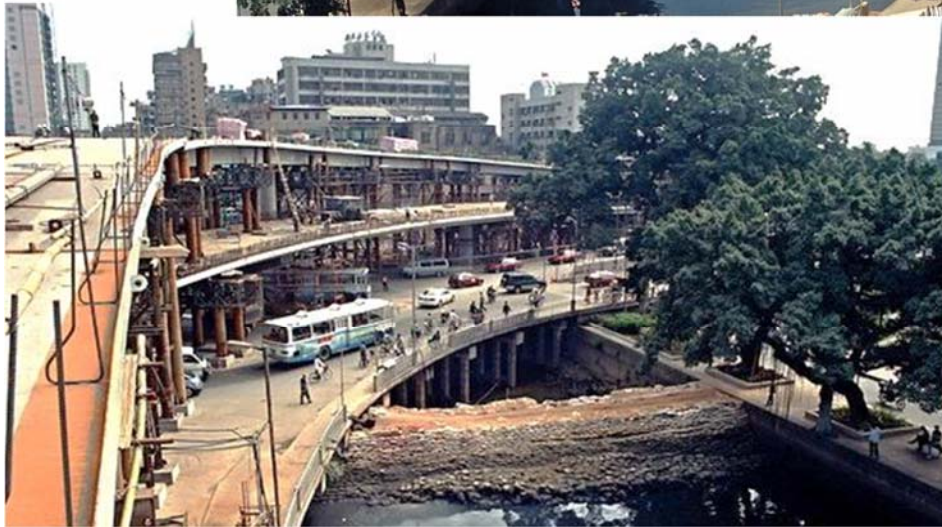
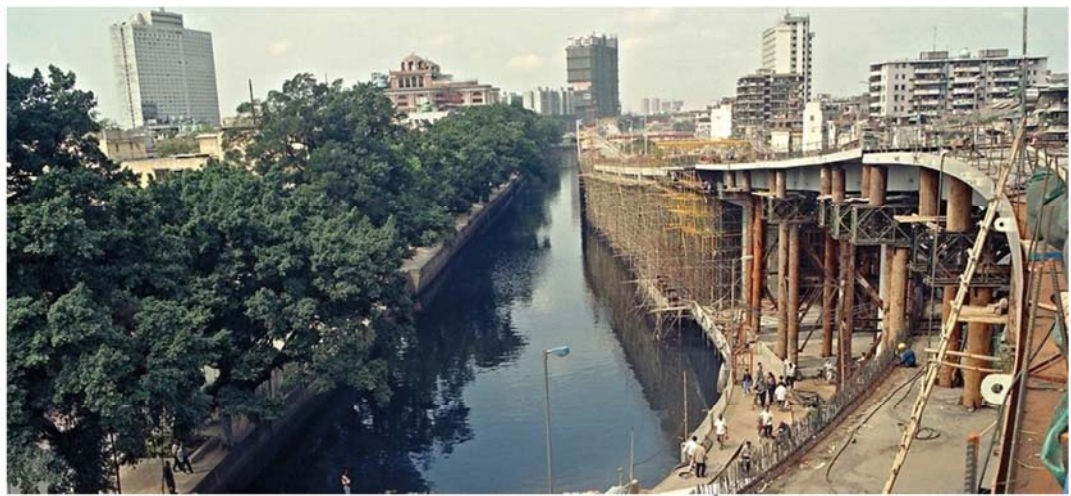


Examples of other national-wide large-scale infrastructure projects



The Inner Loop Road of Guangzhou
廣州內環路工程 (1997-2000)









Metro Line 1,2 and 3 in Guangzhou
(1999-2005)







Water delivery channel for the South-to-North Water Diversion project near Zhengzhou



The South-to-North
Water Diversion project





Examples for urban development study –
urban quality, composition and structure

(the case from the city of Quiyang)

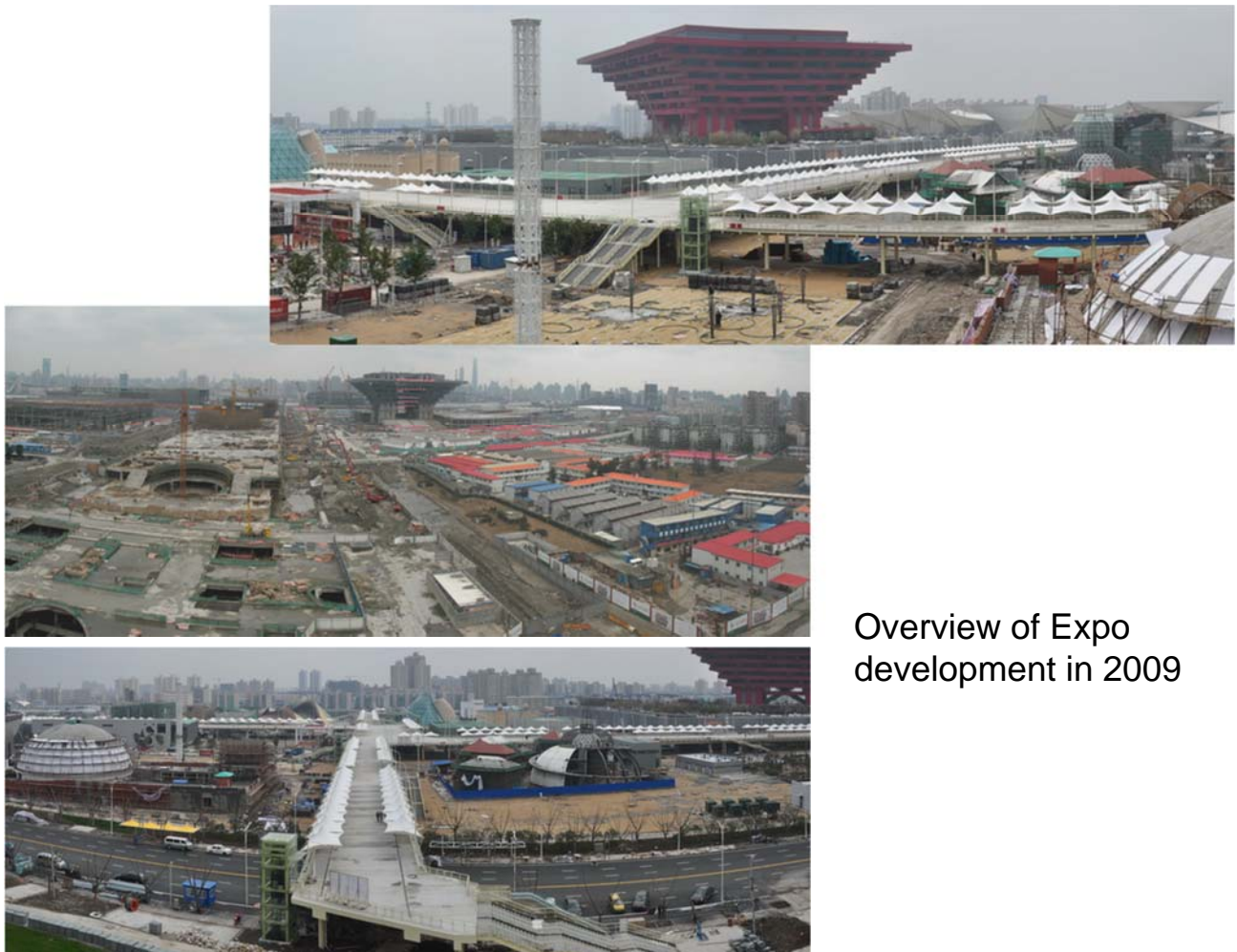


Urban composition/city layout of the city of Quiyang



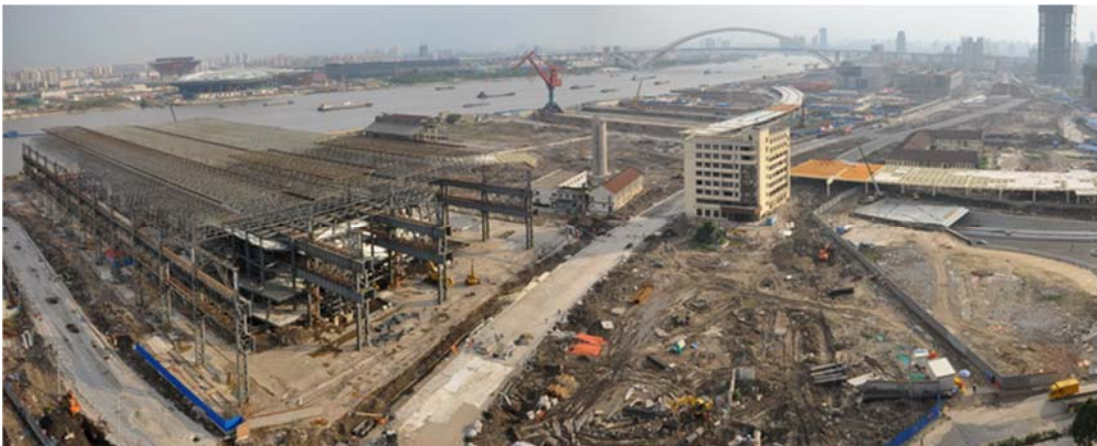


Example of special projects -
the development of the World Expo,
2007 - 2017



Overview of Expo
development in 2009

Overview of Expo development in 2009





Construction of the
China Pavilion



Construction of the
Culture Centre





Forming the Sun Valley
along the Expo Axis





Forming the Sun Valley
along the Expo Axis



The ship fabricating yard
under conversion as
viewed from an elevated
position in mid 2009



The ship Museum
as viewed from
the Pudong side

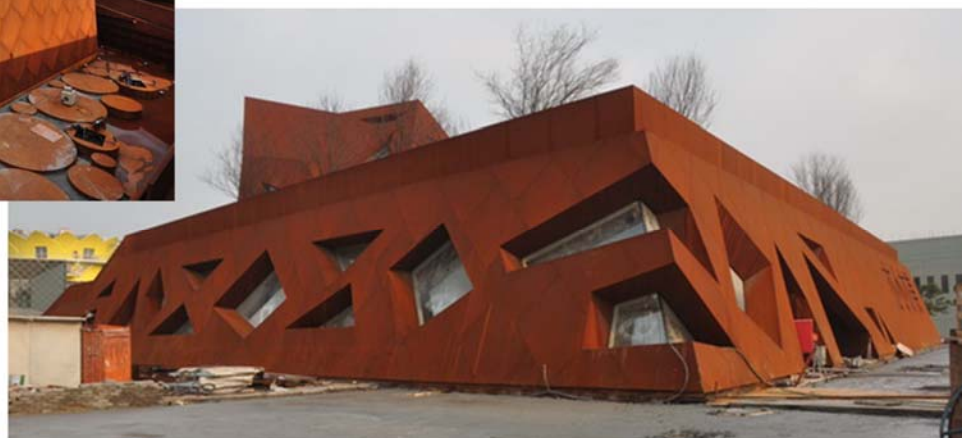




World Expo Venue on the Puxi area



Luxemoury Pavilion





Canada Pavilion



Pavilions for the Eastern European countries





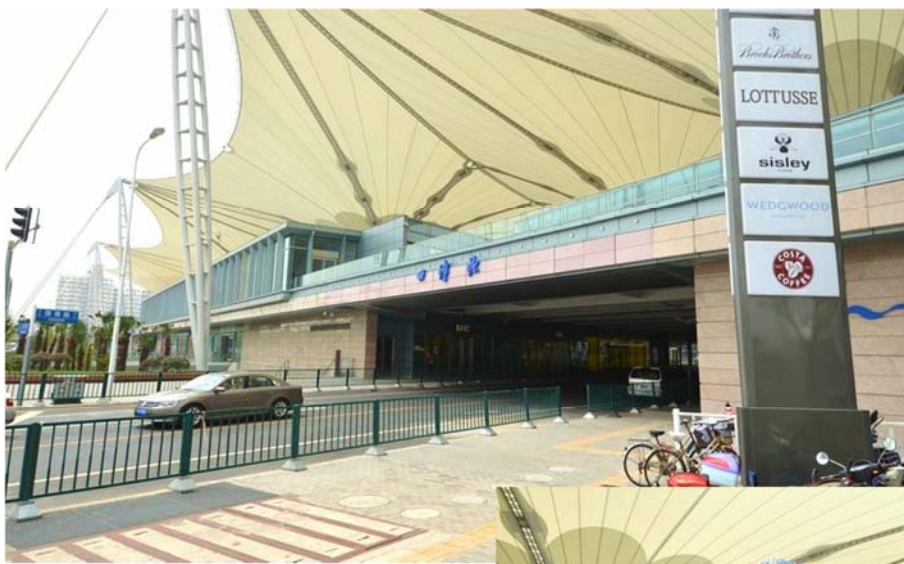
Korea Pavilion



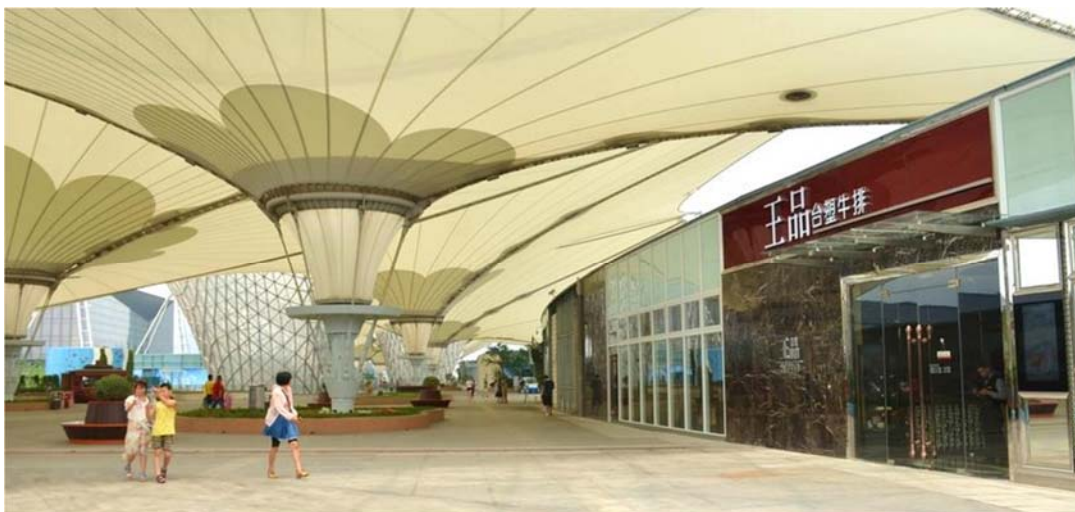
Nepal Pavilion



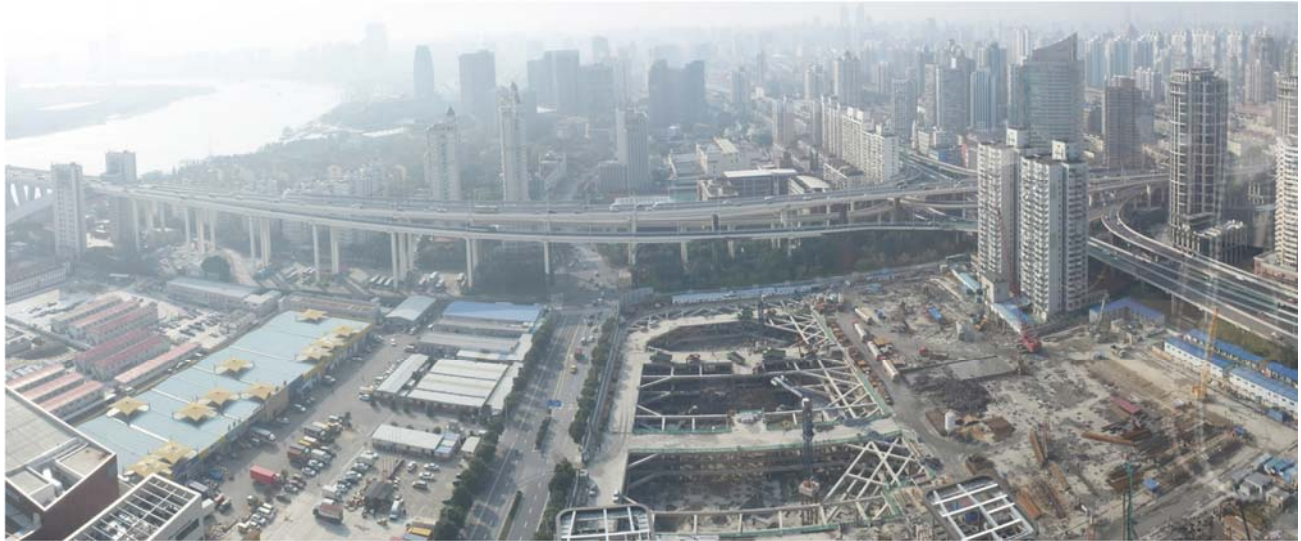
India Pavilion



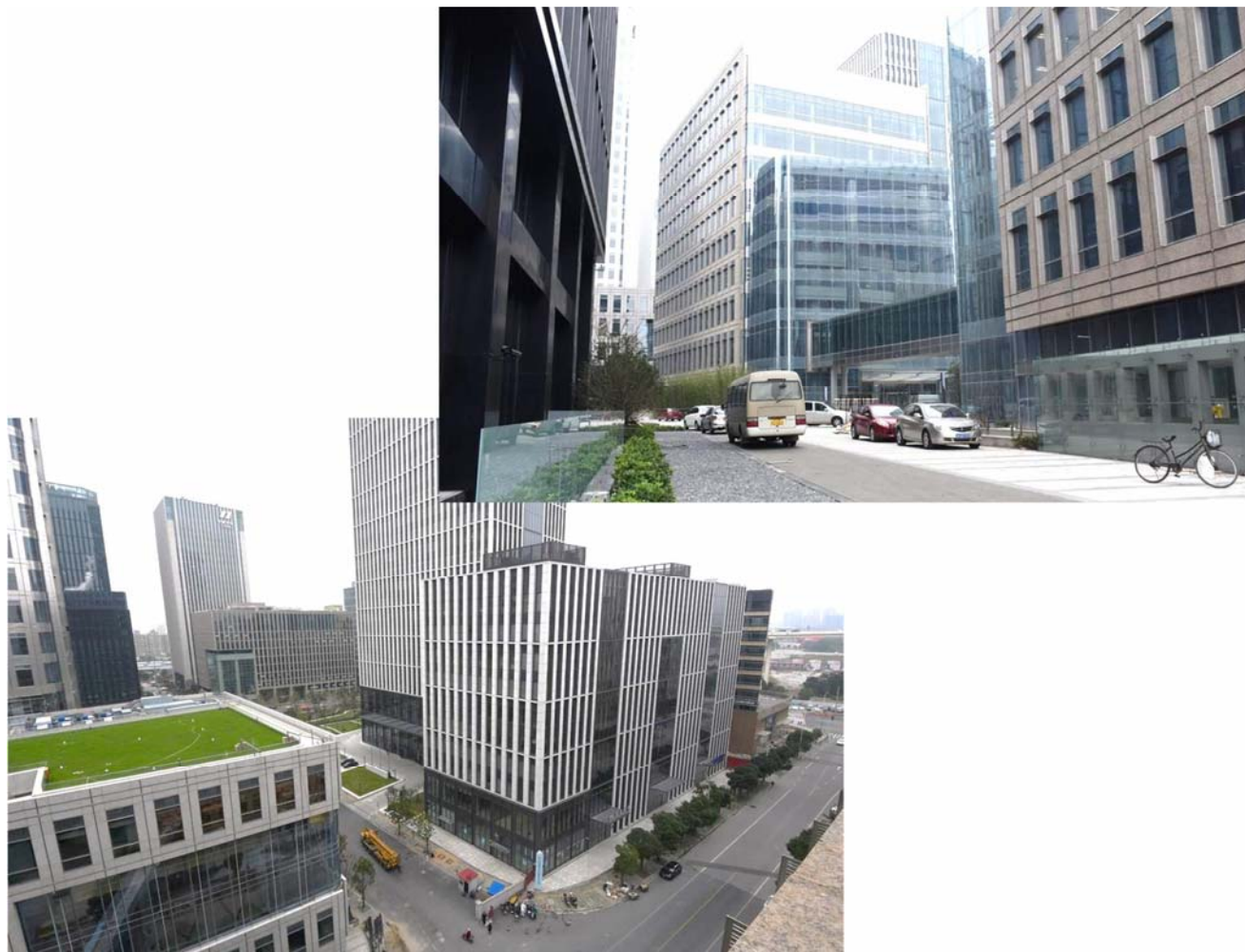
Current use of the Expo facilities







Building complex demonstrating environment friendly sustainable design. It is now using as an office by a design company (as seen in 2016)





Green belt along the
bank of Huangpu River

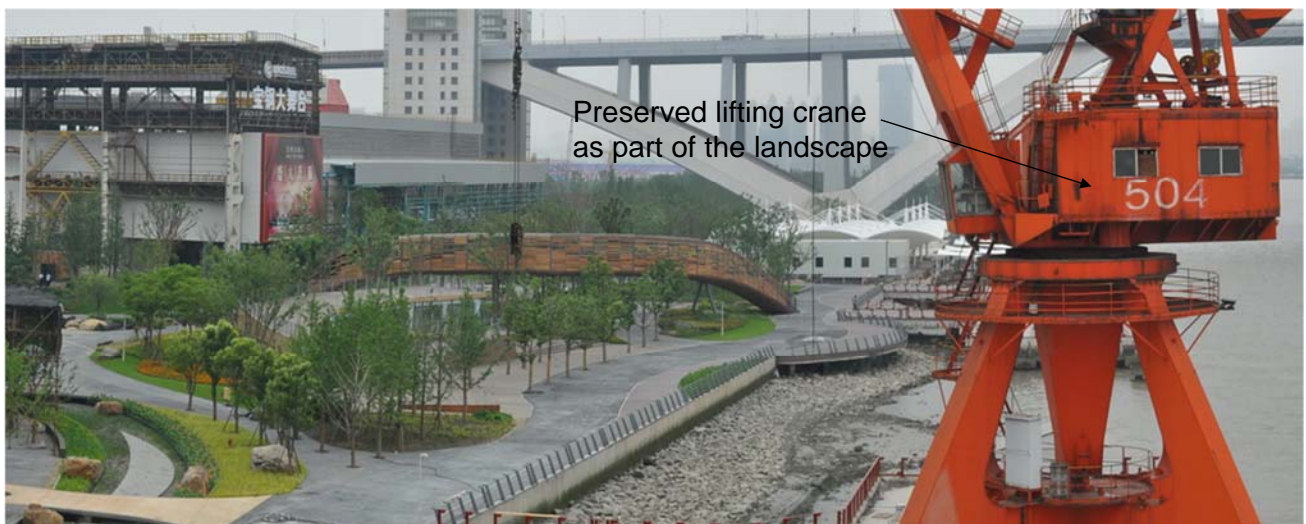
A pedestrian promenade and green belt along the Huangpu River basically formed before the opening of the Expo



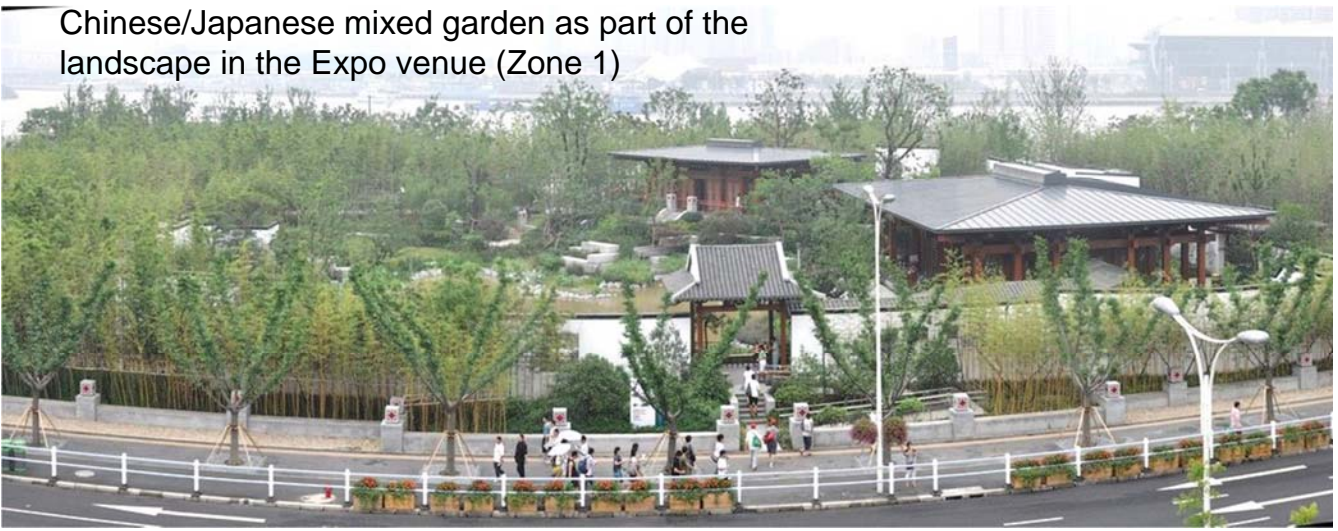
Landscaping belt along the eastern bank of Huangpu River



Preserved lifting crane as part of the landscape



Chinese/Japanese mixed garden as part of the landscape in the Expo venue (Zone 1)



End of Part 1 Presentation