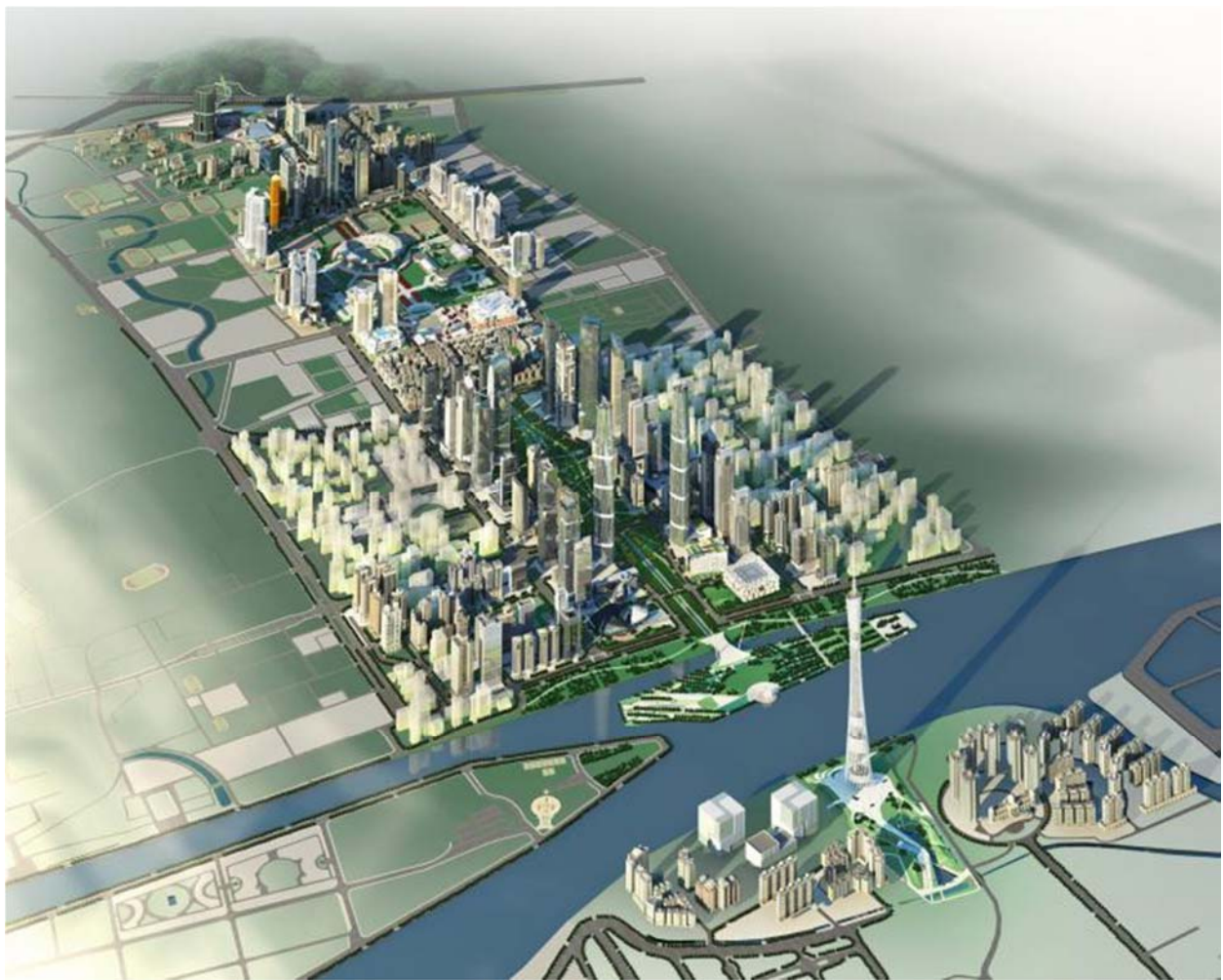


An introduction about the studies of  
Raymond Wong in China since 1995  
Part 2  
(Urban development related)

June 2017

Example of special projects -  
new Central Business District,  
Guangzhou



Guangzhou new city axis in Tianhe (in the progress of development in 2009)









Example of special projects -  
new Central Business District,  
Beijing





Typical open space provided by major commercial developments for general public



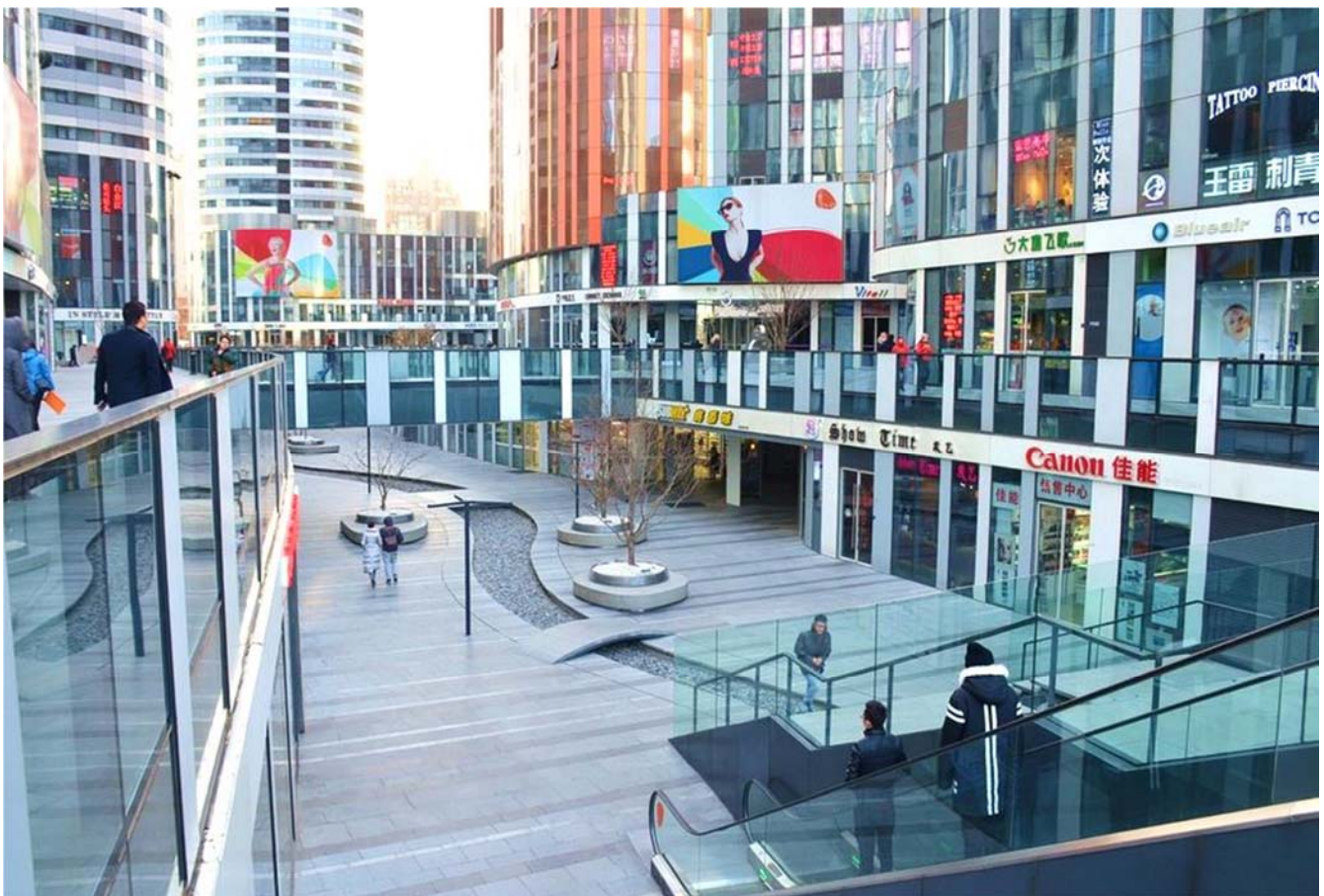
Typical open space provided by major commercial developments for general public



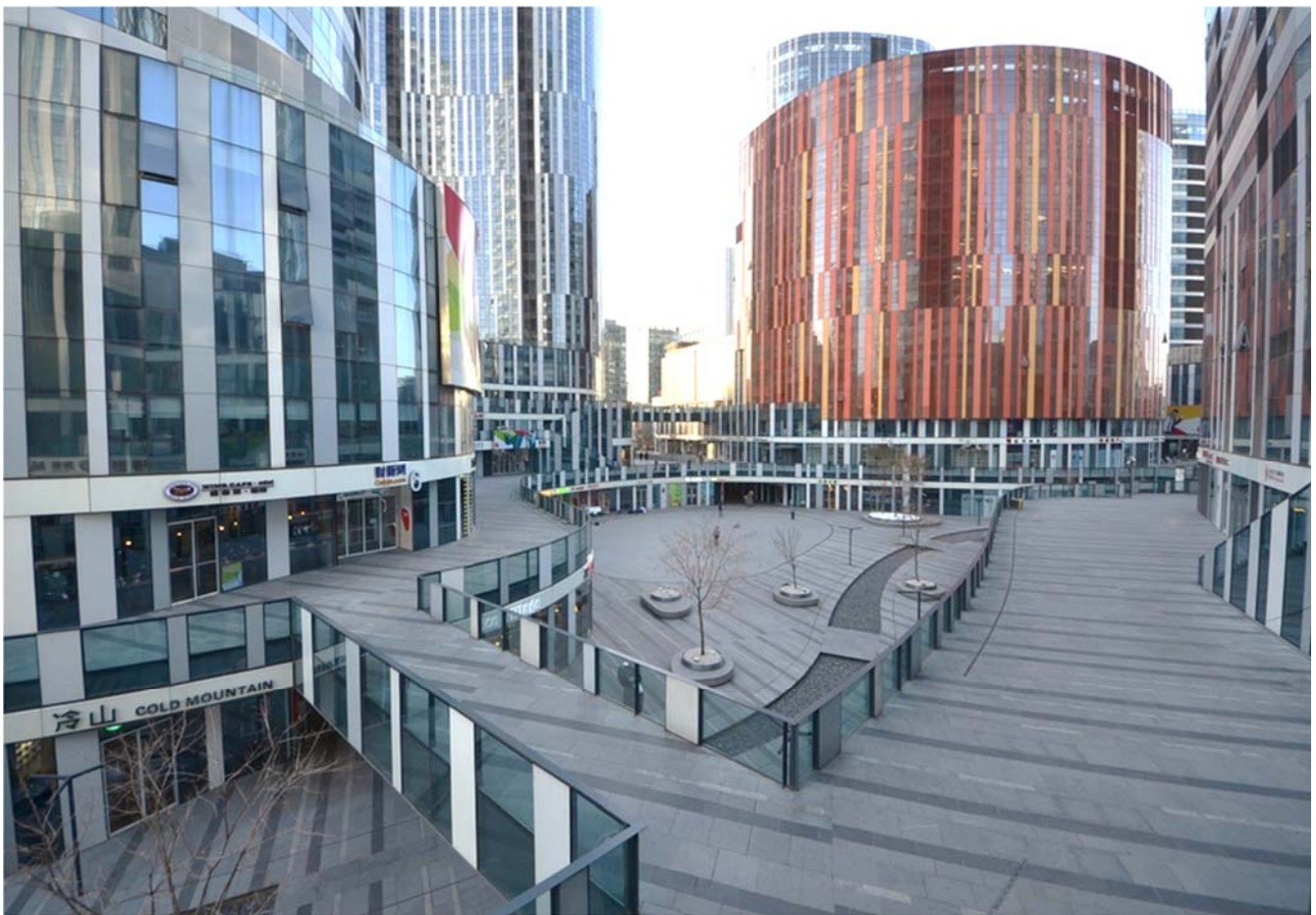




The plaza as the front entrance to the development

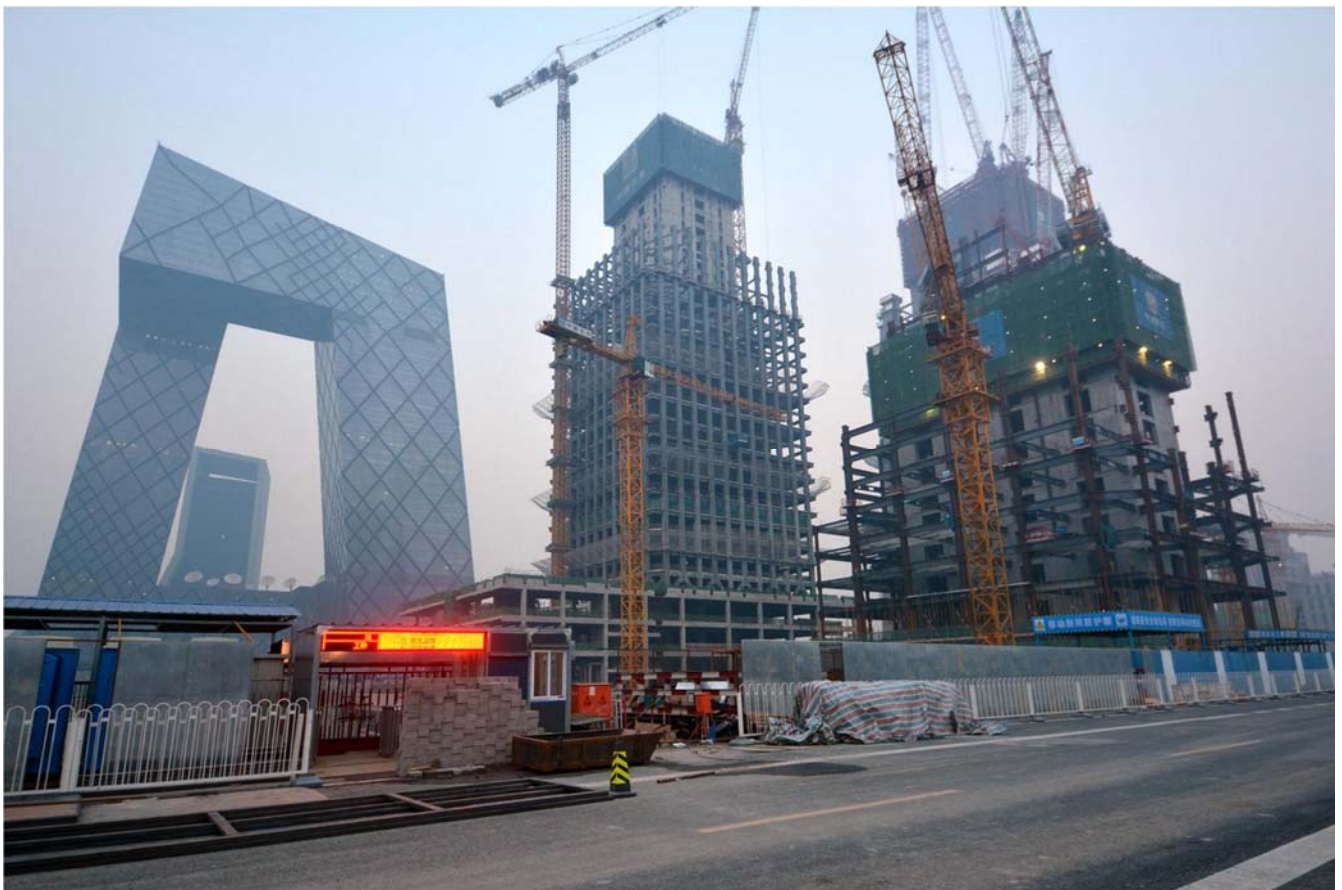






The plaza as the front entrance to Taikoo Li





New Central Business District in Chaoyang District on the side of CCTV Tower





The International Finance Square in Chengdu





The Taikoo Lane in Chengdu





Guangzhou Financial City  
廣州金融城













Example of special projects -  
Redevelopment of the Leide Village  
(a representation urban  
regeneration project)















The major part of the  
redevelopment –  
The International Grand City







The current views of  
the redevelopment  
and its vicinity



Other special theme studies,  
Development of new urban/town zone  
The Guangzhou Asian Game Venue and the  
associated developments













Other special theme studies,  
Urban renewal, environment regeneration











## Examples of environment and sustainability related projects

Greening examples in the City of Guangzhou







Greening example in the City of Shanghai



A user-friendly Pedestrian underpass at road junction in Shanghai



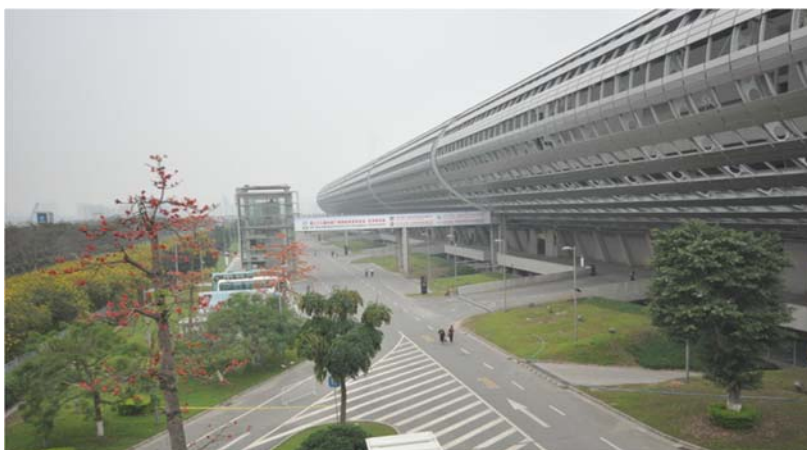
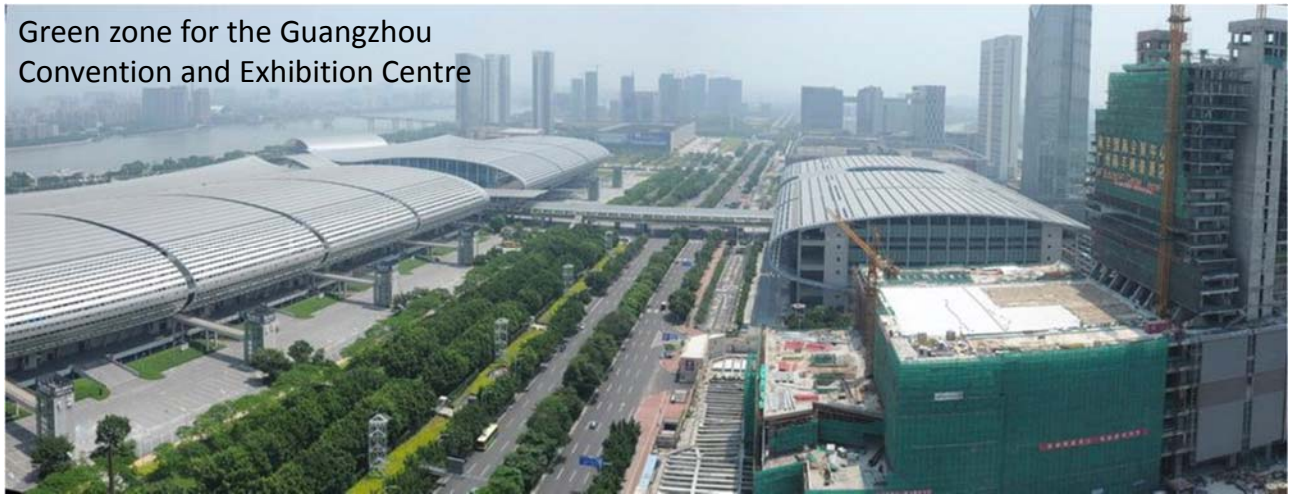




Examples of environment and sustainability related projects, the case in the south bank of Pearl River, Guangzhou



Green zone for the Guangzhou Convention and Exhibition Centre







The stations for the Automatic Light Rail running on this side (south-eastern) of the Pearl River







The station set-up



Power supply and rail system control unit for operation the light rail







Close-up of the train wagon





Promenade altogether about 3km with the automatic light rail running aside

Examples of environment and  
sustainability related projects,  
The reforming and upgrading of the  
Dong Ho Stream project

廣州東濠涌整治及環境優化計劃



攝於2000年所見仍未遷拆的樓房，現  
已成為景觀廣場及綠化區帶



從高處所見東濠涌高架中山三路南段的都市布局。最遠處橫越珠江的是江灣大橋。  
(攝於2002年)





東濠涌高架中山三路一帶所見的密集城市環境，及其在未遷拆前的區內狀況。



東濠涌高架東風東路與中山三路一帶在環境整治後的面貌(2010中)。





東濠涌中山三路南段在未進行  
淨化前的河涌及區內環境。



河涌整治及淨化後的社區環境。

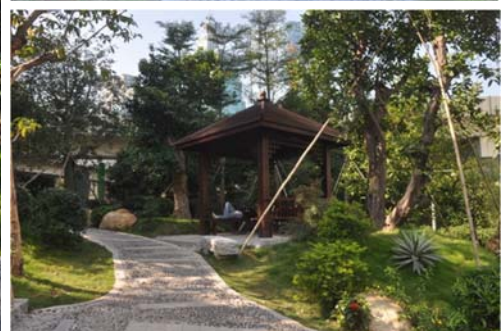
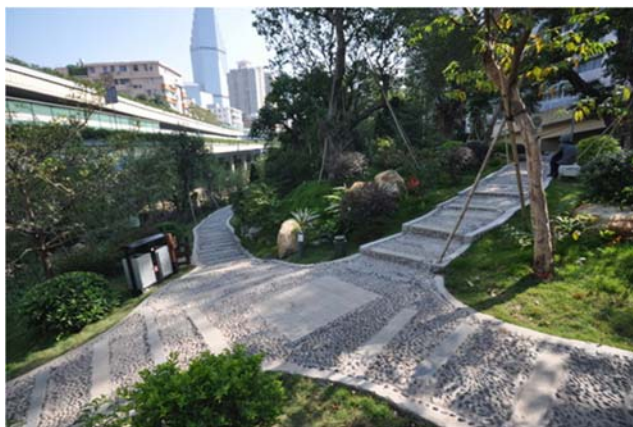




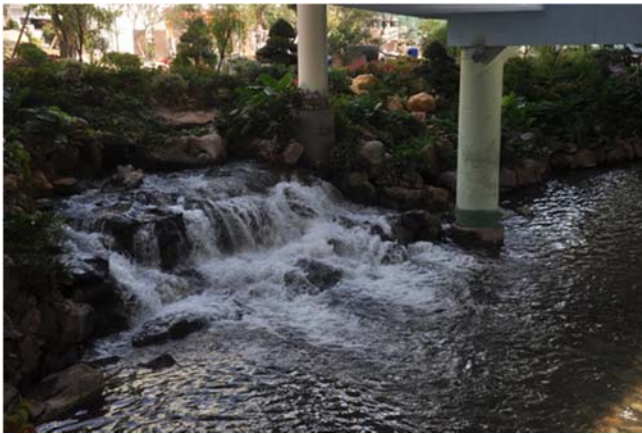
位於中山三路與越秀路的綠化廣場帶



綠化廣場及高架橋底  
水景區帶的景緻







東濠涌近東風東路，河涌從暗流加入迴環補水後回復明涌(open nullah)的出水口

Examples for heritage  
redevelopment  
(cases in Guangzhou and Shanghai)





The Shanghai cases

73















The Guangzhou cases





## Examples for heritage preservation projects



A historic building in Chongqing

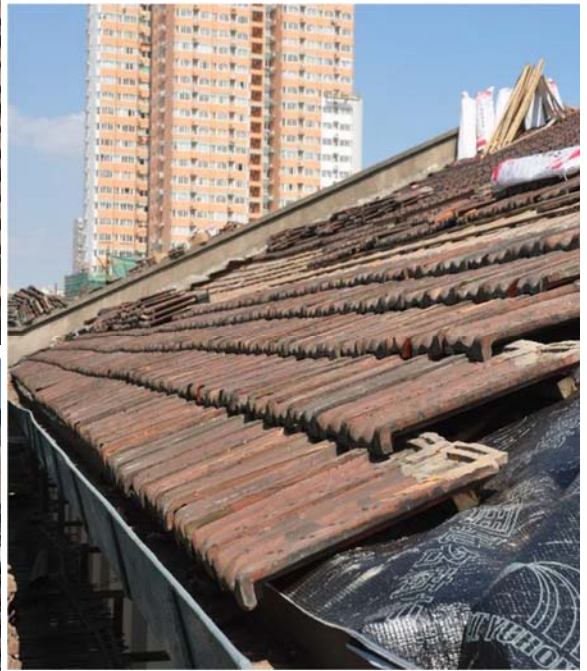




Old workshops and office buildings belonged to the previous shipyard are preserved and converted as new Expo facilities















A warehouse on the bank of Huangpu River converted into a club house. These images show the same building before and after the conversion

The building under conversion















Other special theme studies,  
New commercial districts, large-size  
commercial development and  
shopping malls



Pudong, Shanghai



CBD zone in Chongqing

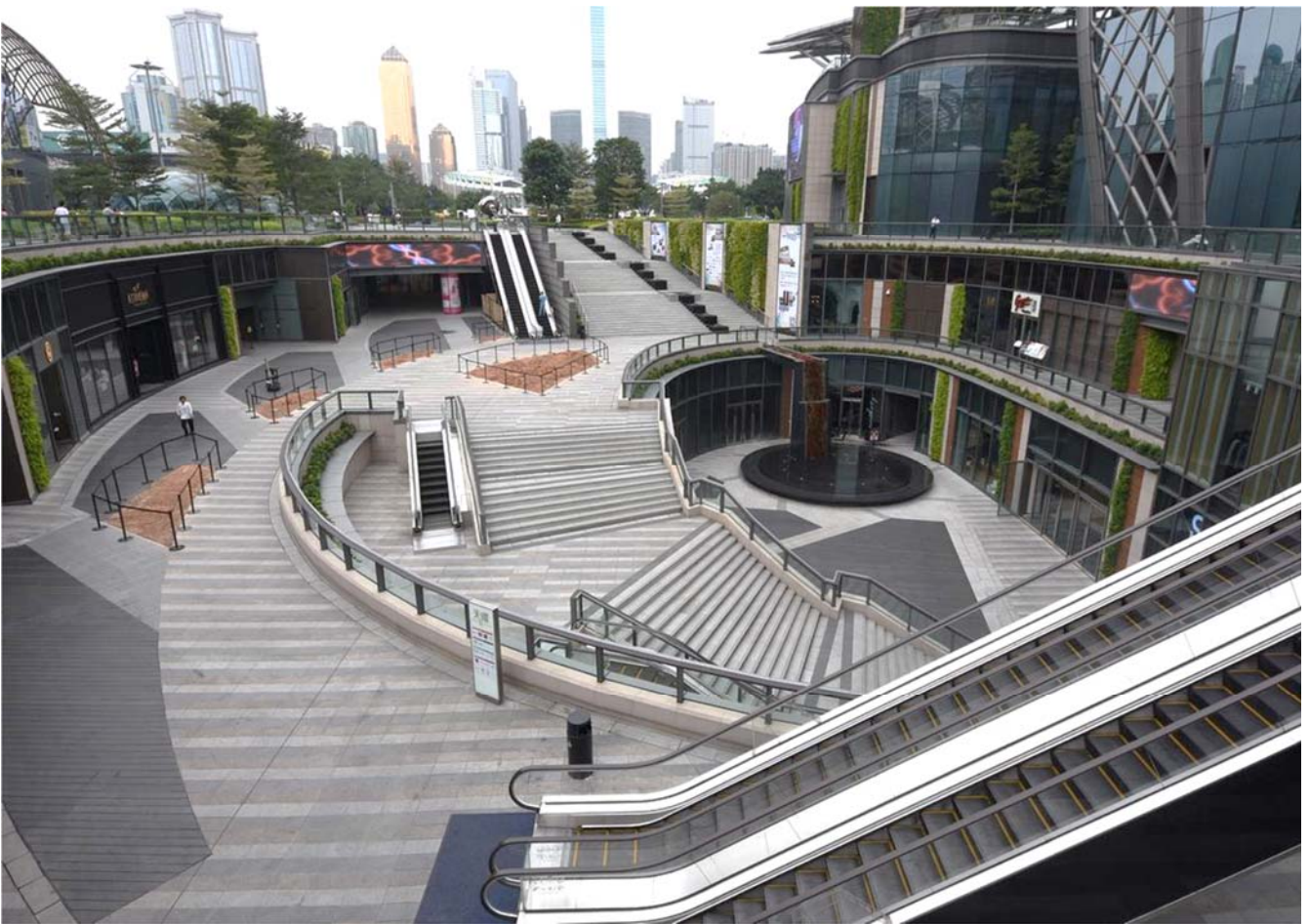




Parc Central,  
Guangzhou



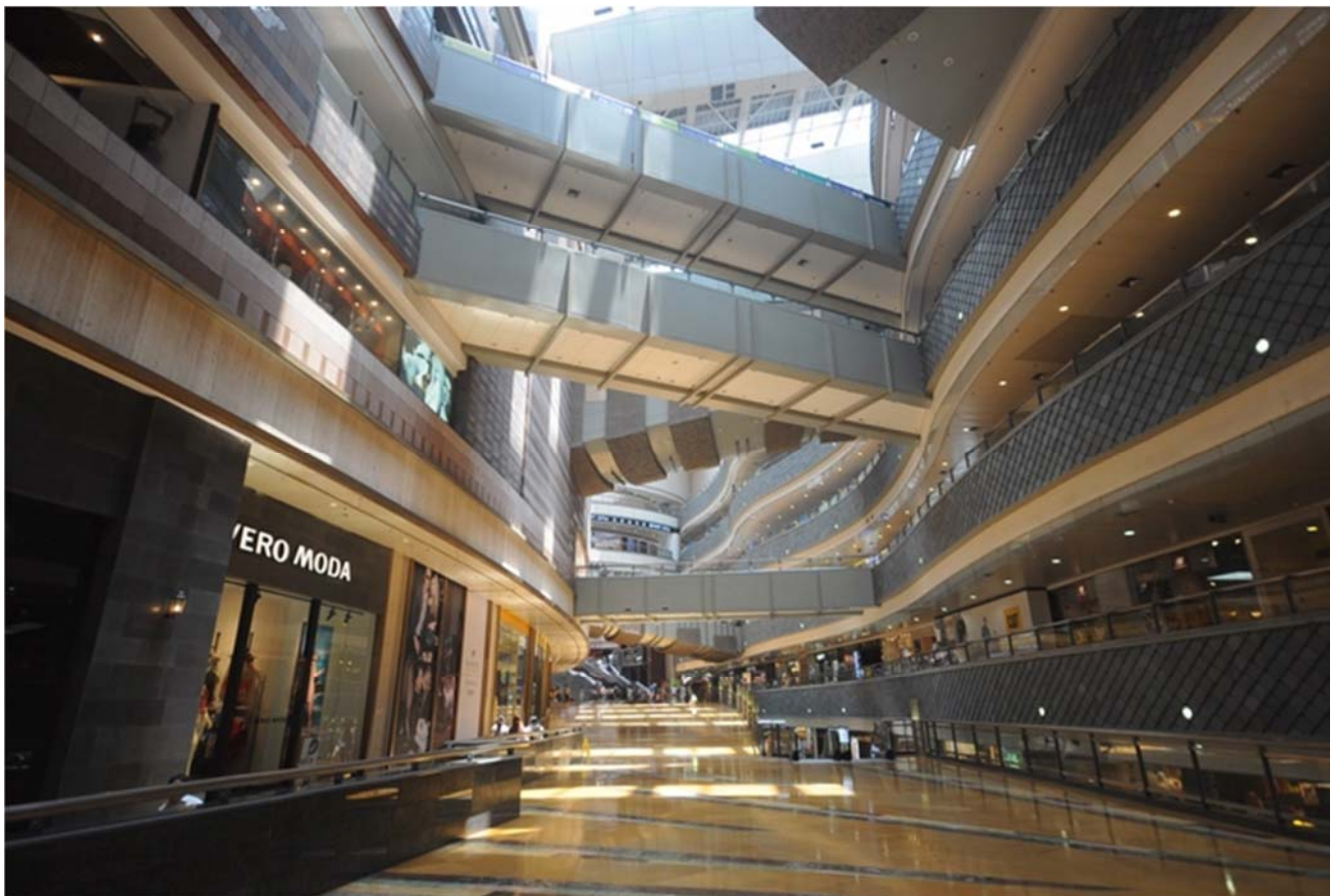






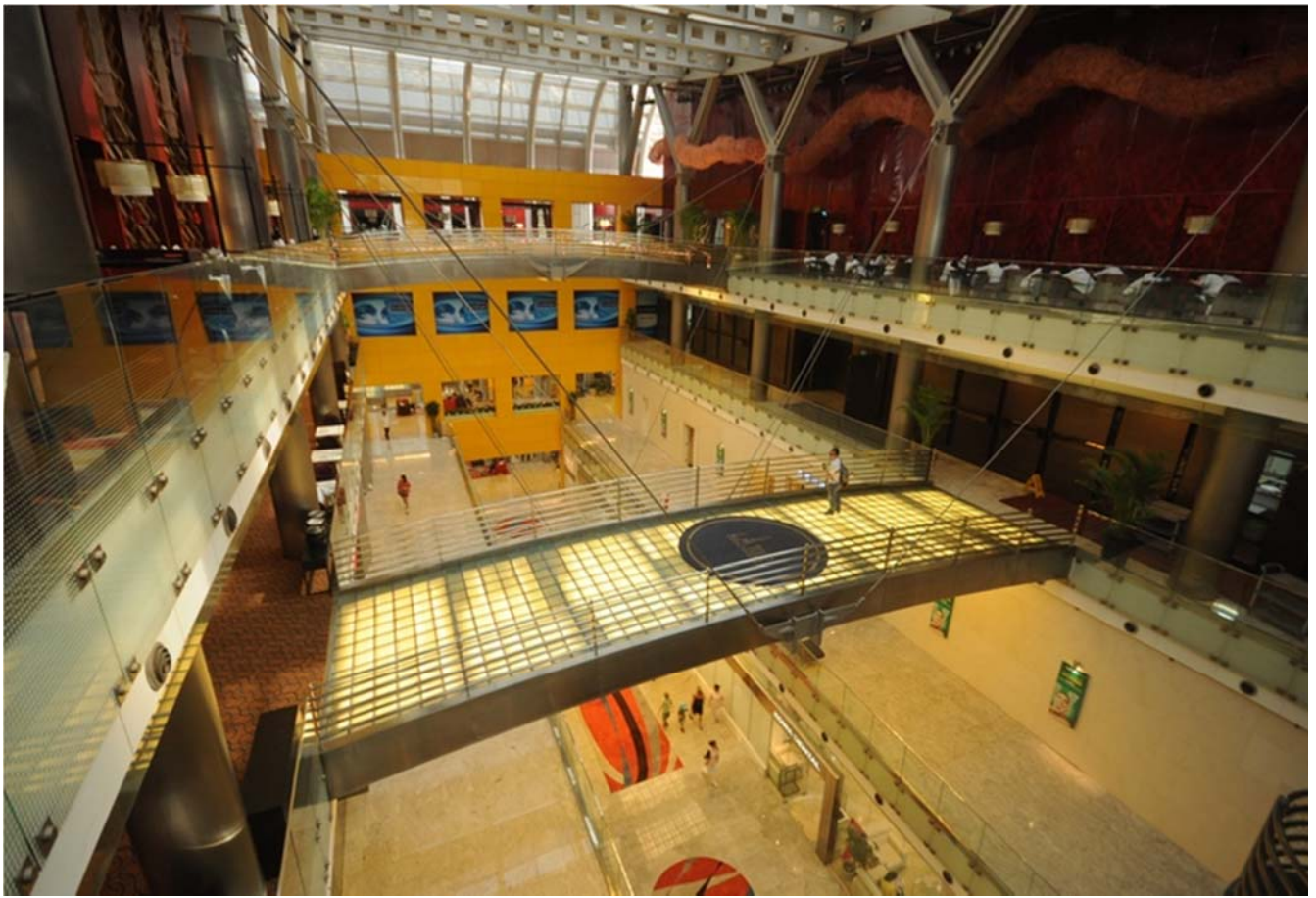


Commercial district, Chongqing



Interior of some of the representing malls

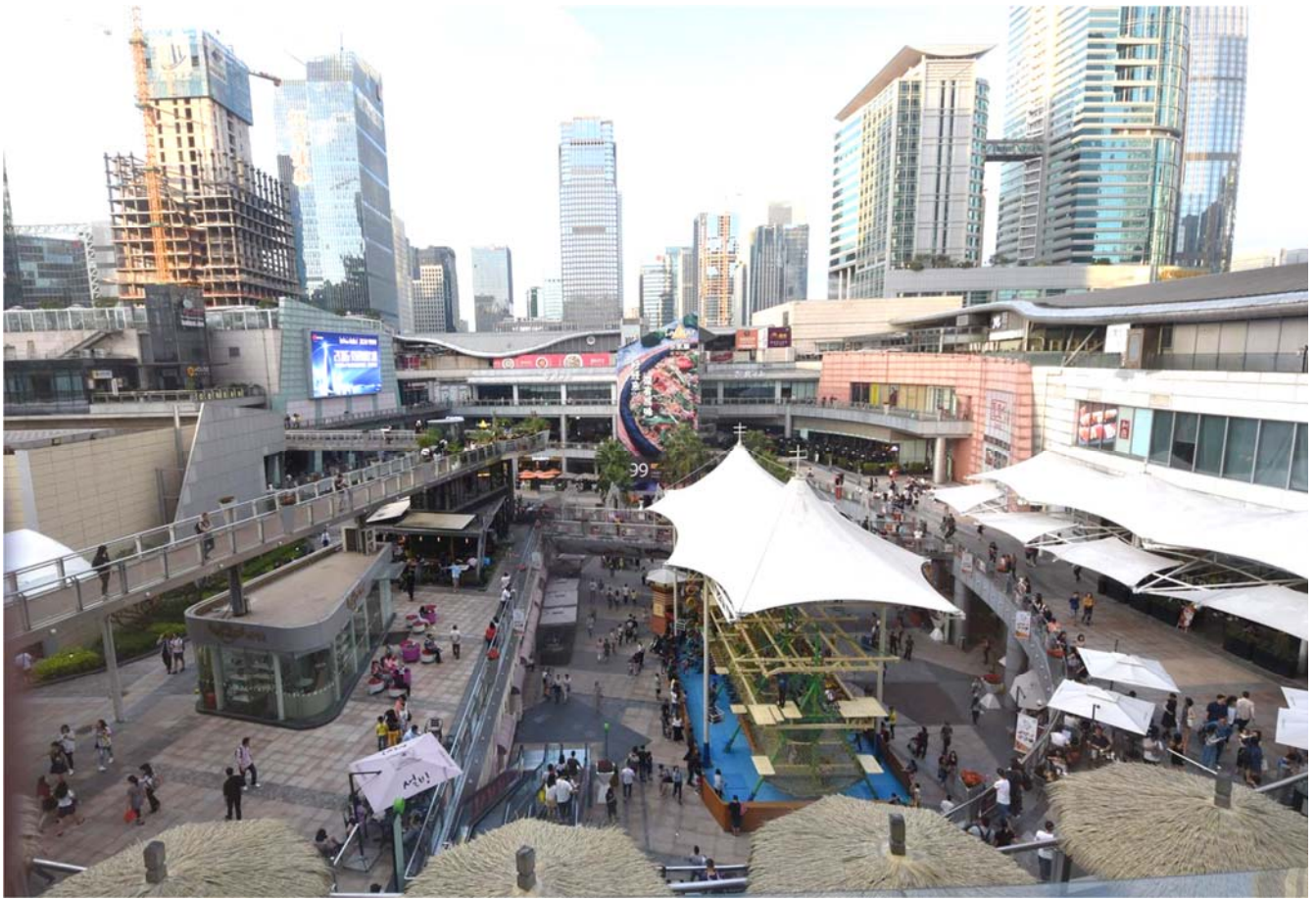










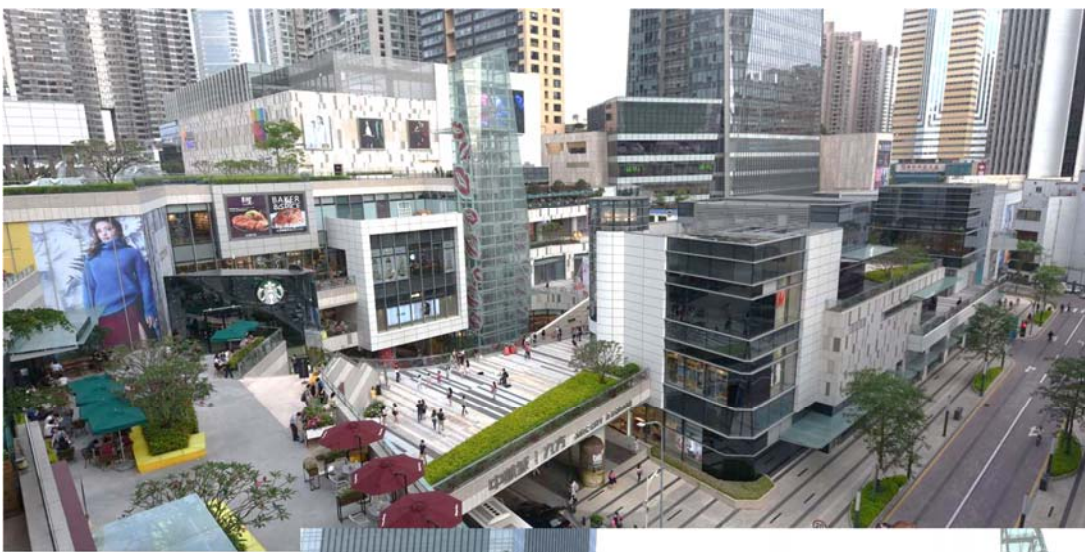


Coco Park (Mall) in Shenzhen



世紀匯，Shenzhen





世紀匯，  
Shenzhen



End of Part 2 Presentation

(To be continued later with  
a more detail version)