

A tale of 3 places –
An Update/Review of Contemporary
Construction Practice in
Hong Kong, China and UK

Part 3, Hong Kong

Speaker: Raymond Wong Wai-man
City University of HK
31 May 2018

The case of IFC



Overview of Northern Site (28-08-2000)



Top View of Northern Site (08-03-2001)



Overview of Northern Site (12-04-2001)



Top View of Northern Site (26-04-2001)



Overview of Northern Site (14-JUN-2001)



Forming the 62m dia cofferdam



Final stage of reclamation and general foundation to the Hong Kong Station and IFC Phase I & II (1995)



Overview of the Central Reclamation with the Hong Kong and IFC developments



Construction of the core wall inside the cofferdam as seen in August 2000

Top View of NET Basement (07-11-2000)



Detail of the completed outrigger system on 6/F and the building frame on top





Gradual completion of the outrigger systems



Anchor frame before embedding with outer layer of reinforced concrete



Corner steel post embedded in the core wall

Embedding the anchor frame into the core wall



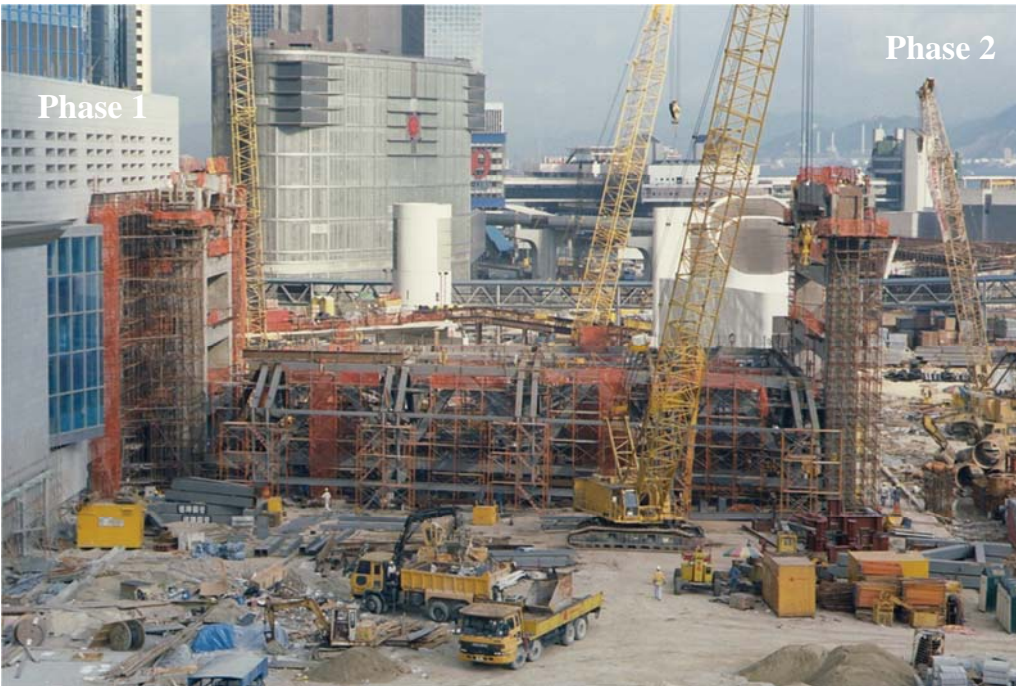
The excavation process



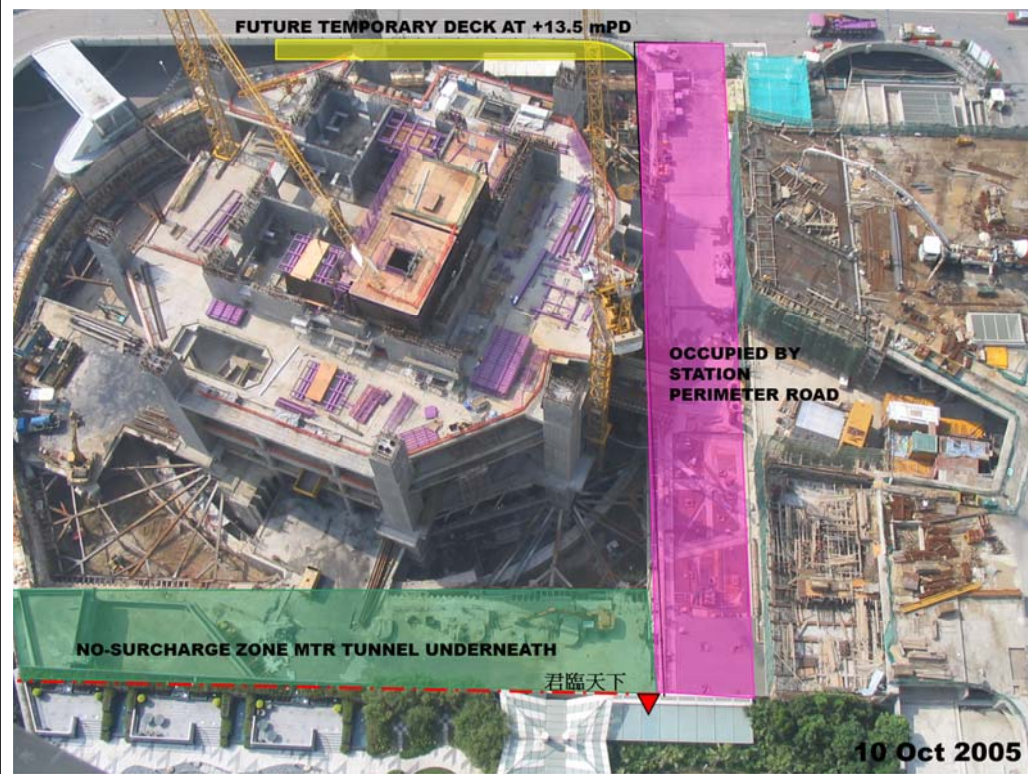
Muck opening provided on the ground slab for the removal of spoil

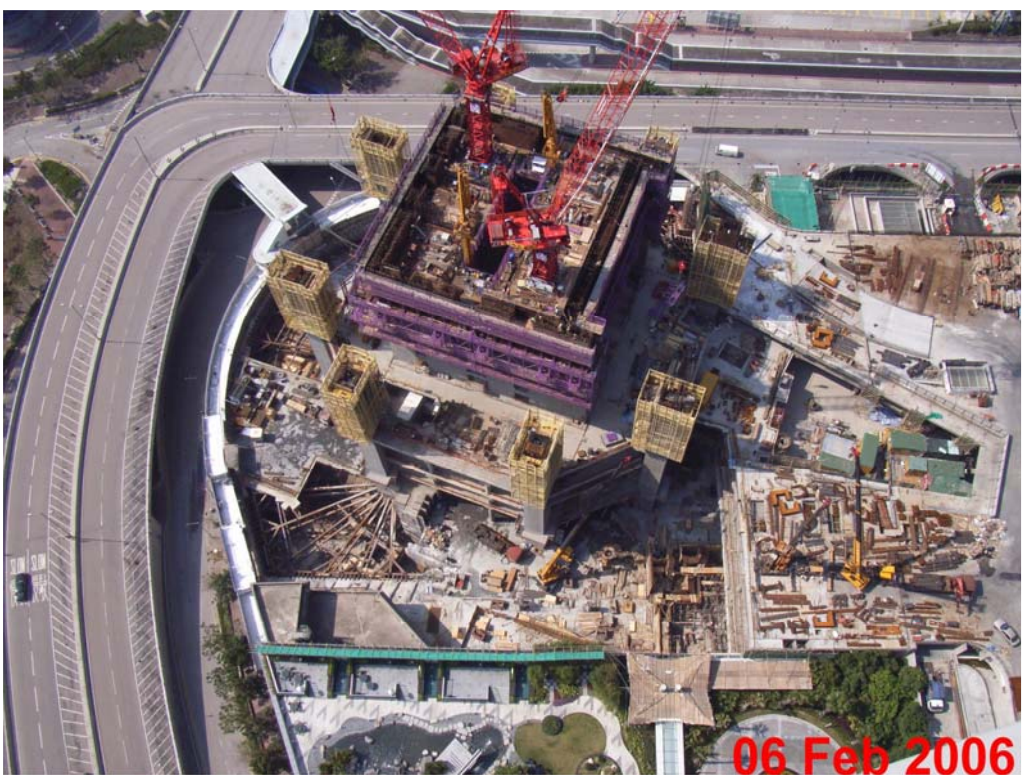


Basement structure around the muck opening soon to complete, slab will be reinstated afterward



The case of ICC







The case of Langham Place



The site as seen in June 2000 at the early stage of foundation construction



Commencement of excavation to form the raft foundation for tower block



Slab and core wall below the transfer plate



Forming of the floor in two phases



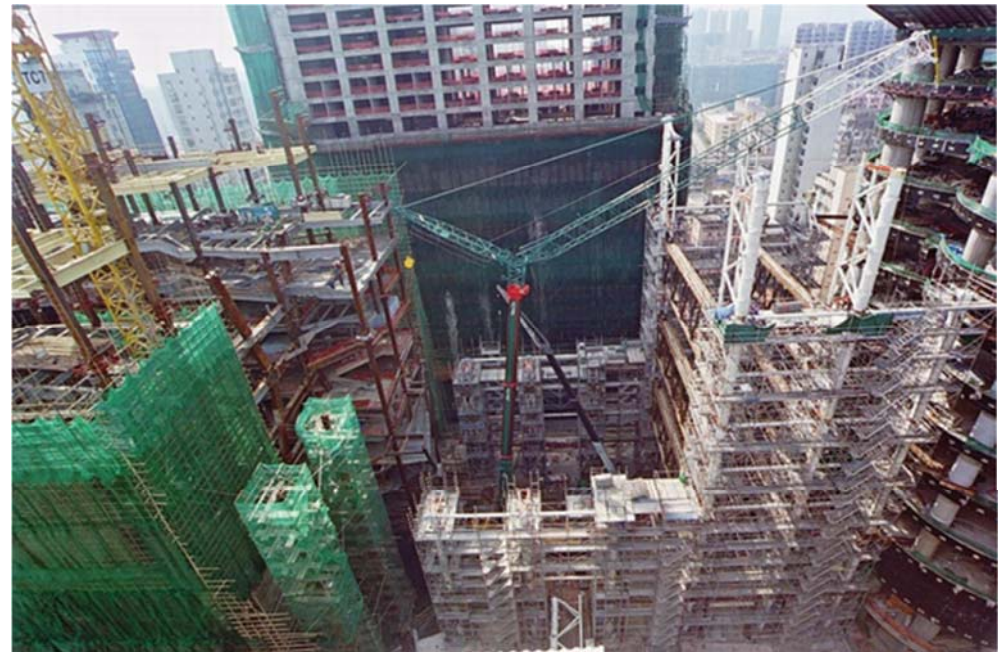
Vehicular ramp

Forming the vehicular ramp at Shan Tung Street which served also as the temporary access for the removal of spoil from the basement





Forming the steel frame of the retail podium



The 30m high Grand Atrium space took shape



Sequential views to see the gradual completion of the podium (1)



Sequential views to see the gradual completion of the podium (4)

Roof Features



Lift core

Hotel room block



The case of the Centennial Campus, Hong Kong University



HKU Centennial Campus –
Model showing the future
campus layout and design







The case of Celestial Heights Project,
Ho Man Tin

Stage 1 using Open Cut Excavation



Plant Mobilization and leveling of site at early stage



Podium structure extending close to the bore-pile wall and finally touching the toe of the wall as the permanent support at its base



Closer look of the shoring arrangement for the bore-pile wall and the commencement of the stage 3 formation



Cutting into the remaining portion of slope near the Tin Kwong Road entrance

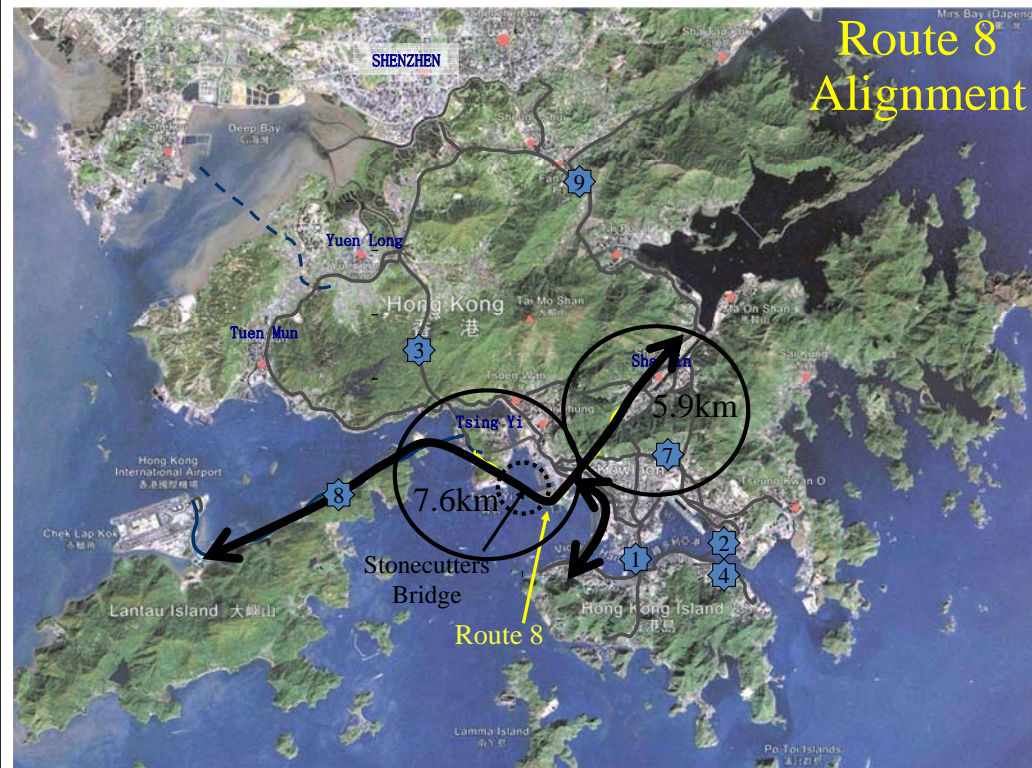




The advancing basement Basement/semi basement approaching the cut-off wall of slope finally forming a permanent supporting structure



The Route 8













The Express Rail Link



The terminus site (south) as seen in mid 2012



Overview of site as in August 2012



Overview of the southern tip of site as in May 2013



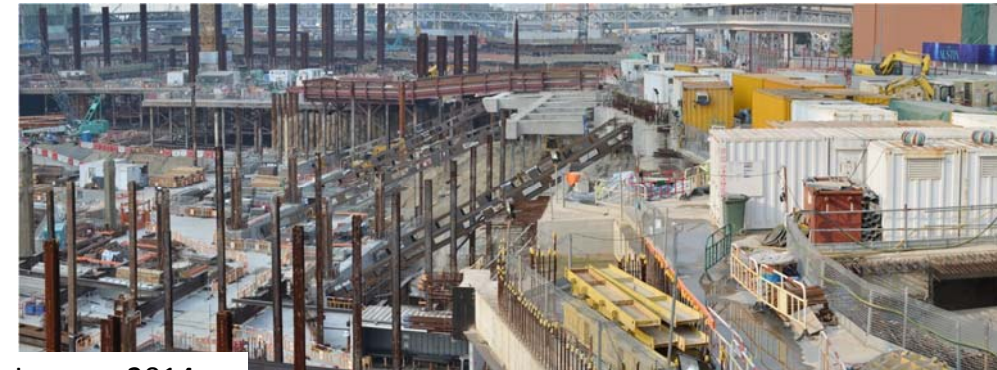
Overview of the southern tip of site as in August 2013



August 2013



Overview of site as
in November 2013



January 2014



Overview of the southern tip of site as in April 2014



Overview of the terminus structure as in March 2015



Complicated construction layout as seen in mid 2015



Temporary carriageway
(Lin Cheung Road)





Temporary diversion of a slip road
(West Kowloon Interchange)



The case of Hong Kong-Macao-Zhuhai
Link Bridge







