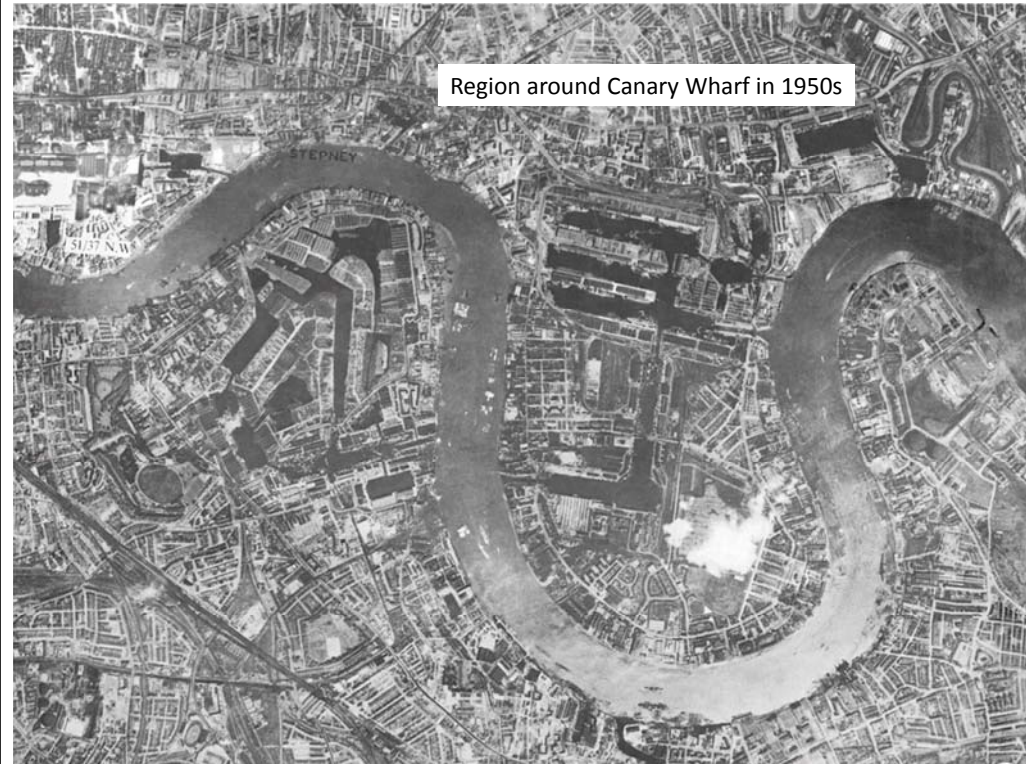


A tale of 3 places –
An Update/Review of Contemporary
Construction Practice in
Hong Kong, China and UK
Part 2, London

Speaker: Raymond Wong Wai-man
City University of HK
31 May 2018

Developments in Canary Wharf

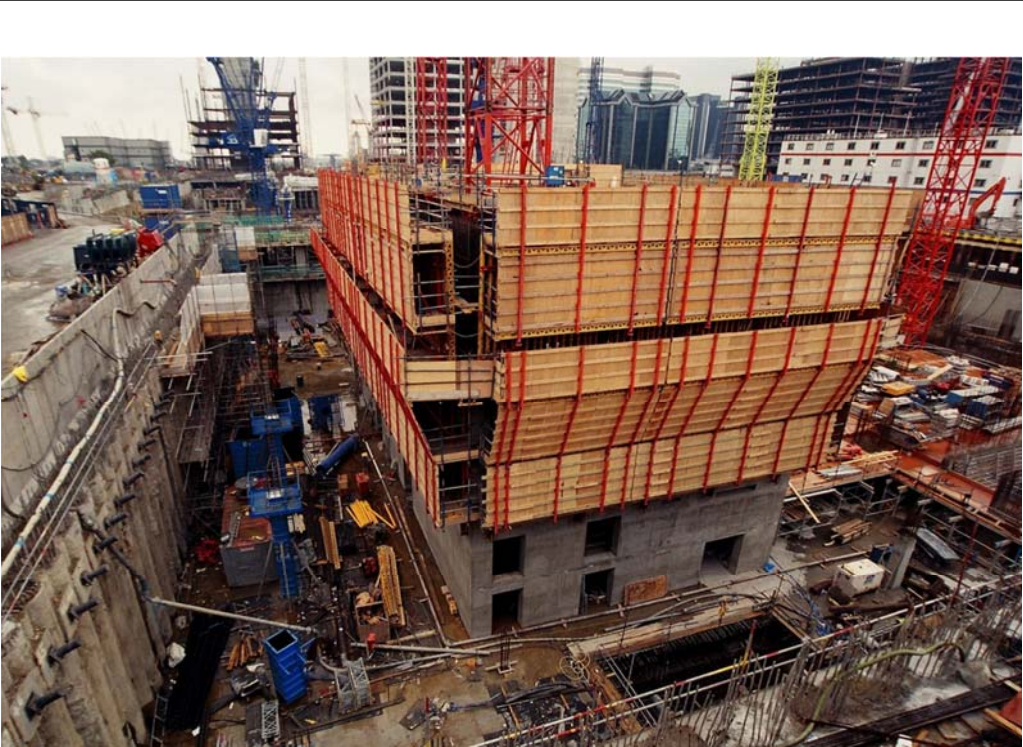


Region around Canary Wharf in 1977



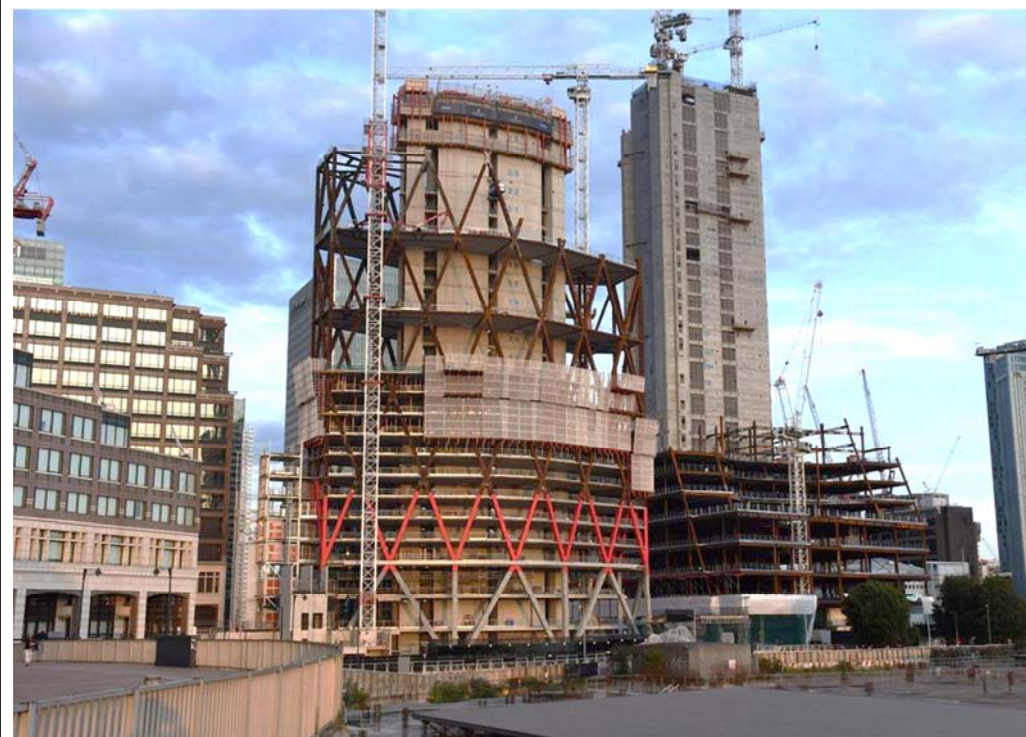


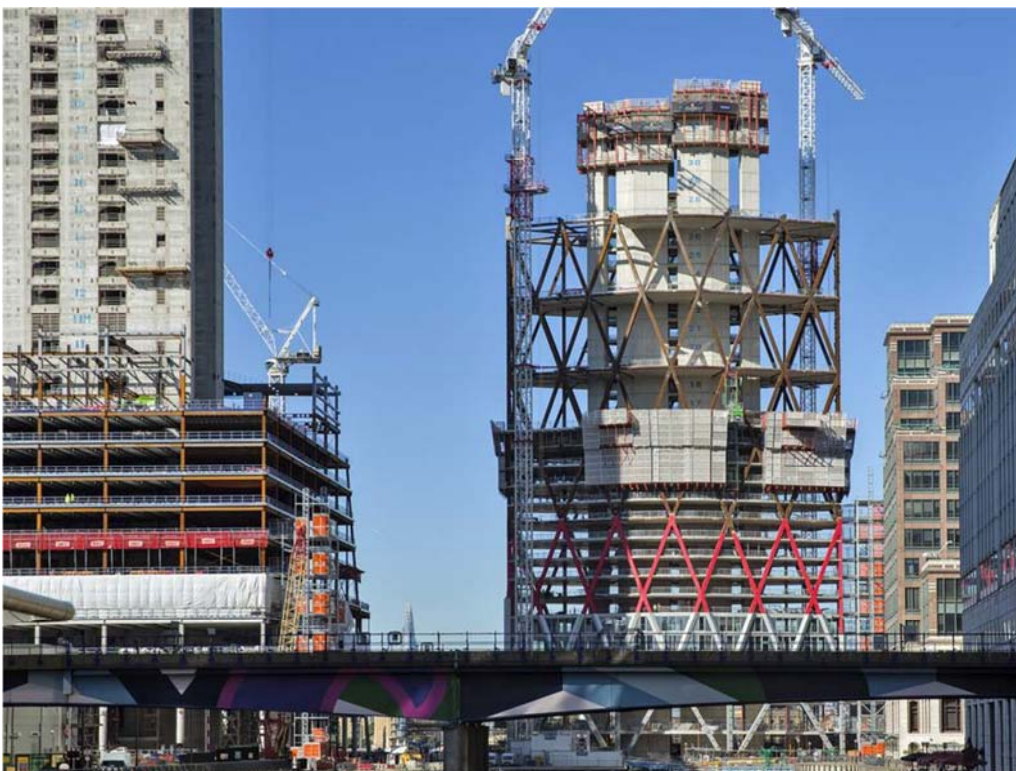
Canary Wharf as an active Construction site as seem in the 1990s





Construction sites along the
River Thames as seen in late-2017





The case of Regent Canal and the
King's Cross complex development

The Granary Square Project



Junction Proposals

- 1. Canal Reach / York Way**
Open for access to Urbanest's student accommodation building (completed in July 2013) and for construction vehicles. Initially this will be a priority junction. The junction will be completed when Zone W is developed.
- 2. Rubicon Court / Saxon Court / York Way**
Not a signalled junction. Currently in operation.
- 3. Plot R8 / York Way**
Public access has been installed via a temporary staircase. A permanent pedestrian and cycle access will be provided at a later stage.
- 4. York Way / Copenhagen Street**
Traffic signals installed. Access to Handyside Street for service vehicles and construction traffic.
- 5. King's Boulevard / Goods Way / Regent's Canal Bridge**
Temporary zebra crossing now operational. Upgrade to be completed when King's Boulevard opens to buses and taxis (earliest 2017).
- 6. Camley Street / Goods Way / Pancras Road**
The existing traffic signals have been re-configured.
- 7. Pancras Road / King's Boulevard**
Traffic signals installed. Full signal junction when King's Boulevard opens to buses and taxis (earliest 2017).





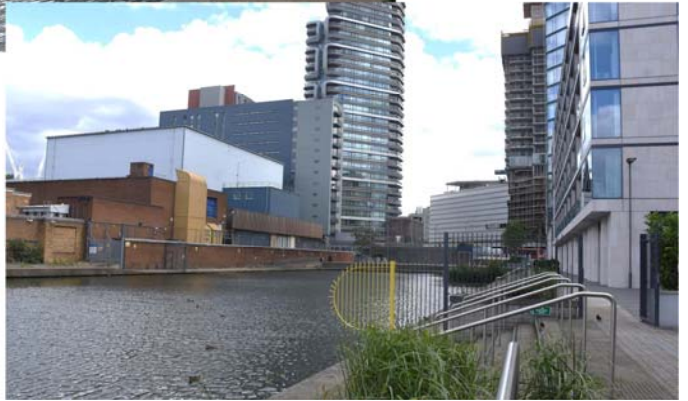


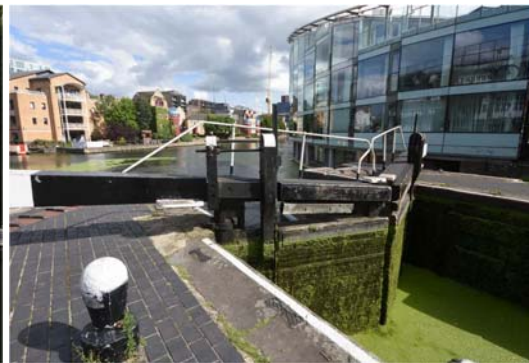
Commercial Area in the Granary Square Project



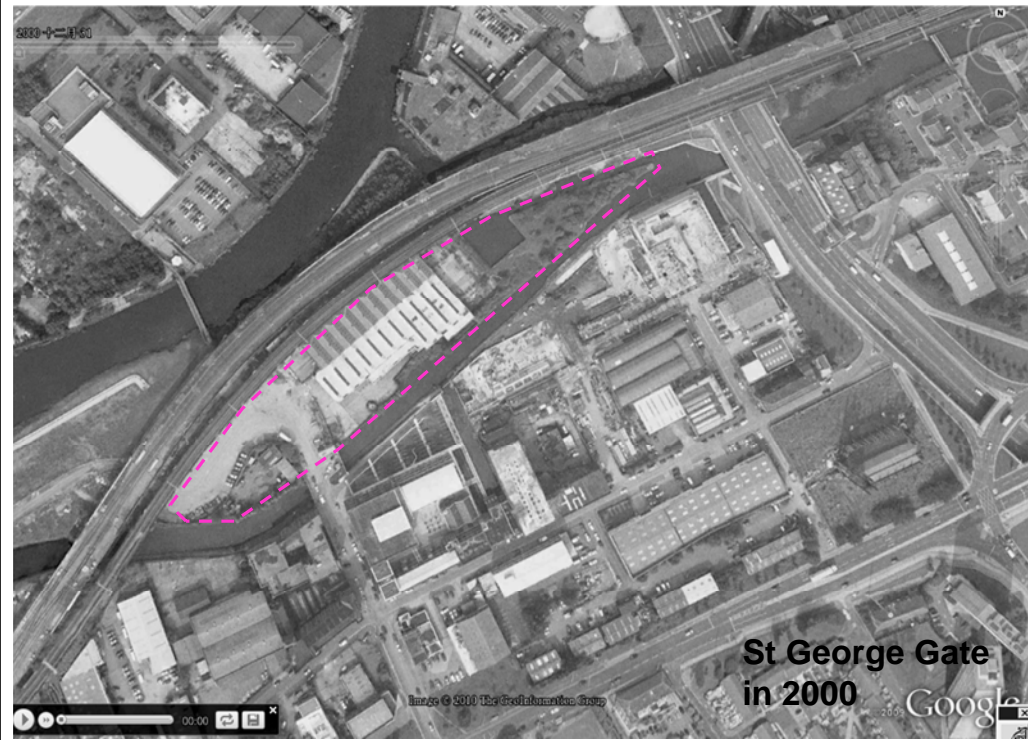


City Road Basin residential and commercial complex development





Revitalizing previous
workshops and warehouses
into a residential estate –
the St. George Island

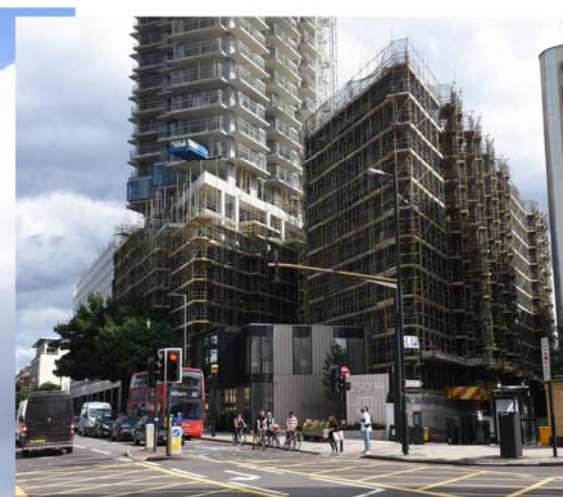






Other residential developments





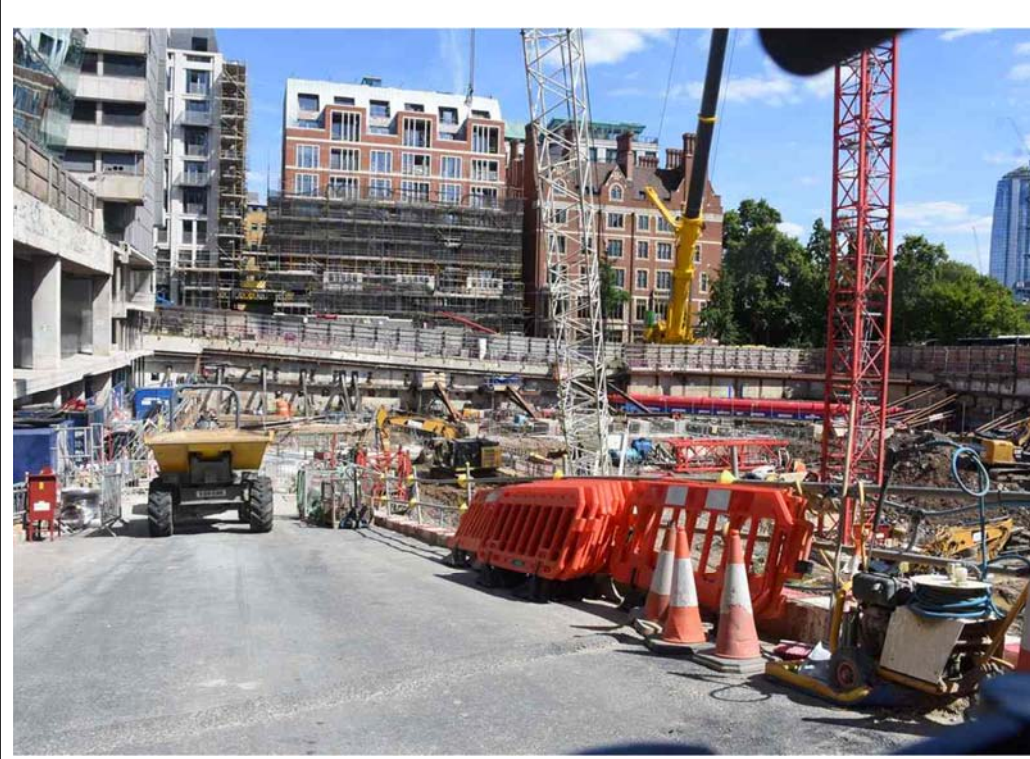






Project using prefabricated panels for the building facade





Carrying out a condition survey for an old building preparing to conserve and revitalize







Other examples of significant





End of this part of presentation