

Updated of the Work Status/Progress of the Exhibition Station of the Shatin-Central Link

September 2018

It is one of the routine works of Raymond Wong as an independent researcher to revisit and update the projects from time to time that he studied. Recently he revisited the Exhibition Station of the Shatin-Central Link. In the following slides he showed a visual update of the work progress of the project.

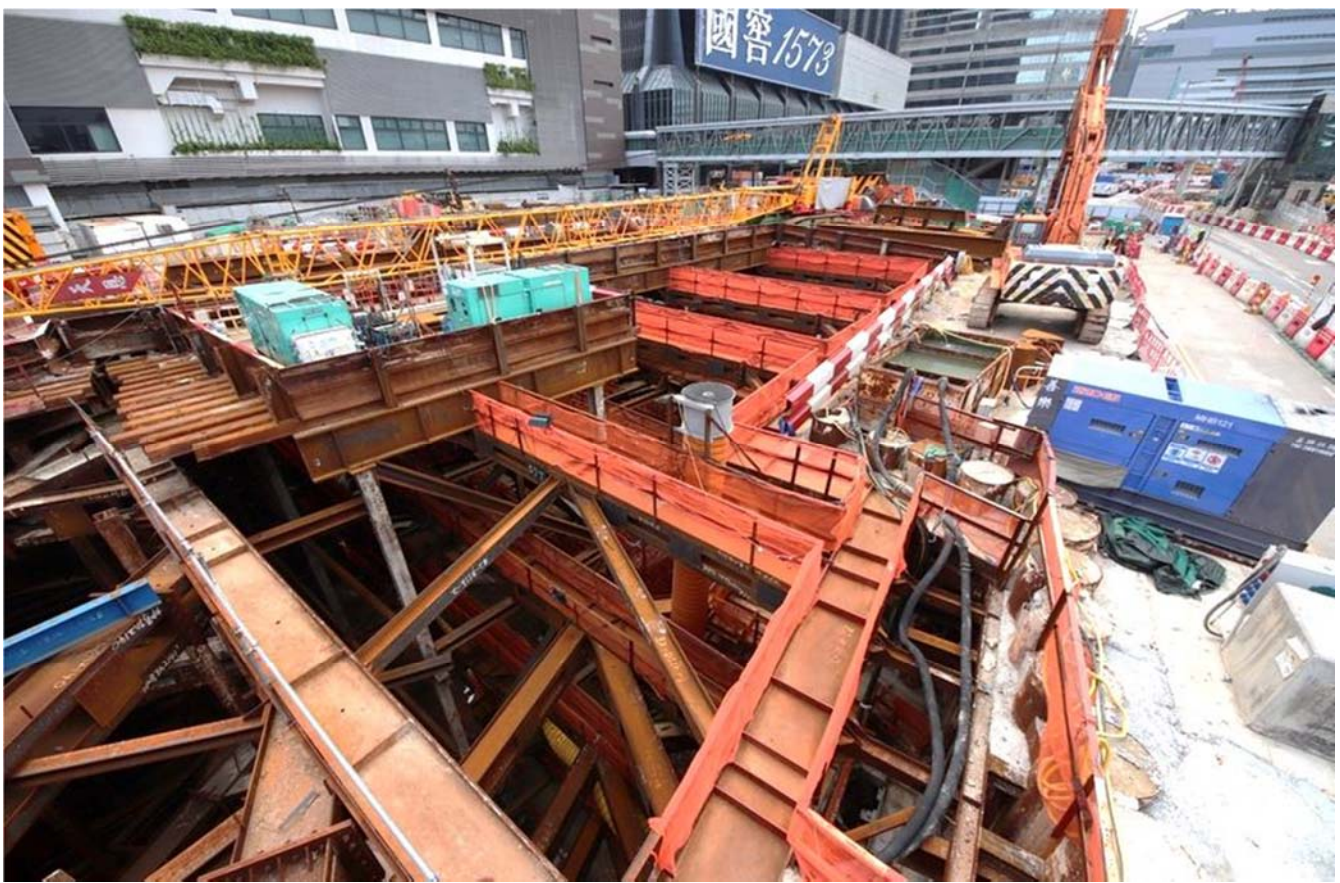




Overview of the Exhibition Station (July 2018, from HKCEC)



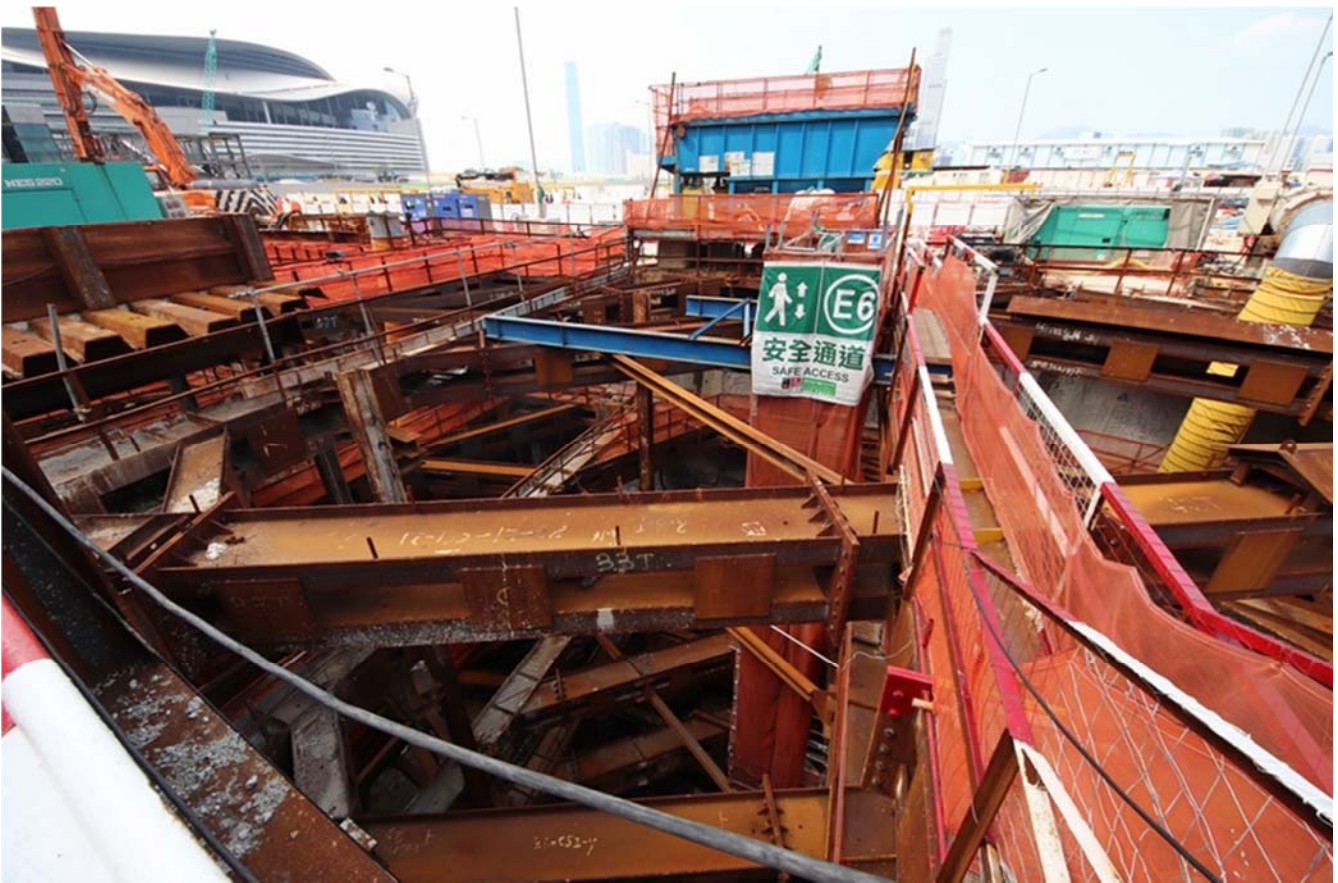
Site/Work setting up for the Western portion of the Exhibition Station constructed using cut-and-cover approach with a covered work deck



Site/Work setting up for the Eastern portion of the Exhibition Station constructed using cut-and-cover approach



Site/Work setting up for the Eastern portion of the Exhibition Station constructed using cut-and-cover approach

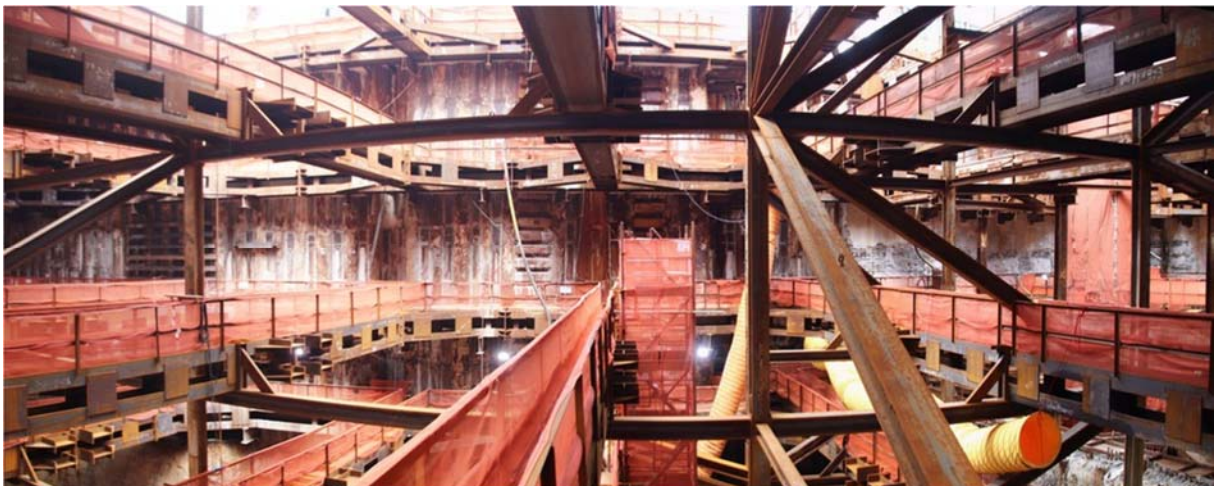
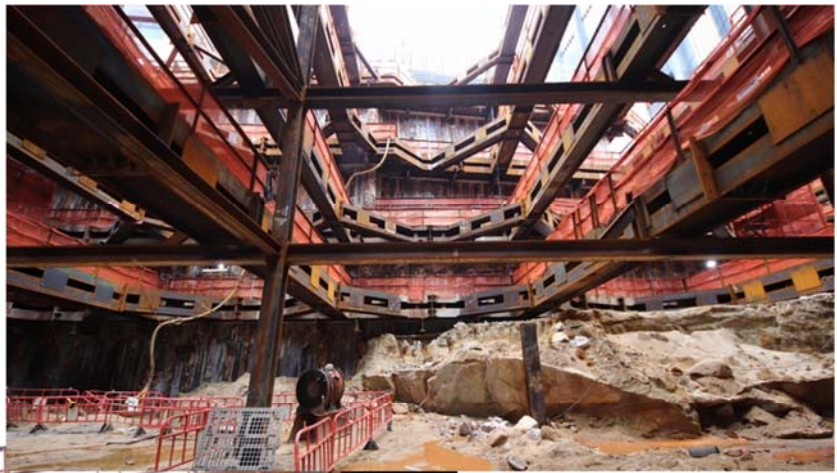


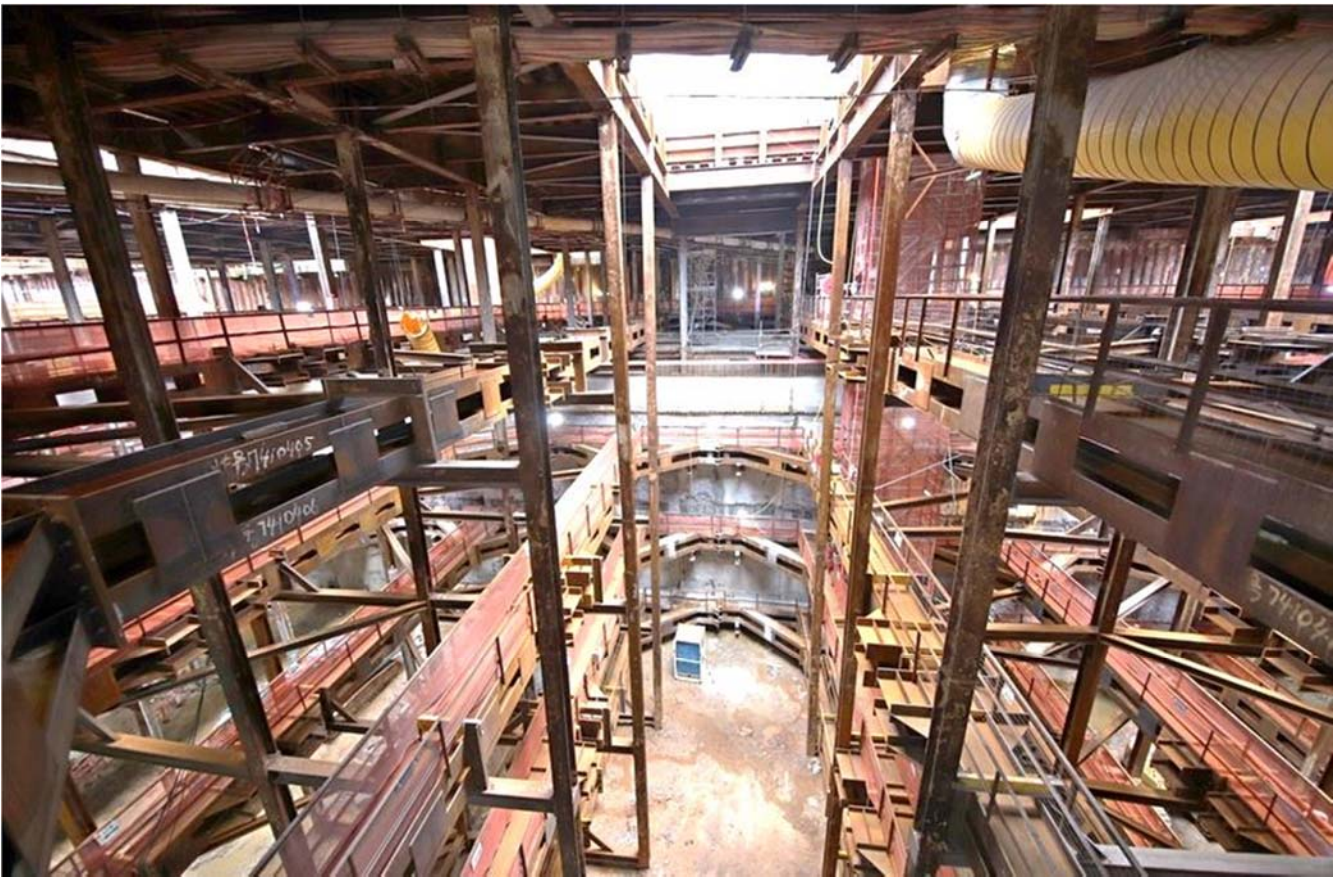
An access void provided within the ELS framework with a safe access stairway for workers



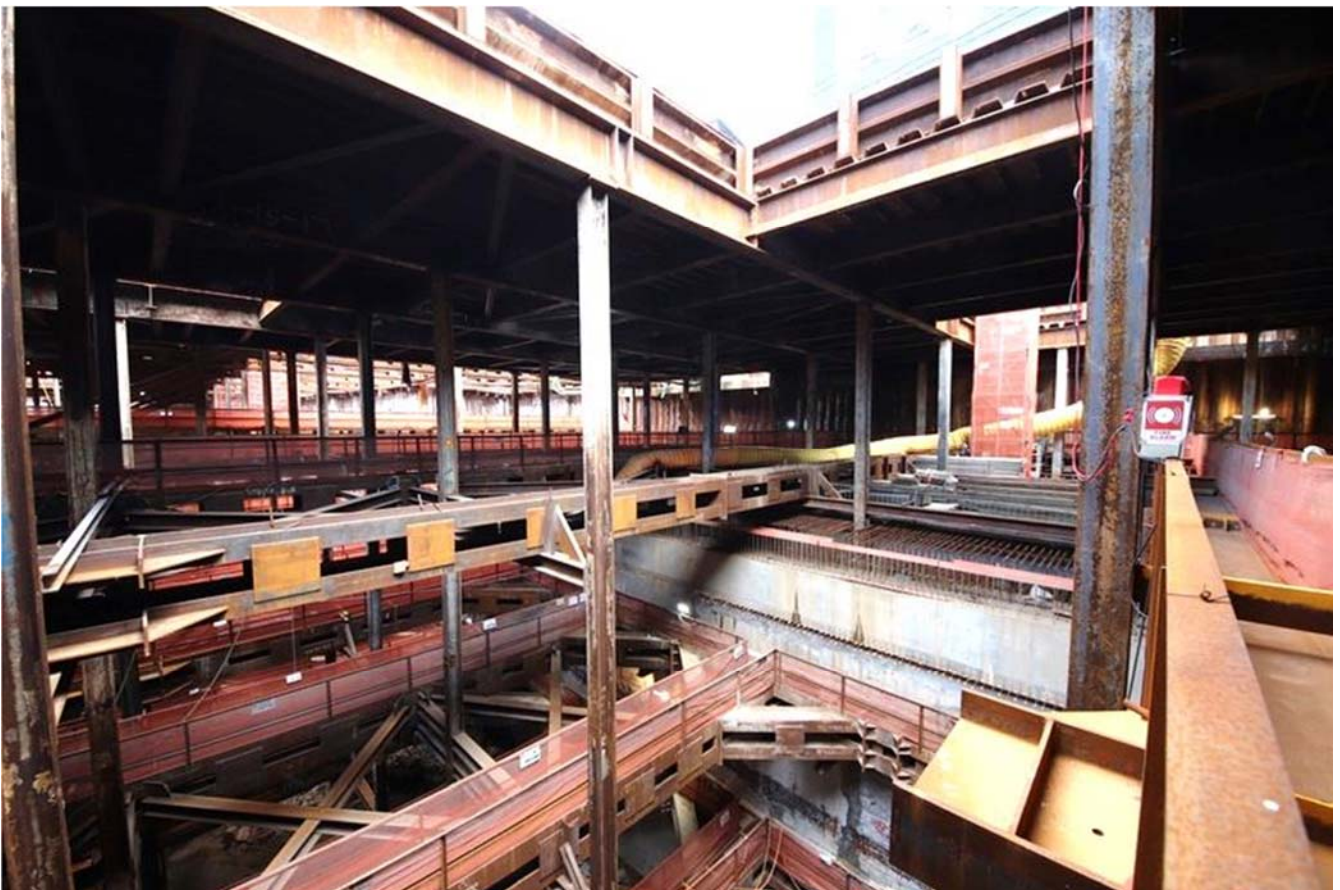
Views inside the excavation pit (eastern portion of station)

Views inside the
excavation pit (eastern
portion of station)





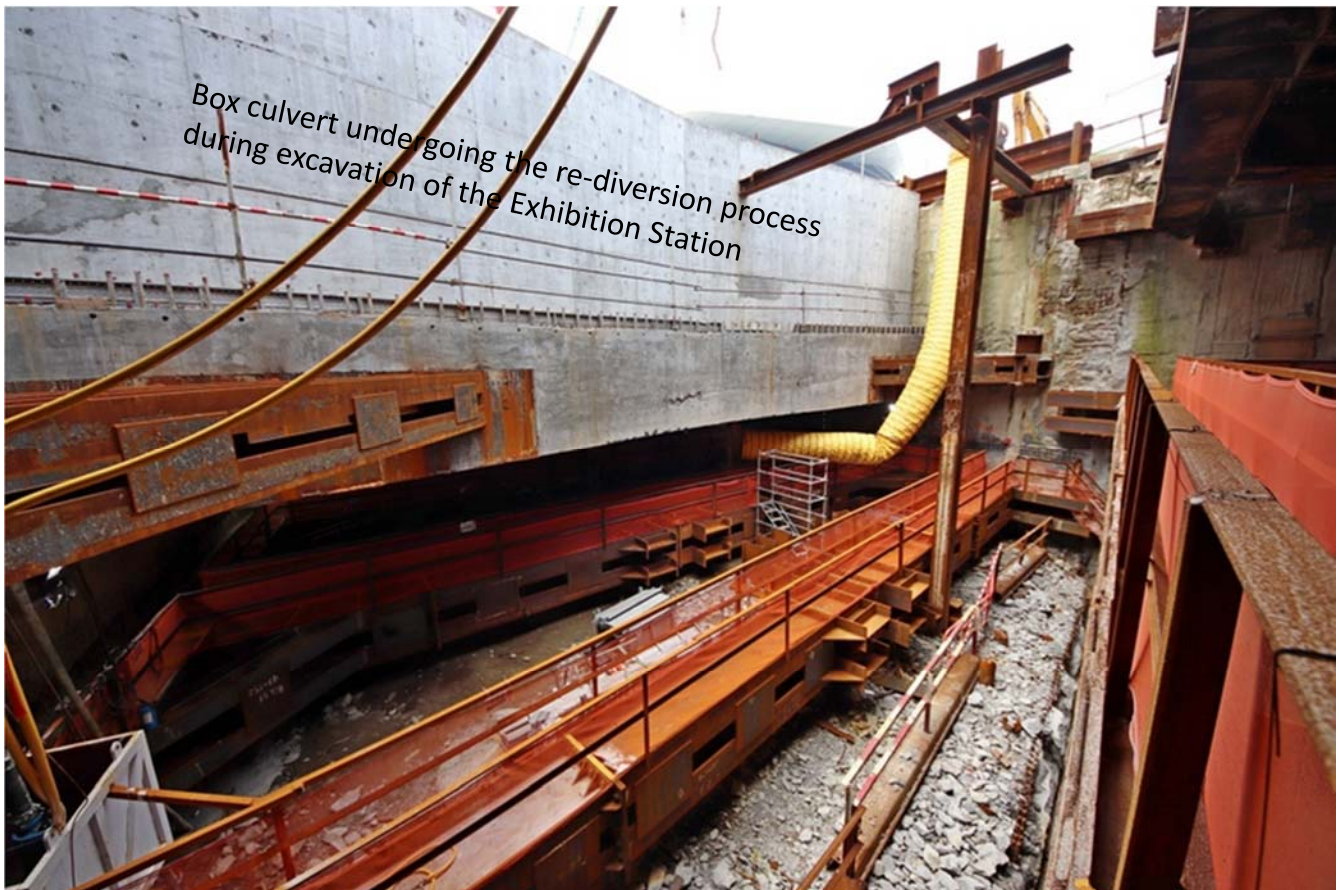
View inside the excavation pit (centre/western portion of station)



View inside the excavation pit (centre/western portion of station)



View inside the excavation pit (centre/western portion of station, the work platform on top)



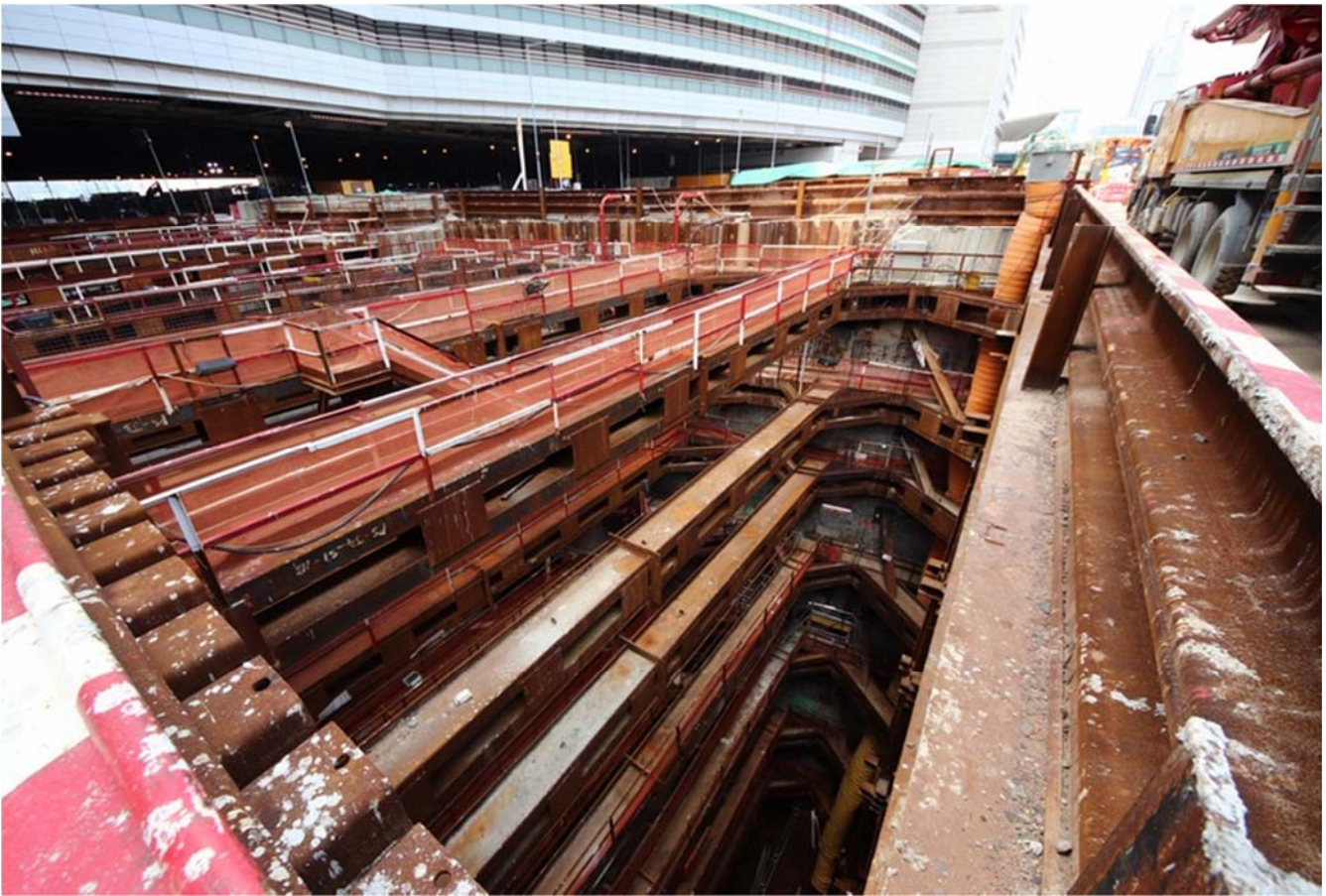
A re-diverted box culvert located on the western end of the station



The re-division of the box culvert as seen from the ground level



The re-division of the box culvert as seen from the an elevated level



Station joining to the approach tunnel running underneath the HKCEC

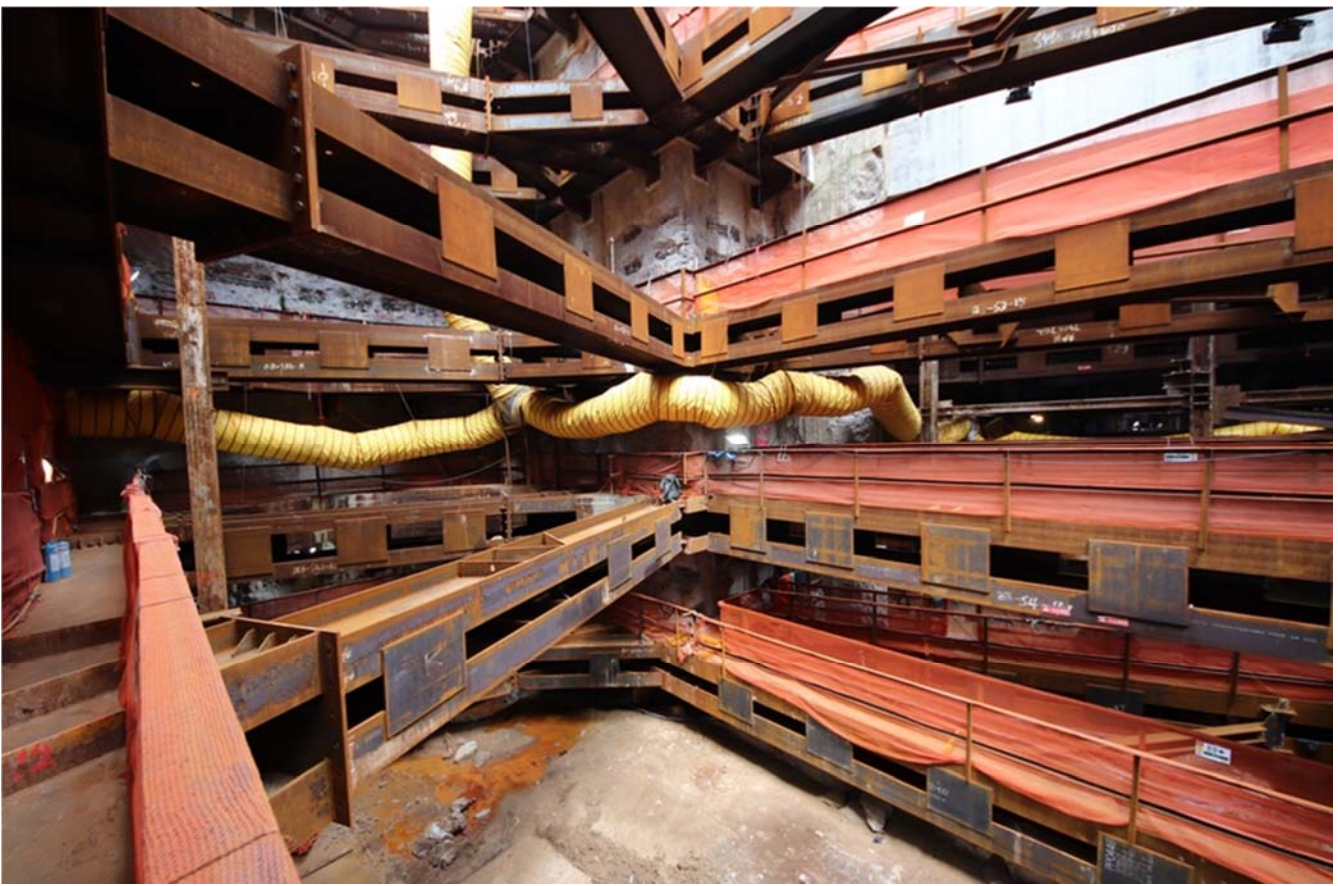
Final saying by Raymond Wong about the project:

Forget about all the political sensitivities, the capacity of HK's engineering profession should have no doubt to take an unreplaceable role in developing Hong Kong.

Though there are countless noises from the politicians about the Shatin-Central Link projects, from the photos that can be seen here anyone base on a fair and reasonable sense cannot deny that all the works are done meeting the world class standard both in term of work design, setting up, tidiness and safety.

Besides, all these works are facing a highly dynamic work environment, there are alternatives to get thing done in a more efficient, economic and fitting the as-constructed situation under the engineering/contractor judgement. Finding scars does not have any meaning in engineering works under such scale.

The slide and photo in the following slide can explain a lot to support this view.



Typical view seeing the detail and complication of the ELS system. The site in general is efficiently designed, tidy and safe that well reflected a precise engineer-mind behind.

The photos as shown in this set of visual report may have certain sensitivity under the current political atmosphere of Hong Kong. However, this is part of Hong Kong achievement and history. Someone needs to document it and passes it on to the community and fore-coming generations.

Raymond Wong serves as an independent researcher, is trying very hard to take up this role.

Hoping that friends of Raymond Wong, his audiences and the community can understand the true genuine hearts of him.

End of presentation