

CPD talk for Building Division, HKIE

Title of Talk

“Experience Sharing on Construction Technology and Practices in Mainland China”, Part 1

By Raymond Wong Wai-man
Independent Researcher,
Lecturer,
City University of Hong Kong
19 November 2018

Modern buildings are often getting more complex in design both in terms of geometrical form, shape, spatial layout and size in order to fit the expectation of the investors, designers and users. How to construct these structures is a great challenge to be faced by engineers and contractors.

In this seminar the speaker tries to highlight some eye-catching examples of modern buildings in Hong Kong and China with such mentioned features. The technology and work set-up to construct these buildings will be a focus to illustrate in the talk.

Common features of large & complex building projects:

- With quite a large site area (say, at least 10000m² in size)
- Located within complicate work environment/neighborhood (e.g. within congested urban area, with complicated underground facility nearby, close to slope or even waters)
- super high-rise construction
- Incorporating with special structures (e.g. long-span, high-headroom, heavy elements, deep basement and complicated underground works)
- Complicated geometry (e.g. irregular shaped, multi-levels, inclined and curved structures, broken layout/spatial layout)
- Incorporate large amount of IT, energy-saving, green and environment-friendly design.

Representing building projects in China of large and complex nature:

1. International Finance Centre, Guangzhou
2. Chow Tai Fook Finance Centre, Guangzhou
3. Taikoo Hui, Guangzhou
4. Development of the World Expo facilities, Shanghai
5. White Magnolia Plaza, Shanghai

Making use of a series of photos taken at mile-stone stages, the speaker try to give audiences in this seminar an overview of how these projects were being delivered including some major features some-when dating almost back to Day 1 of the construction process.

Brief Highlight of the International Finance Centre Project, Guangzhou

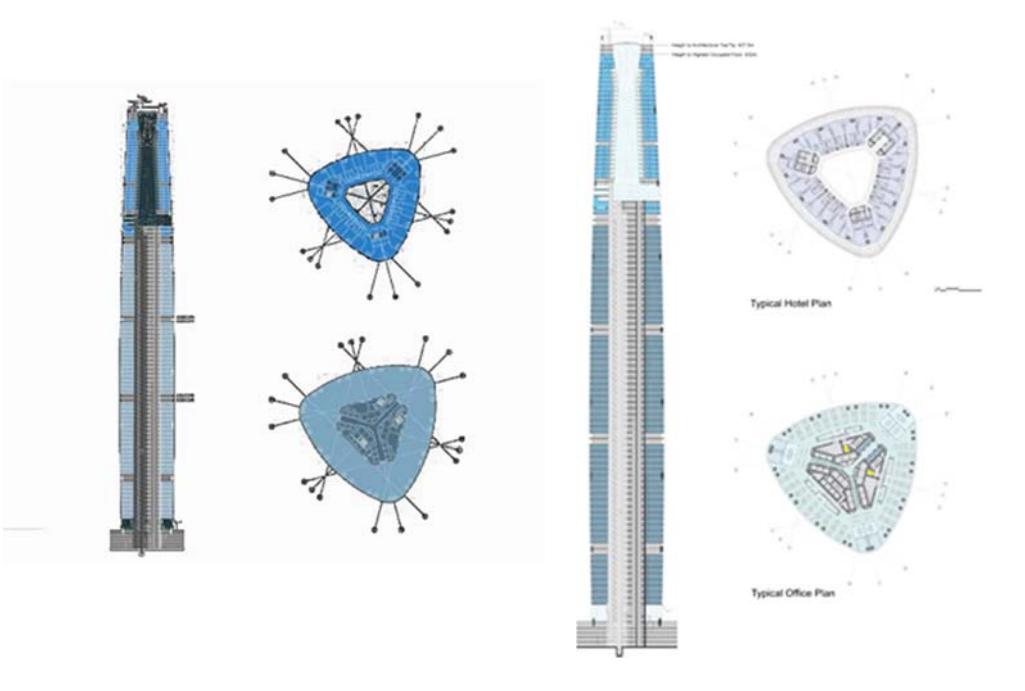
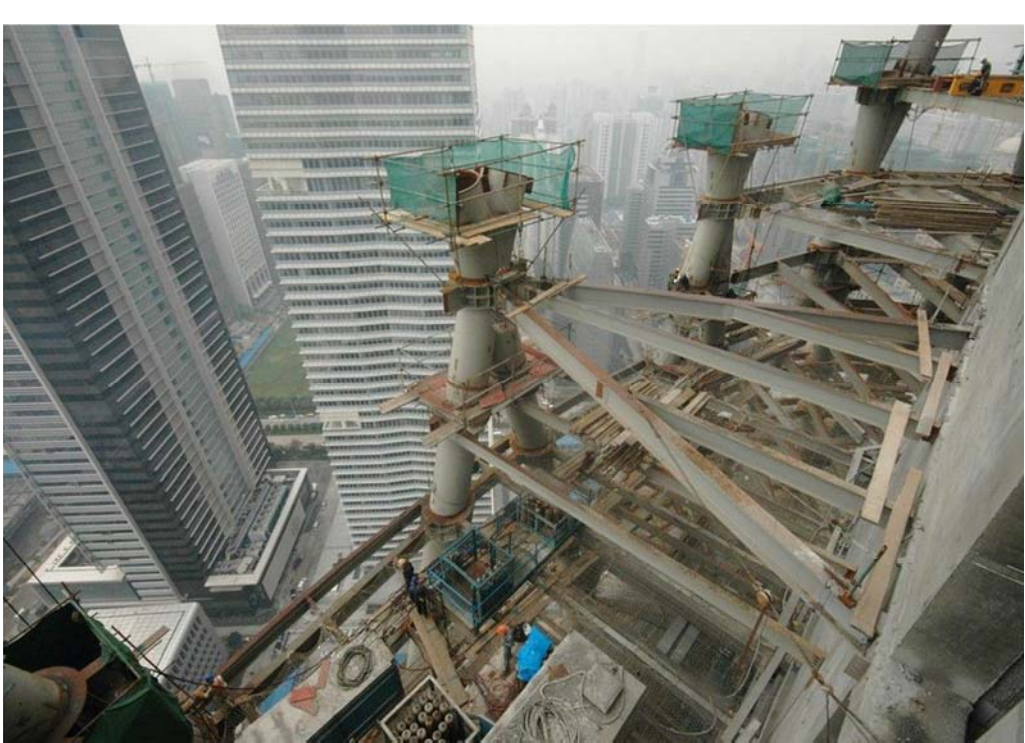


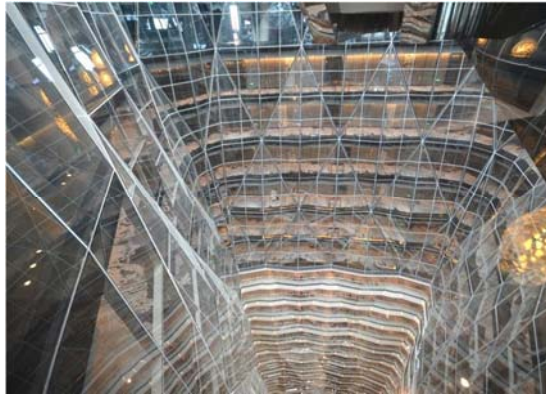
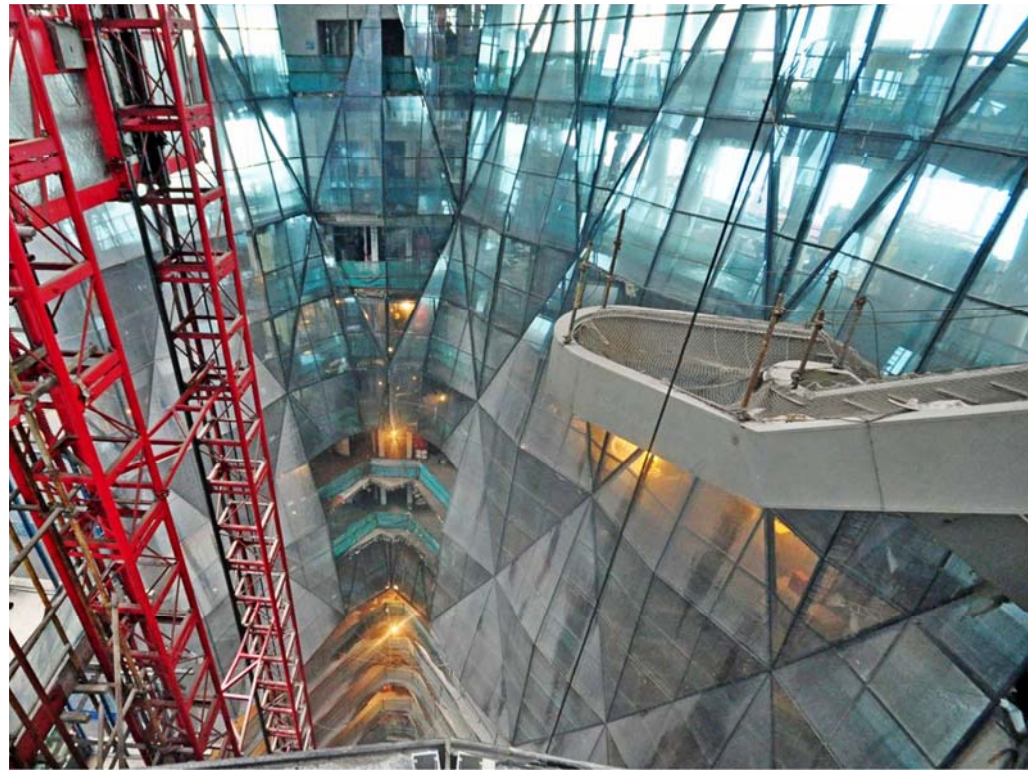
The new city axis in front of the IFC,
Guangzhou











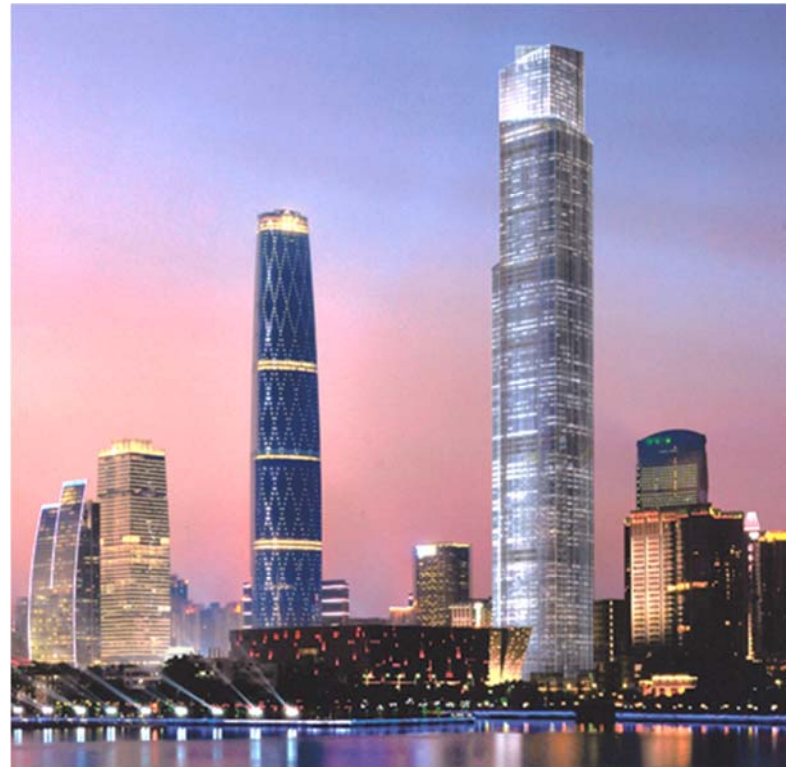
November 2008

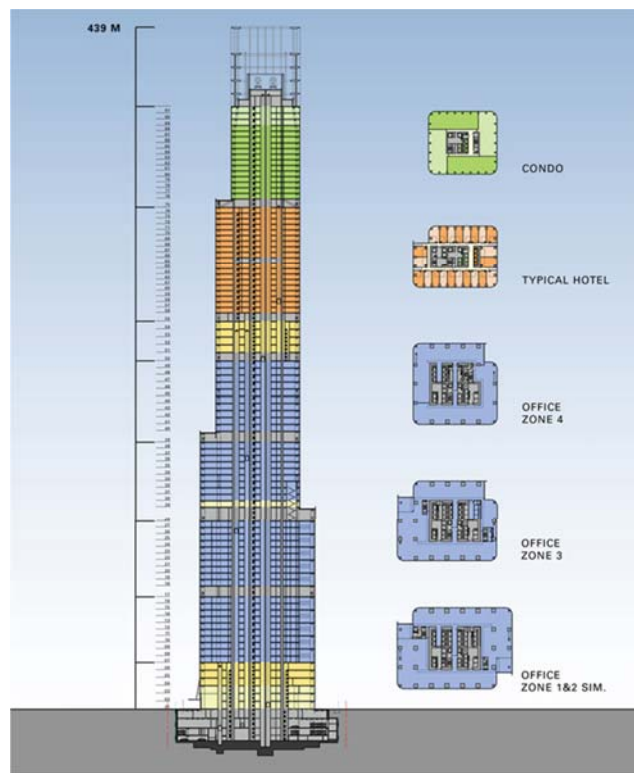


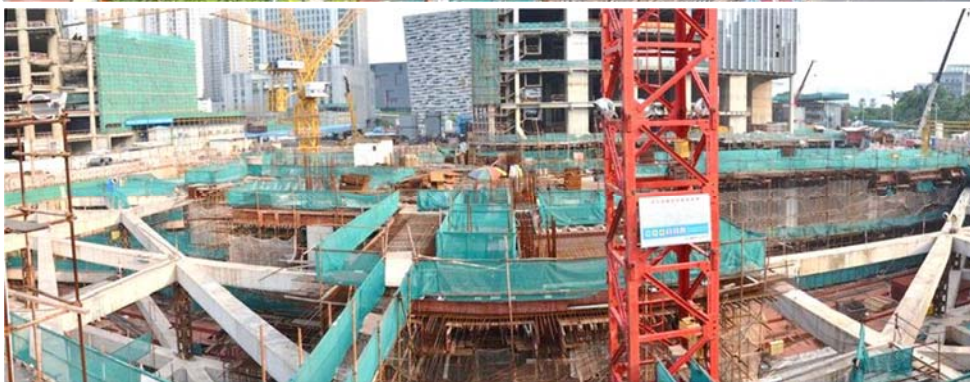
February 2009



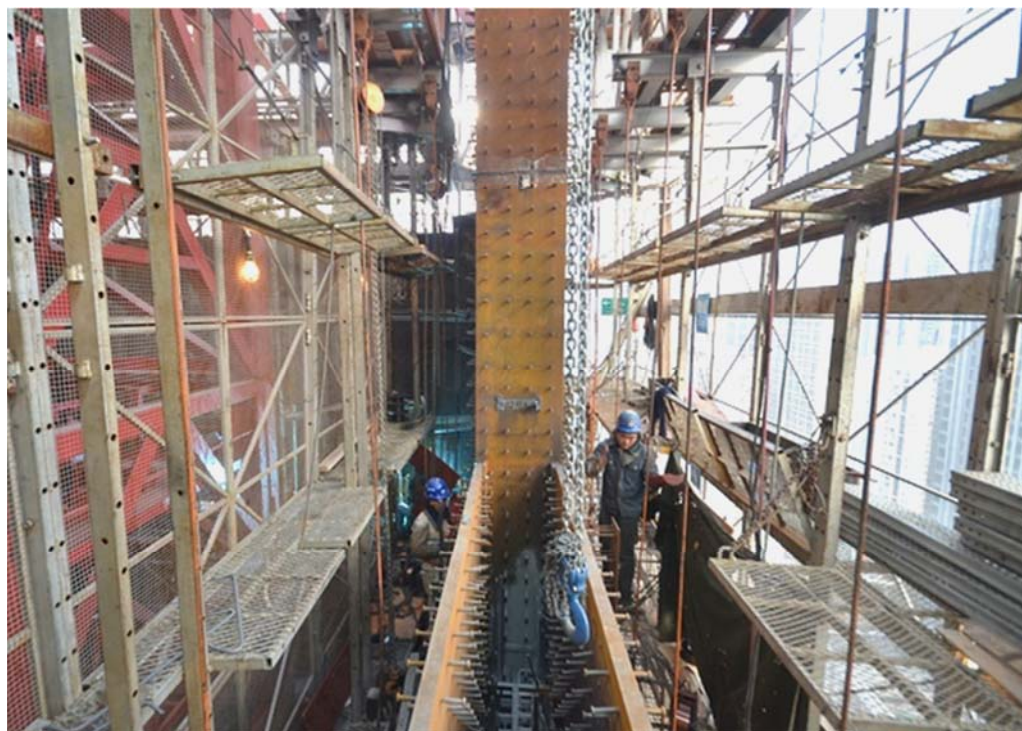
Brief Highlight of the Chow Tai
Fook Finance Centre Project,
Guangzhou













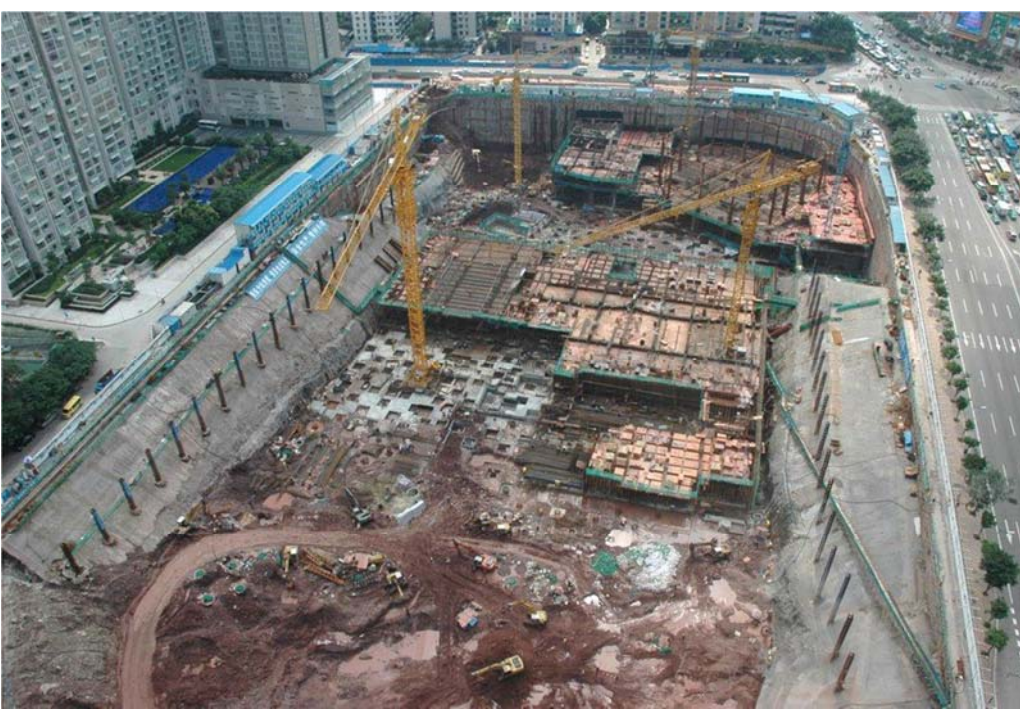


Brief Highlight of the Taikoo Hui Project, Guangzhou

January 2008





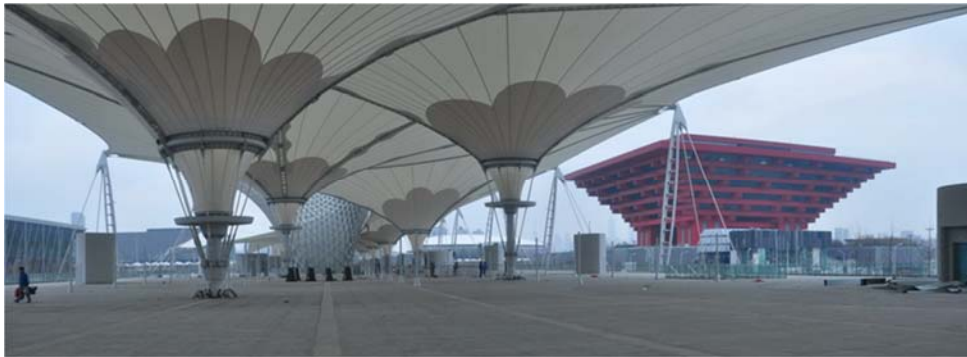




Brief Highlight of the Development of the World Expo facilities, Shanghai



Overview of Expo Zone A between late 2008 – early 2010



The Expo Boulevard, the main entrance to Expo venue in Zone A



Overview of Expo Zone D and E on Puxi in late 2008



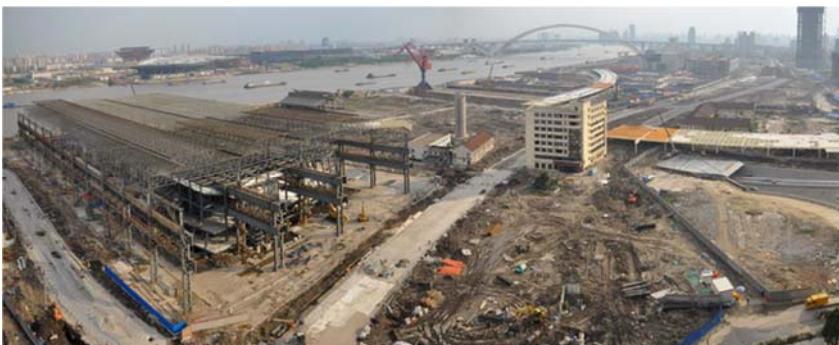
Overview of Expo Zone D and E on Puxi in early 2009



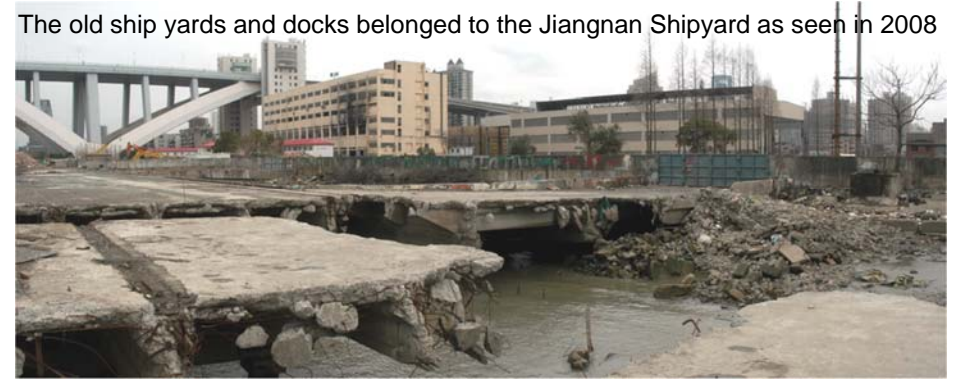
Overview of Expo Zone D and E in early 2010



The same area one year before



The old ship yards and docks belonged to the Jiangnan Shipyard as seen in 2008





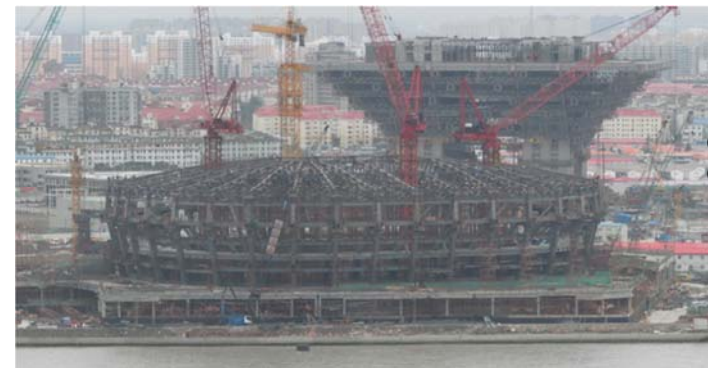
Decommissioning the site and preserved some of the old workshops as special themed pavilions in the Puxi area



Construction of the China Pavilion

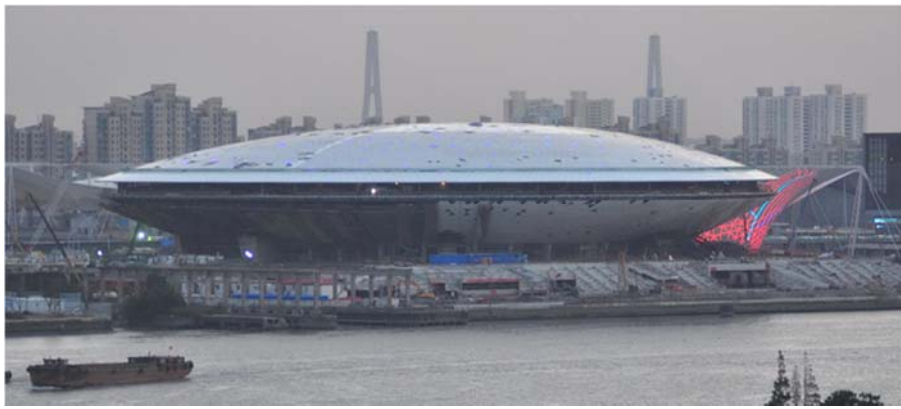


Final finishing of the China Pavilion

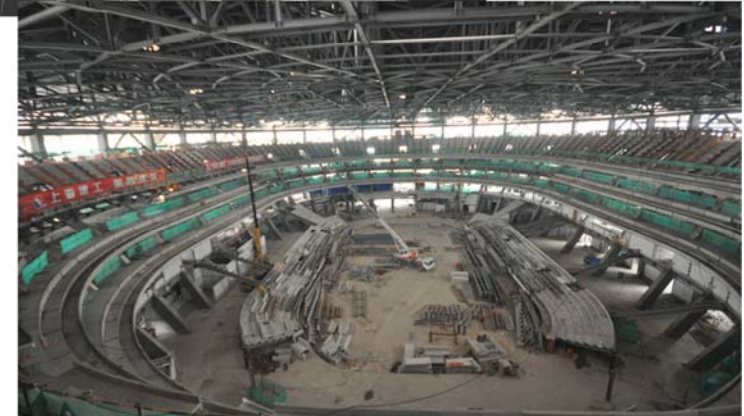


Construction of the Culture Centre





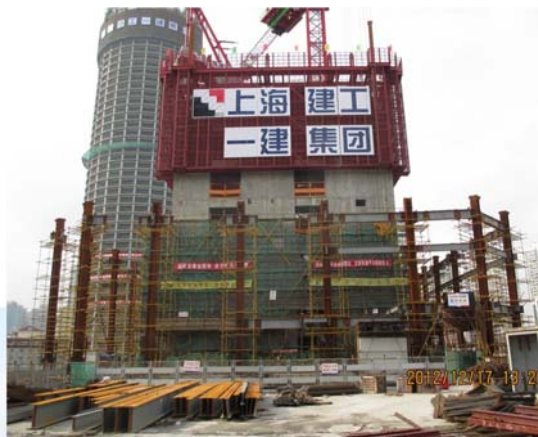
Construction of the Culture Centre



Brief Highlight of the Development of
the White Magnolia Plaza, Shanghai















End of the 1st part of presentation
about China project cases