

CPD talk for Building Division, HKIE

Title of Talk

“Experience Sharing on Construction Technology
and Practices in Mainland China”, Part 2

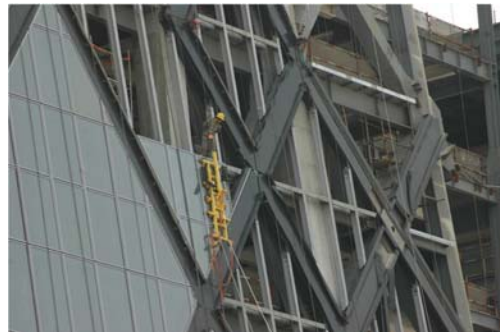
By Raymond Wong Wai-man
Independent Researcher,
Lecturer,
City University of Hong Kong
19 November 2018

Project Cases in Beijing











Shanghai Tower

Shanghai Tower under construction in 2013





Viewing Pudong from the Bund with
the Shanghai Tower as a focal point



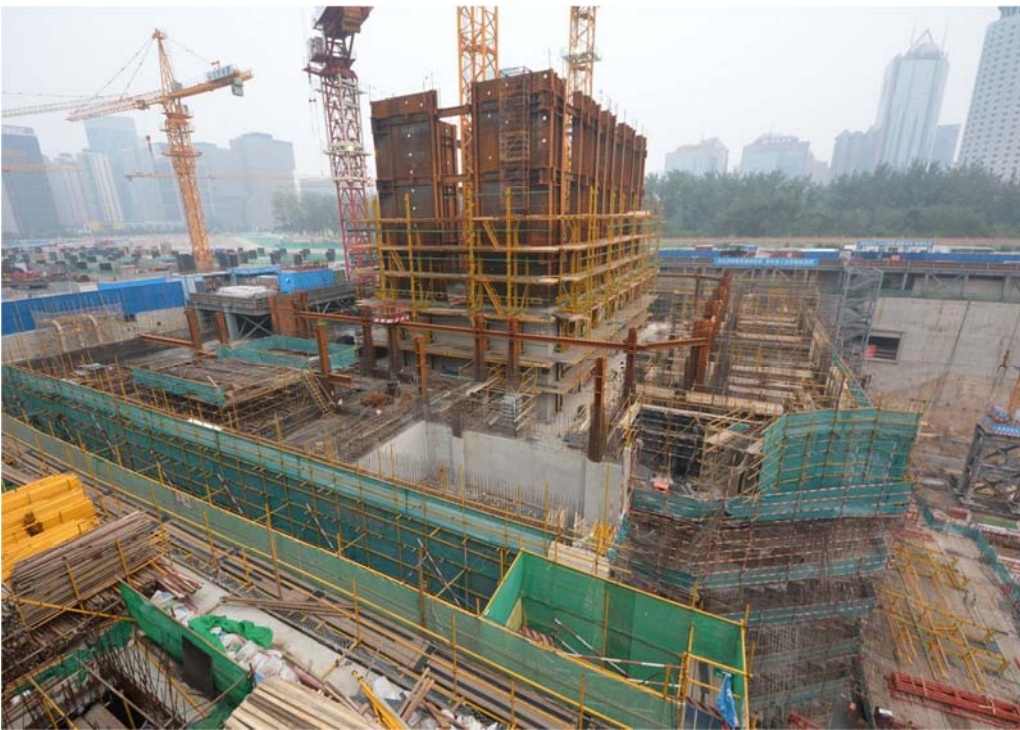
Brief Highlight of the
Samsung Tower project, Beijing



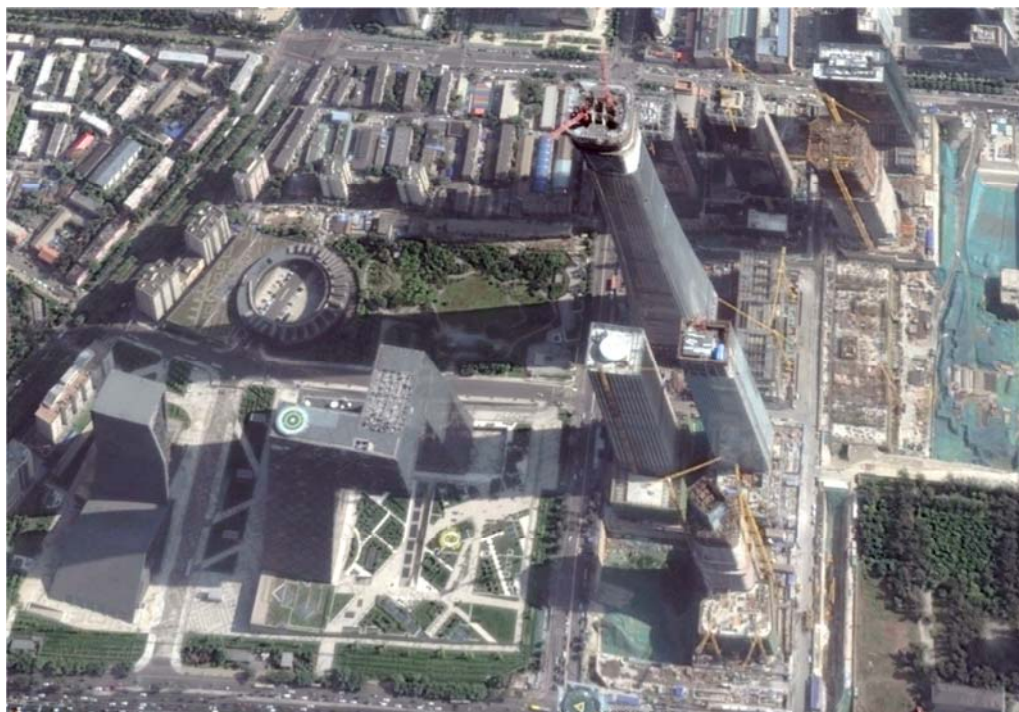








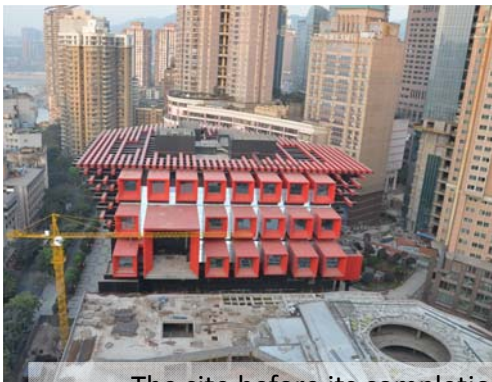




Project Cases in Chongqing



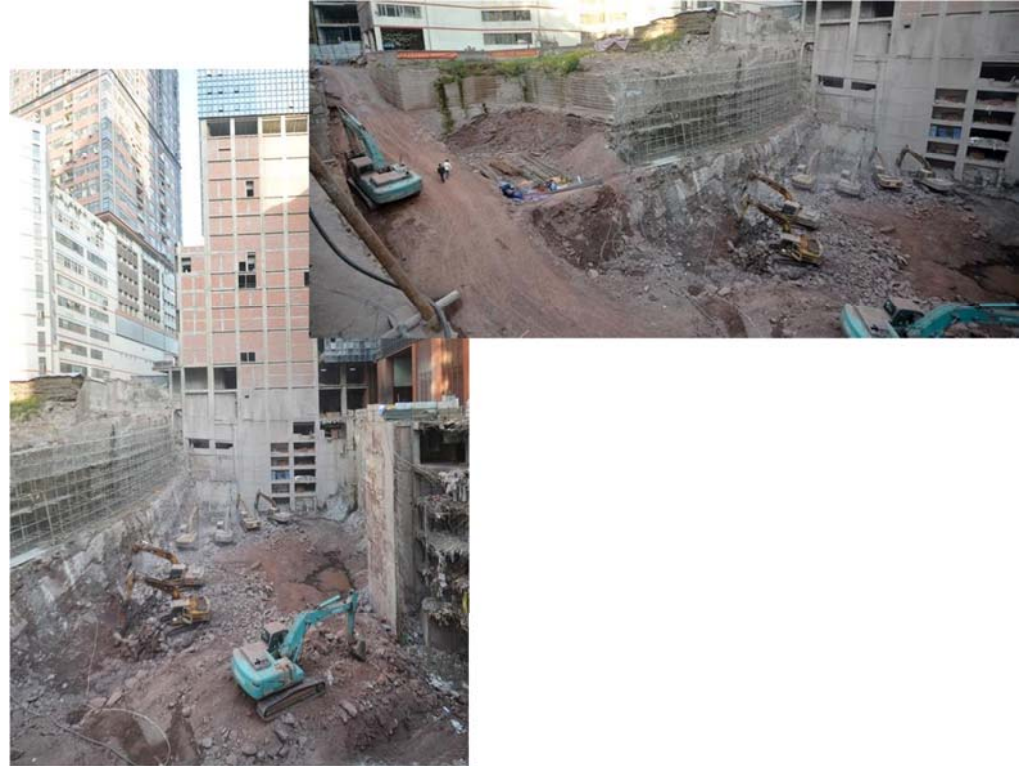




The site before its completion in 2013, Chongqing Art Centre



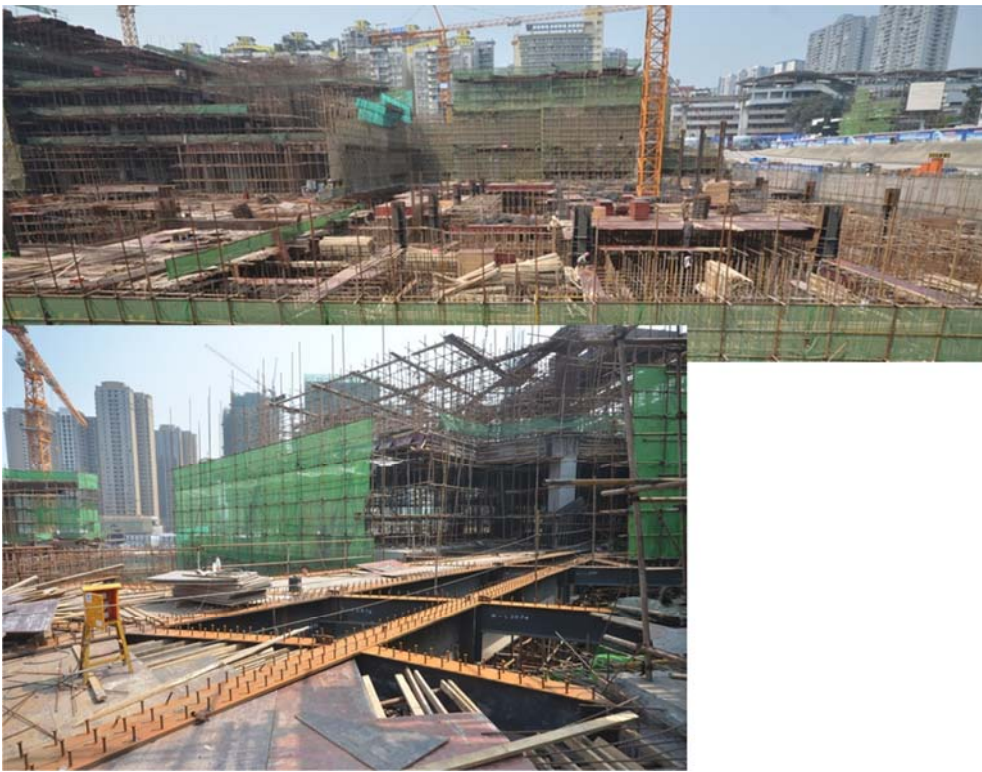






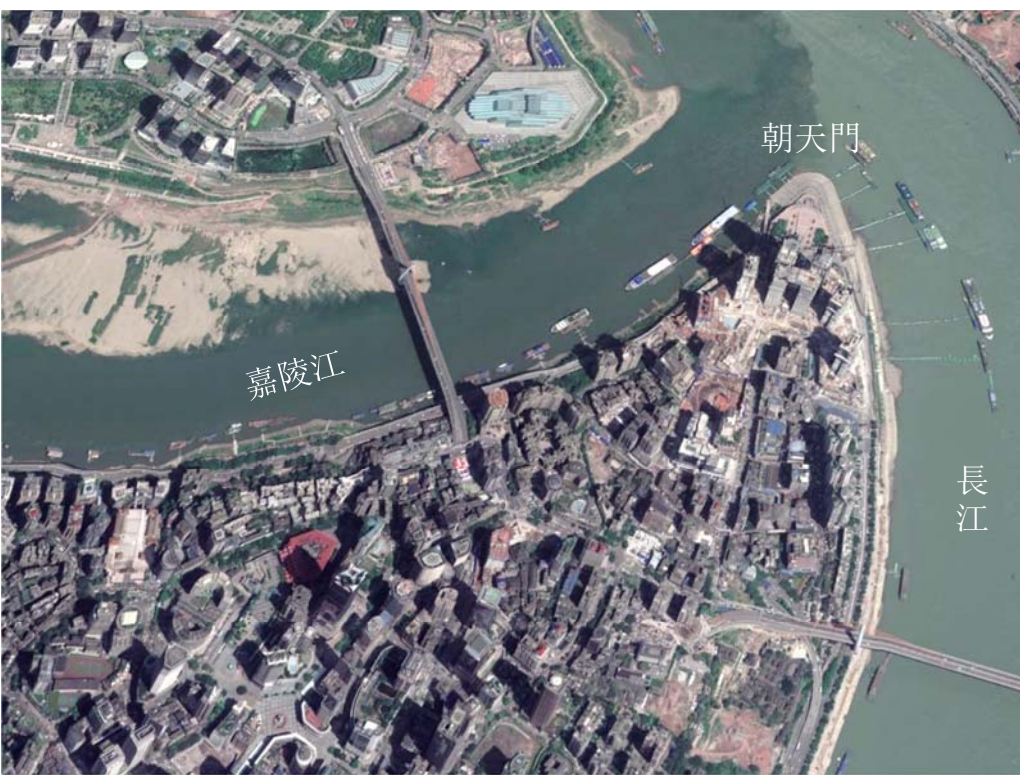






Redevelopment of Chaotianmen – The Raffles City Project







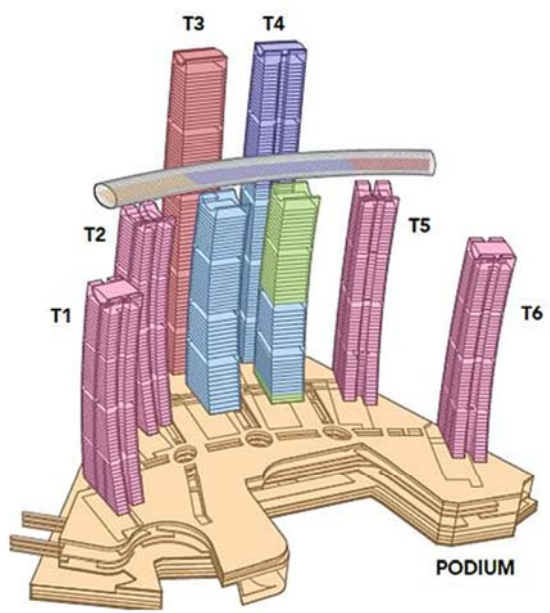






Site Plan

□	Offices
■	Hotels
■	Serviced Residences
■	Homes
■	Shopping Malls





A residential estate for middle classes in 南岸區



A residential estate for middle classes in 南岸區



Other project cases awaiting for development





Infrastructure Development in Chongqing





壯觀的2號線的縣空車站

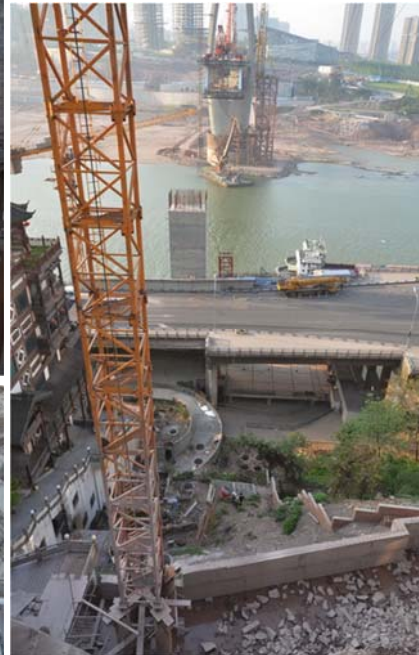
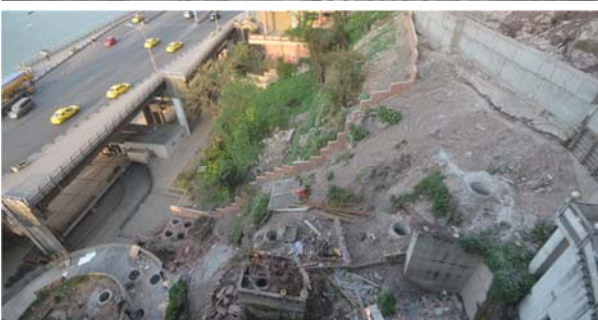




正在興建中的
東水門大橋
(長江)



正在興建中的千厮門大橋 (嘉陵江)

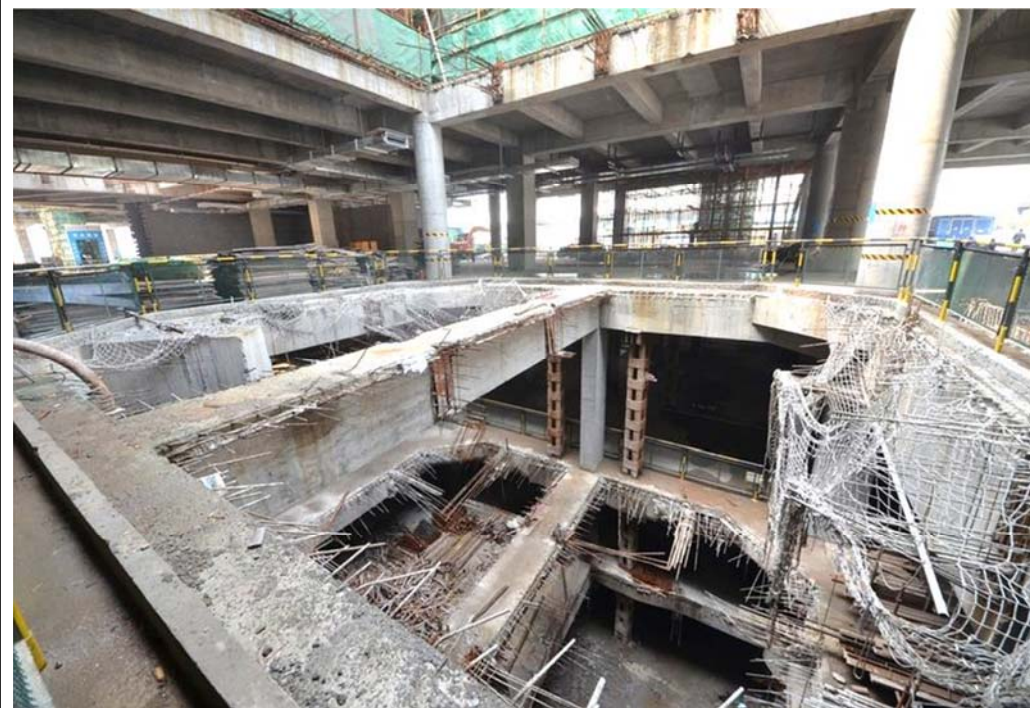


沿長江及嘉陵江邊很多解放初期的舊工廠，土地有待清理或重建



Project Cases in Wuhan









Project Cases in Quiyang











General Site Facilities and Set-up



Take a shower and do some washing-up after a day's work





What is so special about this kind contemporary projects of in China:

1. Super large-size in terms of land and building area
2. Many of them are of super high-rise nature
3. Involving numerous complex work space in complicated geometrical layout
4. Majority are constructed using structural steel
5. Site and work set-up is relatively in proper order and work efficiently.
6. Safety consciousness can be observed

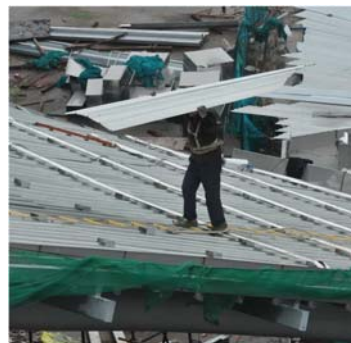
Salute to millions nameless workers who work very hard and dedicate themselves in construction sites to help China's development and advancement



The huge army of construction force



Site delivery team



Site is quite a dirty place





Working inside a battle field?



Clearing the mess after demolition



Working inside ground -
Getting into a hand-dug caisson





Countless harsh working conditions
inside construction site



Site accommodation and staff facility –
the ideal example



A sweet place to rest and stay



Site can be a place to meet the girl friend.



Site can be a sweet home or an exciting playing ground,



Site canteen





Site catering services – delicate and popular snack is provided daily



Community centre at a corner of site



End of this part of presentation