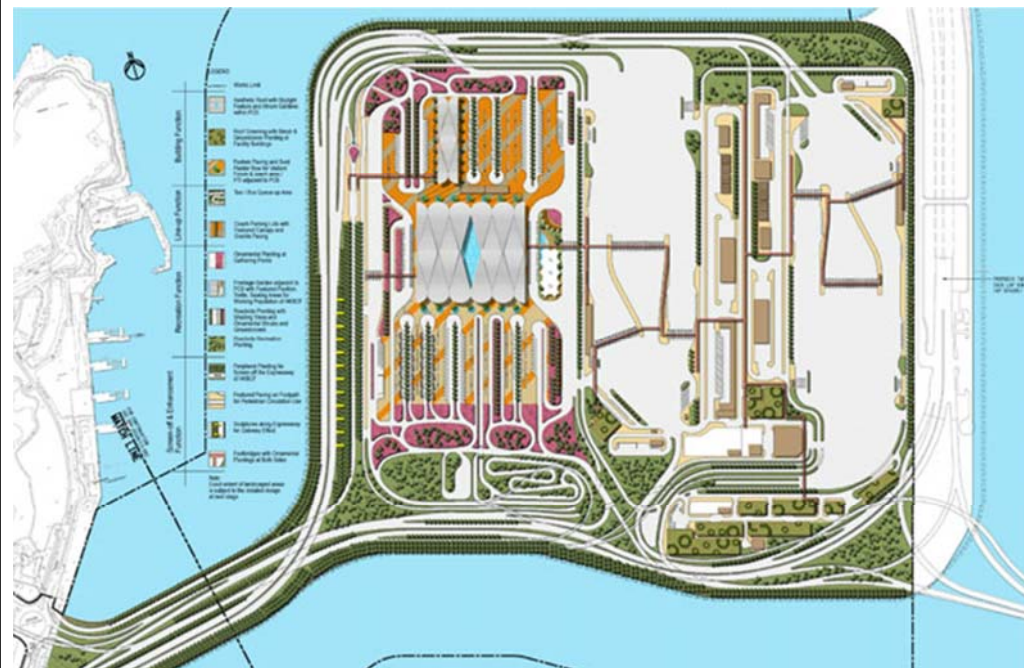


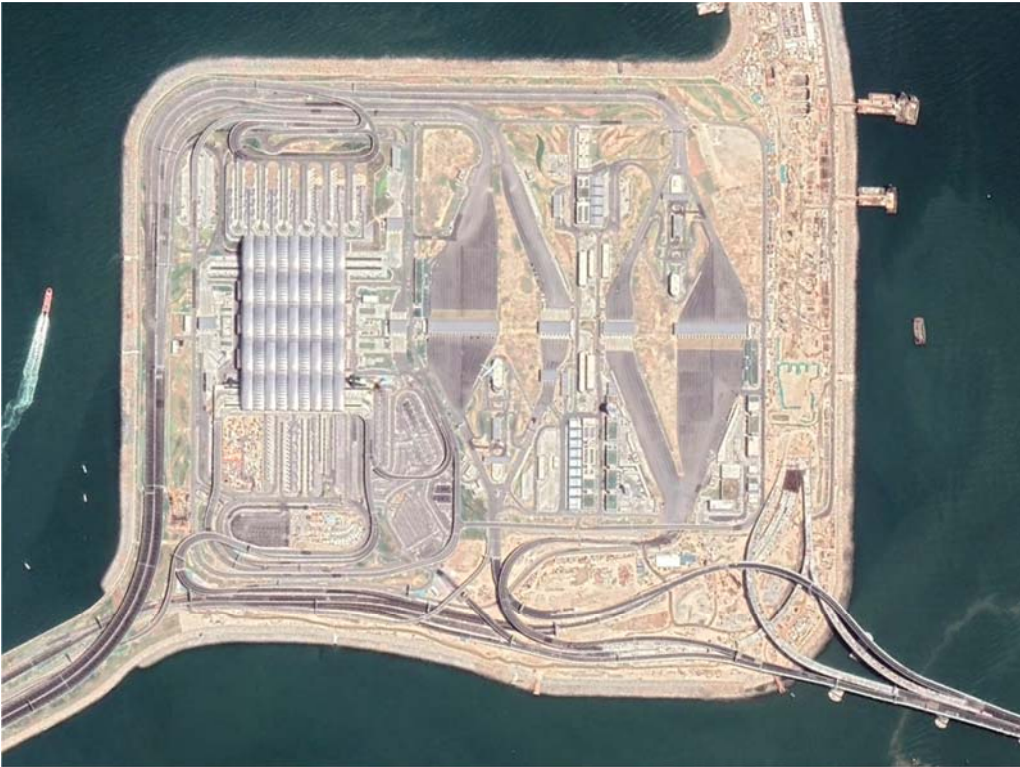
Construction of the HK-Zhuhai-Macao Bridge, Hong Kong Section (Part 2)

Presented by Raymond Wong Wai-man,
Independent Researcher on Infrastructure Development

Presentation material for a seminar organized
by the Civil Division, HKIE
15 December 2018

6. Construction of the Boundary Crossing Facilities





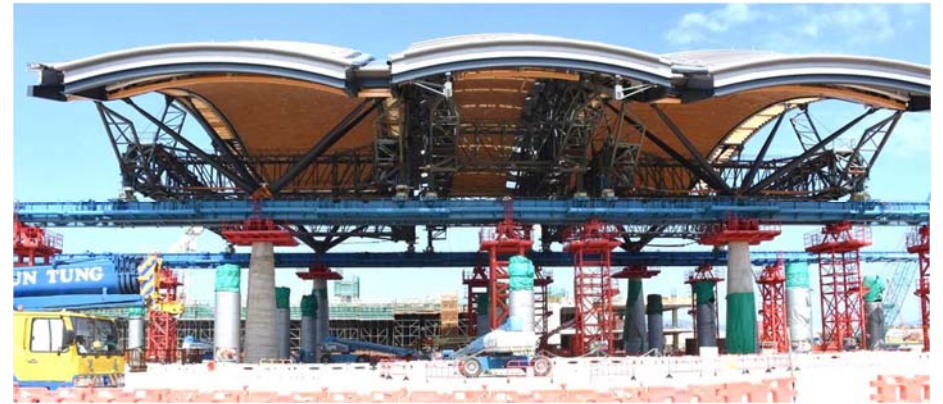
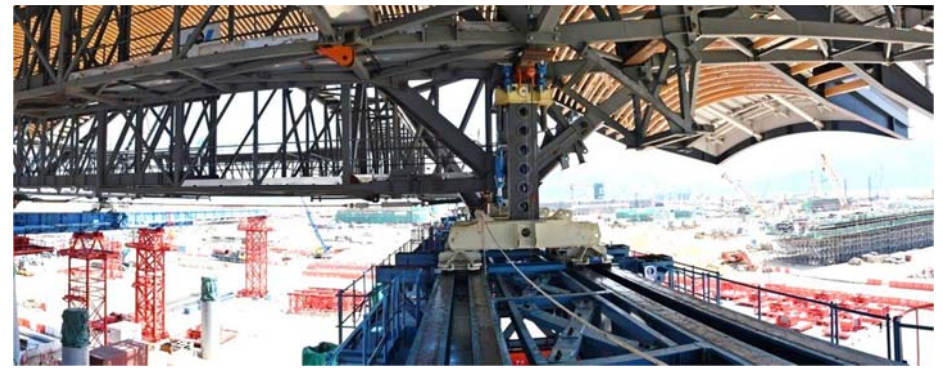
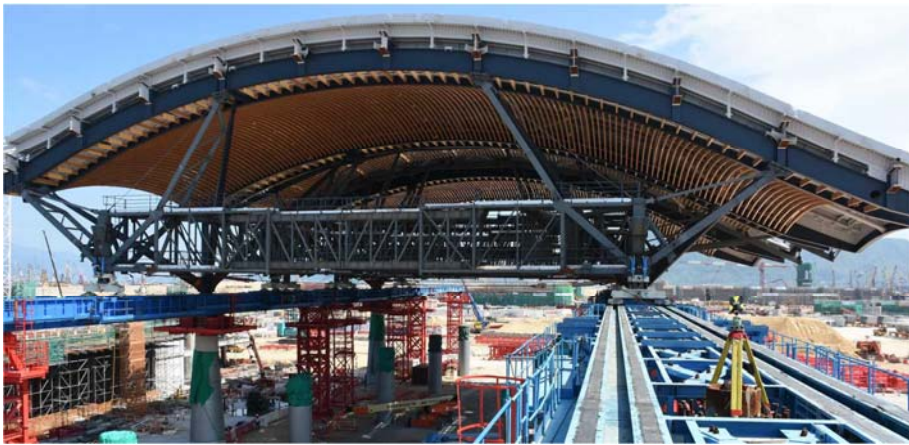


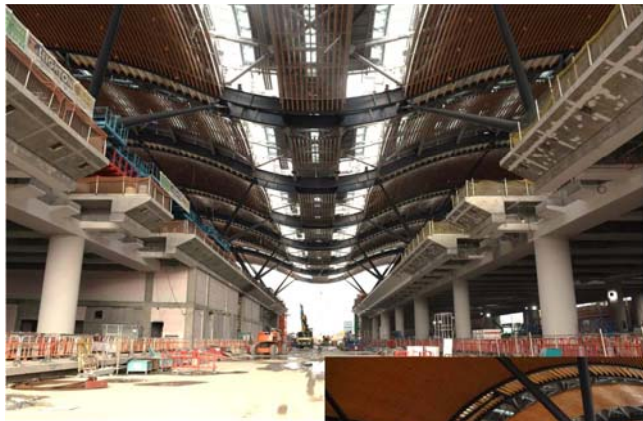
The link road from Chak Lap Kok to the Man-made Island

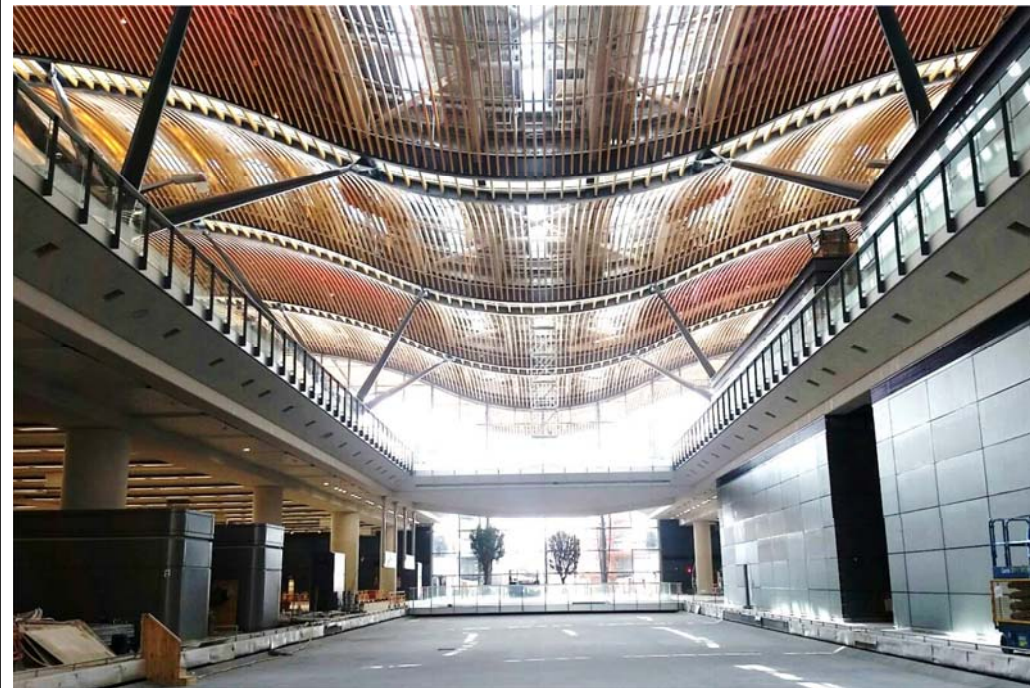
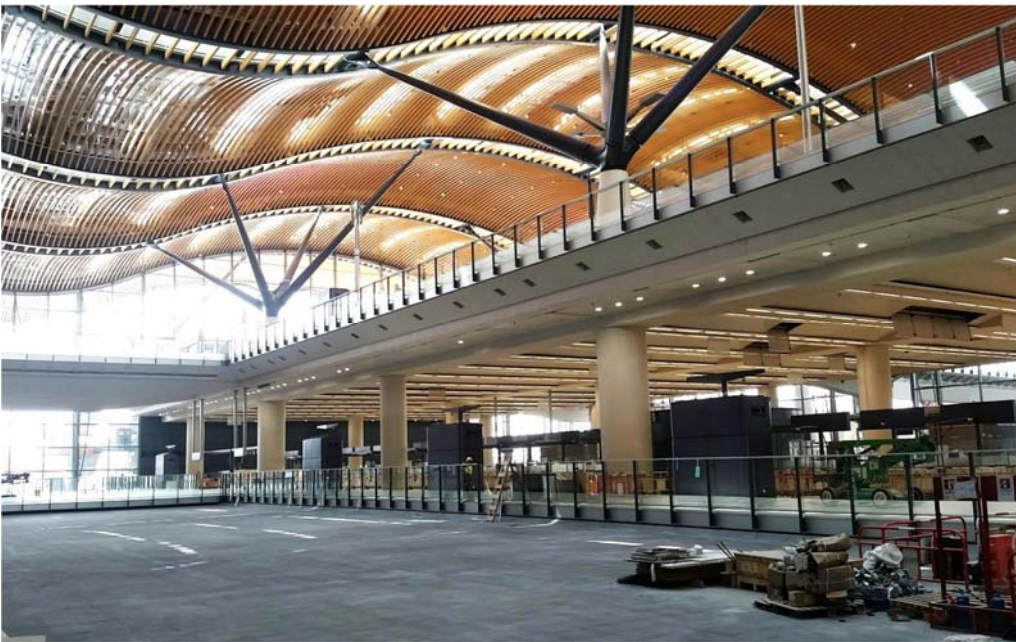
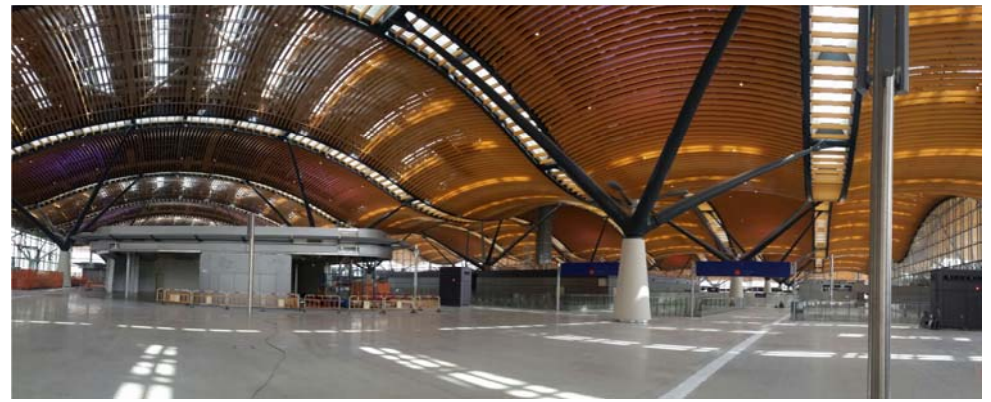


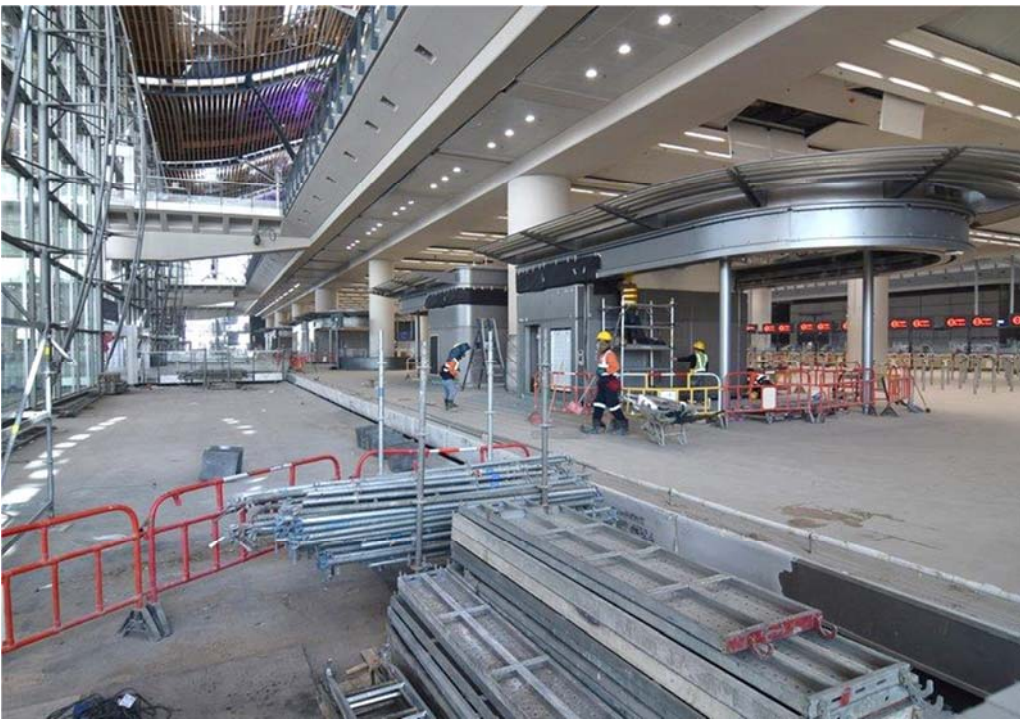
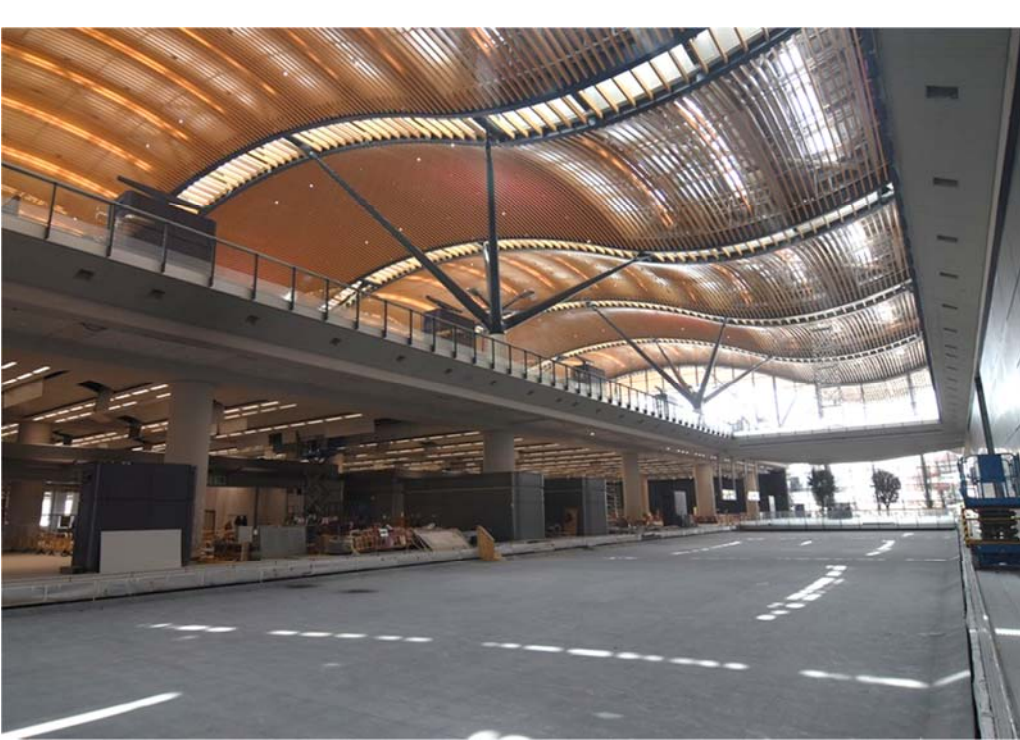




















Roadway linking the Man-made Island and CLK

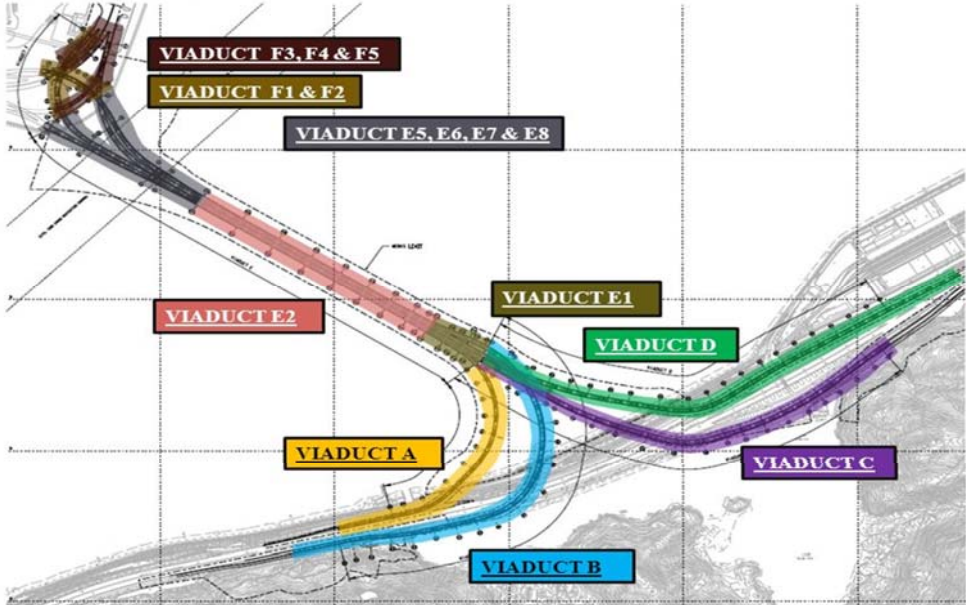


7. Construction of the
Link Road (Tai Ho Junction)





Scope of Works



3











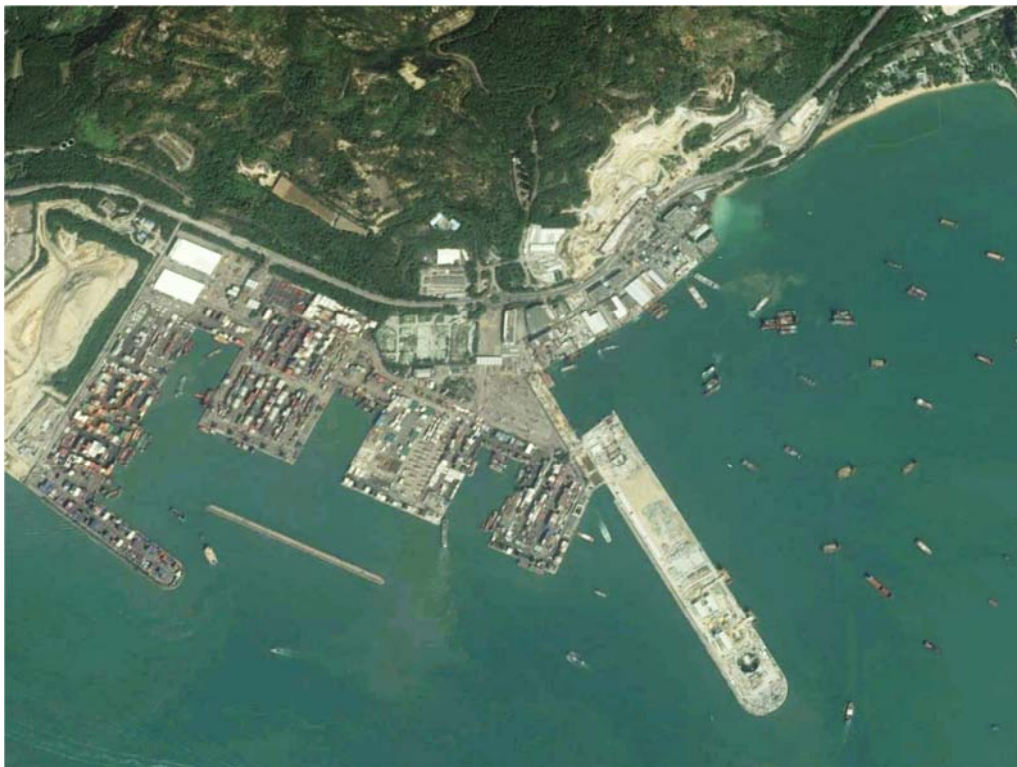
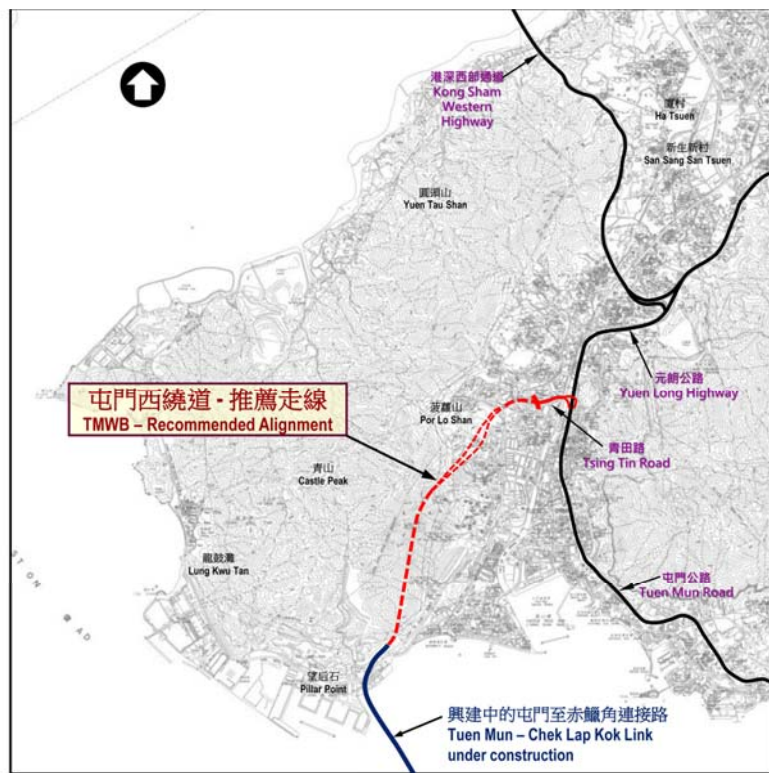
8. Construction of the Link Road
(Junction at Man-made Island)

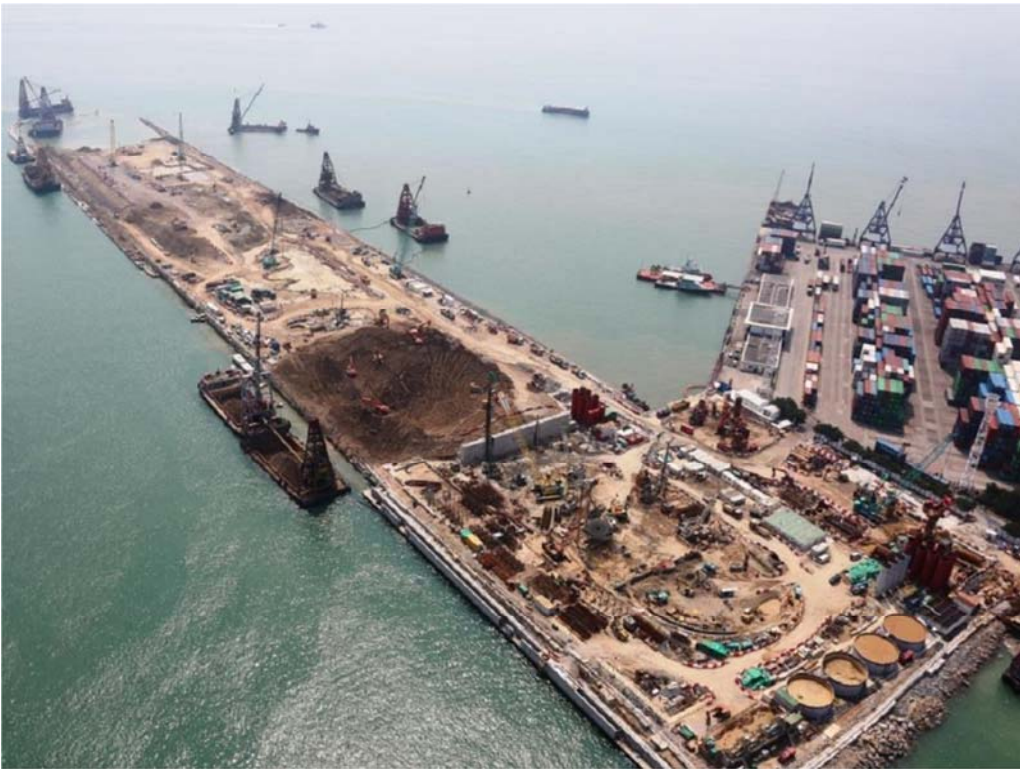






9. Construction of the Tuen Mun-
Chak Lap Kok Link Road
(Junction at Tuen Mun)









HK-Zhuhai-Macao Bridge
(outside HK)









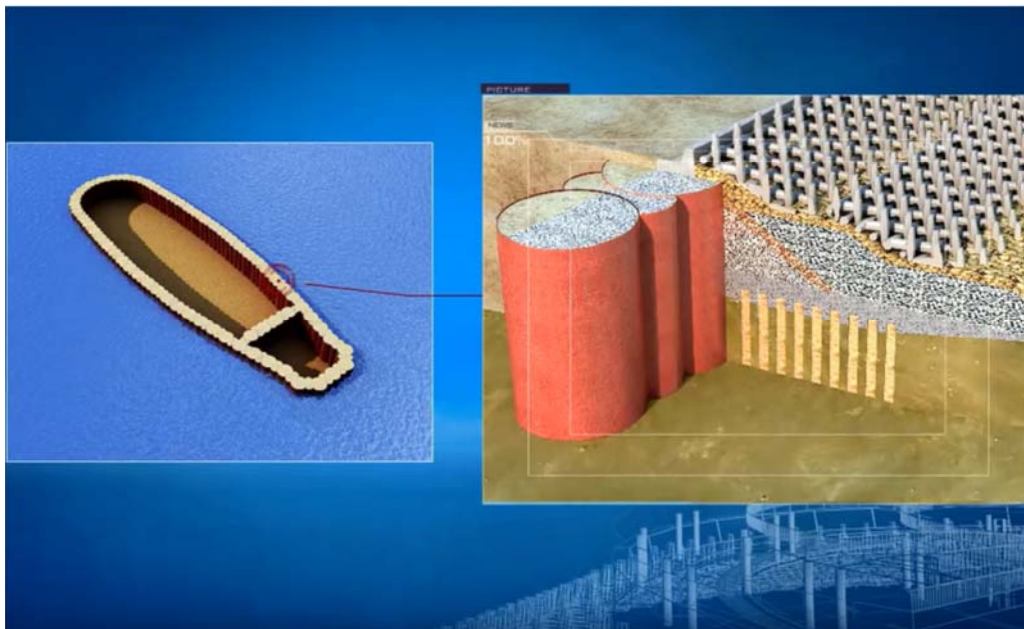




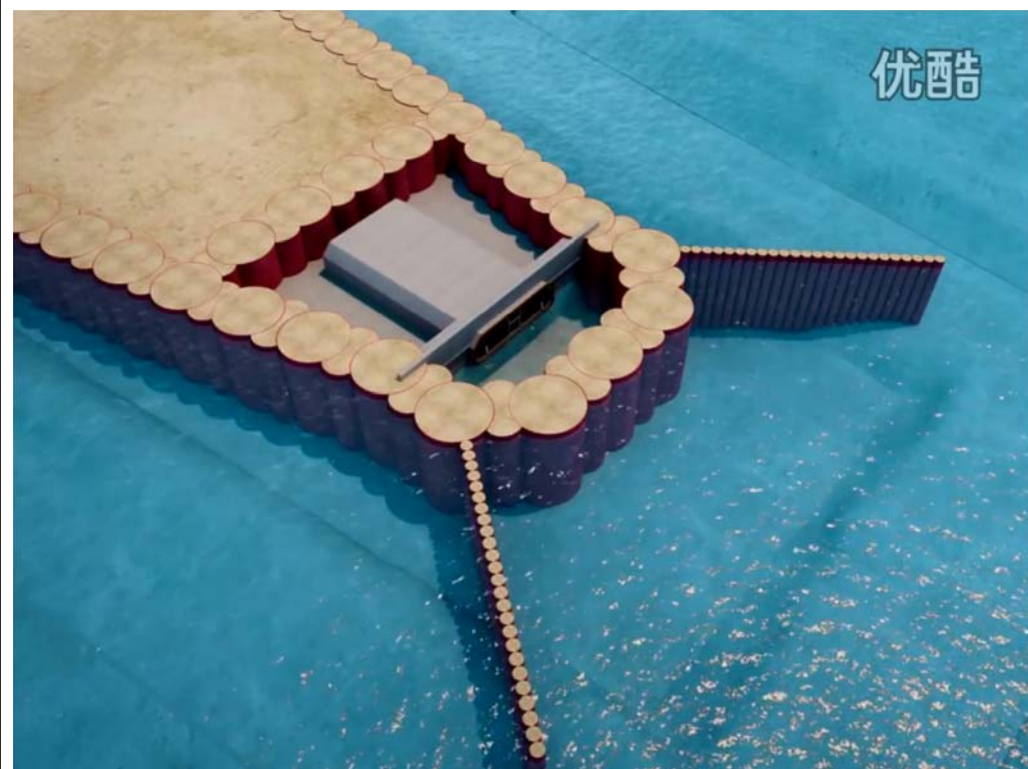


港珠澳大橋澳門口岸管理區-總平面圖

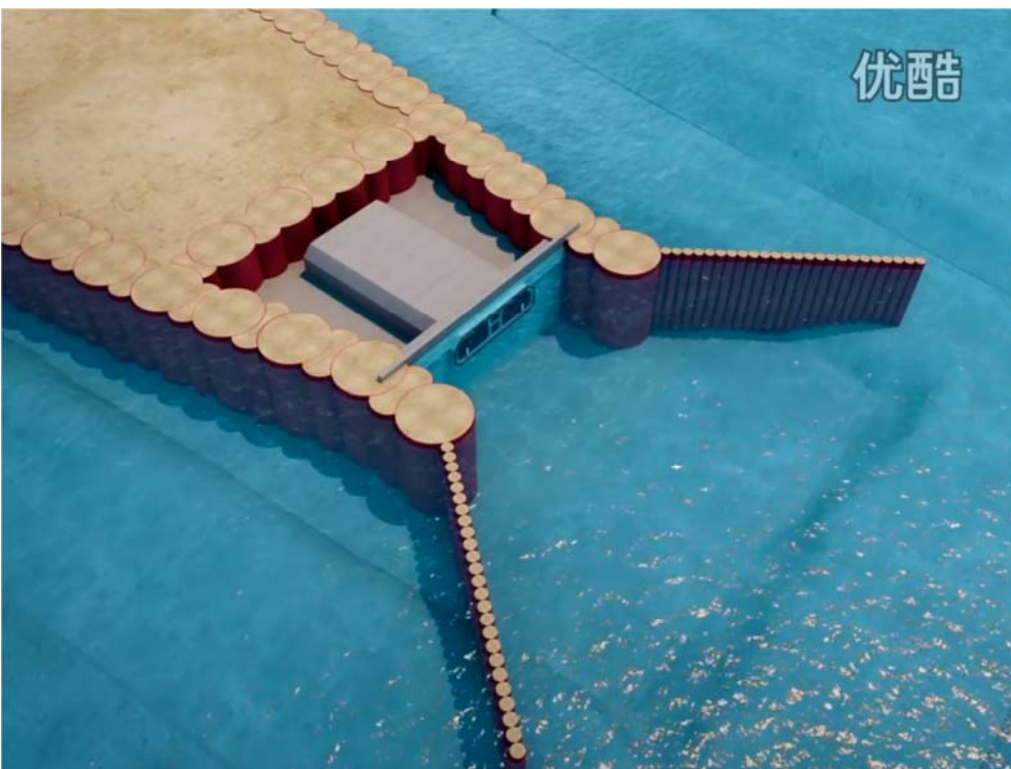
Planta geral da Zona de Administração do Posto Fronteiriço de Macau da Ponte Hong Kong - Zhuhai - Macau



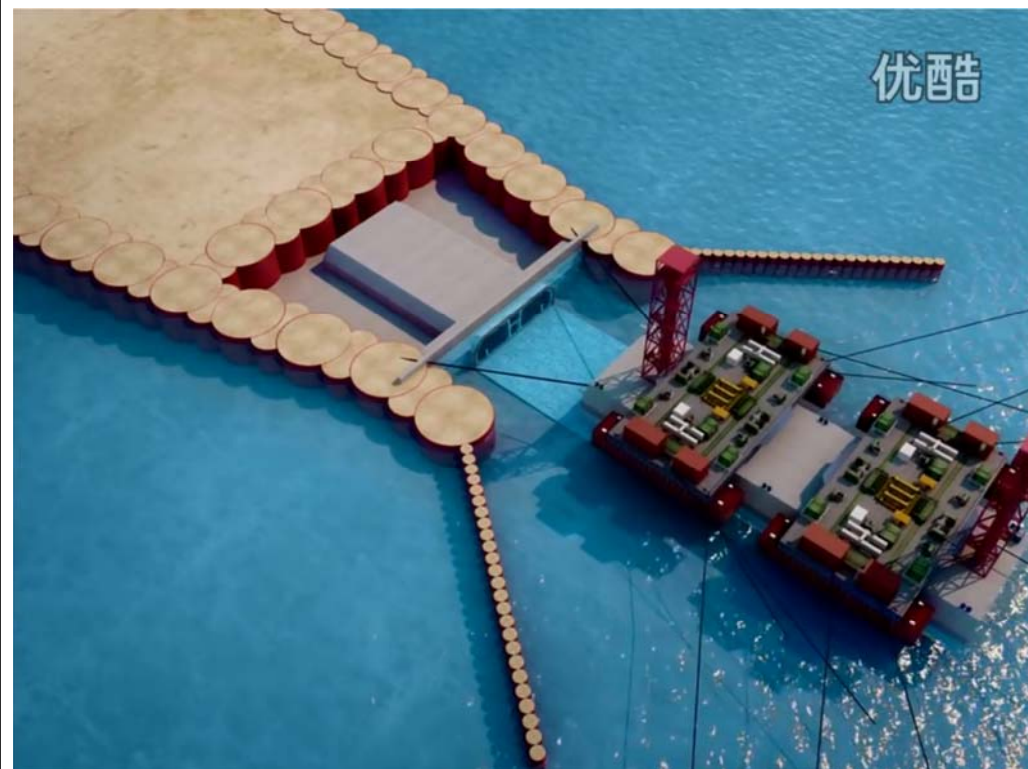
优酷

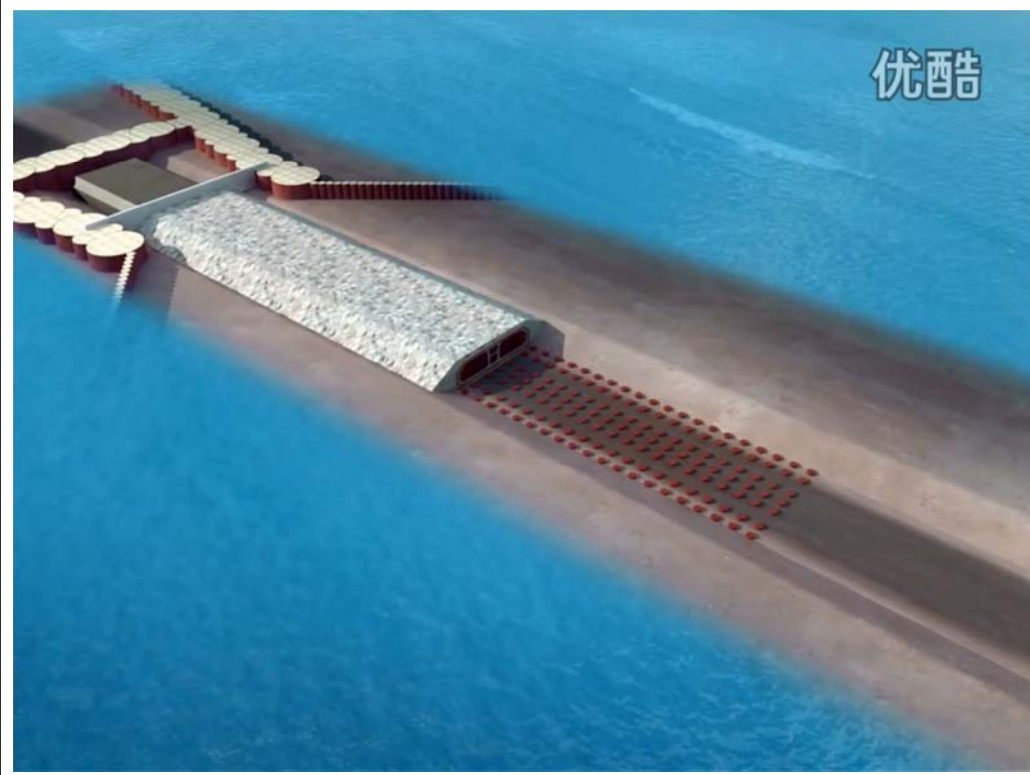
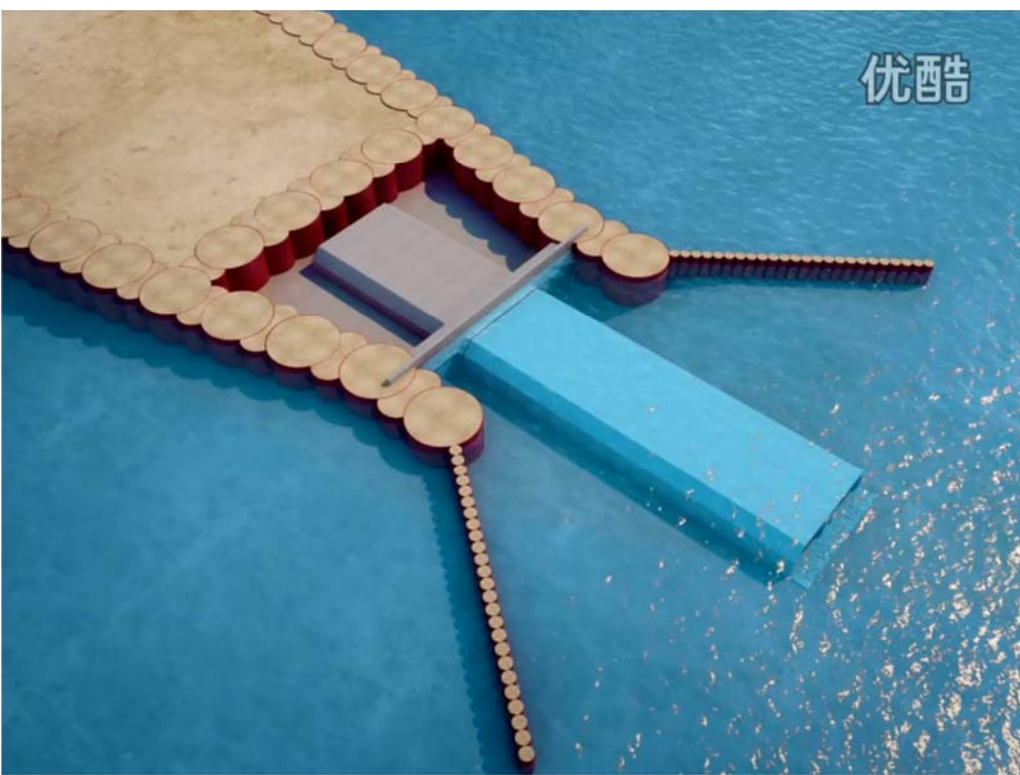


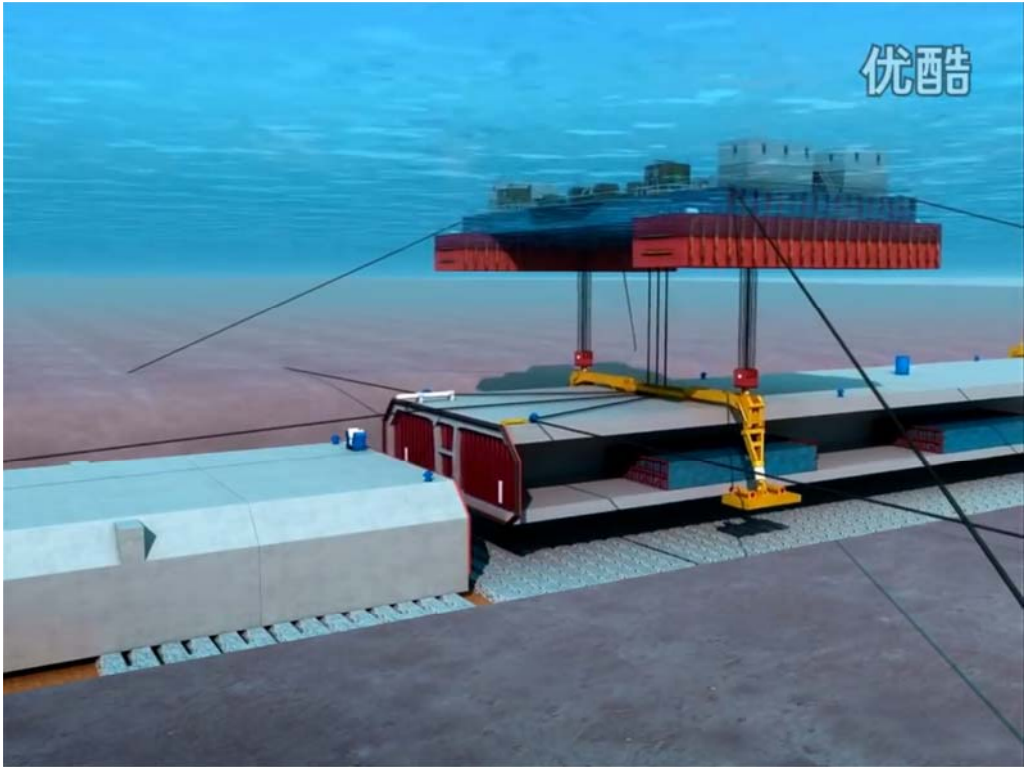
优酷



优酷







End of Part 2 Presentation