

# Comparing the spatial layout/configuration of the carriageway system for interchanging slipways leading to the high-elevated deck of the main bridge

This presentation is prepared after a visit to see the Zhongshan-Shenzhen Link Bridge in China on 24 February 2019. During the visit we can see part of the interchanging/approach-bridge network leading to the main bridge. This recalled me some similar project cases that I have seen also in Hong Kong some years ago.

In this respect, I prepared this presentation to show some of these similarity views.

Raymond Wong,  
Independent Research,  
City University of Hong Kong









Some views of the  
interchanging slide-ways



Some views of the interchanging slide-ways

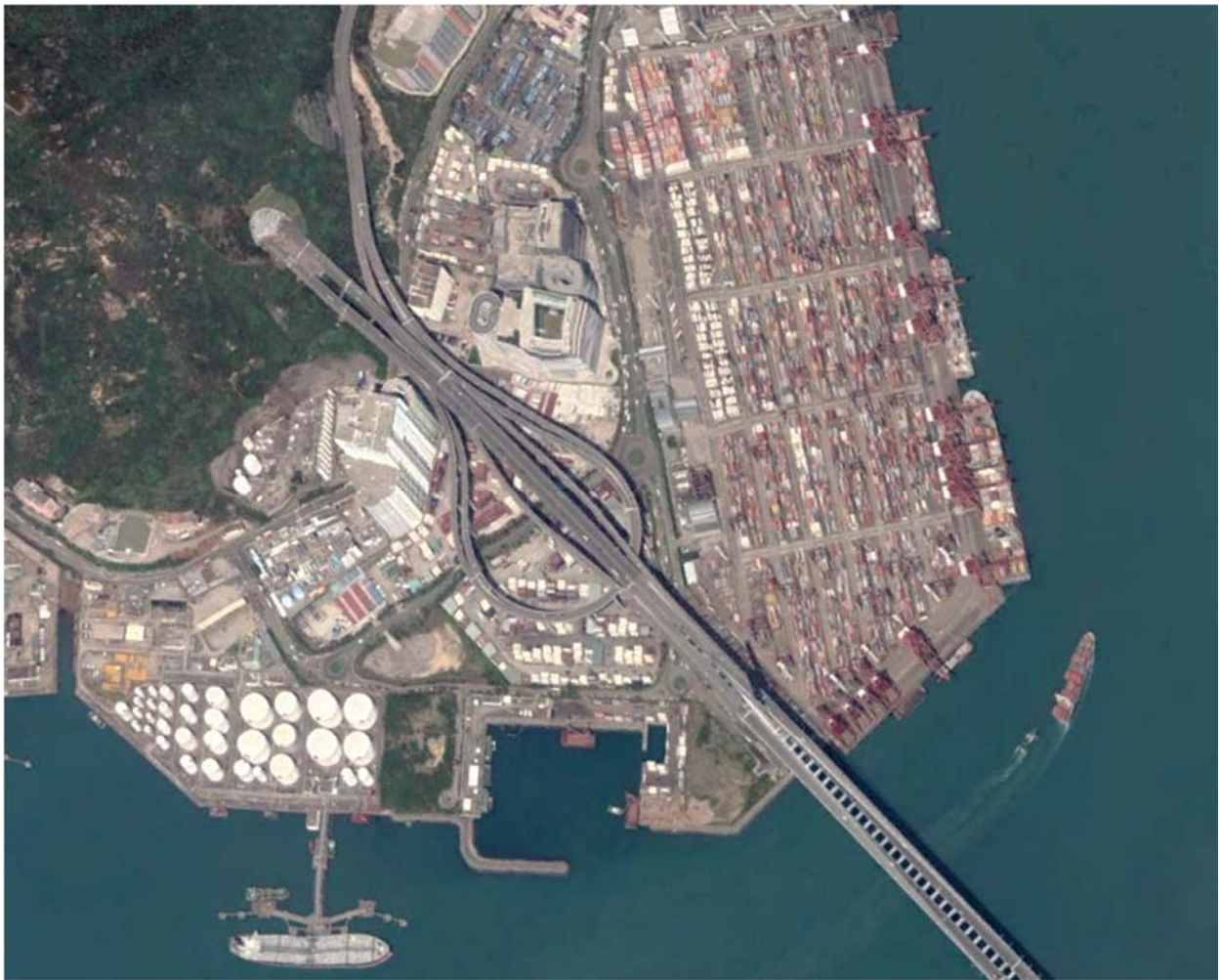


Some views of the  
interchanging slide-ways

In the following slides you can see the  
interchange network of the Hong Kong  
Route 8 projects at various locations

Tsing Yi South Interchange





The Tsing Yi South Interchange connecting the Stonecutters Bridge, Nam Wan Tunnel and the Container Terminal No. 9 at Tsing Yi

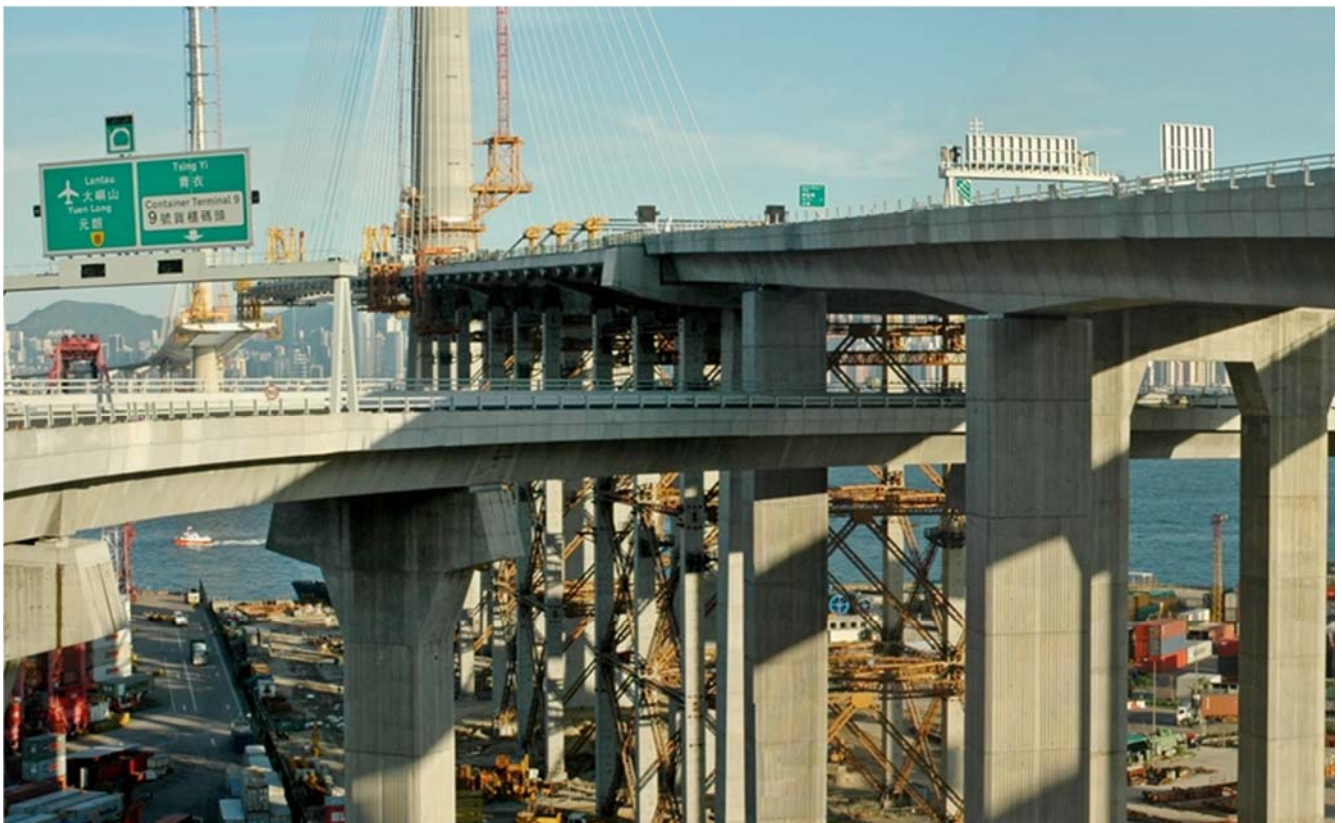
















Ngau Shuen Chau and  
Lai Chi Kok Interchange

















Ching Cheung Road Interchange and  
Butterfly Village carriageway























## Tai Wai Interchange



















This is only a casually prepared presentation to compare some similar highway works using photo images. If further detail in particular regarding the Route 8 projects, readers can visit the homepage of Raymond Wong and see a more detail presentation about the project.

[http://personal.cityu.edu.hk/~bswmwong/contents/resources/talk/construction\\_highlight\\_for\\_Route8.pdf](http://personal.cityu.edu.hk/~bswmwong/contents/resources/talk/construction_highlight_for_Route8.pdf)

Thank you for reading my presentation and looking forward to seeing you next time.