

# A photo review showing the Construction of the Link Bridges between IFC 1 & 2

Photos and presentation was taken and prepared by  
Raymond Wong,  
Retired Academic and Independent Researcher  
City University of HK

February 2022



The West  
and East  
Link Bridge

Layout of the overall International Finance Centre  
Development and its Neighbourhood





Fabricating the roof truss on ground level before lifting up to the roof level



Fabricating the roof  
truss on ground level





RC supporting frame for the lifting  
and future support of the roof truss





Roof truss attached to cable of the strand jacks preparing for the lifting at a later time



Strand jack



Detail of the roof truss  
supported onto the RC frame







Construction of the floors inside link bridge (hung by hangers made of steel tube)





Detail showing the erection of the floor joist being hung onto the roof truss by steel hangers





Roof truss placed on top of supporting frame, floor frame below partially hung

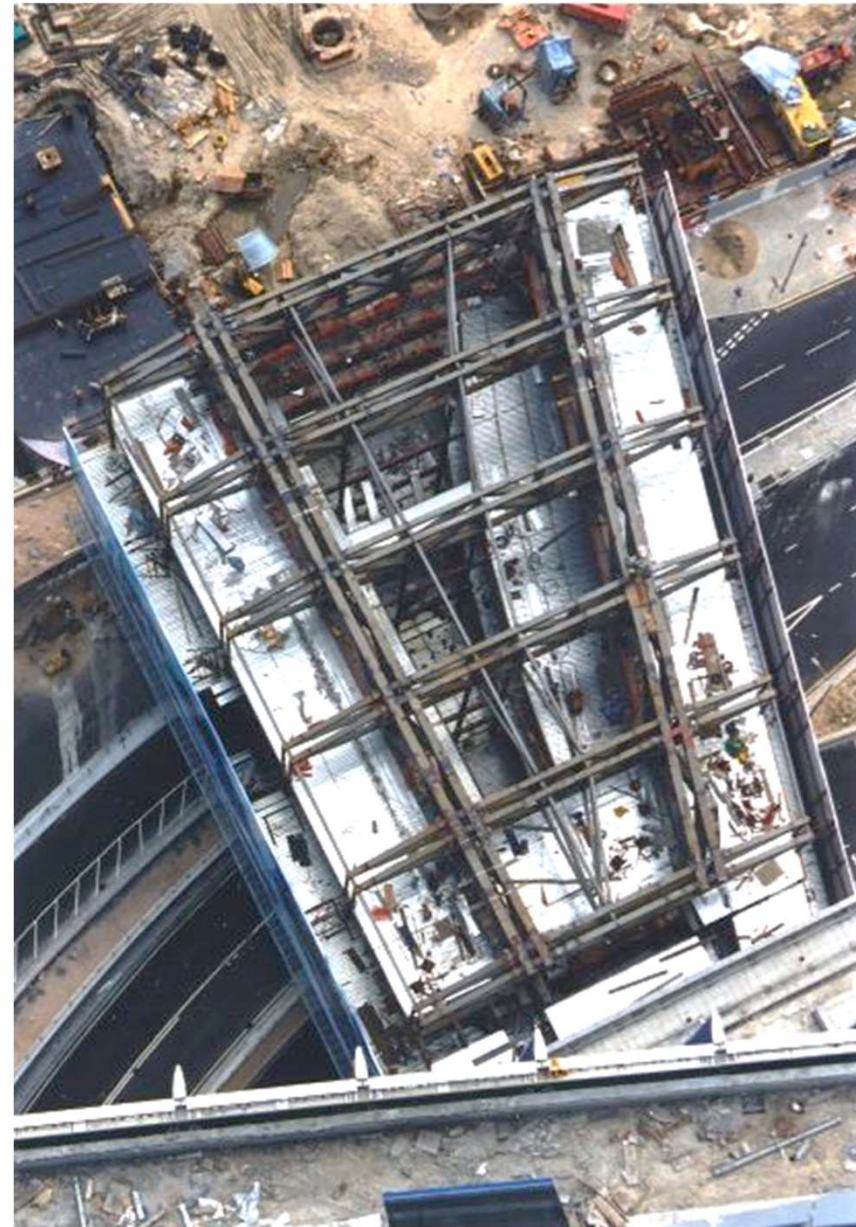


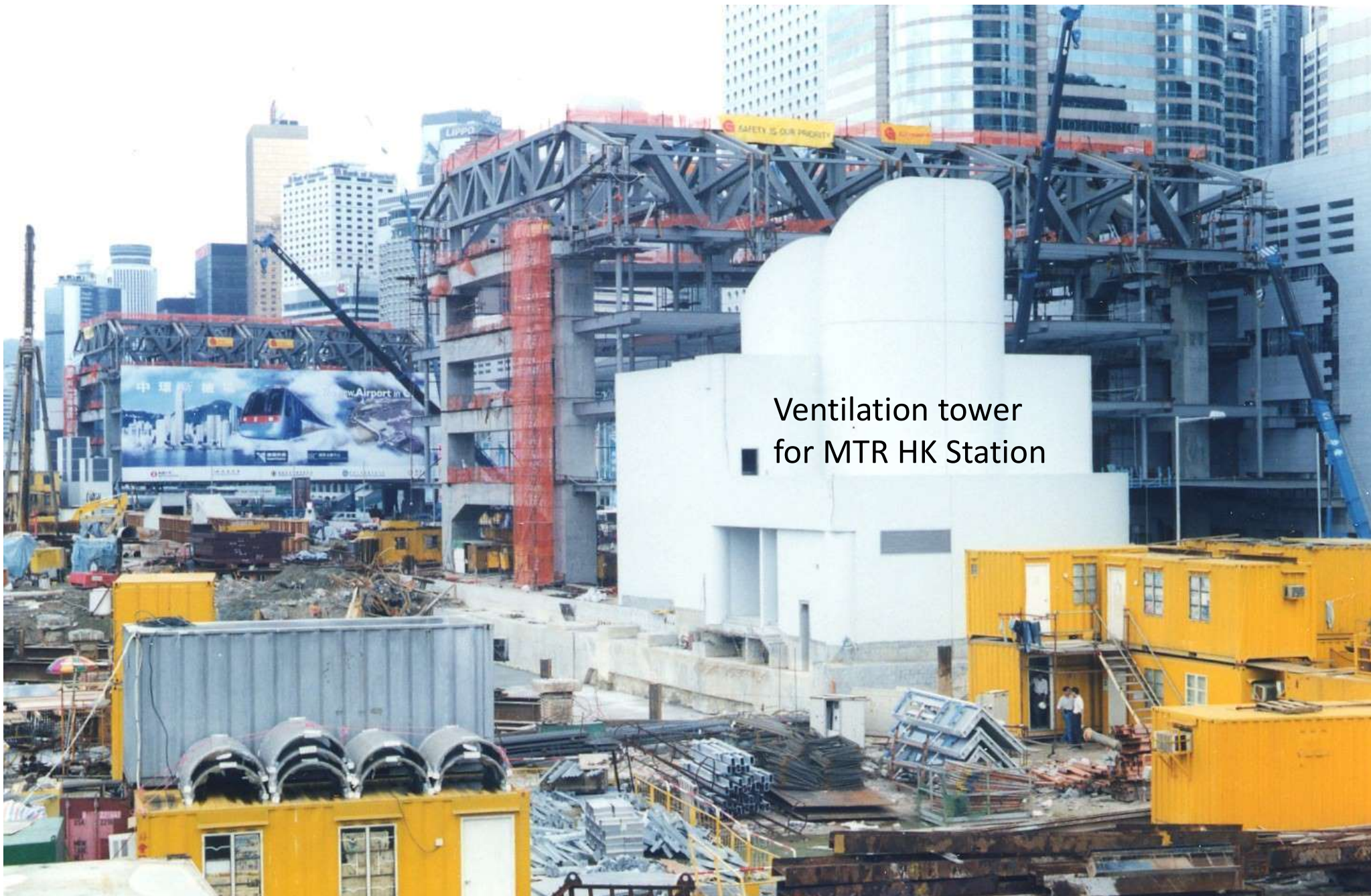


View inside the link bridge seeing the main truss and floor deck before slab concreting



The main frame of the link bridges being completed as viewed from the roof of IFC 1 tower.





Ventilation tower  
for MTR HK Station





Present view inside the  
interior of the link bridge



End of Presentation