

## Use of modulated truss members as temporary works to facilitate construction in complex site conditions

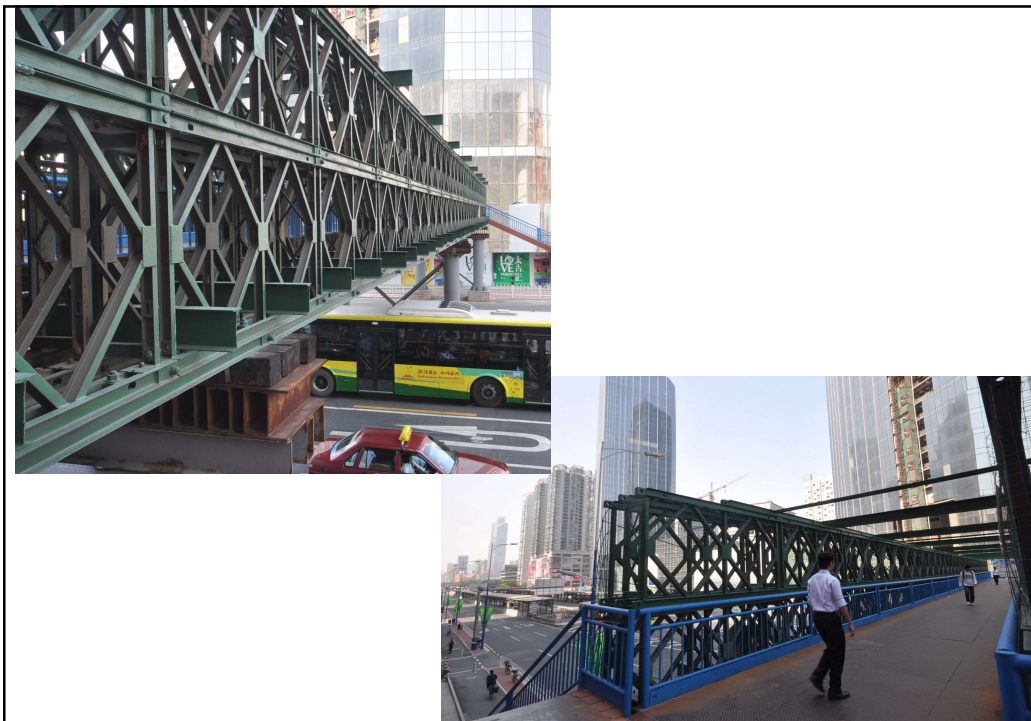
This set of presentation is prepared by Raymond Wong  
to summarize part of his studies during 2008 to 2011  
with a focus on Guangzhou city development.  
March 2022



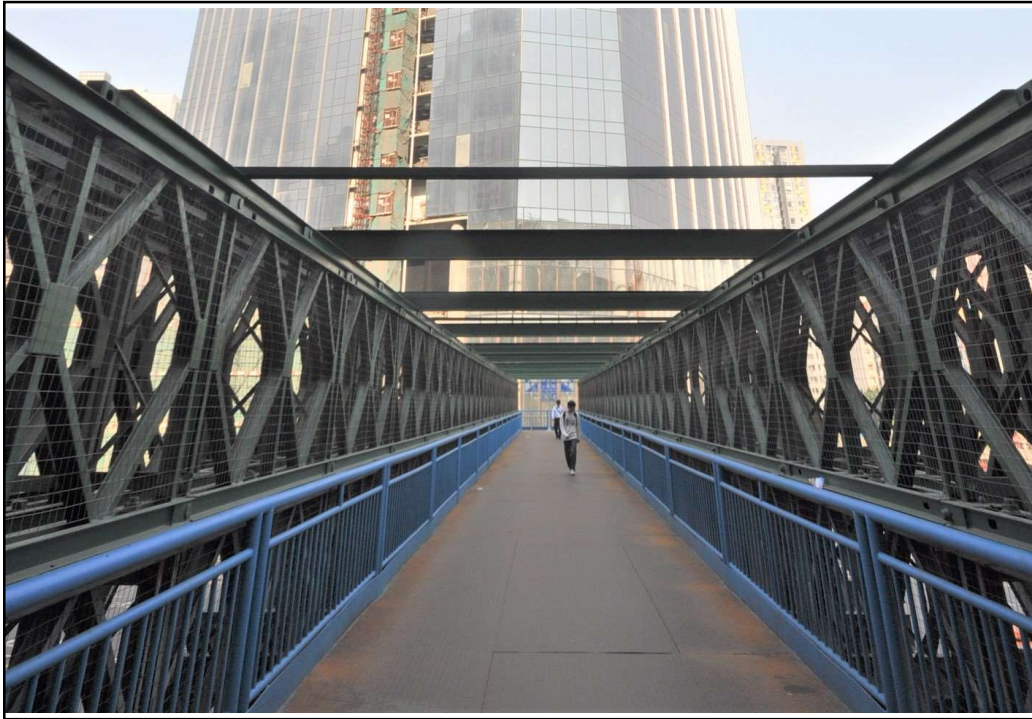
General view of modulated trusses before setting-up



Using modulated trusses to form a temporary pedestrian footbridge







Use as temporary roadway linking  
up disturbed servicing roadways  
to allow large area of excavation

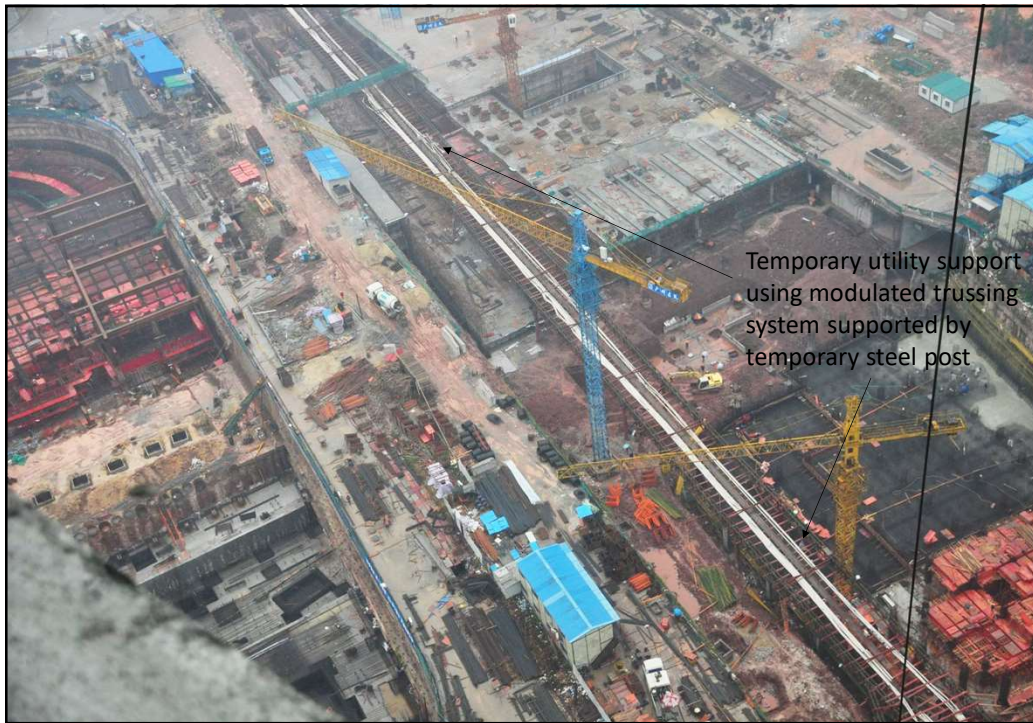






Using as temporary utility support

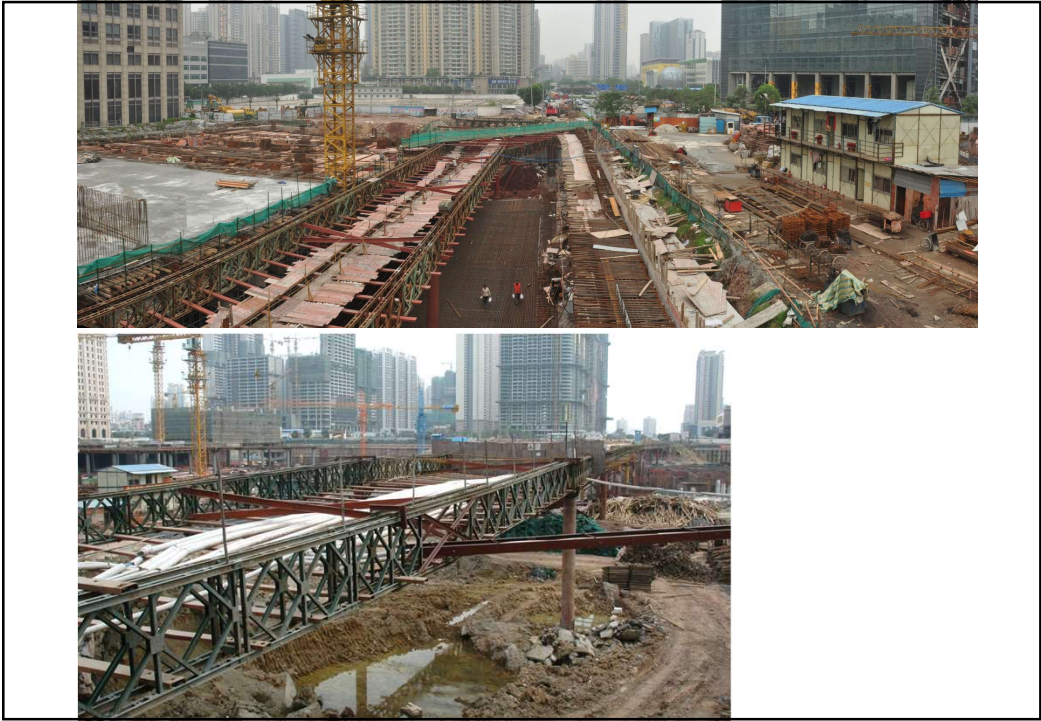












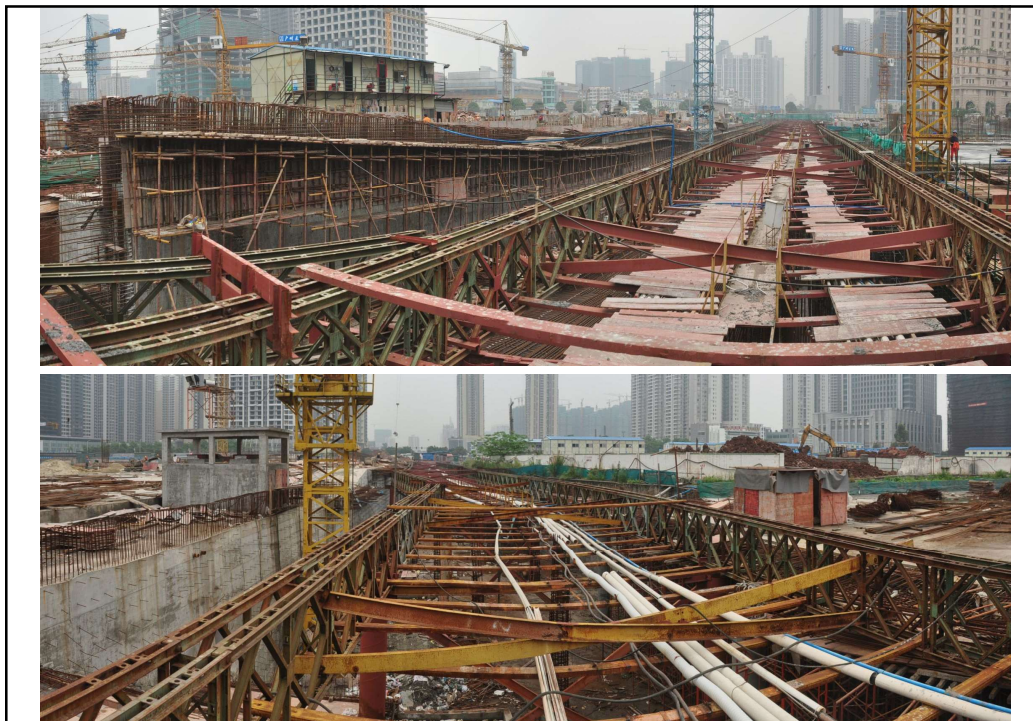








Closer view of some of this temporary utility support in the form of a continuous simple truss bridge

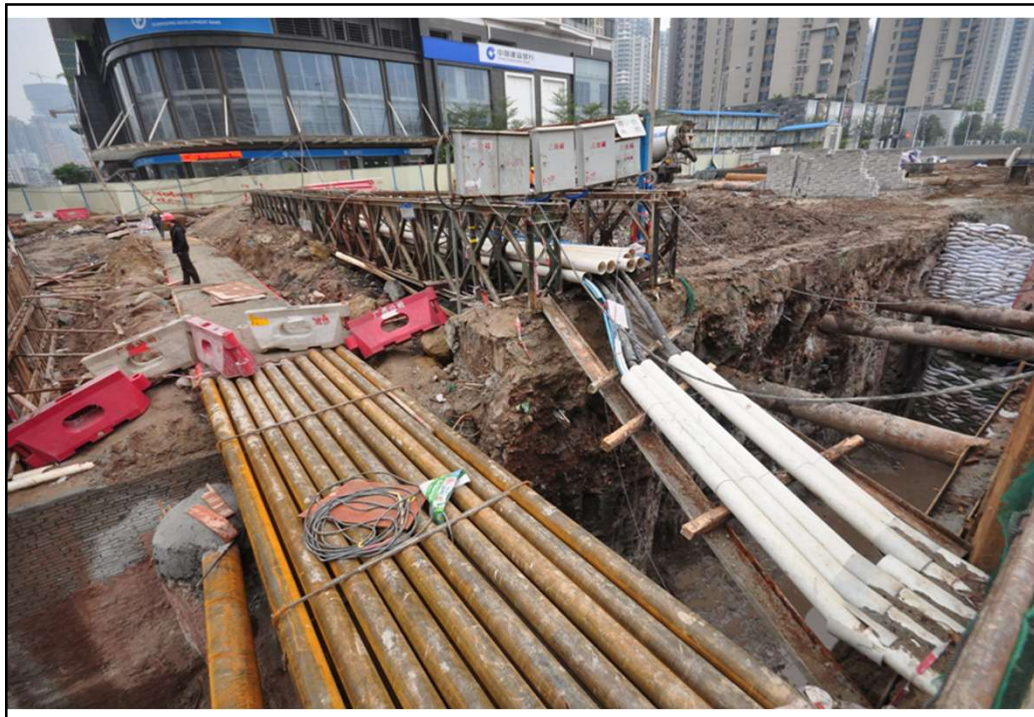








Examples of using modulated trusses  
in facilitating other minor roadworks





Examples of using modulated trusses  
to set up the falsework system to  
construct a bridge by incremental  
launching method  
(Leide Bridge in Tienho, Guangzhou  
廣州天河腊德橋)

















Examples of using modulated truss  
in other civil works





## End of Presentation

If interested parties wish to know more about other similar projects that Raymond has studied during the past years about Guangzhou development, they can contact him using his e-mail.

[bswmwong@friends.cityu.edu.hk](mailto:bswmwong@friends.cityu.edu.hk)