

A photo review of some representing project cases making use of heavy-lifting to construct

Materials prepared by Raymond W M Wong,
Retired academic and Independent Research,
Contact: bswmwong@friends.cityu.edu.hk

20230208

Hong Kong Convention and Exhibition Centre





26 4 1996











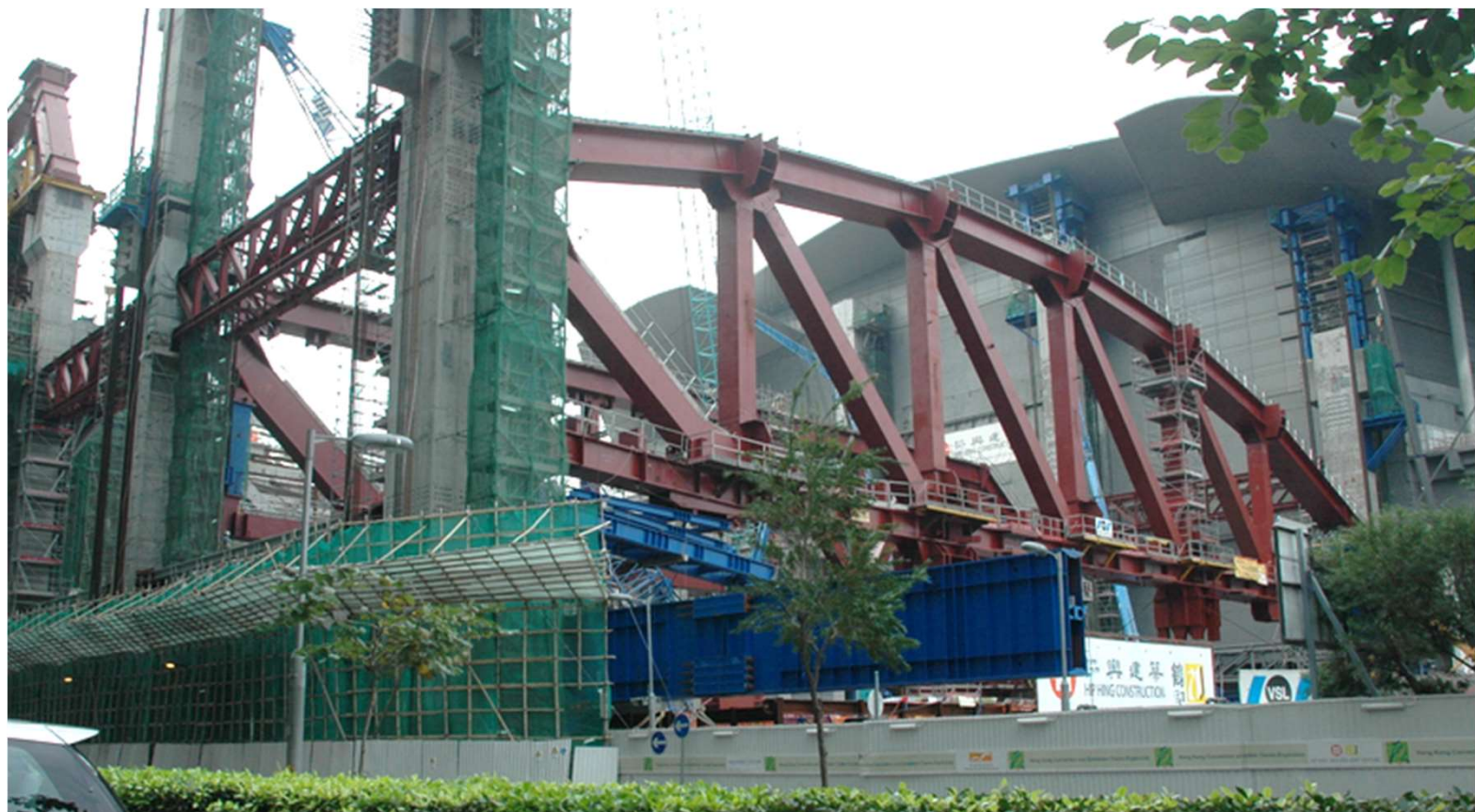
HKCEC Phase II Construction of Atrium Link



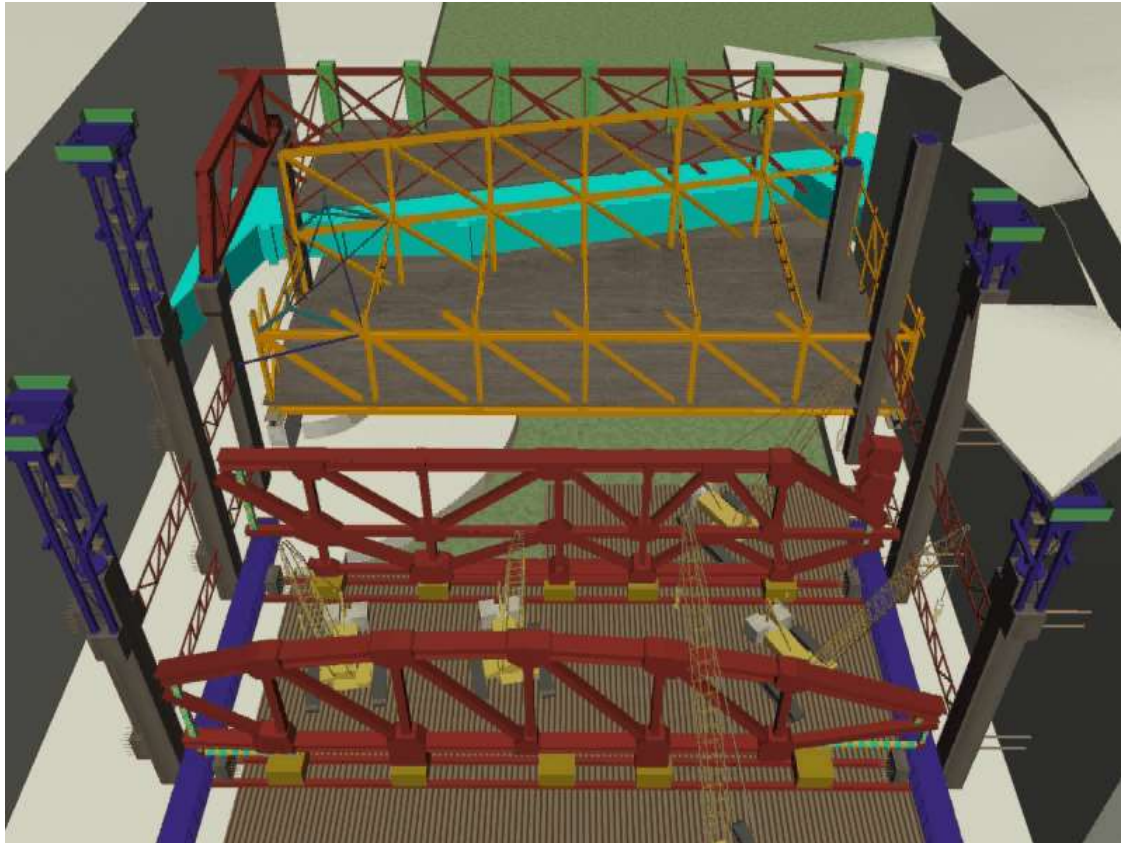
External of Hong Kong Convention and Exhibition Centre



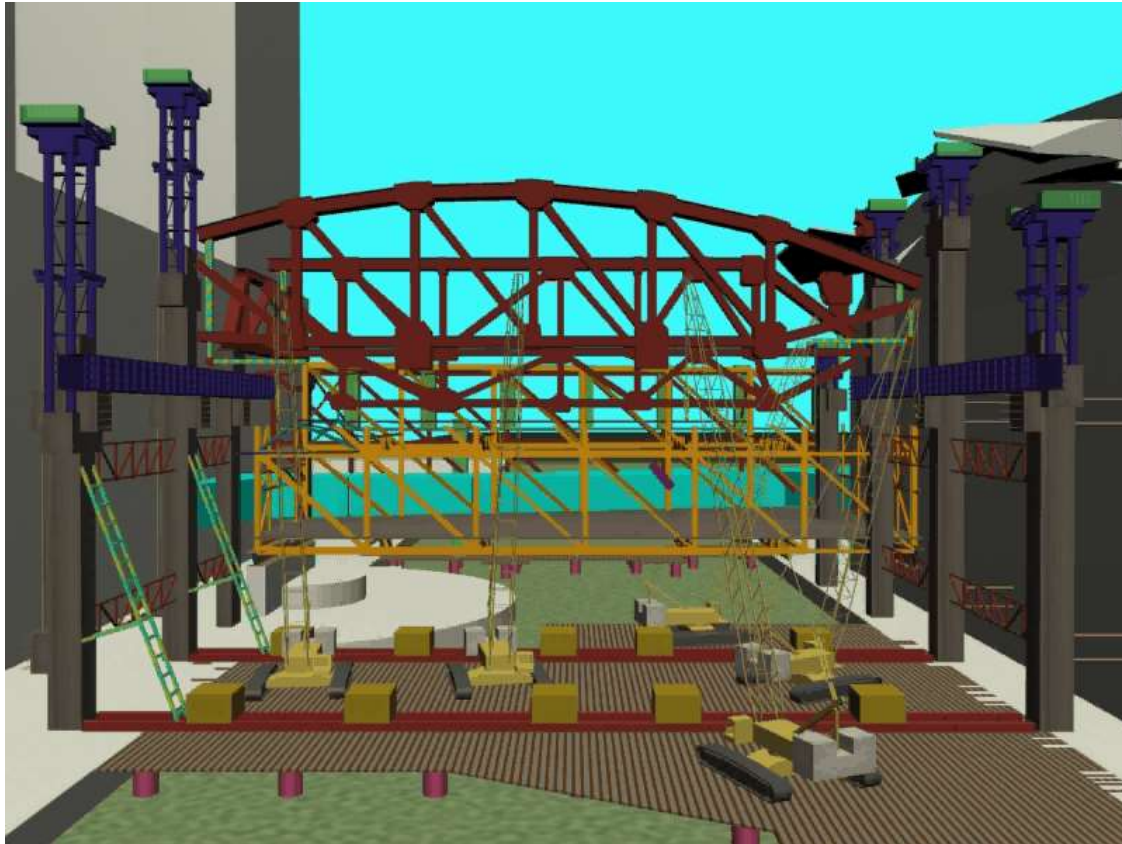




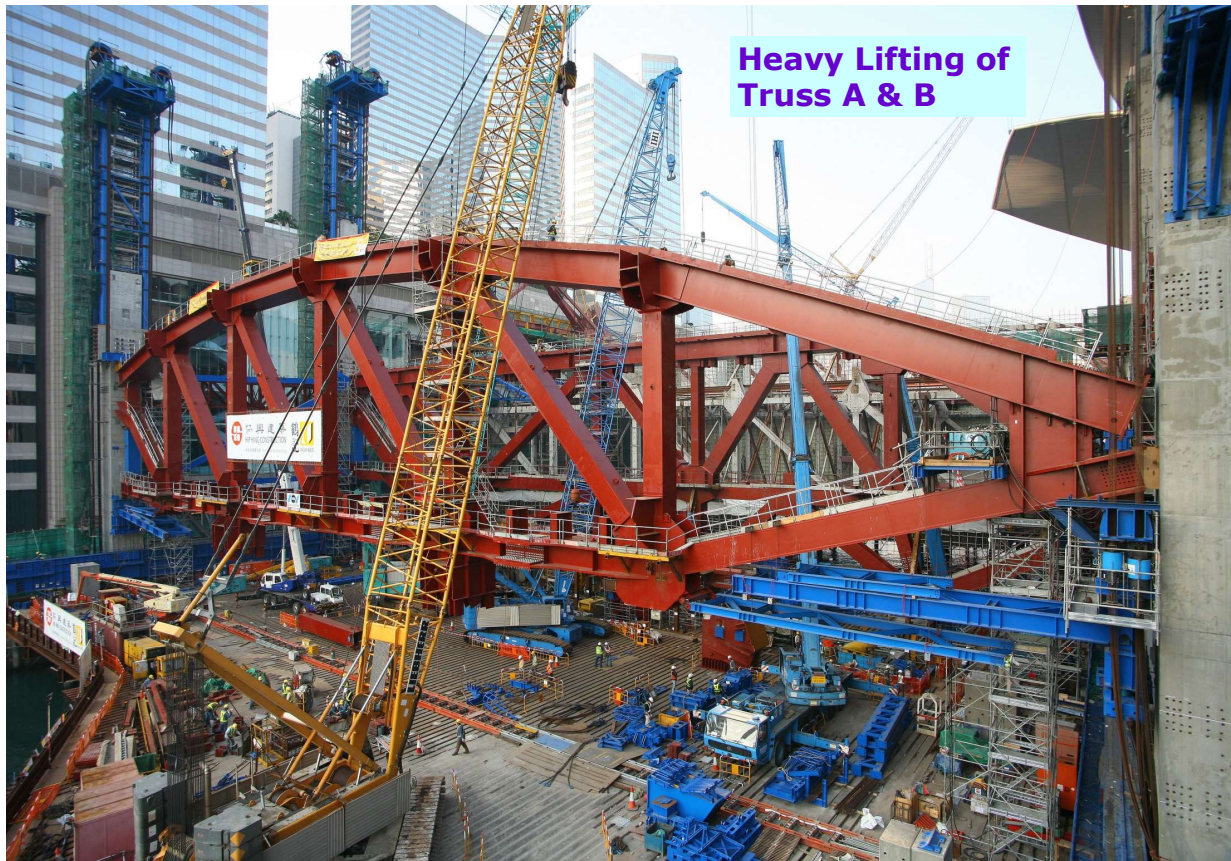
Heavy Lifting of Truss A & B



Lifting of Truss B and then Assembly of Truss C

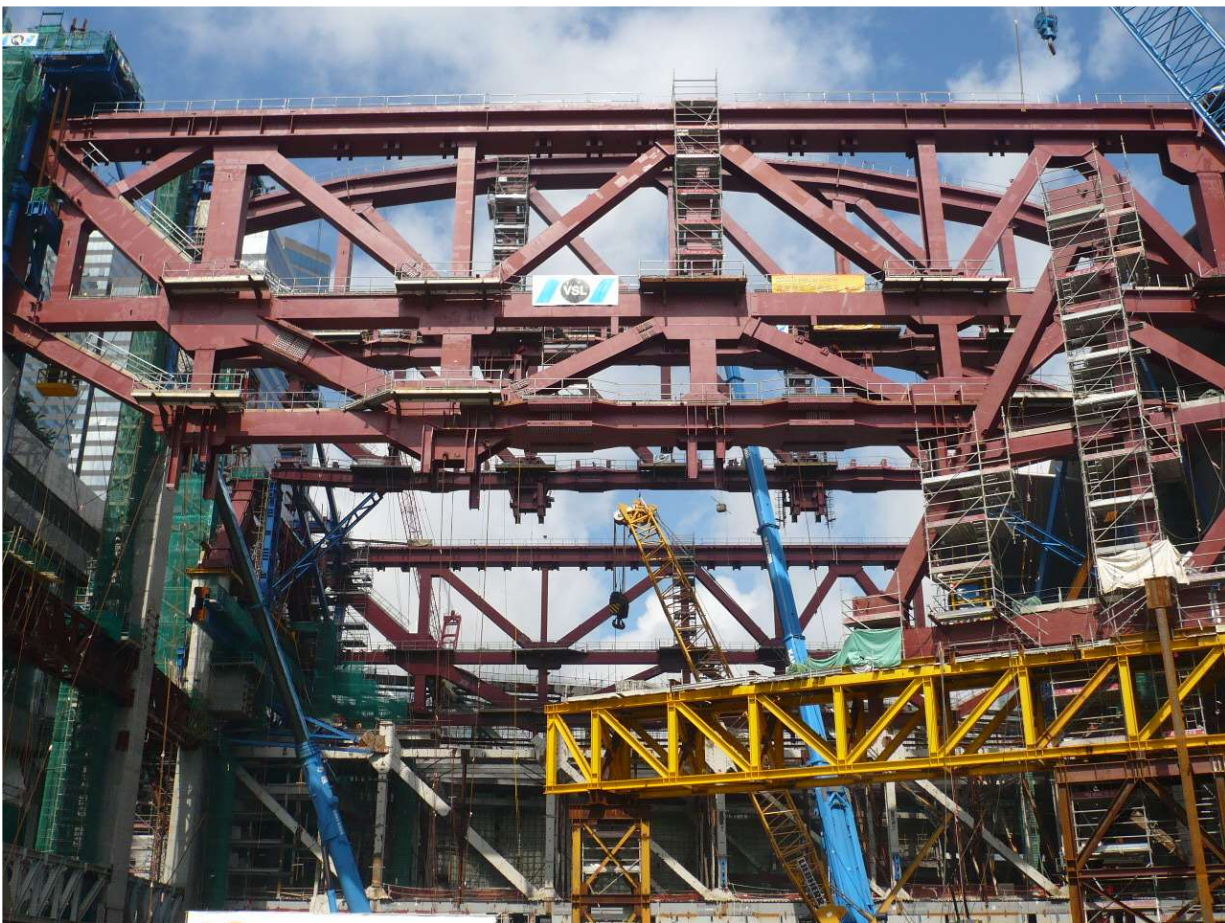


Heavy Lifting of Truss A & B

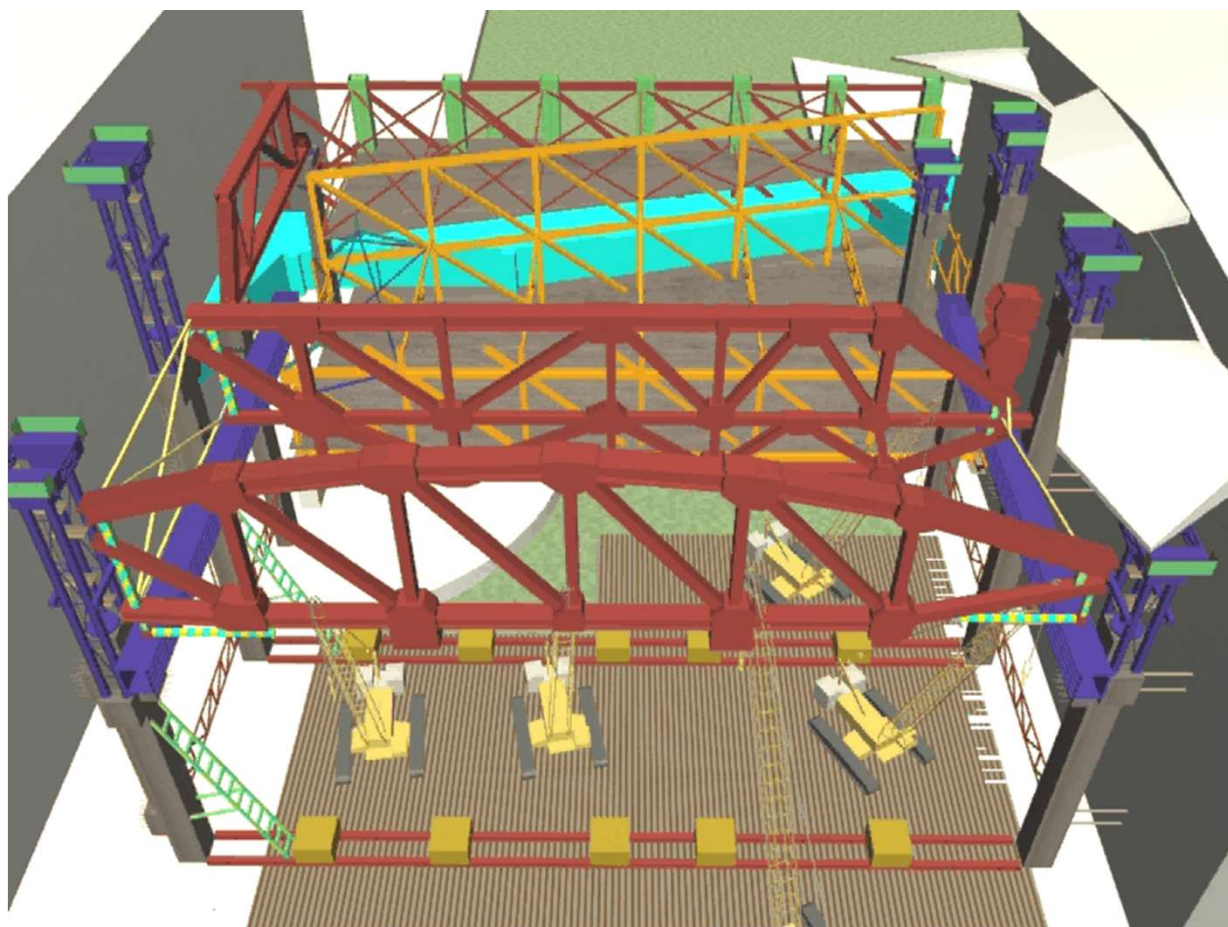


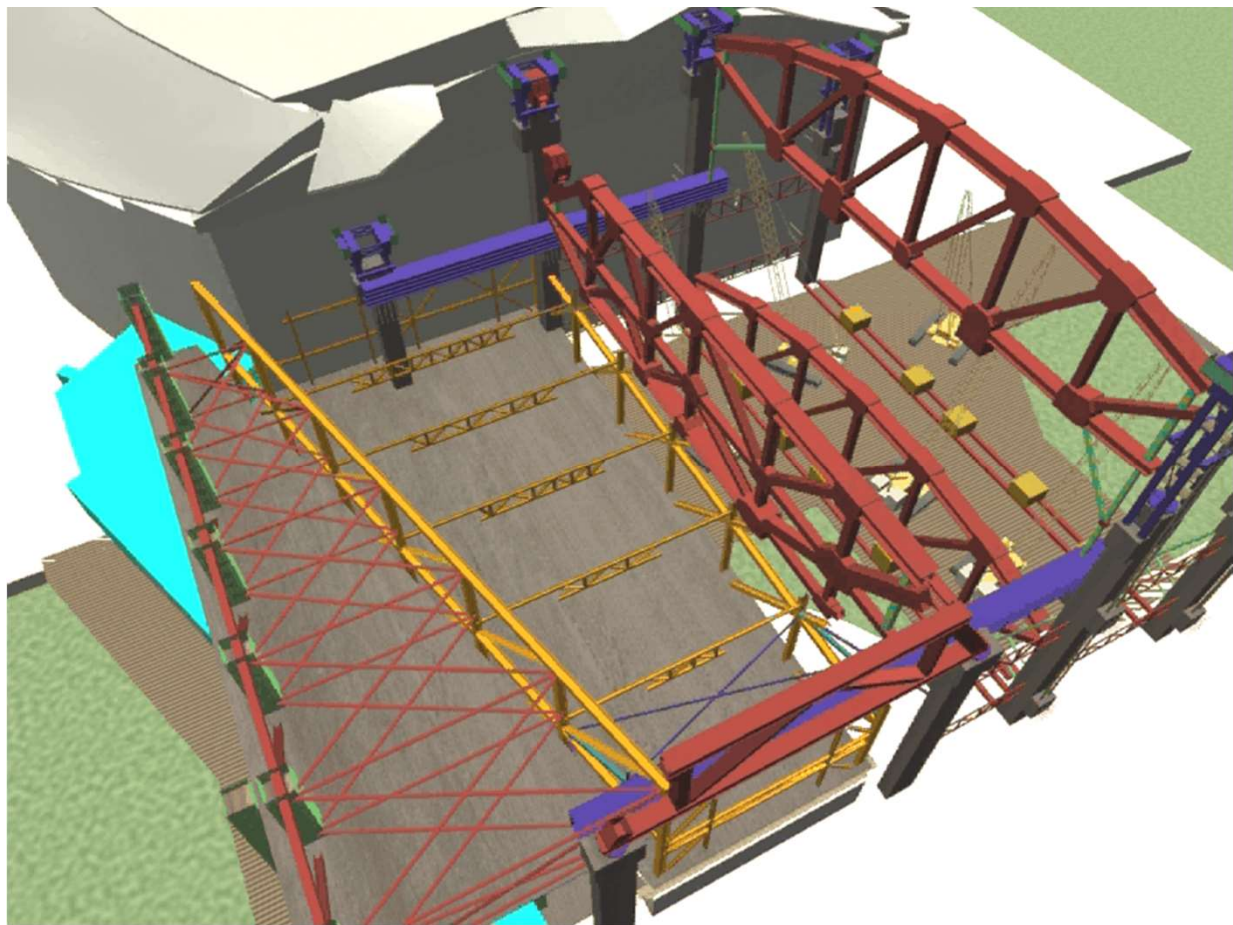
Heavy Lifting of Truss D











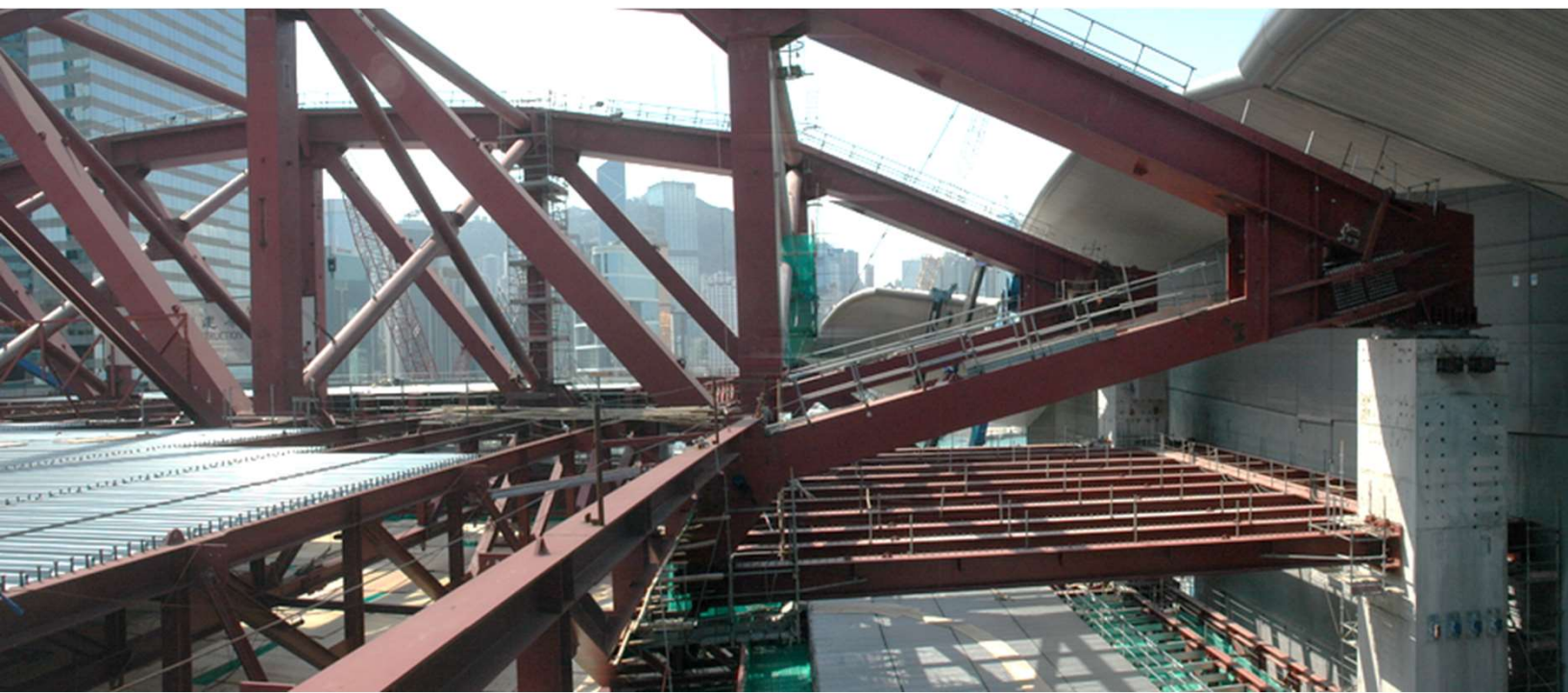




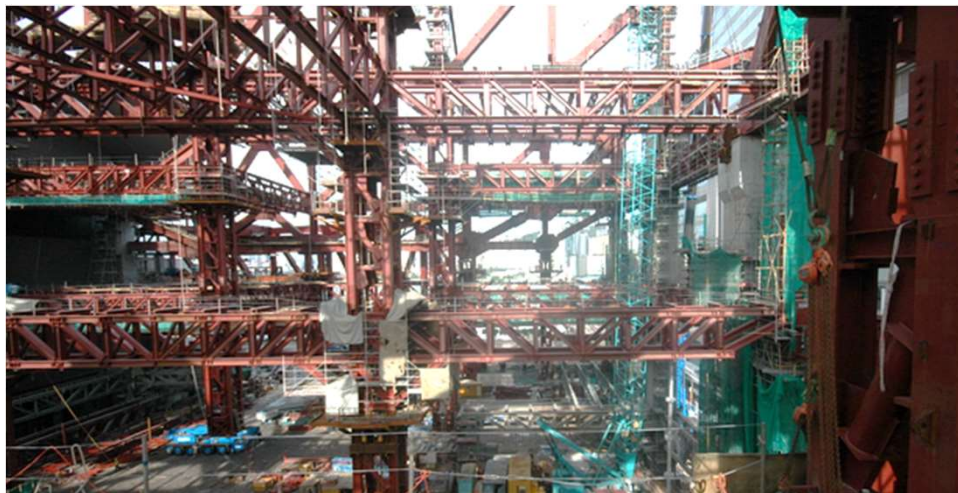




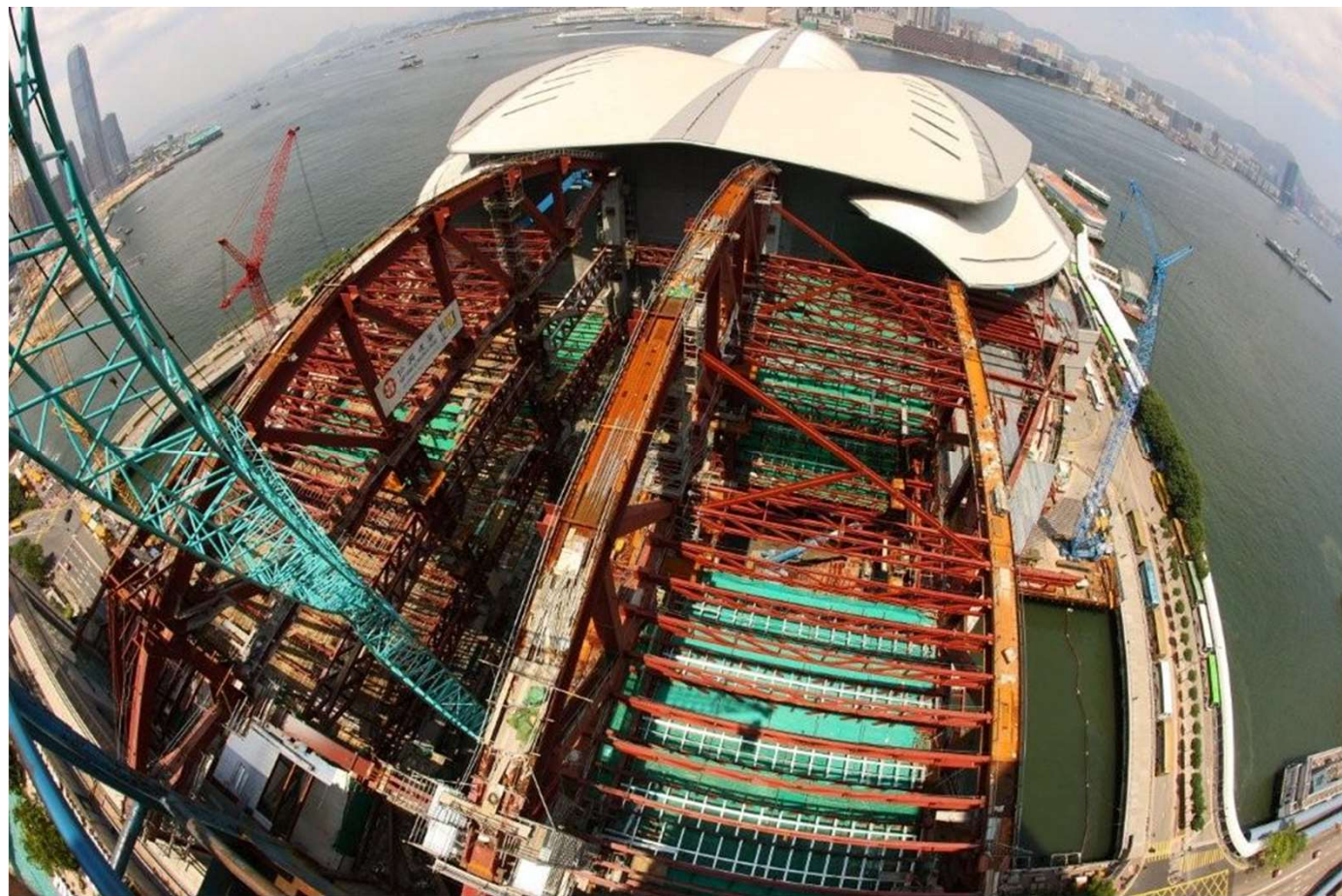












Xiqu Centre

mid 2015



End 2015







early 2016

mid 2016

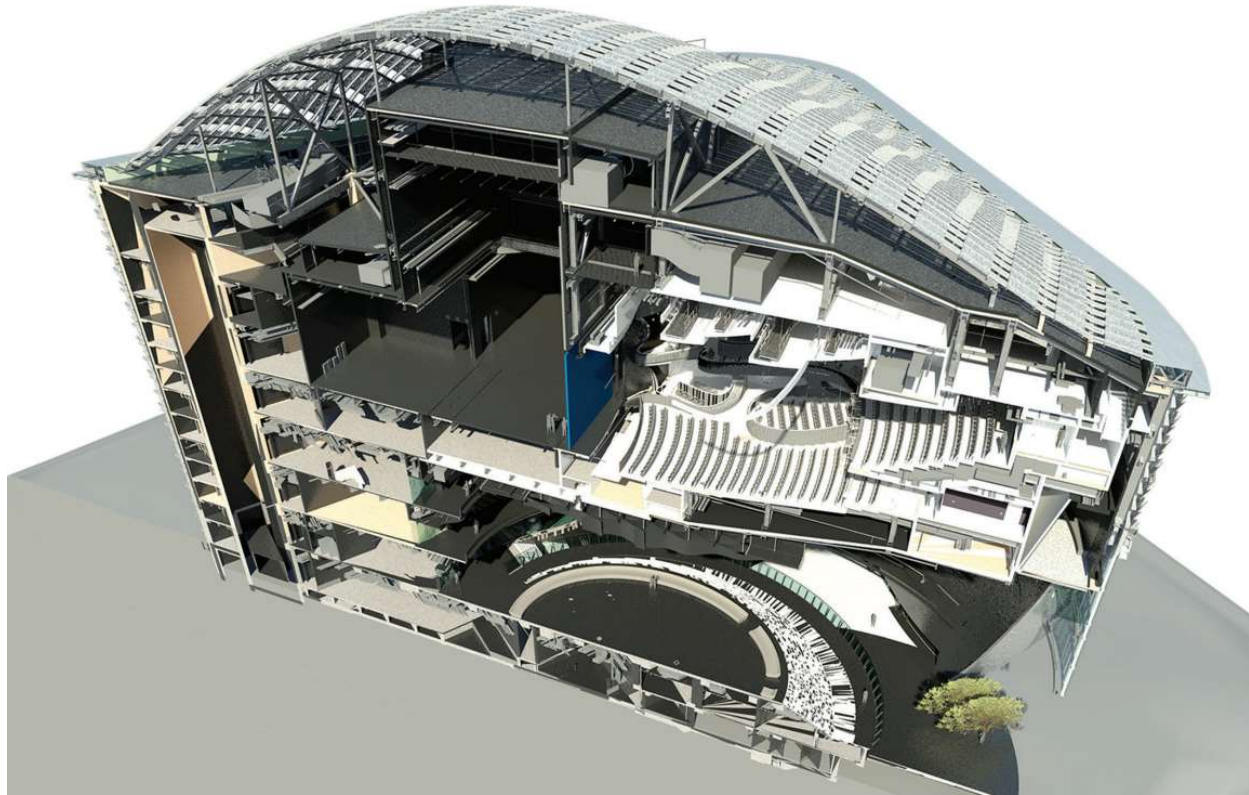




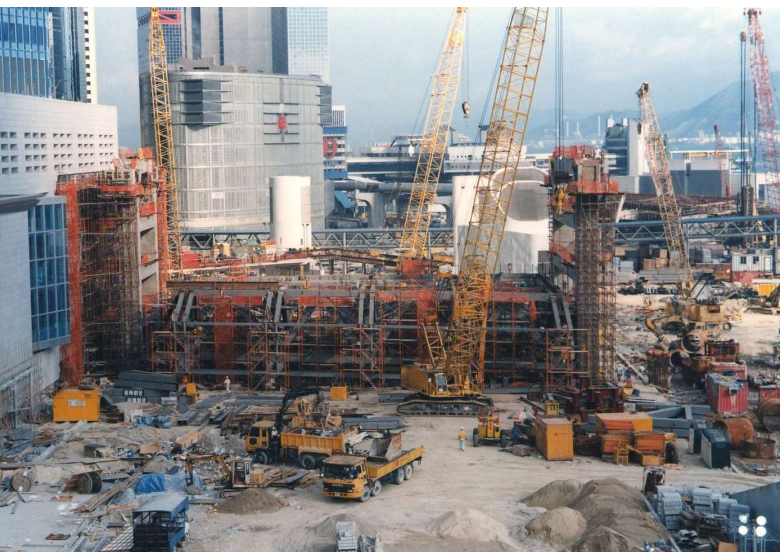


End 2016





Linking bridge between HK Station & IFC 2















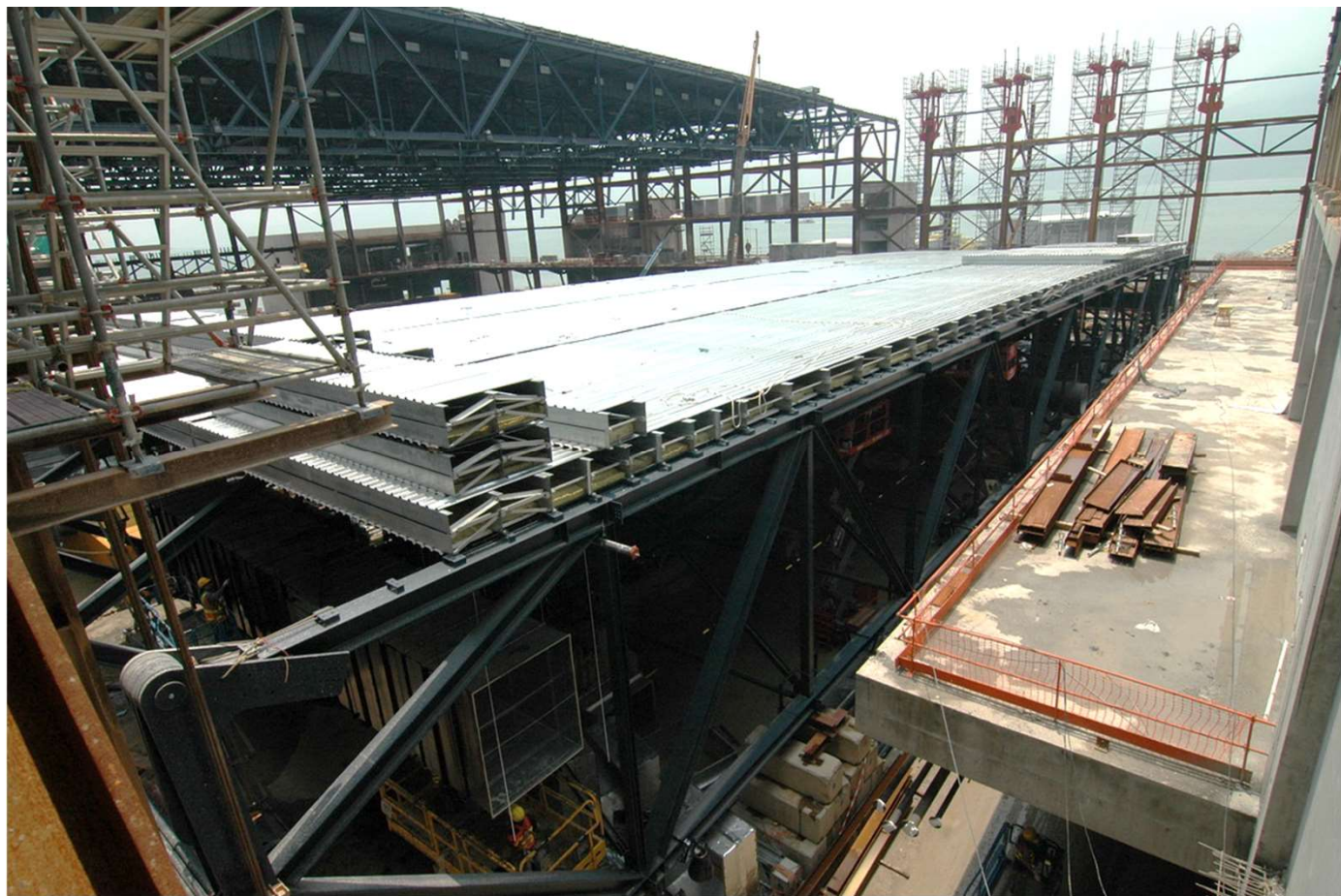






Asia World Expo













End of presentation