

# Some cases learnt from mega projects in Mainland China

Presentation material prepared  
by Raymond Wong Wai-man  
for a Webinar Talk on July 2022

Development of the new Guangzhou Axis  
at Tianhe 2007 - 2015



An overview of the new GZ Axis  
at Tianhe, as seen in 2009







Understanding more about the scale of works in mega projects





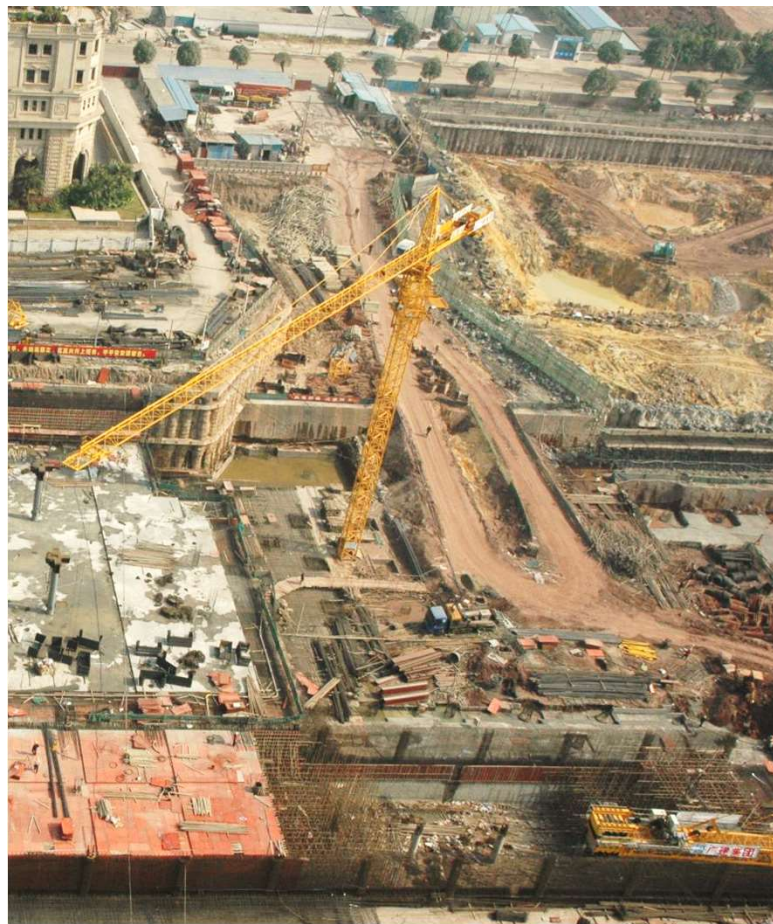
Understanding more about the scale of works in mega projects



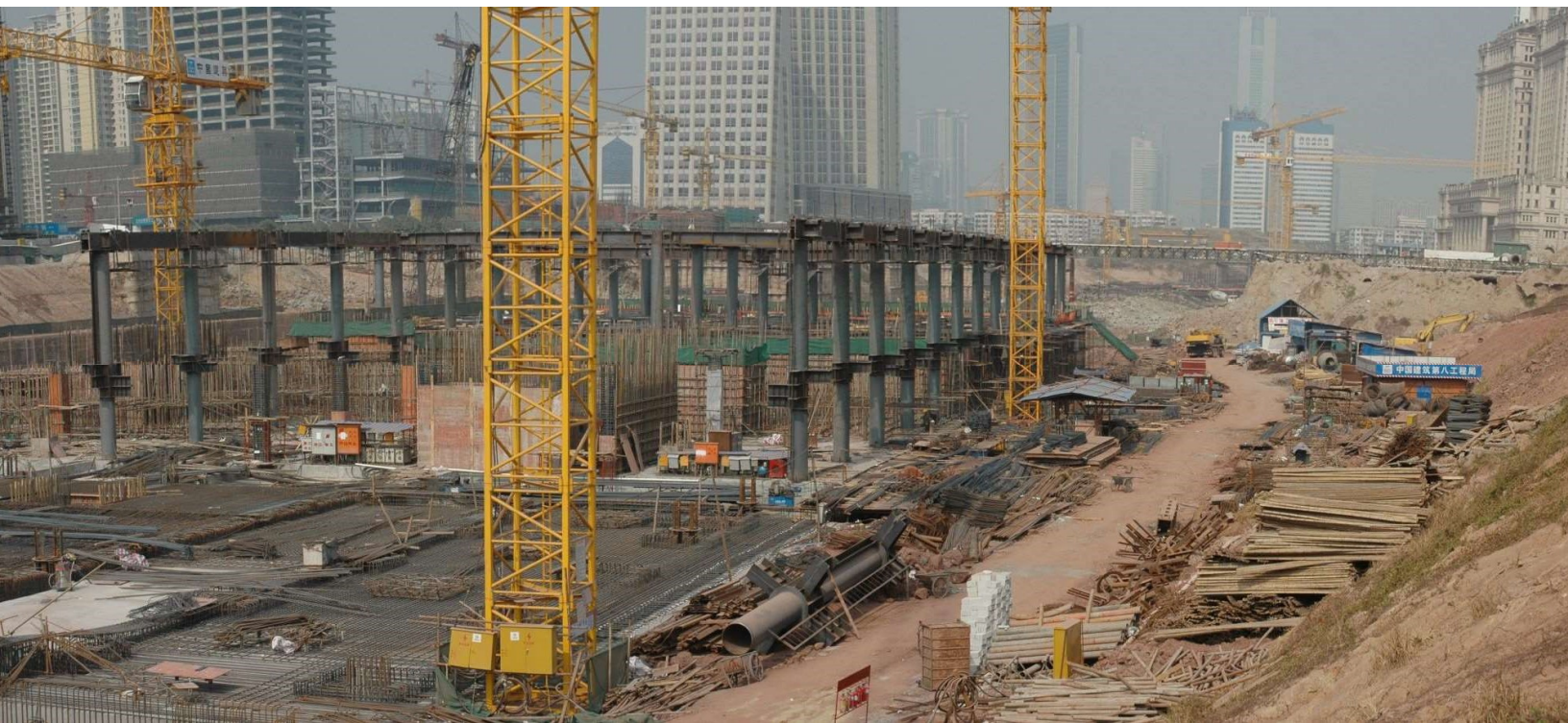


















Learning the meaning of  
spatial complicated in  
mega-size projects





















Understanding more about parallel work activities in mega projects

























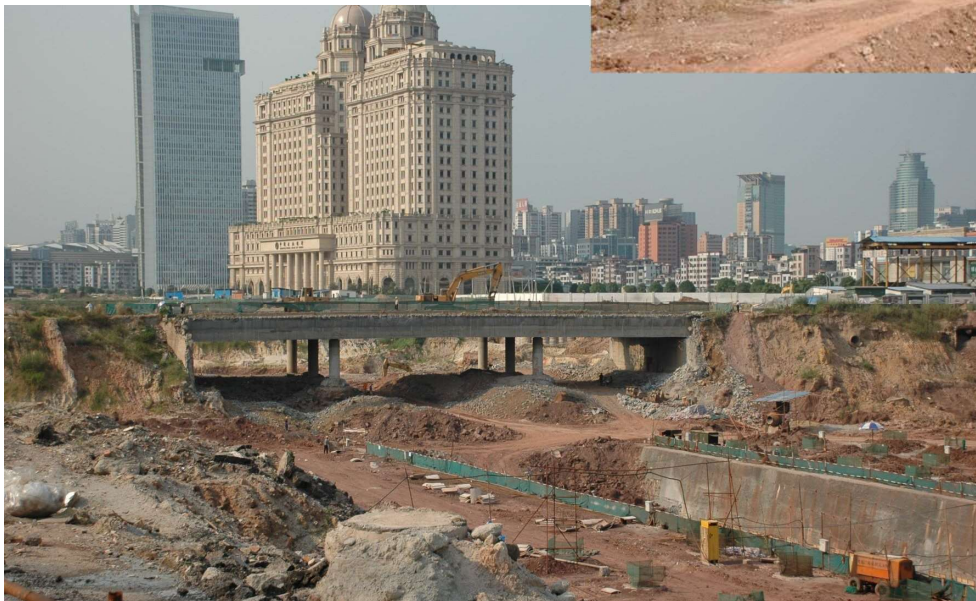
Provision of temporary traffic  
within excavated zone







Removal of the  
abandoned roadway









Replacement/diversion  
of existing roadway













Provision of temporary access roadway









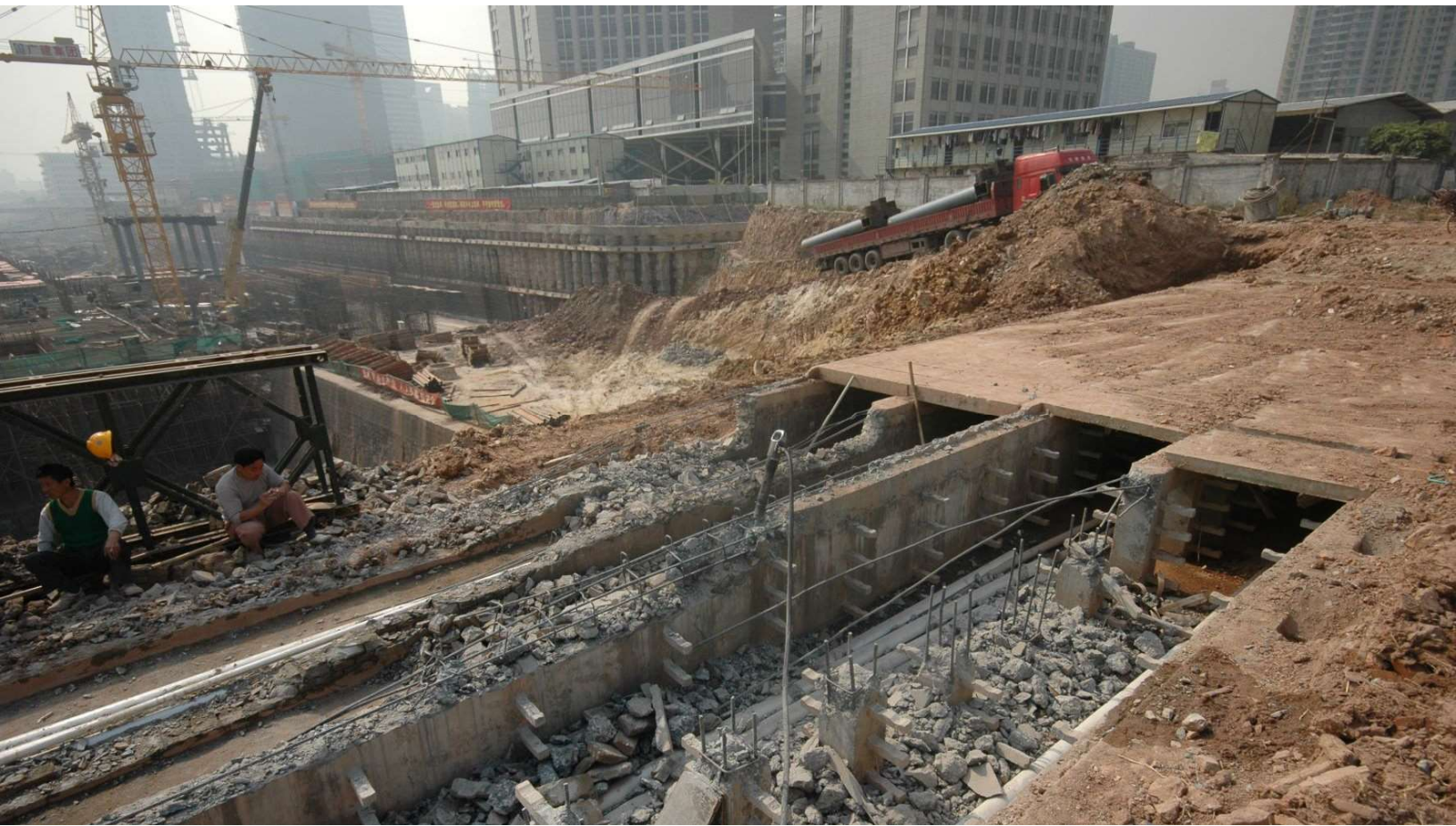


Using cast-in-situ RC strut as lateral support



Understand the reality working  
inside a complex basement

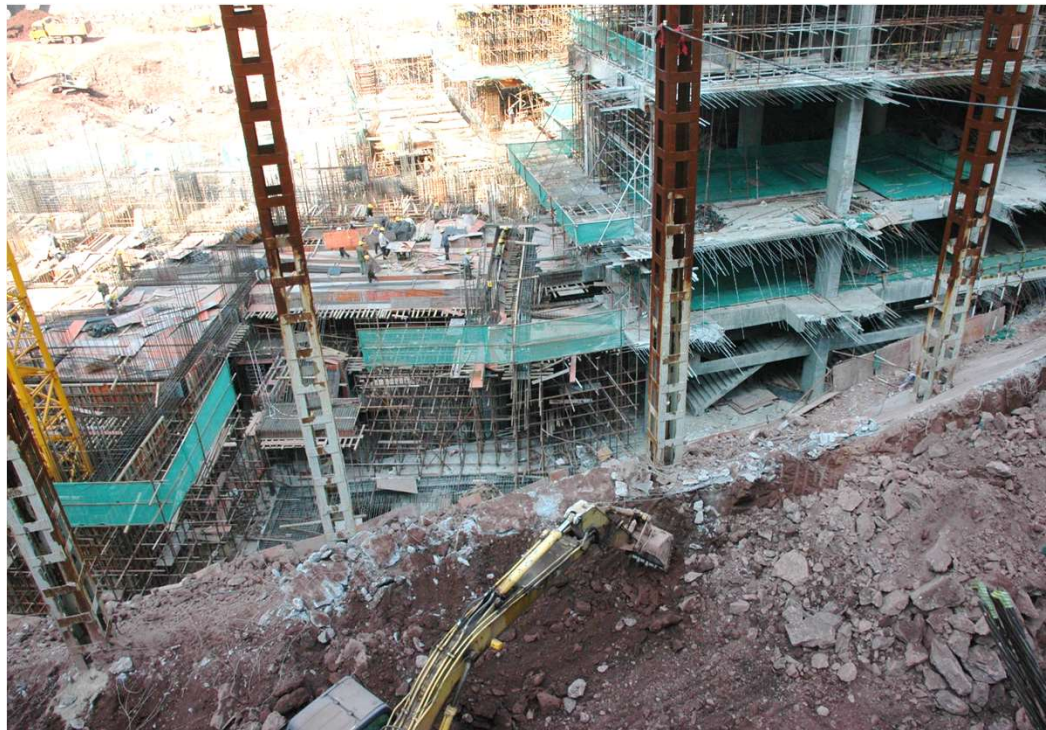
















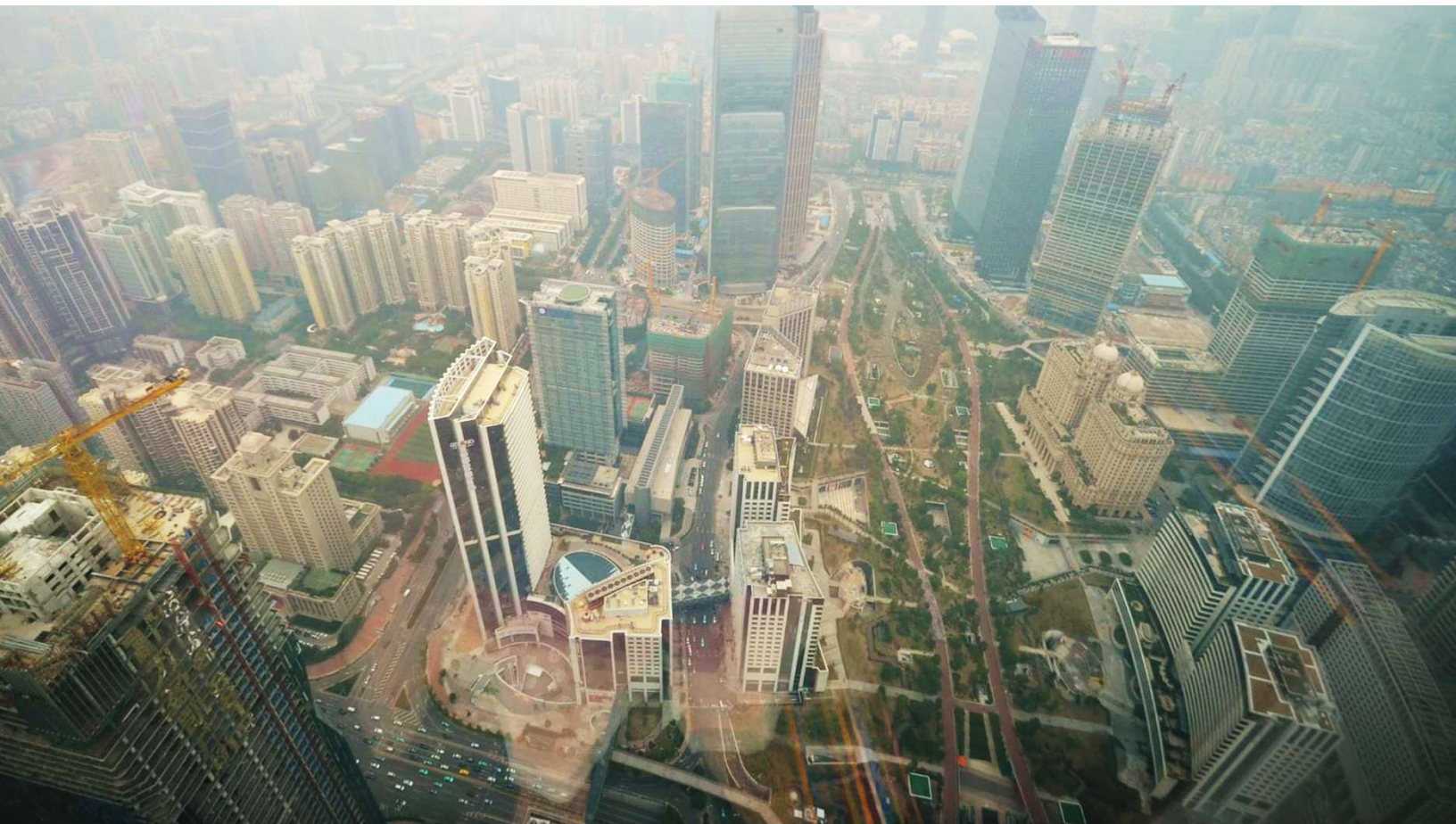




An overview of the new GZ  
Axis at Tianhe, basically  
completed, as seen in 2013









Some representing project cases  
for commercial development

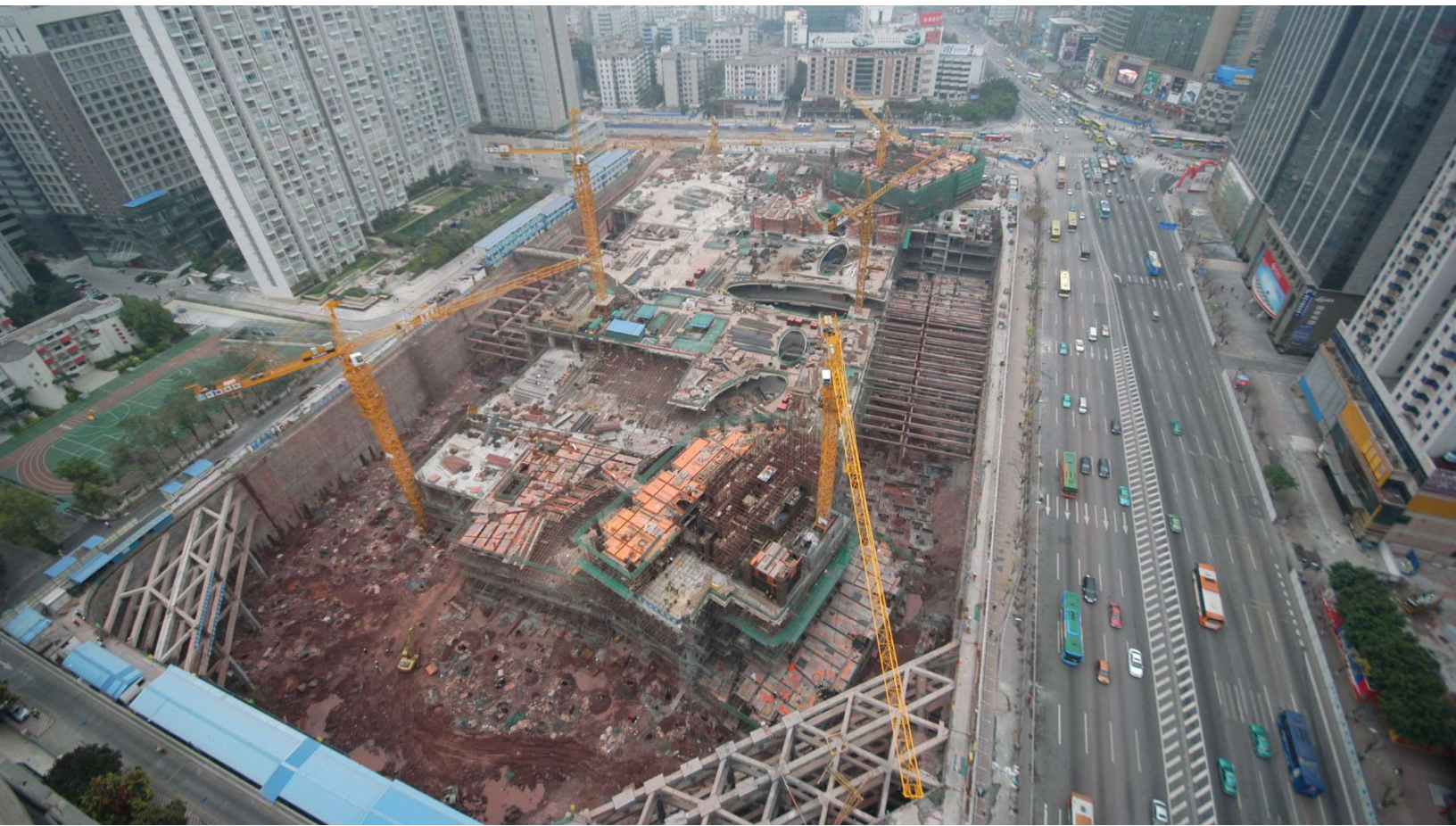






The Taikoo Hui Project  
in Tianhe District























Temporary roadway as access to the basement interior ← - - →



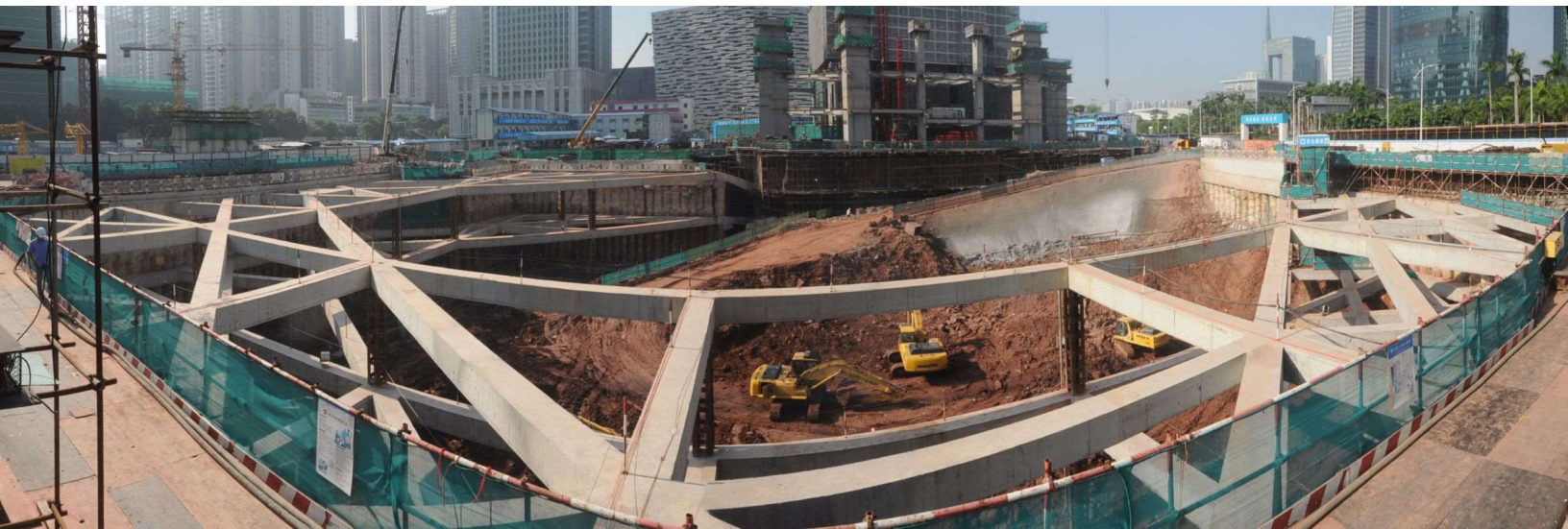




The GZ Chow Tai Fook Tower









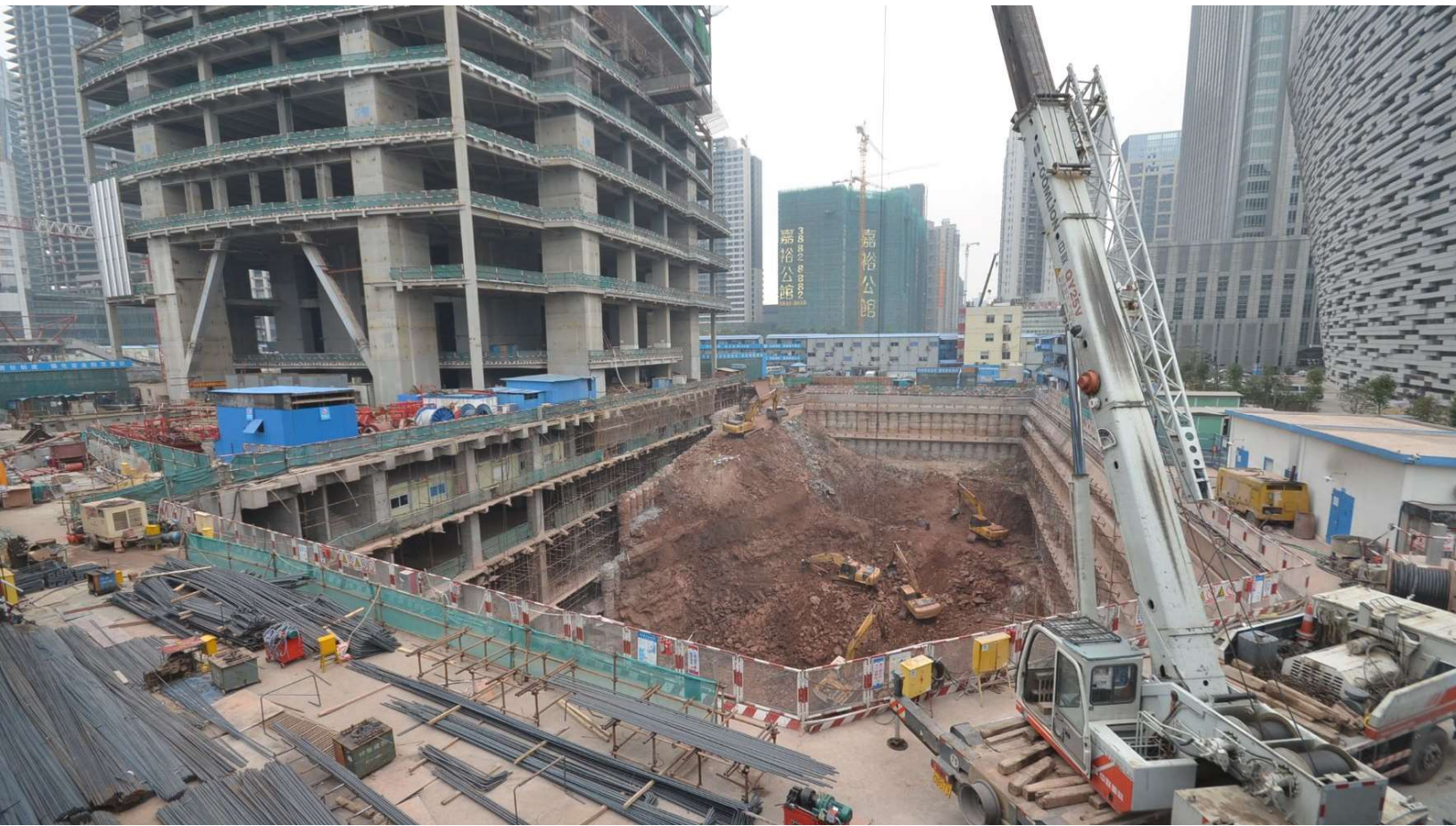
























Other examples in Tianhe District





Redevelopment of the Liede Village









Redevelopment of the Liede Village





Office tower at GZ Financial City









































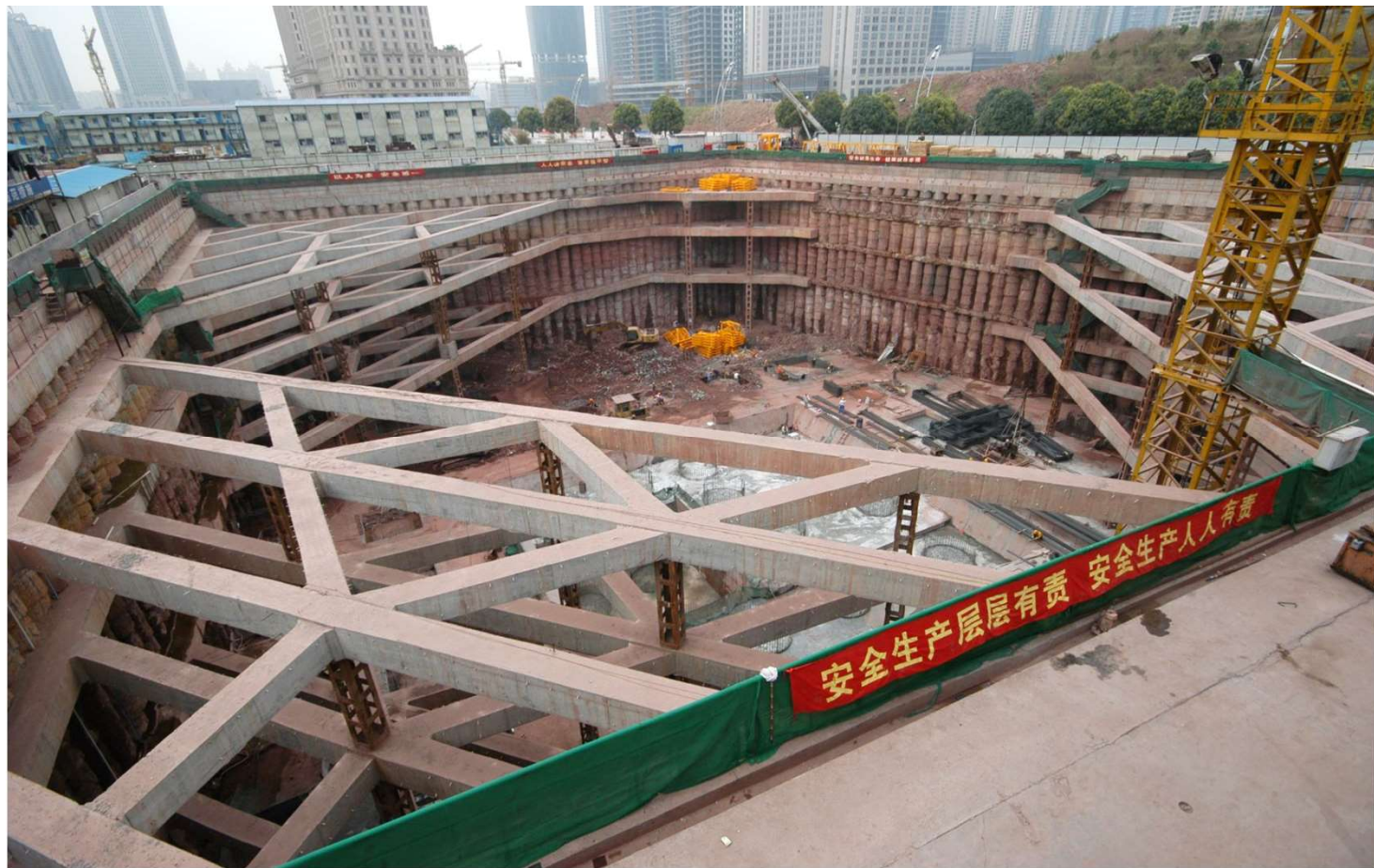












安全生产层层有责 安全生产人人有责















The GZ IFC





The GZ IGC (天匯廣場)



GZ Financial City







The use of hand-dug caisson

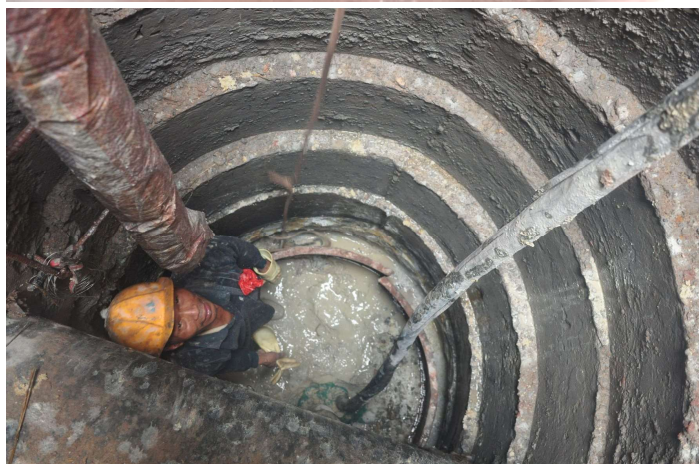












End of Presentation