

Some representing cases  
- projects other than usual demolition  
(mainly A&A projects)

Ir Raymond Wong Wai-man  
Independent Researcher  
retired academic from City University  
November 2023

Old Mental Hospital in Sai Ying Pun converted  
into the Sai Ying Pun Community Complex

















Revitalization of the previous Sai Ying Ping  
Police Station into a rehabilitation centre  
as part of the West Island Line  
compensation projects



Revitalization of the previous Sai Ying Ping Police Station into a rehabilitation centre as part of the West Island Line compensation projects



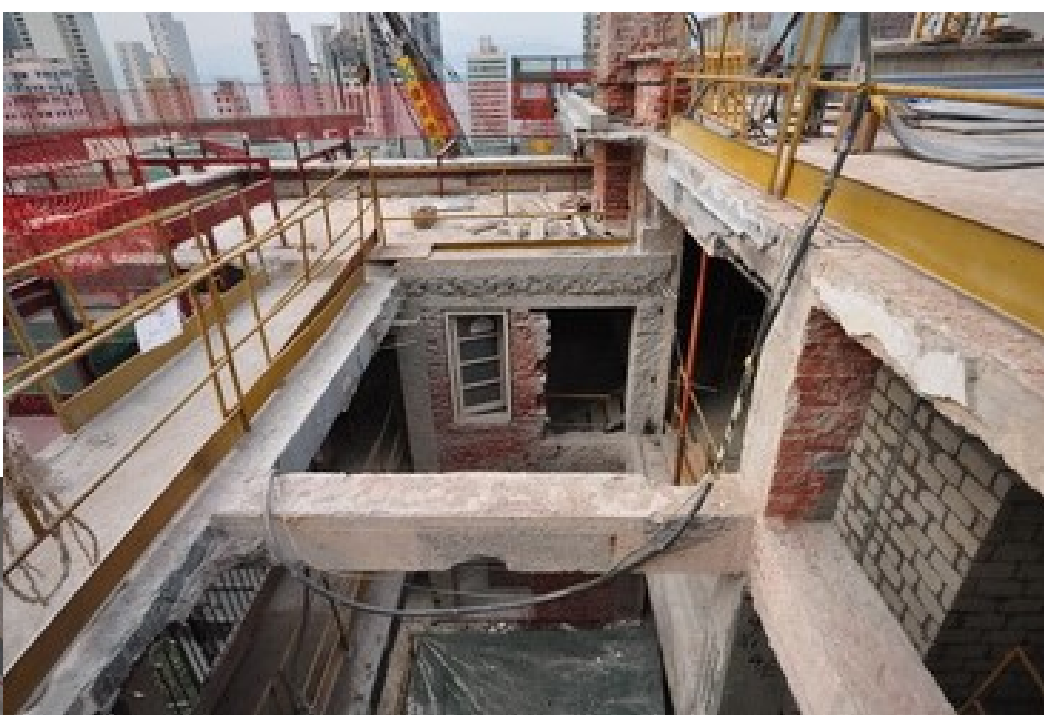
































# Preserving and revitalizing the Central Police Station Complex











Preserving and revitalizing the Pre-war building as  
part of the Lee Tung Street redevelopment project









Pre-war building to be preserved and revitalized for the Lee Tung Street redevelopment project























































Some cases in mainland China





























翻修中的樓宇內部，及新舊結構的融合安排，成為擴建項目的一個組成





翻修中的樓宇內部，包括結構  
加固及改建 (underpinning works)

















Further example

The conversion of a warehouse into a deluxe  
restaurant and club house







































Demolition of the previous Hong Kong  
International Airport Terminal Building 2













reclaimed land for the 3rd runway





Hong Kong  
International  
Airport  
香港國際機場

Chek Lap Kok  
赤鱓角

Hong Kong  
Boundary  
Crossing  
Facilities  
港珠澳大橋  
香港口岸  
人工島









The rear side of Terminal Building 2







3:2







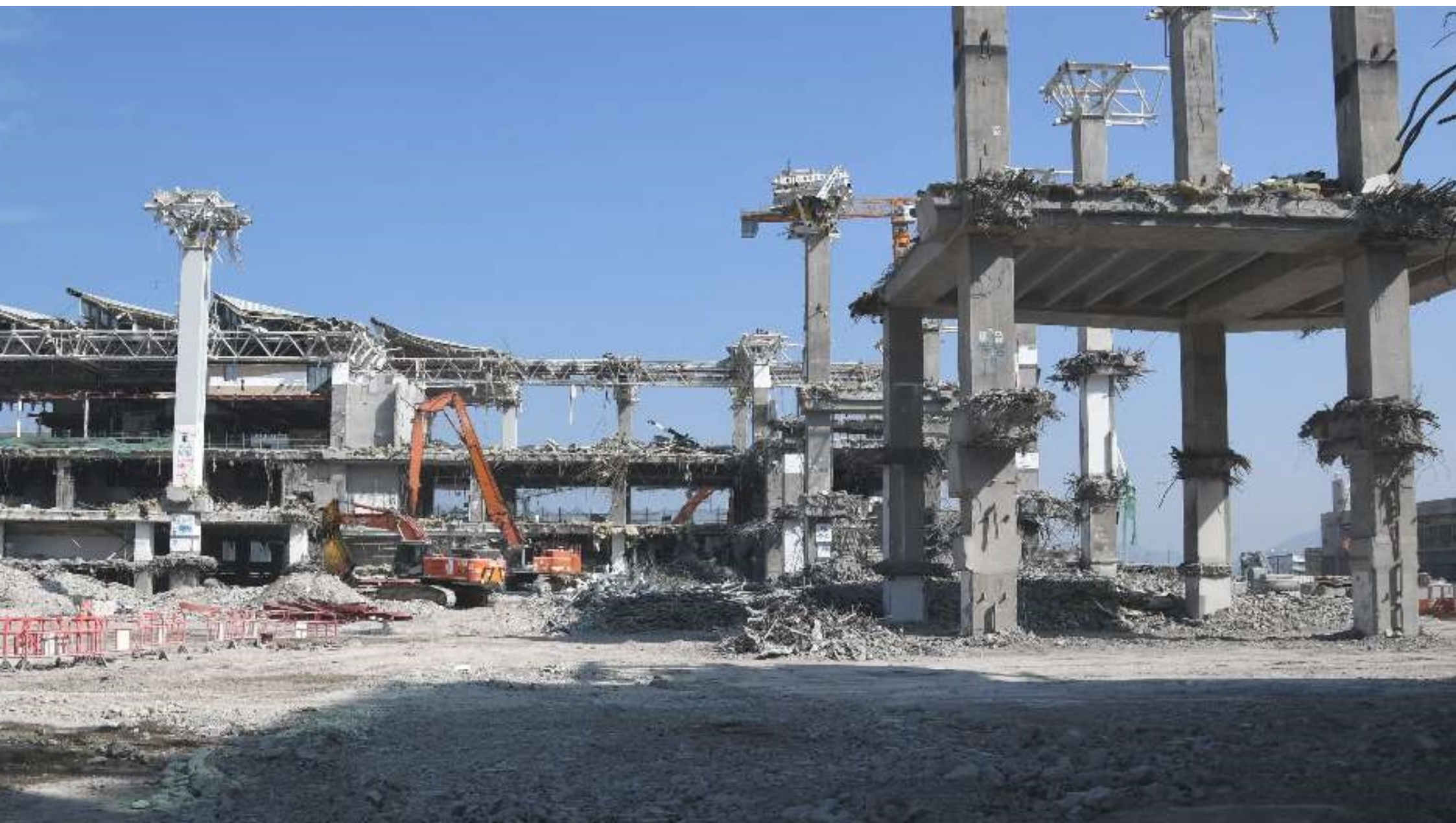
















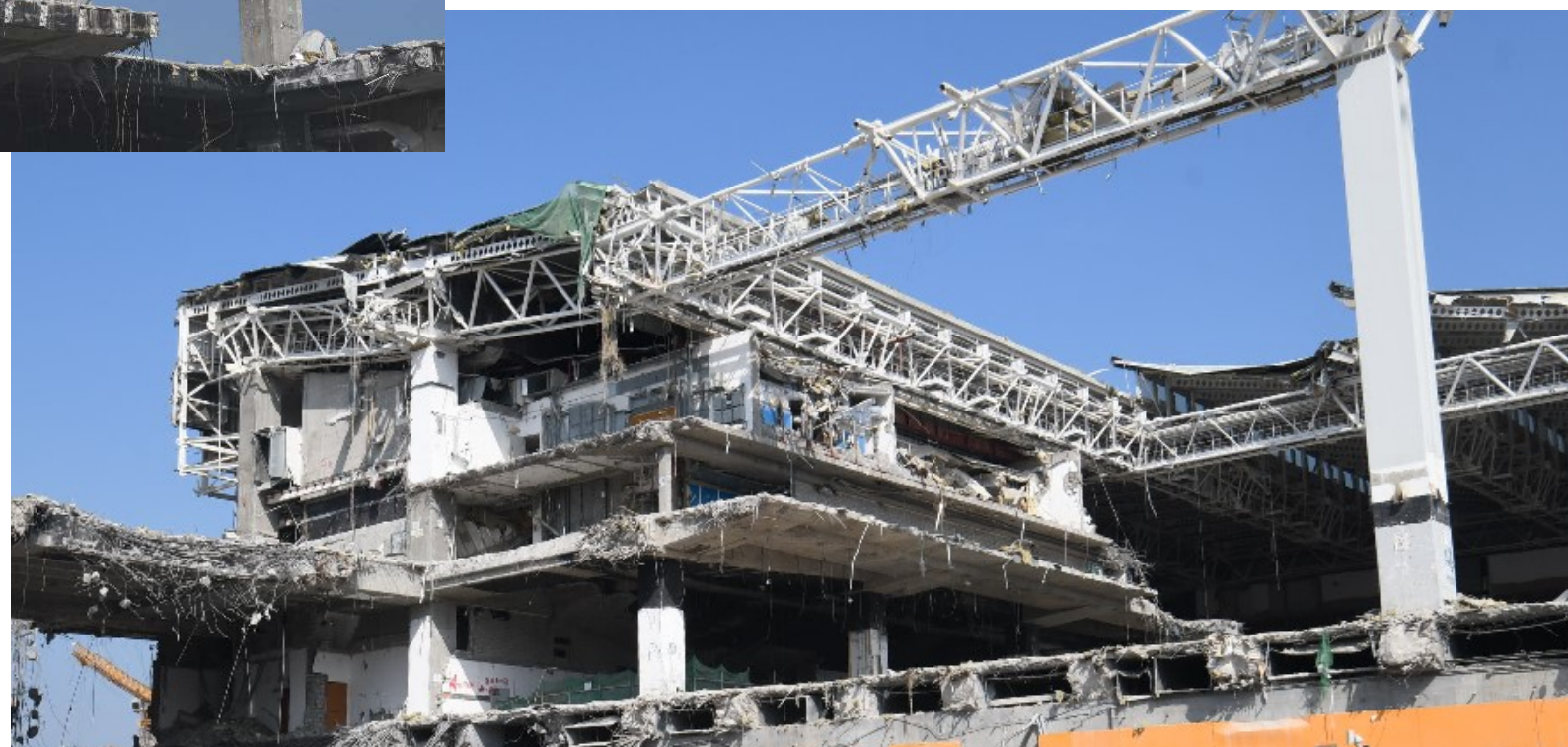
















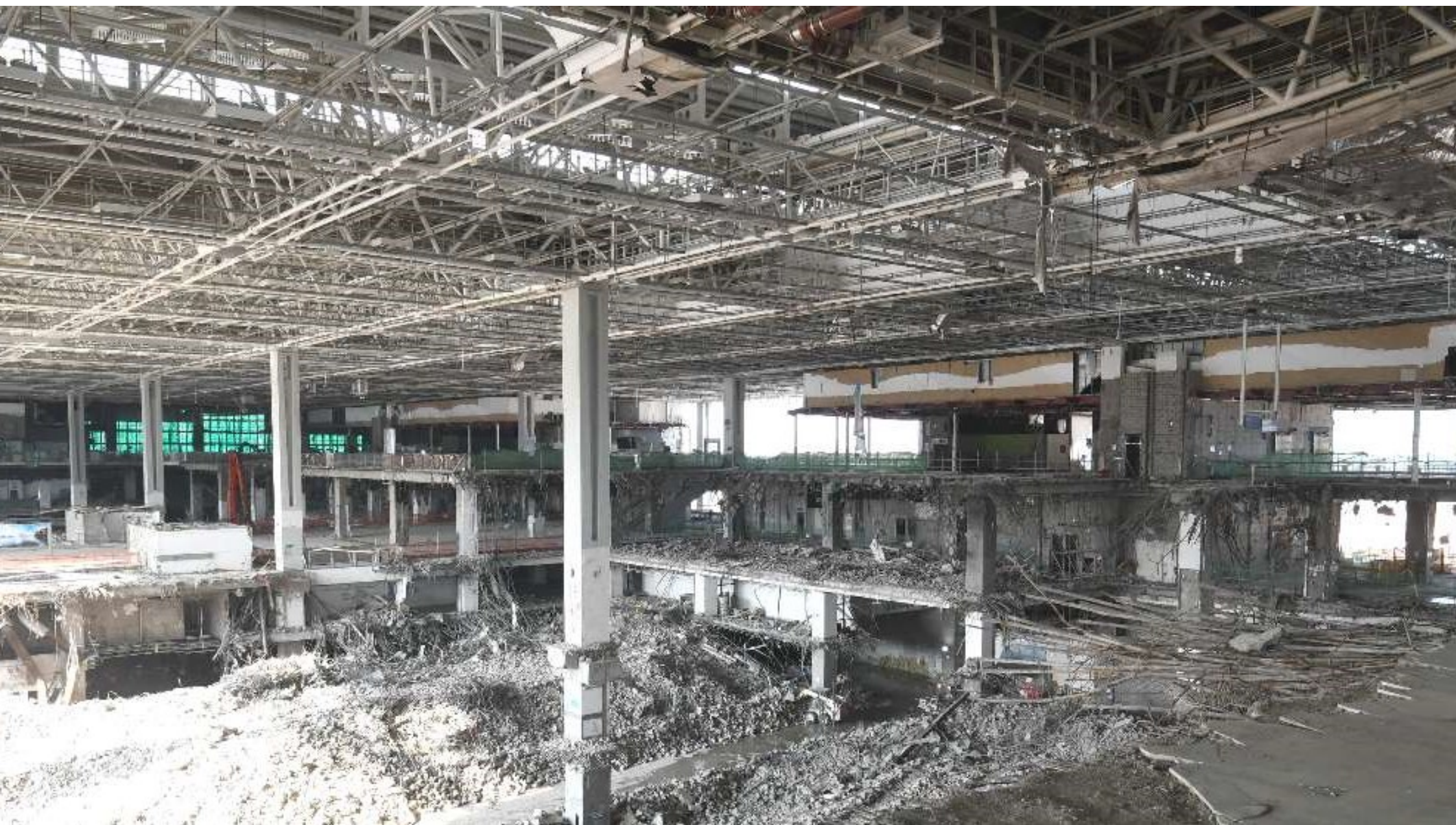






















Demolition of the previous Yaumatei  
multi-storey carpark









2018



2019







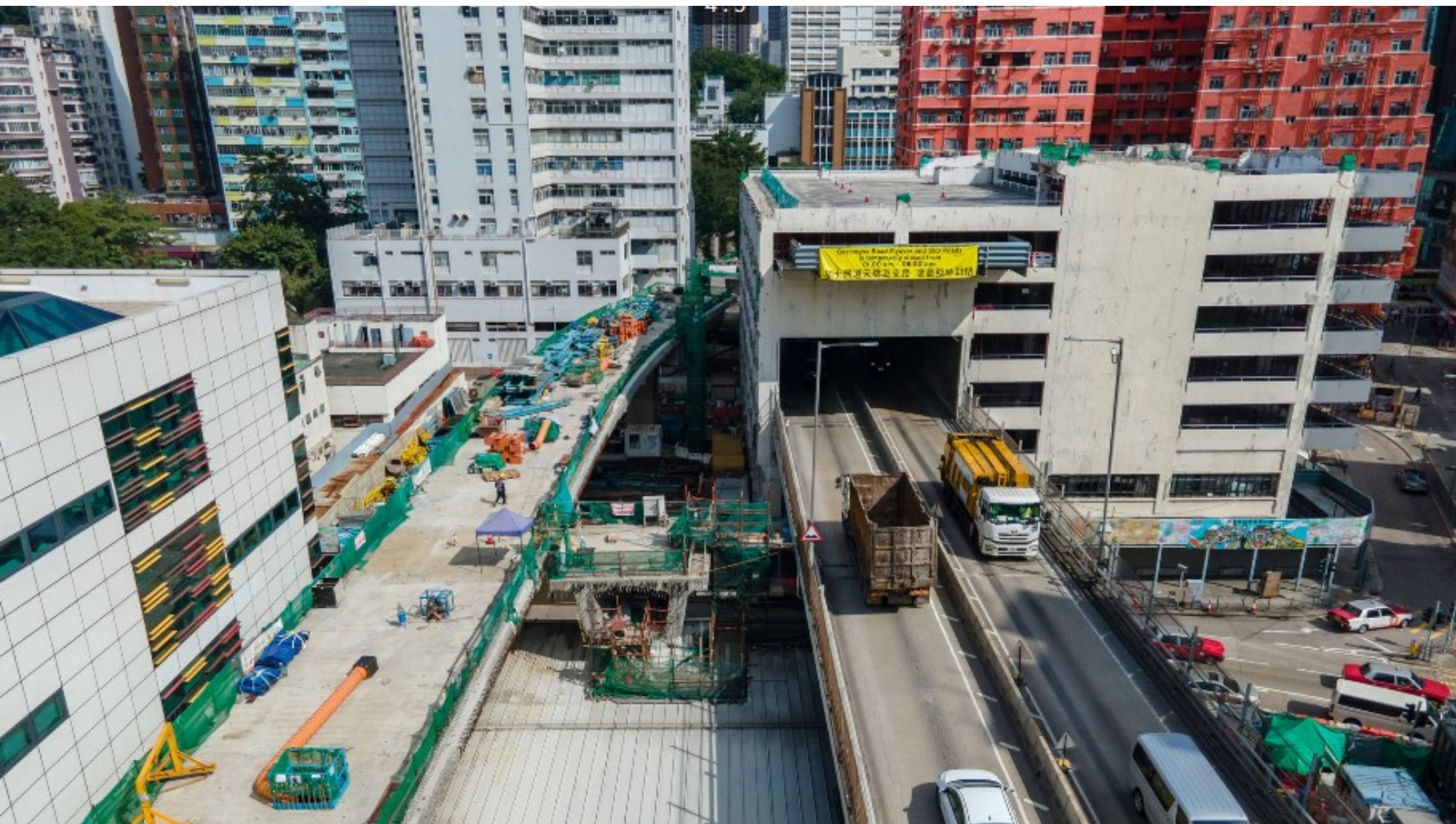






































August 2021













Oct 2022













