

Highlight about the new TKO Bridge & Lam Tin Tunnel Projects

Presentation prepared by Raymond Wong
For a CPD talk hosted by
HKICW

29 January 2024

The overall projects comprise of 5 major components, that is

1. Lam Tin Interchange,
2. Tseung Kwan O–Lam Tin Tunnel,
3. TKO Interchange,
4. Connecting roadway to TKO new town
and
5. TKO Cross Bay link.

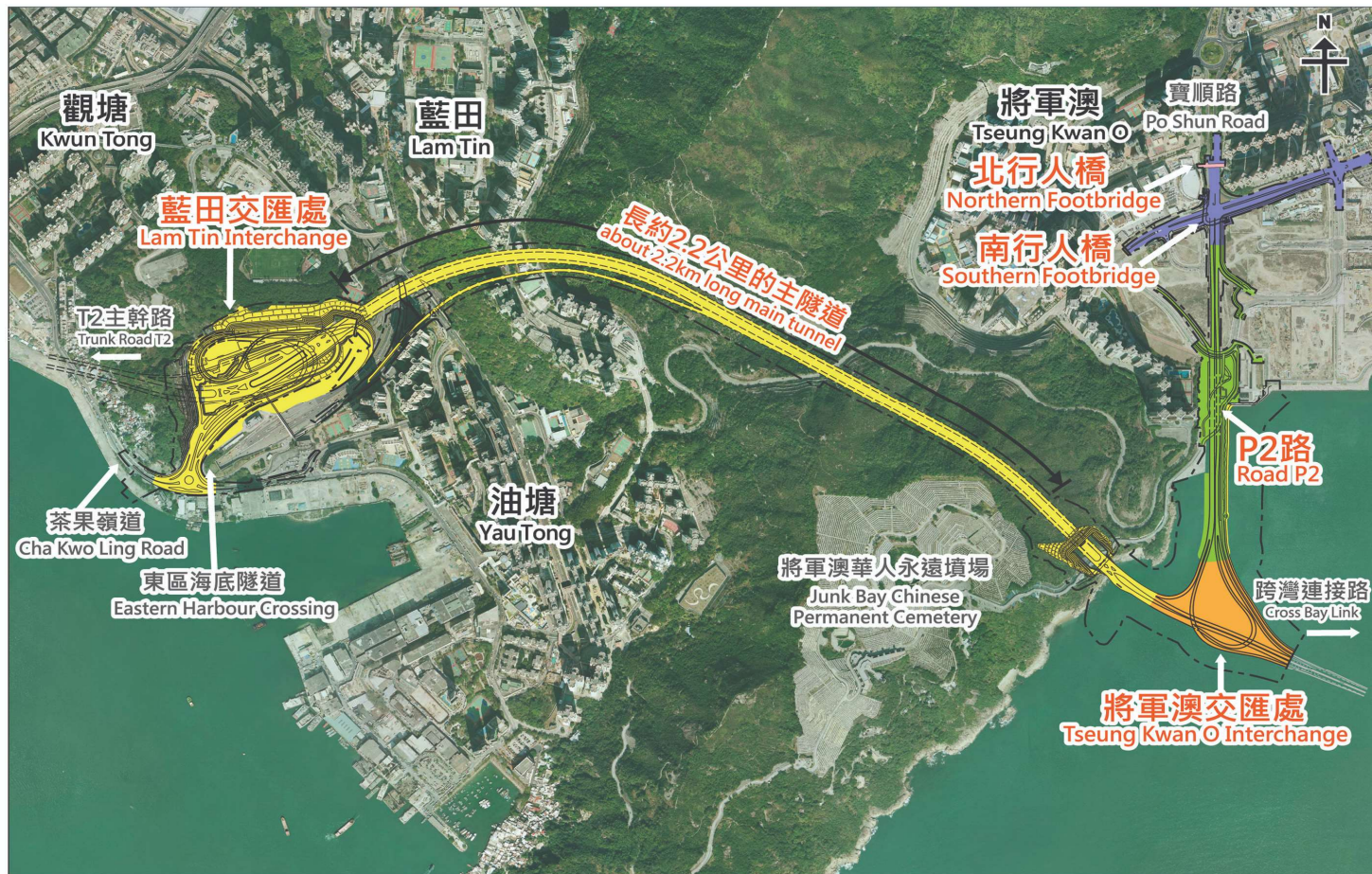
These projects involved a great variety of civil work operations, they included:

- huge amount of rock/slope cuttings,
- tunnelling works,
- bridge and elevated carriageway in various construction forms,
- large-size prefabricated components and heavy lifting,
- large number of marine works and reclamation, and
- complicated traffic diversion arrangement.

Works on the Yau Tong/Lam Tin side – Lam Tin Interchange

<https://www.youtube.com/watch?v=yUkOAlMq0Ig>

<https://www.youtube.com/watch?v=zBHkqBxtnpl>



圖例:

Legends:

合約編號:

Contract No.

NE/2015/01

合約編號:

Contract No.

NE/2015/02

合約編號:

Contract No.

NE/2015/03

合約編號:

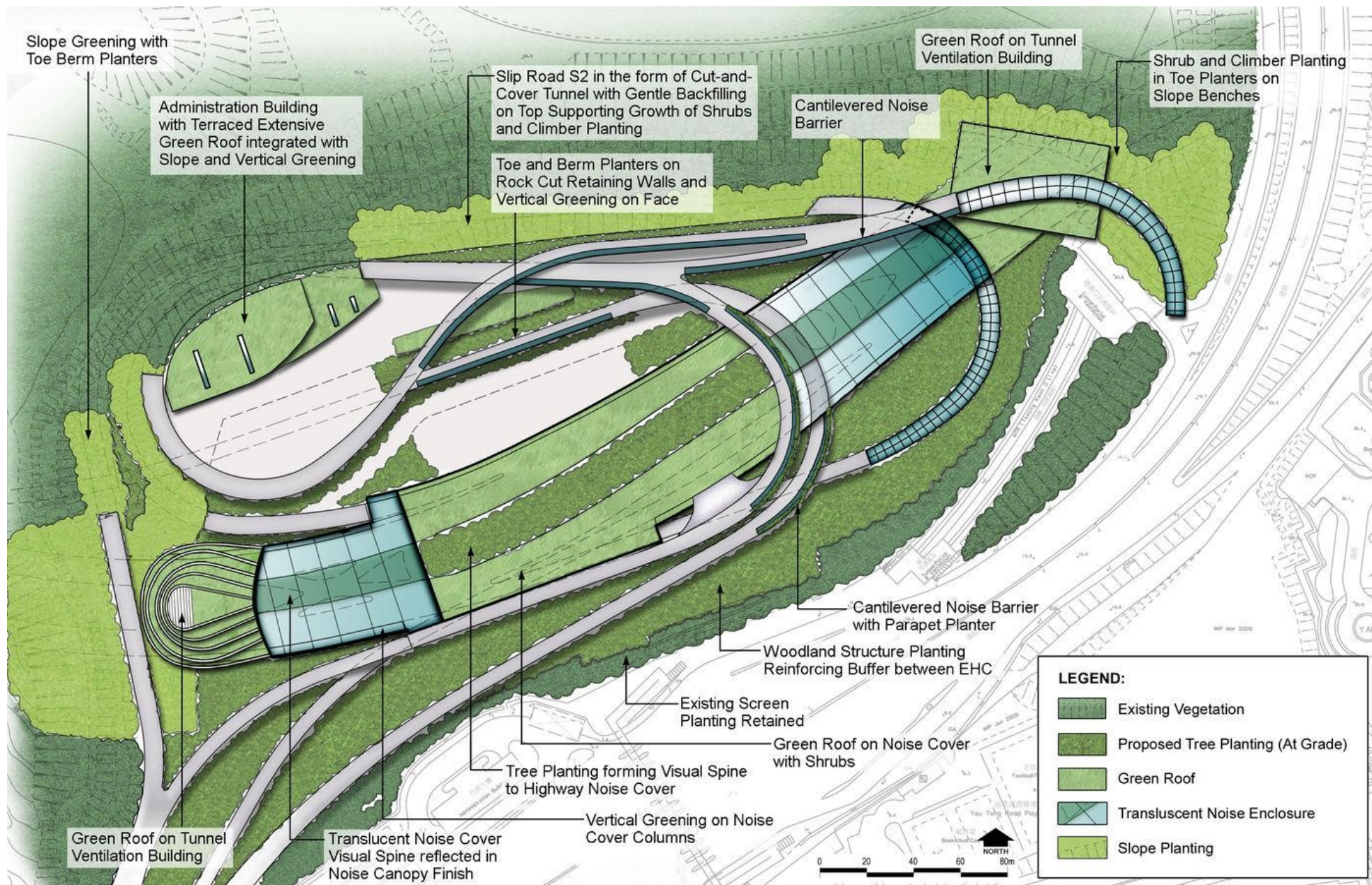
Contract No.

NE/2017/01

合約編號:

Contract No.

NE/2017/02





The site before commencement of the project (2005)



The site before commencement of the project (2008)

Site for the Kai Tak Cruise Terminal





The site for the Lam Tin Interchange as seen in early 2017 at the beginning of site formation



Late 2017



The site for the Lam Tin Interchange as seen in January 2017 at the beginning of site formation



The site as seen in Late 2017





site formation as seen
in June 2019



site formation as seen
in January 2020





site formation as seen
in April 2020



Admin Building for
the TKO Tunnel



site formation and construction of part of the carriageway as seen in March 2021





Close-up view to see the scale and
complication of the site formation
(main slope cutting in rock and to form the
geometry to accommodate the facilities)

Close-up view to see the scale and complication
of the site formation (main slope cutting in rock)

January 2017



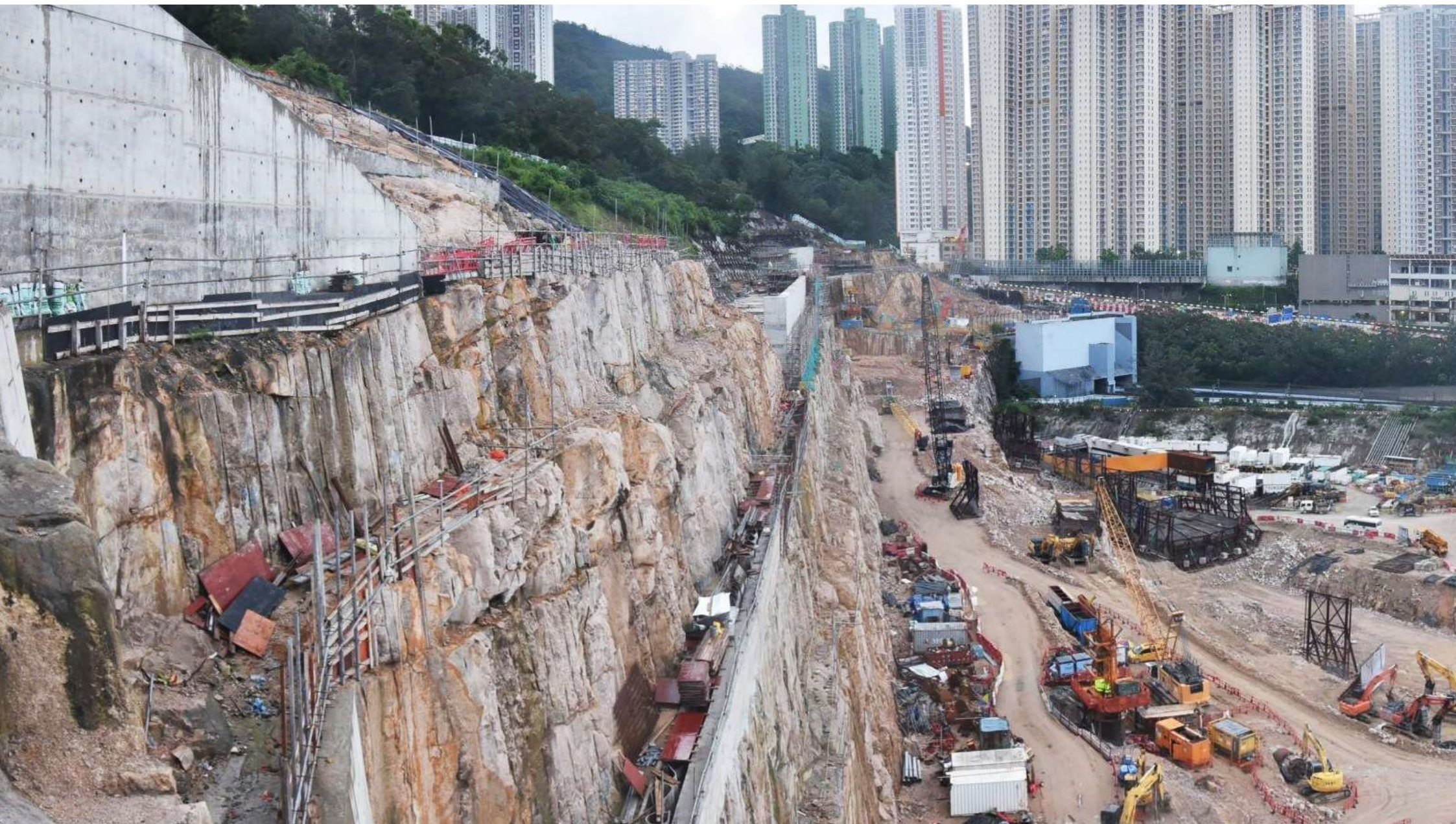
Close-up view to see the scale and complication of the site formation (main slope cutting in rock)

Forming of temporary accessway
for slope/rock cutting operations



Seeing the scale of slope cutting and finally formed almost a vertical cut (height of cut approx. 90m)





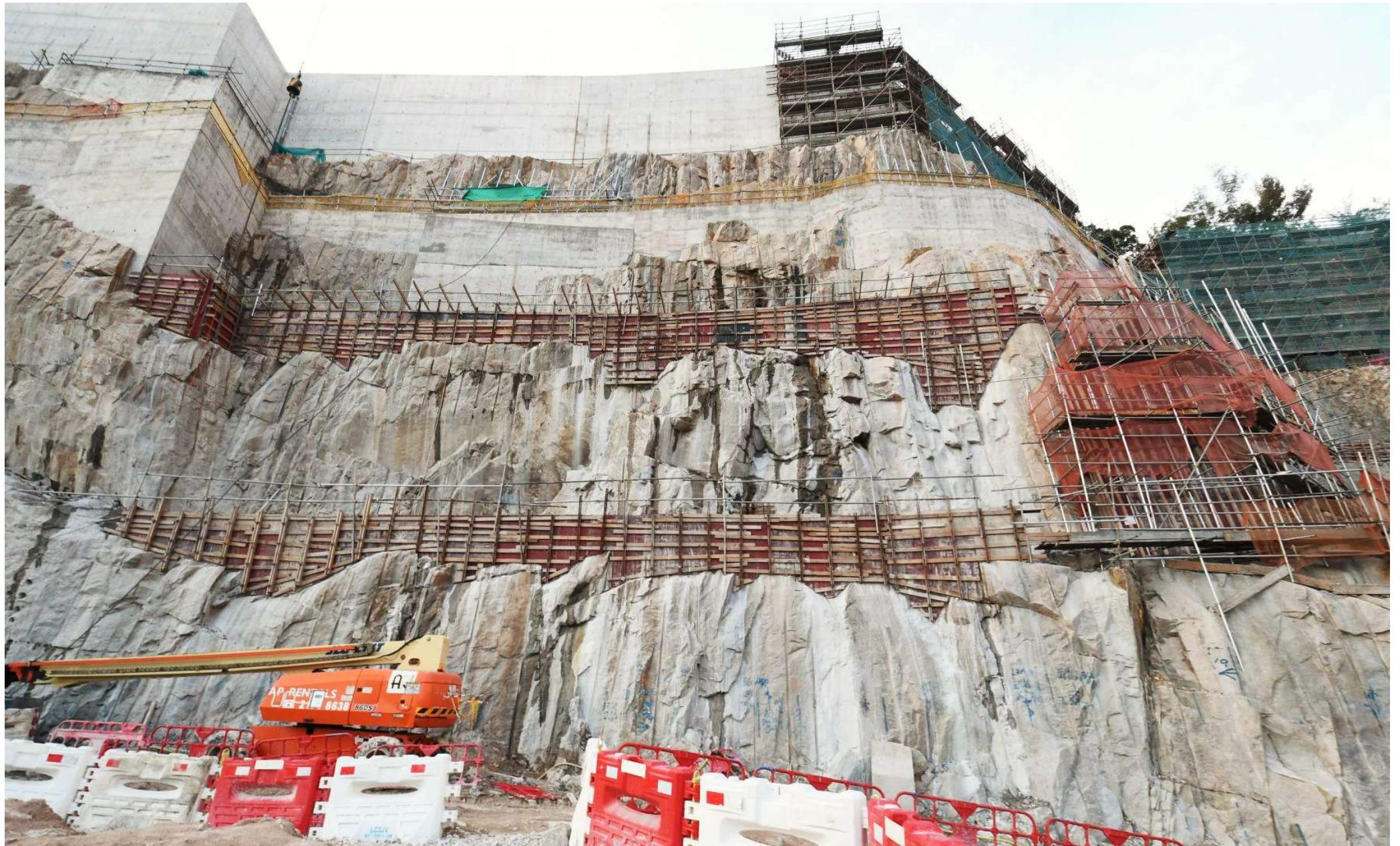


Slope stabilization
continued at the
upper slope

Mid 2021



Cha Kwo Ling Village





cutting in rock to form the shape & geometry
to accommodate the facilities/roadway

Cut within solid rock to form a passageway
for the passing of a slip-road





Typical Complicated site geometry formed by rock cutting

Typical Complicated site
geometry formed by rock cutting





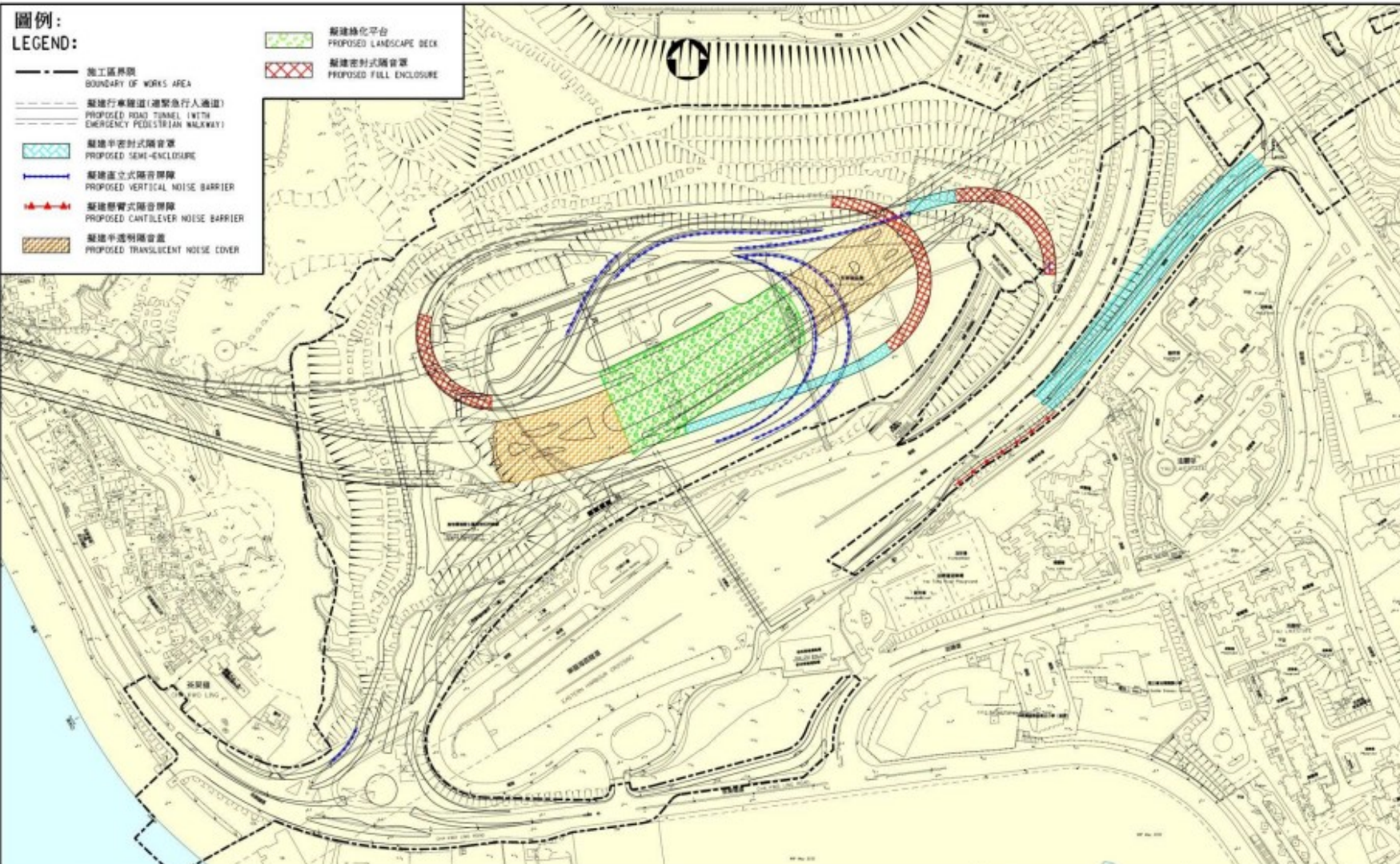
Stabilizing large area
of vertical cut/slope



Temporary access roadway and pier
for the disposal of spoil materials



Construction of the slip road and carriageway
system within the Lam Tin Interchange



圖則名稱 drawing title

工務計劃第823TH號 - 將軍澳-藍田隧道 - 藍田交匯處的噪音緩解措施
 PWP ITEM NO. 823TH - TSEUNG KWAN O - LAM TIN TUNNEL
 - NOISE MITIGATION MEASURES AT LAM TIN INTERCHANGE

項目編號 item no.

823TH

圖則編號 drawing no.

CDES AKZ0029



土木工程拓展署
 CIVIL ENGINEERING
 AND DEVELOPMENT
 DEPARTMENT

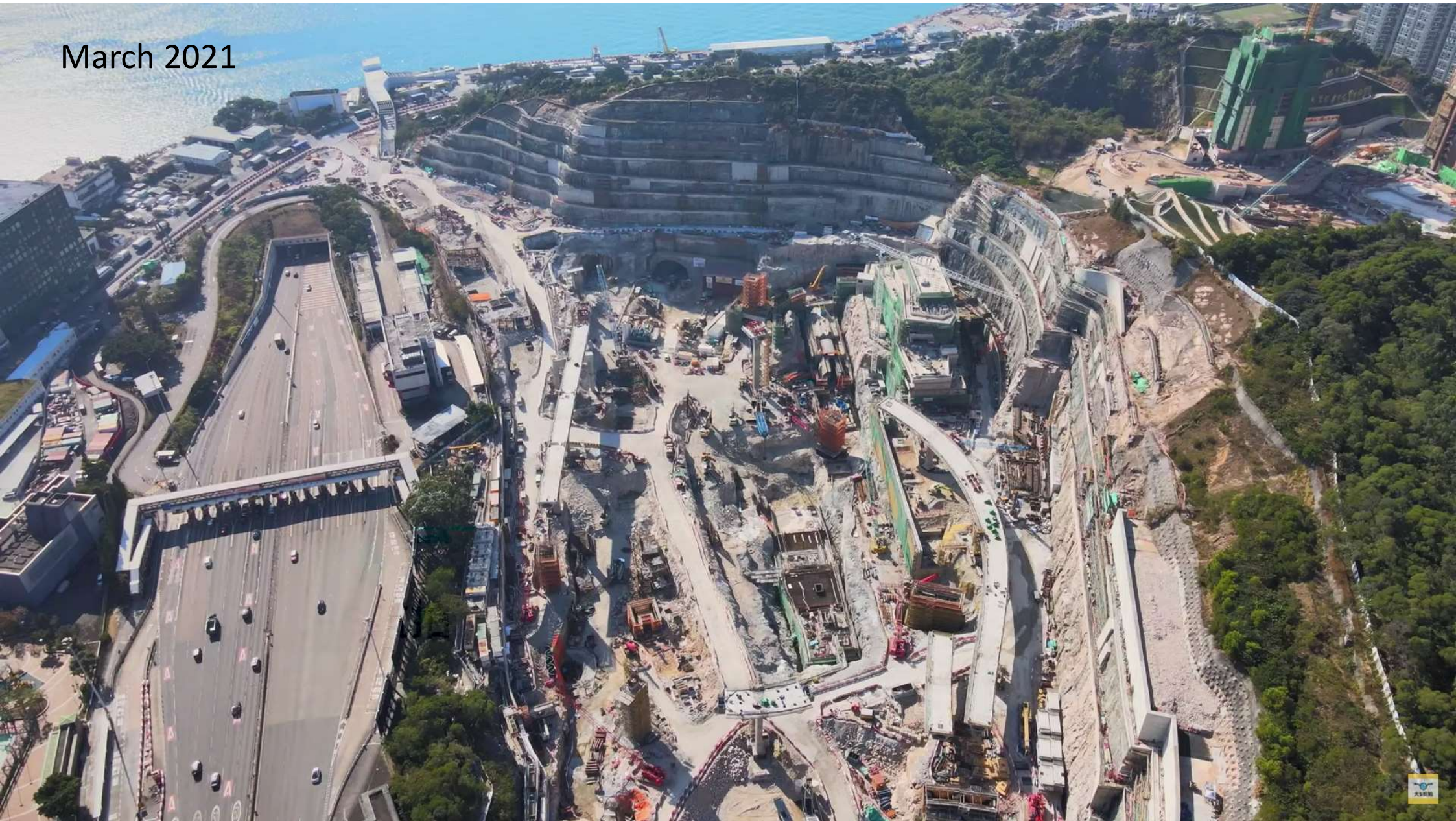






December 2020

March 2021





July 2021

January 2022

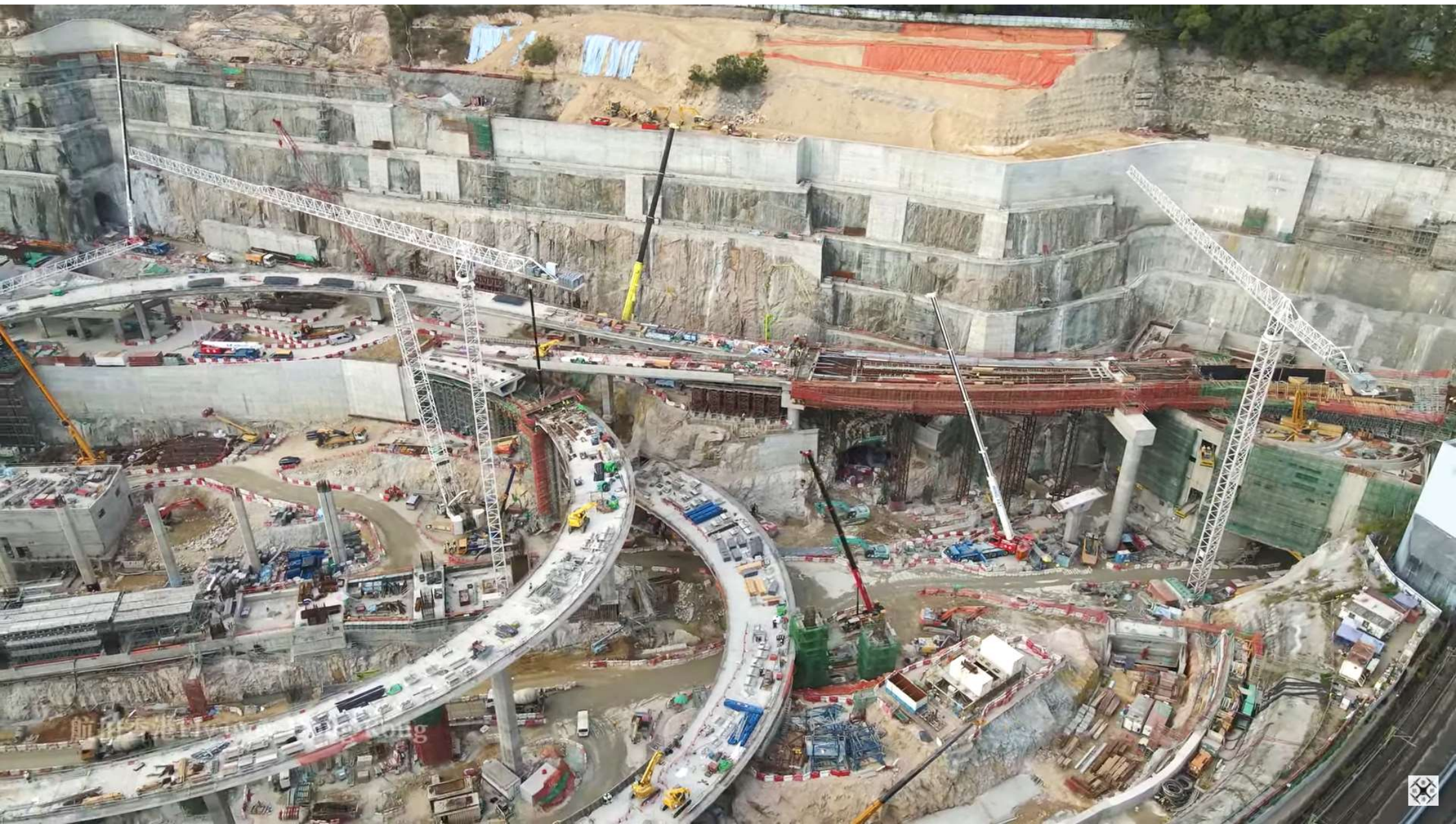


航拍香港Fly over Hong Kong



航拍香港 Fly over Hong Kong







February 2022

February 2022

